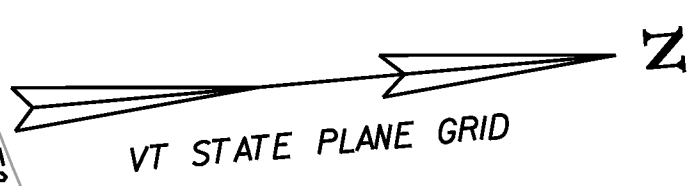
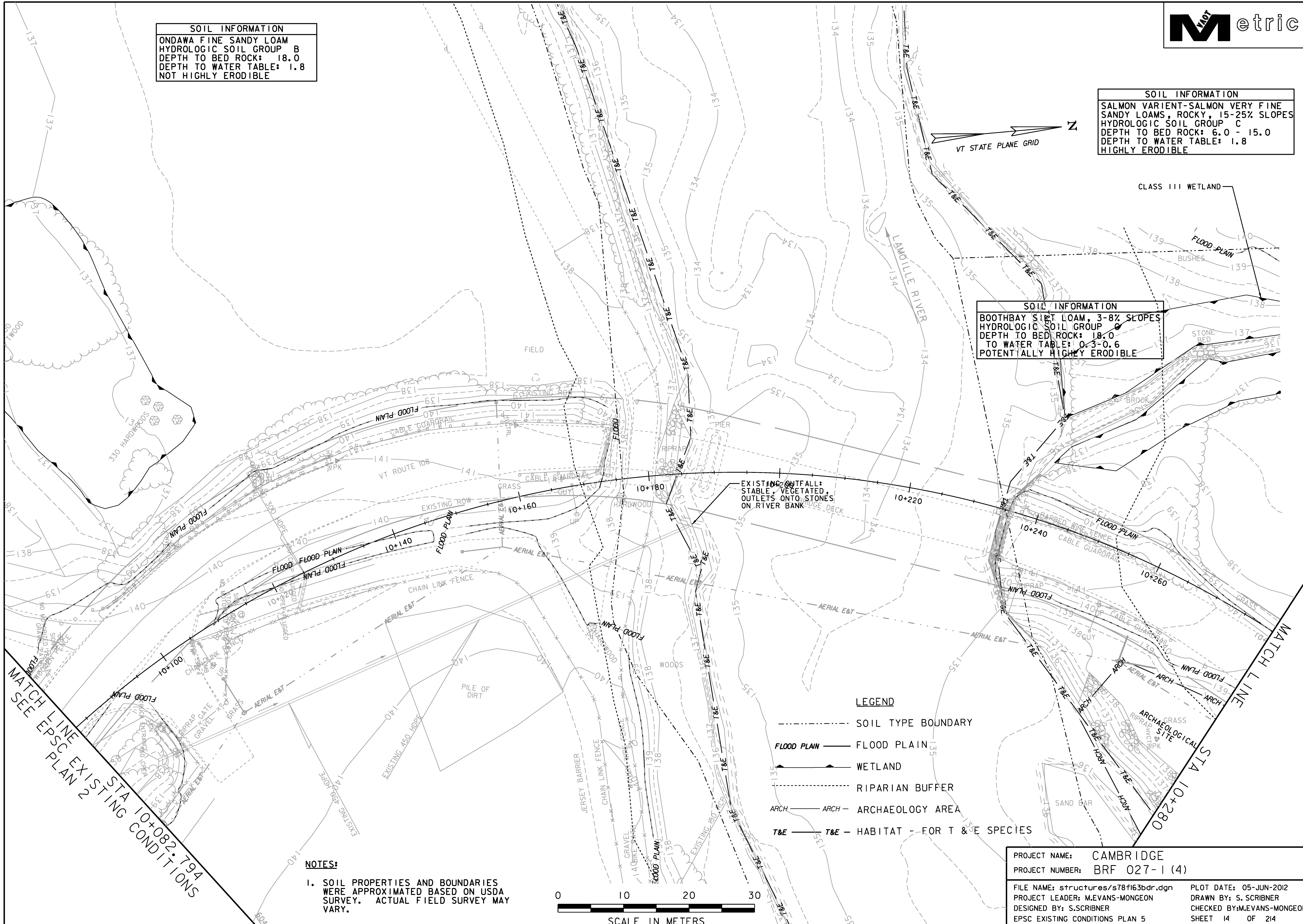


**SOIL INFORMATION**  
 ONDWA FINE SANDY LOAM  
 HYDROLOGIC SOIL GROUP B  
 DEPTH TO BED ROCK: 18.0  
 DEPTH TO WATER TABLE: 1.8  
 NOT HIGHLY ERODIBLE

**SOIL INFORMATION**  
 SALMON VARIANT-SALMON VERY FINE SANDY LOAMS, ROCKY, 15-25% SLOPES  
 HYDROLOGIC SOIL GROUP C  
 DEPTH TO BED ROCK: 6.0 - 15.0  
 DEPTH TO WATER TABLE: 1.8  
 HIGHLY ERODIBLE

**SOIL INFORMATION**  
 BOOTHBAY SILT LOAM, 3-8% SLOPES  
 HYDROLOGIC SOIL GROUP C  
 DEPTH TO BED ROCK: 18.0  
 DEPTH TO WATER TABLE: 0.3-0.6  
 POTENTIALLY HIGHLY ERODIBLE



MATCH LINE SEE EPSC PLAN 2  
 STA 10+082.794  
 EXISTING CONDITIONS

MATCH LINE  
 STA 10+280

- LEGEND**
- SOIL TYPE BOUNDARY
  - FLOOD PLAIN — FLOOD PLAIN
  - WETLAND
  - RIPARIAN BUFFER
  - ARCH — ARCH — ARCHAEOLOGY AREA
  - T&E — T&E — HABITAT - FOR T & E SPECIES

**NOTES:**  
 1. SOIL PROPERTIES AND BOUNDARIES WERE APPROXIMATED BASED ON USDA SURVEY. ACTUAL FIELD SURVEY MAY VARY.



PROJECT NAME: CAMBRIDGE	PLOT DATE: 05-JUN-2012
PROJECT NUMBER: BRF 027-1 (4)	DRAWN BY: S. SCRIBNER
FILE NAME: structures/s78f63bdr.dgn	CHECKED BY: M.EVANS-MONGEON
PROJECT LEADER: M.EVANS-MONGEON	SHEET 14 OF 214
DESIGNED BY: S.SCRIBNER	
EPSC EXISTING CONDITIONS PLAN 5	