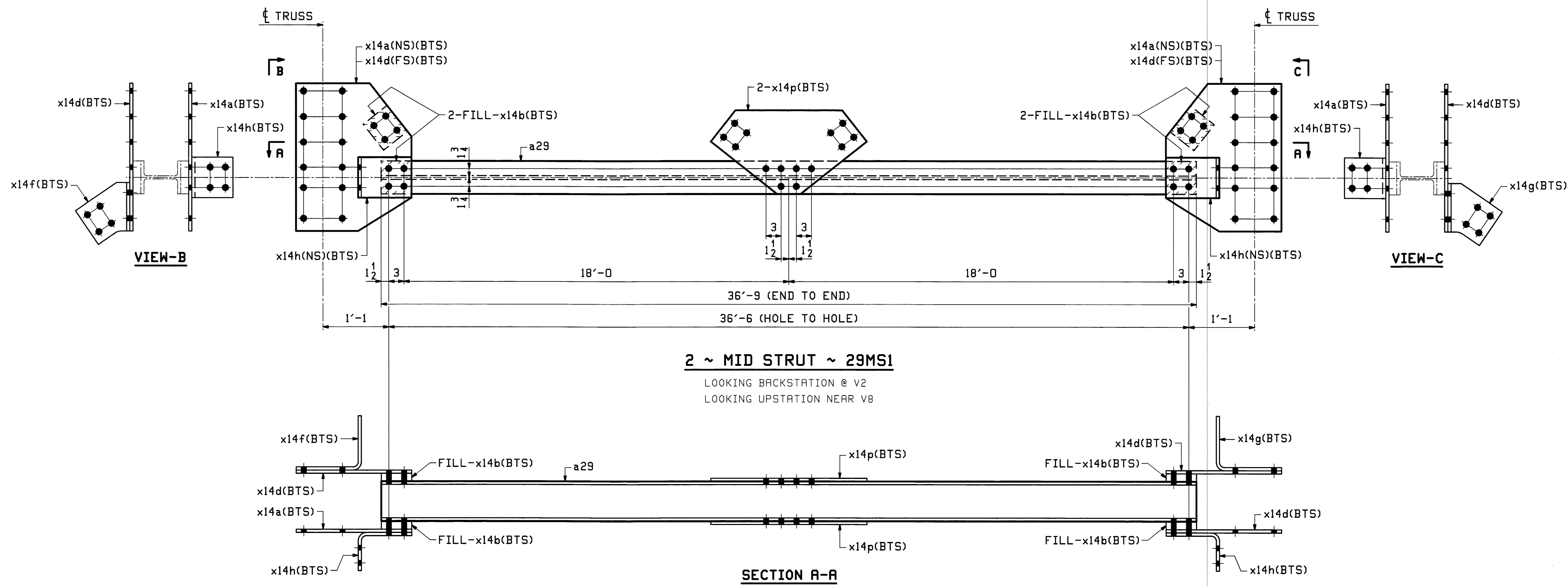


ABM INFO		SHIP		BILL OF MATERIAL			JOB NO.	DRAWING NO.	REV.
							498	29	
PAGE	LINE	MARK	QTY	MARK	MATERIAL	LENGTH FT INCHES	REMARKS	WT	PROCUREMENT NOTES
		29MS1	2		MID STRUT			1656	
7	Q		2	a29	W 8x24	36 9			
4	S		4	x14a	PL $\frac{1}{2}$ x 22 $\frac{13}{16}$	2 5			
4	W		16	x14b	PL $\frac{1}{4}$ x 6	0 6 $\frac{1}{2}$	FILL		
4	S		4	x14d	PL $\frac{1}{2}$ x 22 $\frac{13}{16}$	2 5			
4	U		2	x14f	PL $\frac{1}{2}$ x 12 $\frac{1}{8}$	1 10 $\frac{7}{16}$	BENT		
4	U		2	x14g	PL $\frac{1}{2}$ x 12 $\frac{1}{8}$	1 10 $\frac{7}{16}$	BENT		
4	T		4	x14h	PL $\frac{1}{2}$ x 8	1 5	BENT		
11	N		4	x14p	PL $\frac{1}{2}$ x 16 $\frac{1}{2}$	2 6 $\frac{7}{8}$			



Vermont Agency of Transportation
RECEIVED
 CK'D BY M.C.L. OK'D BY S.S.S.
 January 10 2012
 RESUBMIT APPROVED ✓
 BY J. LACROIX DATE 01-12-2012

NOTES:
 1. FOR GENERAL NOTES SEE SHEET GNI.

REV.	DATE	REMARKS	DWN	CHK	APVL	SHOP
0						
MATERIAL:		SURFACE PREP. & PAINT:		HOLES:		SHOP BOLTS:
M270-50 (UN)		HOT-DIP GALV.		15/16 (UN)		NONE
DESCRIPTION: MID SWAY FRAME STRUT 29MS1						
CASCO BAY STEEL STRUCTURES, INC. 1 WALLACE AVE. PHONE (207) 780-6722 SOUTH PORTLAND, ME 04106 FAX. (207) 780-6726						
STRUCTURE: VT RTE 107 OVER WHITE RIVER				DRAWN:	DATE:	
				EEO	10/27	
				CHKD:	DATE:	
				PCP	10/28	
LOCATION: BETHEL, VT.			JOB NO.		DWG NO.	
PROJ NO. BRF 022-1(14)			498		29	
CUSTOMER: BECK & BELLUCCI					REV. <input type="checkbox"/>	

EEO This Nov 17, 2011 08:29:04 AM C:\msd\jbs\2012\29 1 Rev D