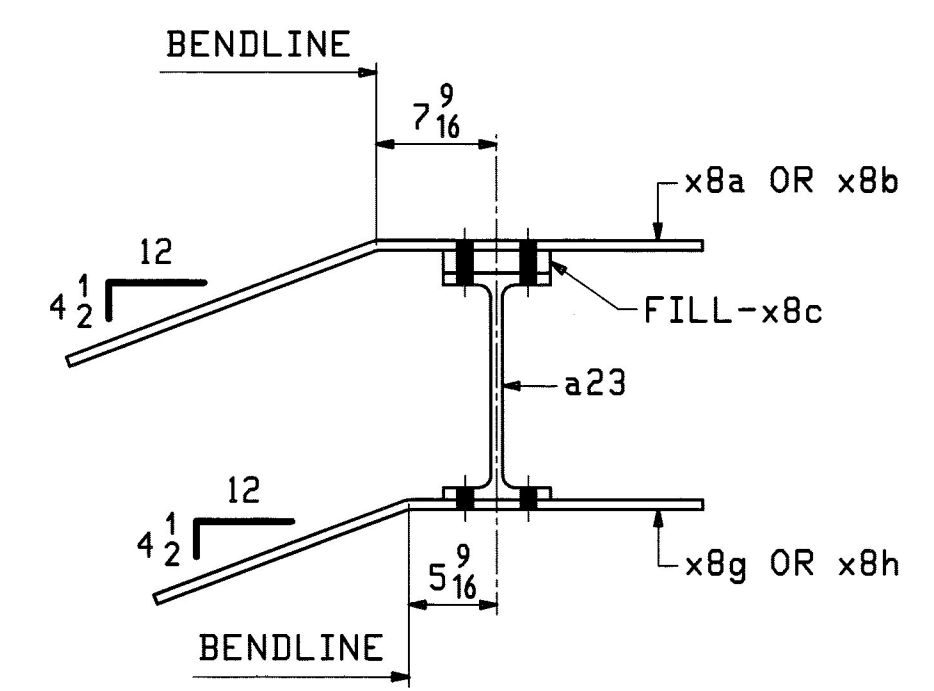


ABM INFO		SHIP		BILL OF MATERIAL				JOB NO.	DRAWING NO.	REV.
								498	23	
PAGE	LINE	MARK	QTY	MARK	MATERIAL	LENGTH	REMARKS	WT	PROCUREMENT NOTES	
						FT INCHES				
		23TS1	2		TOP STRUT			2895		
6	W		2	a23	W 14x38	36 4				
9	H		8	x4d	L 4x4x 1/2	1 4 1/2	M270-36			
9	H		8	x4g	L 4x4x 1/2	1 5	M270-36			
9	B		2	x8a	PL 1/2x3 1/16	3 5 1/16	BENT			
9	B		2	x8b	PL 1/2x3 1/16	3 5 1/16	BENT			
8	V		4	x8c	PL 1 1/4x6 3/4	1 0	FILL			
9	F		4	x8d	PL 1 1/8x5 1/4	0 8	FILL			
8	U		16	x8f	PL 1 1/8x5	0 7	FILL			
9	C		2	x8g	PL 1 1/2x15 1/16	2 11 9/16	BENT			
9	C		2	x8h	PL 1 1/2x15 1/16	2 11 9/16	BENT			
8	R		8	x8k	PL 1/2x16	3 4				
8	X		4	x8m	PL 1 1/4x6 3/4	3 4	FILL			
21	D		56		7/8 HSB	0 2 1/2	MECH. GALV. 3325-1			
21	X		56		7/8 HSW		MECH. GALV. F436			
21	Y		56		LOAD IND. WASH FOR 7/8 HSB		MECH. GALV. F436			



Vermont Agency of Transportation
RECEIVED
 CK'D BY M.C.L. OK'D BY S.S.S.
 January 10 2012
 RESUBMIT APPROVED ✓
 BY J. LACROIX DATE 01-12-2012

NOTES:
 1. FOR GENERAL NOTES SEE SHEET GN1.

REV.	DATE	REMARKS	DWN	CHK	APVL	SHOP
0						
MATERIAL:		SURFACE PREP. & PAINT:		HOLES:		SHOP BOLTS:
M270-50 (UN)		HOT-DIP GALV.		15 1/16 (UN)		7 8 (UN)
DESCRIPTION: TOP STRUT 23TS1						
CASCO BAY STEEL STRUCTURES, INC. 1 WALLACE AVE. PHONE (207) 780-6722 SOUTH PORTLAND, ME 04106 FAX. (207) 780-6726						
STRUCTURE: VT RTE 107 OVER WHITE RIVER				DRWN:	DATE:	
				EEO	10/14	
				CHKD:	DATE:	
				PCP	10/18	
LOCATION: BETHEL, VT.				JOB NO.	DWG NO.	
PROJ NO. BRF 022-1(14)				498	23	
CUSTOMER: BECK & BELLUCCI					REV. Δ	

EEO This Nov 17, 2011 09:44:27 AM c:\pwworking\brf\022\1(14)\23.dwg