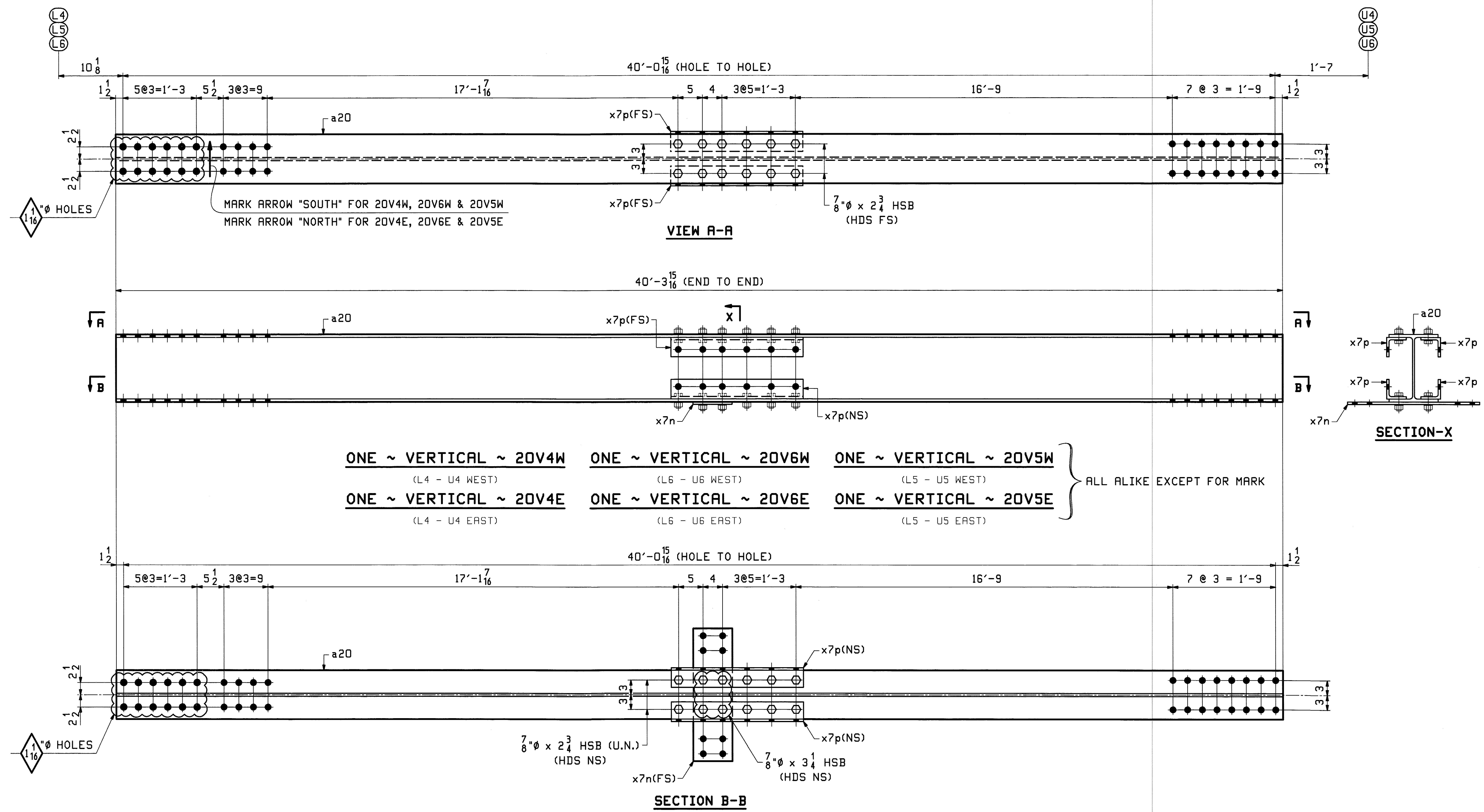


ABM INFO		SHIP	BILL OF MATERIAL				JOB NO.	DRAWING NO.	REV.
PAGE	LINE	MARK	QTY	MARK	MATERIAL	LENGTH FT INCHES	REMARKS	WT	PROCUREMENT NOTES
		20V5W	1		VERTICAL			2628	
6	L		1	a20	W 14x61	40 3/16	M270-50T2		
5	E		1	x7n	PL 1/2xB	2 3			
5	D		4	x7p	L 4x4x1/2	2 3	M270-36		
21	E		20		7/8 HSB	0 2 1/2	MECH. GALV. B325-1		
21	G		4		7/8 HSB	0 3 1/4	MECH. GALV. B325-1		
21	X		24		7/8 HSW		MECH. GALV. F436		
21	Y		24		LOAD IND. 7 WASH FOR 8 HSB		MECH. GALV. F436		
		20V5E	1		VERTICAL			2628	
6	L		1	a20	W 14x61	40 3/16	M270-50T2		
5	E		1	x7n	PL 1/2xB	2 3			
5	D		4	x7p	L 4x4x1/2	2 3	M270-36		
21	E		20		7/8 HSB	0 2 1/2	MECH. GALV. B325-1		
21	G		4		7/8 HSB	0 3 1/4	MECH. GALV. B325-1		
21	X		24		7/8 HSW		MECH. GALV. F436		
21	Y		24		LOAD IND. 7 WASH FOR 8 HSB		MECH. GALV. F436		

ABM INFO		SHIP	BILL OF MATERIAL				JOB NO.	DRAWING NO.	REV.
PAGE	LINE	MARK	QTY	MARK	MATERIAL	LENGTH FT INCHES	REMARKS	WT	PROCUREMENT NOTES
		20V4W	1		VERTICAL			2628	
6	L		1	a20	W 14x61	40 3/16	M270-50T2		
5	E		1	x7n	PL 1/2xB	2 3			
5	D		4	x7p	L 4x4x1/2	2 3	M270-36		
21	E		20		7/8 HSB	0 2 1/2	MECH. GALV. B325-1		
21	G		4		7/8 HSB	0 3 1/4	MECH. GALV. B325-1		
21	X		24		7/8 HSW		MECH. GALV. F436		
21	Y		24		LOAD IND. 7 WASH FOR 8 HSB		MECH. GALV. F436		
		20V4E	1		VERTICAL			2628	
6	L		1	a20	W 14x61	40 3/16	M270-50T2		
5	E		1	x7n	PL 1/2xB	2 3			
5	D		4	x7p	L 4x4x1/2	2 3	M270-36		
21	E		20		7/8 HSB	0 2 1/2	MECH. GALV. B325-1		
21	G		4		7/8 HSB	0 3 1/4	MECH. GALV. B325-1		
21	X		24		7/8 HSW		MECH. GALV. F436		
21	Y		24		LOAD IND. 7 WASH FOR 8 HSB		MECH. GALV. F436		



Vermont Agency of Transportation
RECEIVED
 CK'D BY M.C.L. OK'D BY S.S.S.
 January 10 2012
 RESUBMIT APPROVED ✓
 BY J. LACROIX DATE 01-12-2012

NOTES:
 1. FOR GENERAL NOTES SEE SHEET GNI.

REV.	DATE	REMARKS	DWN	CHK	APVL	SHOP
0						
MATERIAL:		SURFACE PREP. & PRINT:		HOLES:		SHOP BOLTS:
M270-50 (UN)		HOT-DIP GALV.		15/16 (UN)		7/8 (UN)
DESCRIPTION: VERTICALS (L4-U4, L6-U6, L5-U5)						
CASCO BAY STEEL STRUCTURES, INC. 1 WALLACE AVE. PHONE (207) 780-6722 SOUTH PORTLAND, ME 04106 FAX. (207) 780-6726						
STRUCTURE: VT RTE 107 OVER WHITE RIVER				DRAWN:	DATE:	
				EEO	10/13	
				CHKD:	DATE:	
				PCP	10/14	
LOCATION: BETHEL, VT.				JOB NO.	DWG NO.	
PROJ NO. BRF 022-1(14)				498	20	
CUSTOMER: BECK & BELLUCCI				REV.	△	

PCP Thu, Nov 17, 2011 12:27:00 PM \\nasrv\pdk\p071001 Rev0