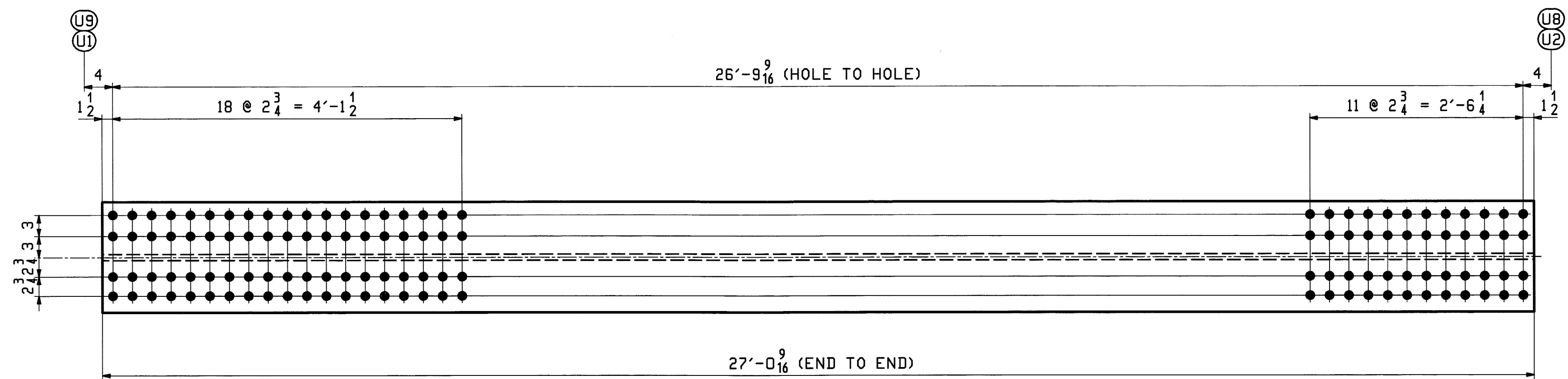


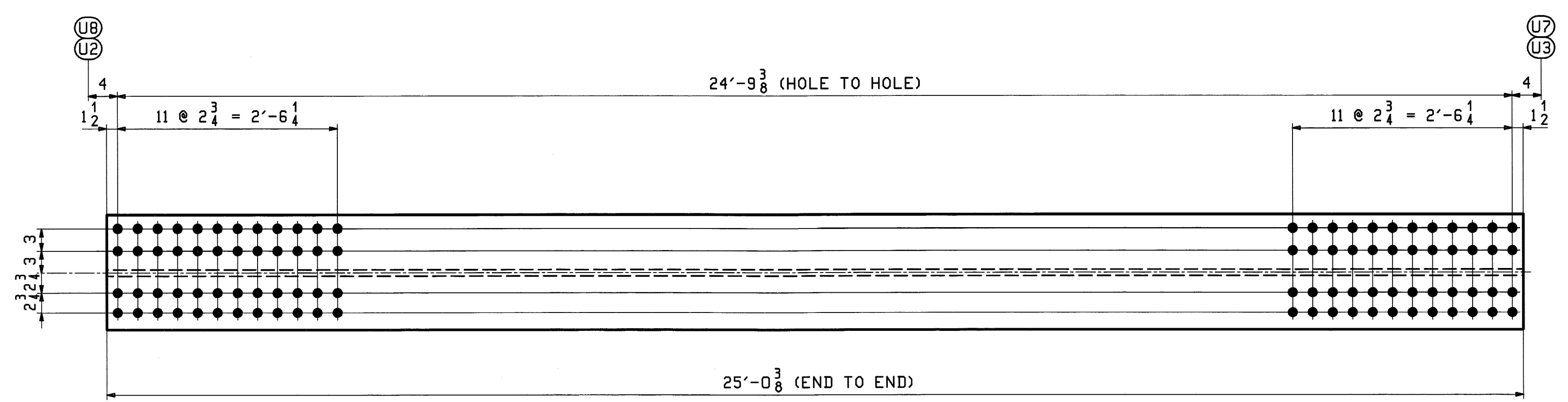
ONE ~ END POST ~ 12EP1W (L10 - U1 WEST)
ONE ~ END POST ~ 12EP1E (L10 - U1 EAST)
ONE ~ END POST ~ 12EP10W (L10 - U9 WEST)
ONE ~ END POST ~ 12EP10E (L10 - U9 EAST)

ALL ALIKE EXCEPT FOR MARK



ONE ~ TOP CHORD ~ 12TC2W (U1 - U2 WEST)
ONE ~ TOP CHORD ~ 12TC2E (U1 - U2 EAST)
ONE ~ TOP CHORD ~ 12TC9W (U9 - U8 WEST)
ONE ~ TOP CHORD ~ 12TC9E (U9 - U8 EAST)

ALL ALIKE EXCEPT FOR MARK



ONE ~ TOP CHORD ~ 12TC3W (U2 - U3 WEST)
ONE ~ TOP CHORD ~ 12TC3E (U2 - U3 EAST)
ONE ~ TOP CHORD ~ 12TC8W (U8 - U7 WEST)
ONE ~ TOP CHORD ~ 12TC8E (U8 - U7 EAST)

ALL ALIKE EXCEPT FOR MARK

PAGE	LINE	MARK	QTY	MARK	MATERIAL	LENGTH		REMARKS	WT	PROCUREMENT NOTES
						FT	INCHES			
6	B	12EP1W	1		W 14x311	33	5 3/8		10402	
6	B	12EP1E	1		W 14x311	33	5 3/8		10402	
6	B	12EP10W	1		W 14x311	33	5 3/8		10402	
6	B	12EP10E	1		W 14x311	33	5 3/8		10402	
6	C	12TC2W	1		W 14x193	27	0 9/16		5220	
6	C	12TC2E	1		W 14x193	27	0 9/16		5220	
6	C	12TC9W	1		W 14x193	27	0 9/16		5220	
6	C	12TC9E	1		W 14x193	27	0 9/16		5220	
6	D	12TC3W	1		W 14x193	25	0 3/8		4831	
6	D	12TC3E	1		W 14x193	25	0 3/8		4831	
6	D	12TC8W	1		W 14x193	25	0 3/8		4831	
6	D	12TC8E	1		W 14x193	25	0 3/8		4831	

- NOTES:
- FOR GENERAL NOTES SEE SHEET GNI.
 - HOLES IN BOTH FLANGES ARE ALIKE.
 - "SHIP" MARKS INDICATED ON THIS SHEET ARE FOR THE FABRICATION PROCESS, DELIVERED COMPONENTS MAY BE PRE-ASSEMBLED AND MARKED DIFFERENTLY.

Vermont Agency of Transportation
RECEIVED
 CK'D BY M.C.L. OK'D BY S.S.S.
 January 10 2012
 RESUBMIT APPROVED ✓
 BY J. LACROIX DATE 01-12-2012

REV.	DATE	REMARKS	DWN	CHK	APVL	SHOP
1	1/03/12	APPROVAL COMMENTS	EEO	PCP	MAN	9 2012
2	11/21/11	REMOVE MARKS x4h FROM ASSEMBLY			NOV 30 2011	
3	0				NOV 18 2011	

MATERIAL: M270-50 SURFACE PREP. & PAINT: HOT-DIP GALV. HOLES: 15 16 Ø (UN) SHOP BOLTS: NONE

DESCRIPTION: END POSTS & TOP CHORDS (L0-U1, L10-U9, U1-U2, U9-U8, U2-U3, U8-U7)
 CASCO BAY STEEL STRUCTURES, INC.
 1 WALLACE AVE. PHONE (207) 780-6722
 SOUTH PORTLAND, ME 04106 FAX. (207) 780-6726

STRUCTURE: VT RTE 107 OVER WHITE RIVER	DRAWN: EEO	DATE: 10/11
	CHKD: PCP	DATE: 10/14
LOCATION: BETHEL, VT.	JOB NO. 498	DWG NO. 12
PROJ NO. BRF 022-1(14)		REV. 12
CUSTOMER: BECK & BELLUCCI		

PCP 1/11/12 10:03 AM 2012 10:03 AM