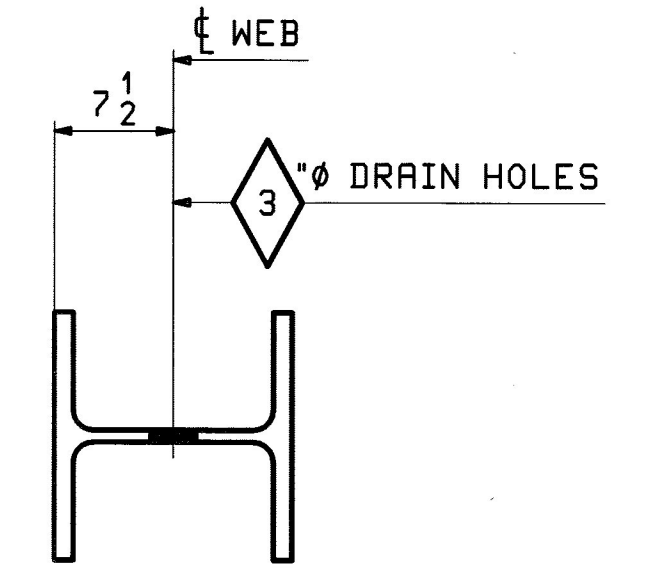


| ABM INFO | | SHIP | | | BILL OF MATERIAL | | JOB NO. | DRAWING NO. | REV. |
|----------|------|--------|-----|------|------------------|---------------------|-----------------|-------------|----------------------|
| | | | | | | | 498 | 11 | |
| PAGE | LINE | MARK | QTY | MARK | MATERIAL | LENGTH FT INCHES | REMARKS | WT | PROCUREMENT NOTES |
| 1 | C | 11BC1W | 1 | W | 14x159 | 49 1 1/4 | M270-50F2 (FCM) | 780E | |
| 1 | C | 11BC1E | 1 | W | 14x159 | 49 1 1/4 | M270-50F2 (FCM) | 780E | |
| 1 | C | 11BC5W | 1 | W | 14x159 | 49 1 1/4 | M270-50F2 (FCM) | 780E | |
| 1 | C | 11BC5E | 1 | W | 14x159 | 49 1 1/4 | M270-50F2 (FCM) | 780E | |
| 1 | B | 11BC2W | 1 | W | 14x159 | 49 11 1/16 | M270-50F2 (FCM) | 7944 | |
| 1 | B | 11BC2E | 1 | W | 14x159 | 49 11 1/16 | M270-50F2 (FCM) | 7944 | |
| 1 | B | 11BC4W | 1 | W | 14x159 | 49 11 1/16 | M270-50F2 (FCM) | 7944 | |
| 1 | B | 11BC4E | 1 | W | 14x159 | 49 11 1/16 | M270-50F2 (FCM) | 7944 | |
| 1 | B | 11BC3W | 1 | W | 14x159 | 49 11 1/2 | M270-50F2 (FCM) | 7943 | |
| 1 | B | 11BC3E | 1 | W | 14x159 | 49 11 1/2 | M270-50F2 (FCM) | 7943 | |



SECTION-X
 Vermont Agency of Transportation
RECEIVED
 CK'D BY M.C.L. OK'D BY S.S.S.
 January 10 2012
 RESUBMIT APPROVED ✓
 BY J. LACROIX DATE 01-12-2012

- NOTES:
 1. FOR GENERAL NOTES SEE SHEET GNI.
 2. F2 & FCM - DENOTES FRACTURE CRITICAL MATERIAL.
 3. HOLES IN BOTH FLANGES ARE ALIKE.
 4. "SHIP" MARKS INDICATED ON THIS SHEET ARE FOR THE FABRICATION PROCESS, DELEVERED COMPONENTS MAY BE PRE-ASSEMBLED AND MARKED DIFFERENTLY.

| | | | | | | |
|---|------------------------|------------|-------------|-------------|------|------|
| 1/03/12 | APPROVAL COMMENTS | EEO | PCP | JAN 9 2012 | | |
| 0 | | | | NOV 18 2011 | | |
| REV. | DATE | REMARKS | DWN | CHK | APVL | SHOP |
| MATERIAL: | SURFACE PREP. & PAINT: | HOLES: | SHOP BOLTS: | | | |
| M270-50 (UN) | HOT-DIP GALV. | 15/16 (UN) | NONE | | | |
| DESCRIPTION: BOTTOM CHORDS | | | | | | |
| CASCO BAY STEEL STRUCTURES, INC. 1 WALLACE AVE. PHONE (207) 780-6722 SOUTH PORTLAND, ME 04106 FAX. (207) 780-6726 | | | | | | |
| STRUCTURE: VT RTE 107 OVER WHITE RIVER | | | DRAWN: | DATE: | | |
| | | | EEO | 10/10 | | |
| | | | CHKD: | DATE: | | |
| | | | PCP | 10/12 | | |
| LOCATION: BETHEL, VT. | | | JOB NO. | DWG NO. | | |
| PROJ NO. BRF 022-1(14) | | | 498 | 11 | | |
| CUSTOMER: BECK & BELLUCCI | | | REV. 11 | | | |

PCP File: 101_01_2012_1010403.Plot Date: 1/10/12 10:33:41 AM