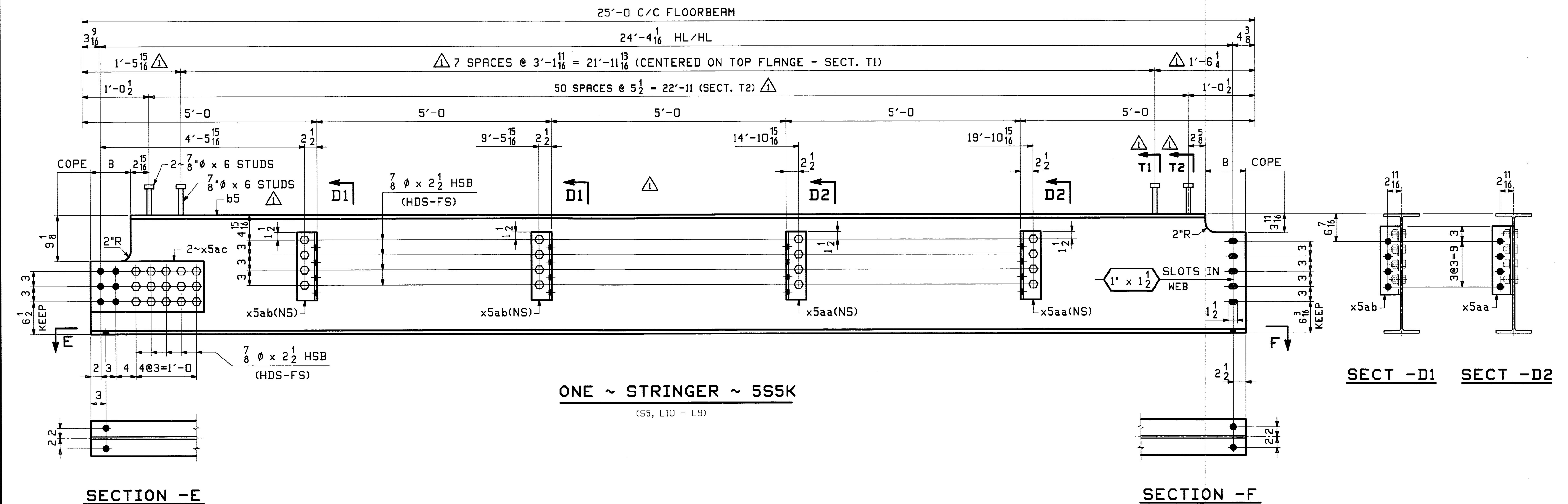


ONE ~ STRINGER ~ 5S1K  
(S1, L10 - L9)

SECTION - B

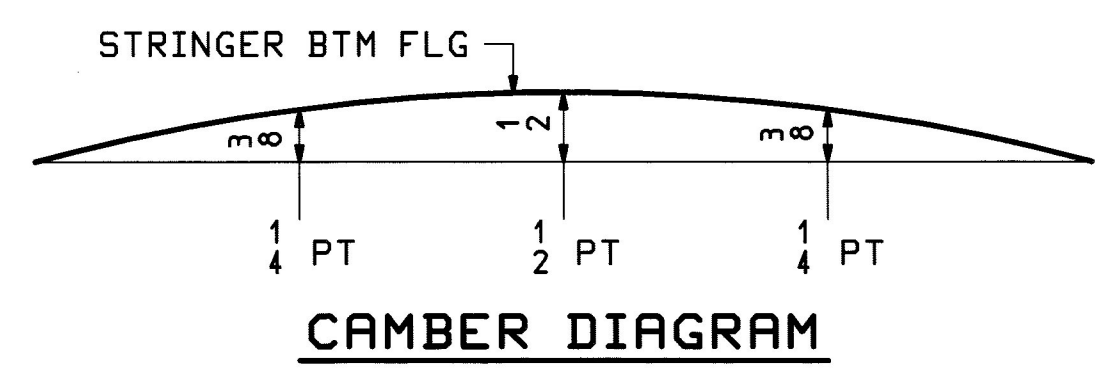
SECTION - C



ONE ~ STRINGER ~ 5S5K  
(S5, L10 - L9)

SECTION - E

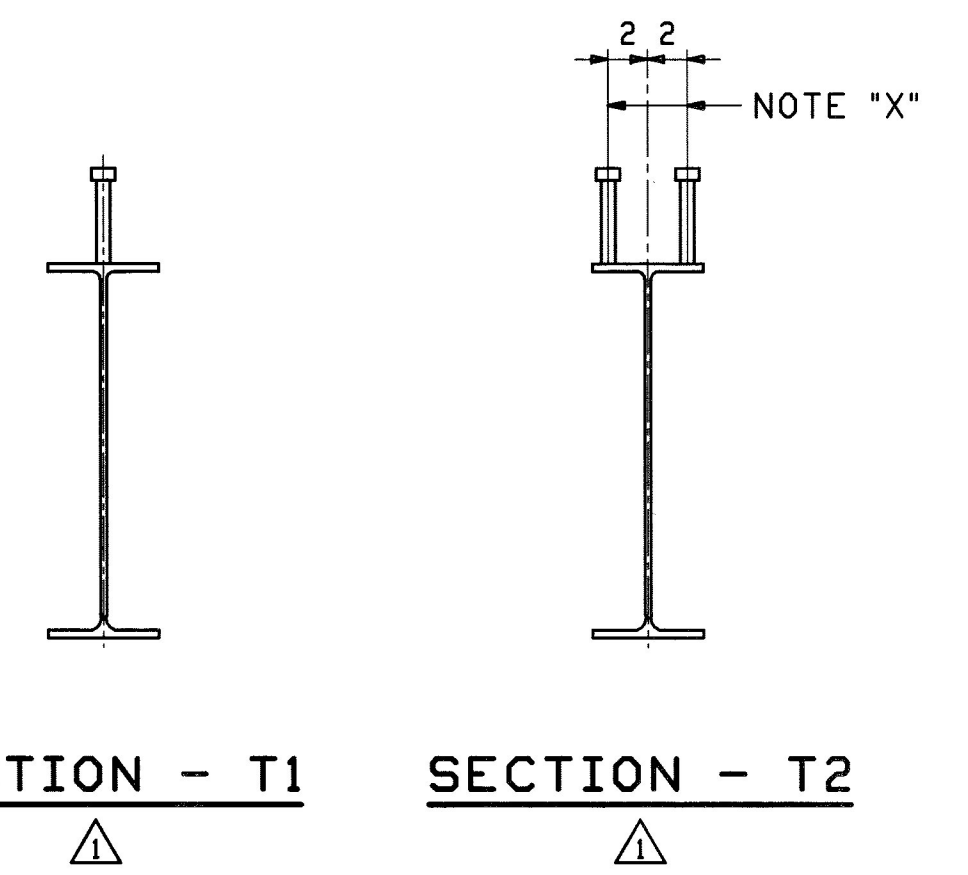
SECTION - F



CAMBER DIAGRAM

- NOTES:
- MILL CAMBER UP.
  - FOR GENERAL NOTES SEE DWG. GNI.
  - FOR STANDARD DETAILS SEE DWG. X5.
  - ALL BOLTS SHALL BE FULLY TORQUED (UN).
  - EACH BOLT SHALL HAVE 1-HARD FLAT WASHER & 1-LOAD INDICATOR WASHER.
  - T2 DENOTES MATERIAL SUBJECT TO CHARPY V-NOTCH TESTING

ABM INFO		SHIP		BILL OF MATERIAL				JOB NO.	DRAWING NO.	REV.
PAGE	LINE	MARK	QTY	MARK	MATERIAL	LENGTH	REMARKS	WT	PROCUREMENT NOTES	
						FT	INCHES			
		SS1K	1		STRINGER				1670	
1	Y		1	a5	W 24x55	24	M270-50T2	1359		
2	Z		4	x5aa	L 4x4x2	1	M270-36	57		
2	Z		4	x5ab	L 4x4x2	1	M270-36	57		
3	T		2	x5ac	PL 5/16x10	1		40		
20	C		110		STUD 3/8"	0	3108	127		
21	D		31		7/8" HSB	0	MECH. GALV. 3325-1	25		
21	X		31		7/8" HSB	0	MECH. GALV. 2436	2		
21	Y		31		LOAD IND. 7 WASH FOR 8" HSB	0	MECH. GALV. 2436	2		
		5S5K	1		STRINGER				1670	
1	Y		1	b5	W 24x55	24	M270-50T2	1359		
2	Z		4	x5aa	L 4x4x2	1	M270-36	57		
2	Z		4	x5ab	L 4x4x2	1	M270-36	57		
3	T		2	x5ac	PL 5/16x10	1		40		
20	C		110		STUD 3/8"	0	3108	127		
21	D		31		7/8" HSB	0	MECH. GALV. 3325-1	25		
21	X		31		7/8" HSB	0	MECH. GALV. 2436	2		
21	Y		31		LOAD IND. 7 WASH FOR 8" HSB	0	MECH. GALV. 2436	2		



NOTE "X":  
WELD STUDS SHOWN IN SECT. T2 AFTER WELDING STUDS ALONG CENTERLINE. STUDS SHOWN IN SECT. T2 MAY BE MOVED UP TO 1" MAX, AS REQ'D, BY SHOP TO CLEAR STUDS ALONG CENTERLINE.

REV.	DATE	REMARKS	DWN	CHK	APVL	SHOP
1	1/03/12	APPROVAL COMMENTS	EEO	PCP	JAN 9 2012	
0					NOV 18 2011	
MATERIAL:		SURFACE PREP. & PAINT:		HOLES:		SHOP BOLTS:
M270-50 (UN)		HOT-DIP GALV.		15/16" (UN)		7/8" (UN)
DESCRIPTION: STRINGERS						
CASCO BAY STEEL STRUCTURES, INC. 1 WALLACE AVE. PHONE (207) 780-6722 SOUTH PORTLAND, ME 04106 FAX. (207) 780-6726						
STRUCTURE: VT RTE 107 OVER WHITE RIVER			DRWN:	DATE:		
			TJB	10/14		
			CHKD:	DATE:		
			PCP	10/19		
LOCATION: BETHEL, VT.			JOB NO.	DWG NO.		
PROJ NO. BRP 022-1(14)			498	5		
CUSTOMER: BECK & BELLUCCI				REV.	A	

Vermont Agency of Transportation  
**RECEIVED**  
CK'D BY M.C.L. OK'D BY S.S.S.  
January 10 2012  
RESUBMIT APPROVED ✓  
BY J. LACROIX DATE 01-12-2012