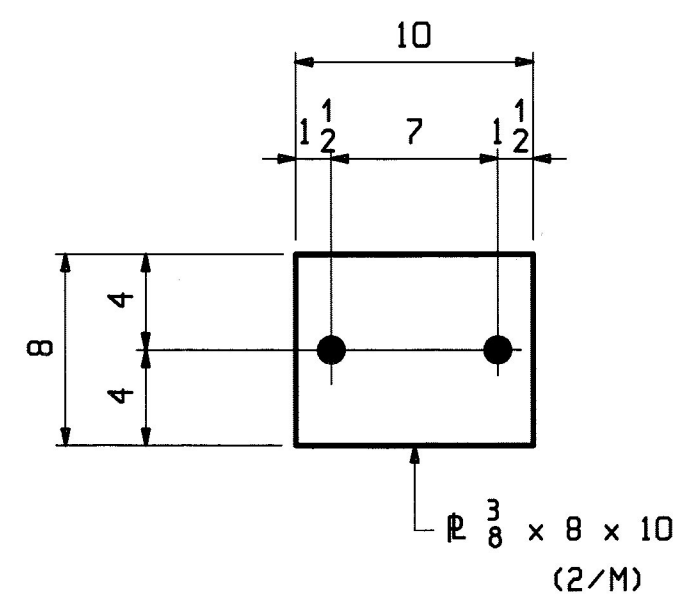
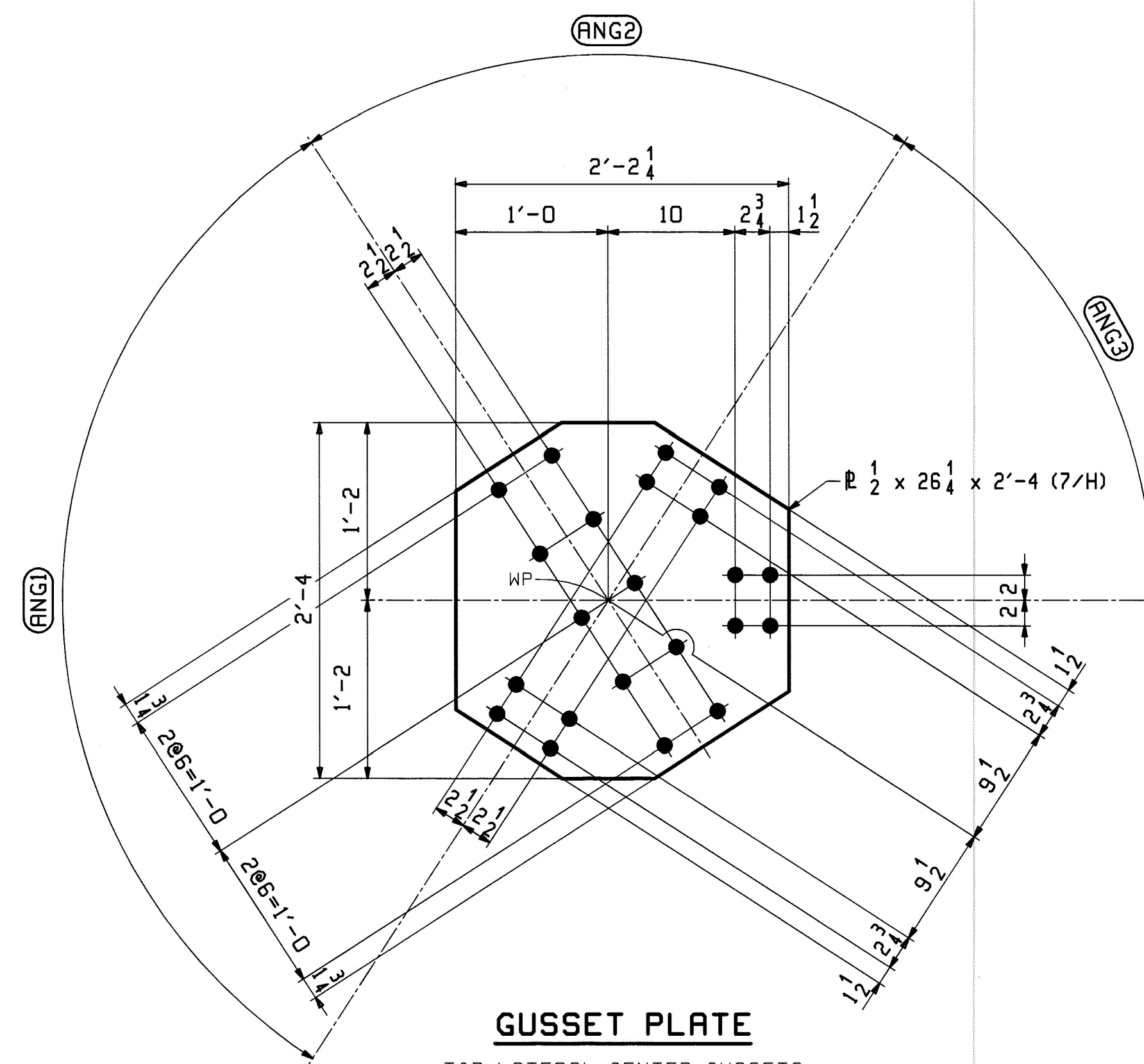


**10 ~ GUSSET PLATES ~ x6a**   
BTM LATERAL CENTER GUSSET



**150 ~ SPACERS ~ x6b**  
BTM LATERALS



**GUSSET PLATE**  
TOP LATERAL CENTER GUSSETS

- BTWN U1 & U2, U8 & U9
- BTWN U2 & U3, U7 & U8
- BTWN U3 & U4, U6 & U7
- BTWN U4 & U5, U5 & U6

MARK	QTY	(ANG1)	(ANG2)	(ANG3)
x6c	4	109.261°	70.739°	54.631°
x6d	4	113.332°	66.668°	56.666°
x6f	4	114.132°	65.868°	57.066°
x6g	4	114.230°	65.770°	57.115°


Vermont Agency of Transportation  
**RECEIVED**

CK'D BY M.C.L. OK'D BY S.S.S.

January 10 2012

RESUBMIT APPROVED   
BY J. LACROIX DATE 01-12-2012

NOTES:  
1. FOR GENERAL NOTES SEE SHEET GNI.

REV.	DATE	REMARKS	DWN	CHK	APVL	SHOP
0	11/22/11	REV'D MARK	EEO	PCP	AN 9 2012	
					NOV 30 2011	
					NOV 18 2011	
MATERIAL:		SURFACE PREP. & PAINT:	HOLES:		SHOP BOLTS:	
M270-50 (UN)		HOT-DIP GALV.	15 16 Ø (UN)		7 8 Ø (UN)	
DESCRIPTION: TOP & BOTTOM LATERAL BRACING STANDARDS						
CASCO BAY STEEL STRUCTURES, INC.						
1 WALLACE AVE.			PHONE (207) 780-6722			
SOUTH PORTLAND, ME 04106			FAX. (207) 780-6726		TENSOR 3073	
STRUCTURE: VT RTE 107 OVER WHITE RIVER				DRAWN:	DATE:	
				TJB	10/17	
				EEO		
				CHKD:	DATE:	
				PCP	10/19	
LOCATION: BETHEL, VT.			JOB NO.		DWG NO.	
PROJ NO. BRP 022-1(14)			498		X6	
CUSTOMER: BECK & BELLUCCI					REV. 