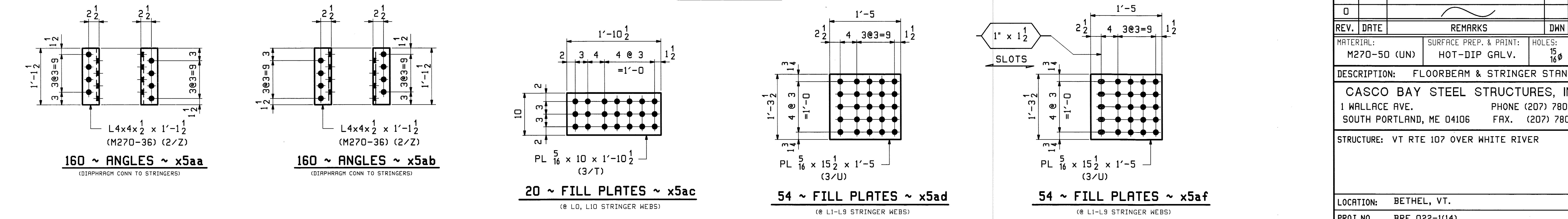


FLOORBEAM STANDARDS

STRINGER STANDARDS



Vermont Agency of Transportation
RECEIVED
CK'D BY M.C.L. OK'D BY S.S.S.
January 10 2012
RESUBMIT APPROVED ✓
BY J. LACROIX DATE 01-12-2012

- NOTES:
1. FOR GENERAL NOTES SEE DWG. GNI.
2. CVN - DENOTES MATERIAL SUBJECT TO CHARPY V-NOTCH TESTING.

REV.	DATE	REMARKS	DWN	CHK	APVL	SHOP
0						
						JAN 9 2012
						NOV 18 2011
MATERIAL:	M270-50 (UN)	SURFACE PREP. & PAINT: HOT-DIP GALV.	HOLES:	15/16 Ø (UN)	SHOP BOLTS:	NONE
DESCRIPTION: FLOORBEAM & STRINGER STANDARDS						
CASCO BAY STEEL STRUCTURES, INC. 1 WALLACE AVE. PHONE (207) 780-6722 SOUTH PORTLAND, ME 04106 FAX. (207) 780-6726						
STRUCTURE: VT RTE 107 OVER WHITE RIVER			DRAWN:	DATE:		
			RB	10/10/11		
			CHKD:	DATE:		
			PCP	10/12/11		
LOCATION:	BETHEL, VT.	JOB NO.	DWG NO.			
PROJ NO.	BRF 022-1(14)	498	X5			
CUSTOMER:	BECK & BELLUCCI		REV.		△	

PCP This Nov 17, 2011 01:58:58 PM C:\msd\proj\022\14\1 Rev D