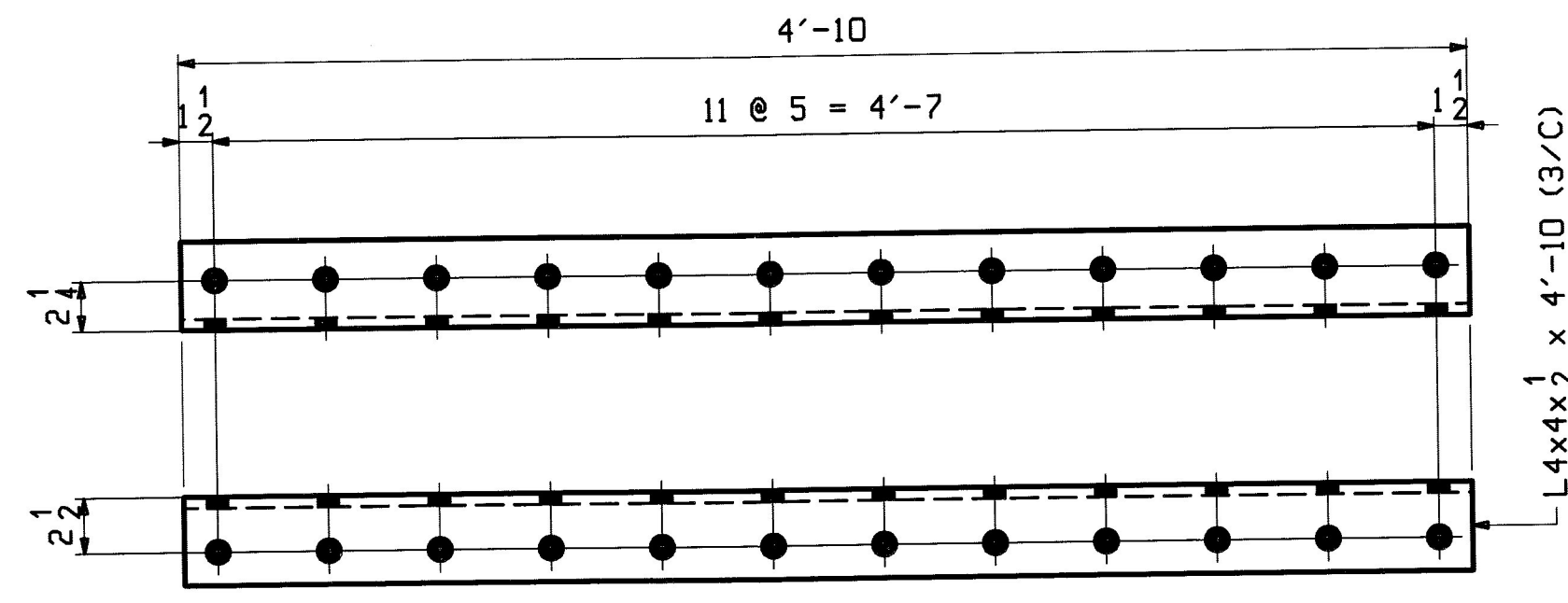


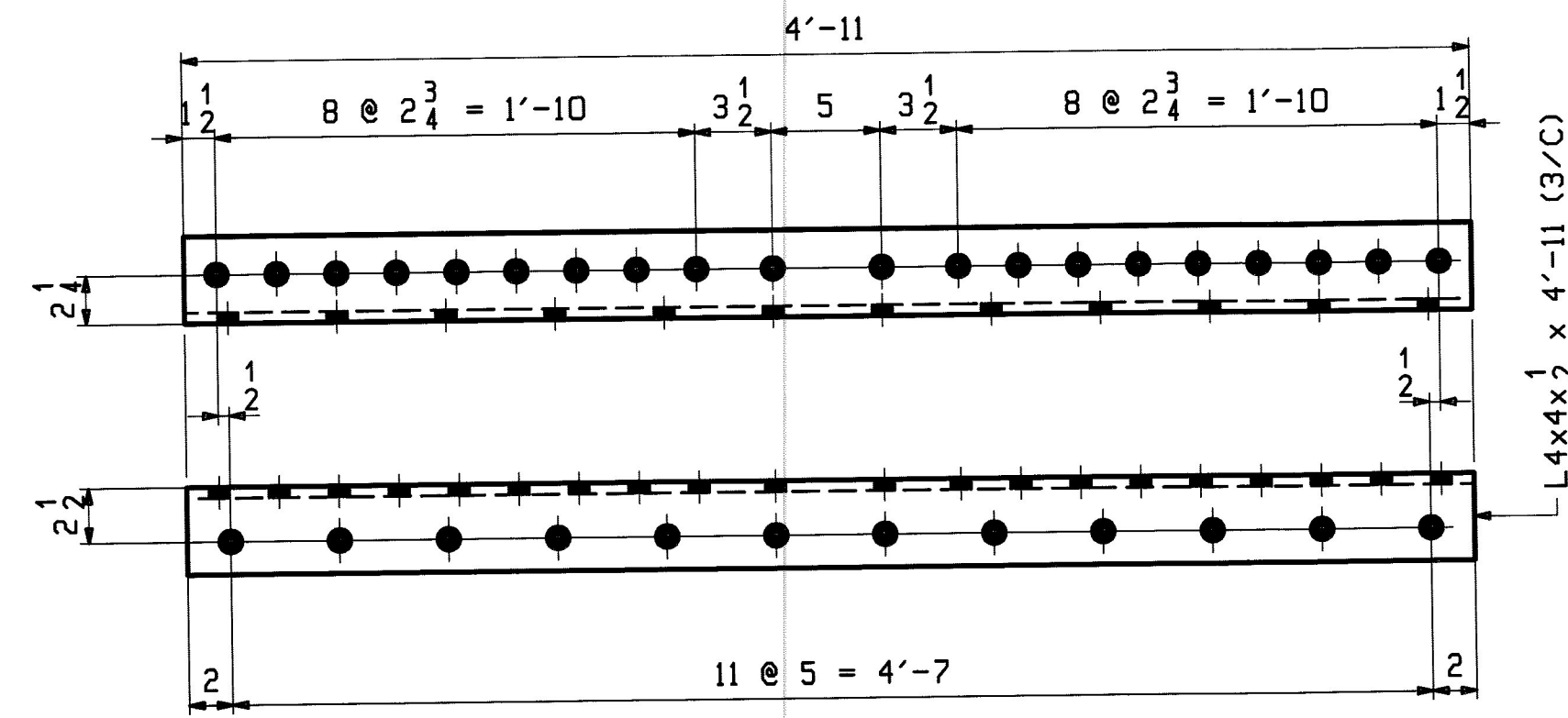
**4 ~ CONN. ANGLES ~ x4a**

BTM CHORD CONN. TO LAT. GUSSET @  
@ L0 & L10



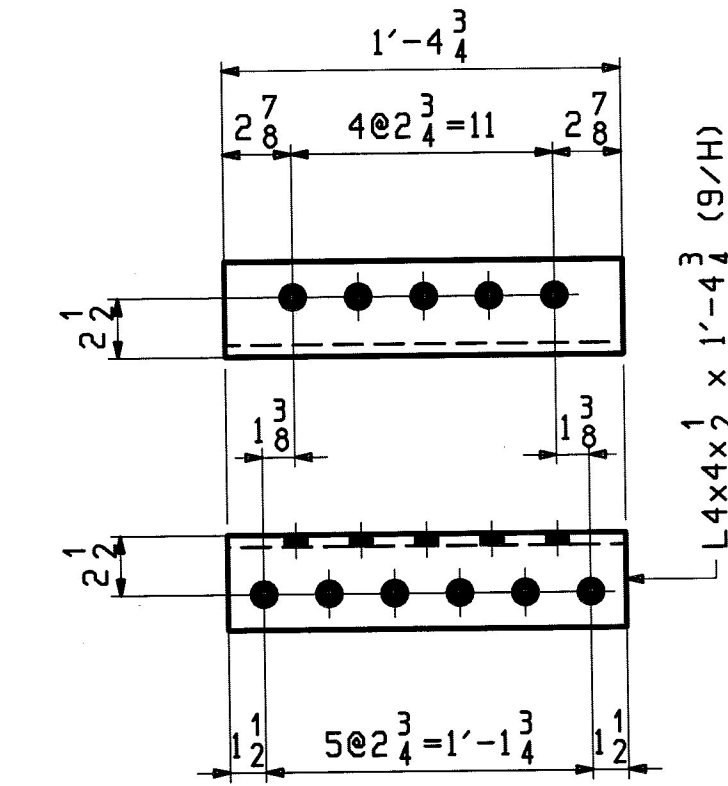
**20 ~ CONN. ANGLES ~ x4b**

BTM CHORD CONN. TO LAT. GUSSET @  
@ L1 & L9, L3 & L7, L5



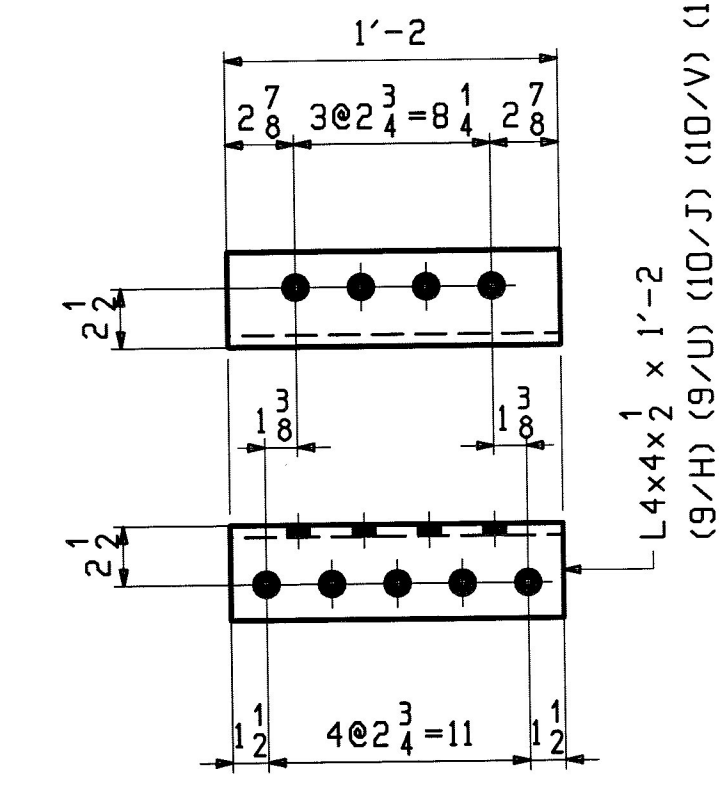
**16 ~ CONN. ANGLES ~ x4c**

BTM CHORD CONN. TO LAT. GUSSET @  
@ L2 & L8, L4 & L6



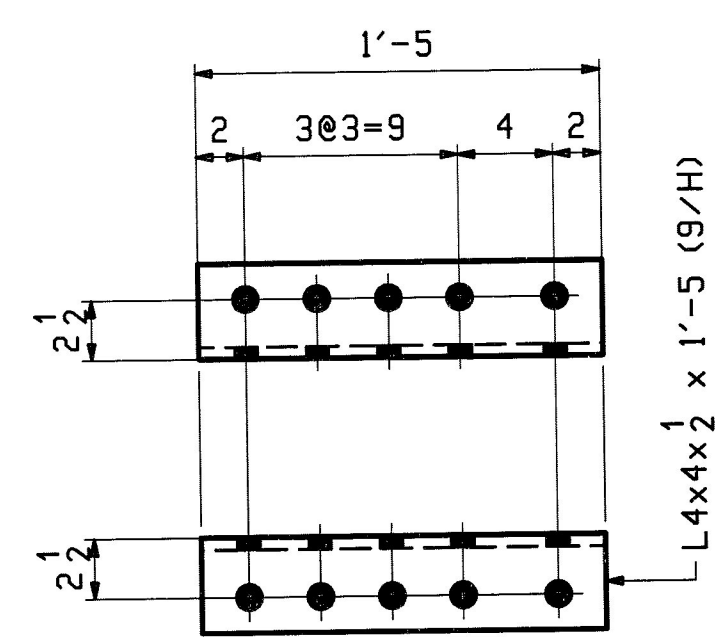
**8 ~ CONN. ANGLES ~ x4d**

TOP CHORD CONN. TO LAT. GUSSET @  
@ U1 & U9



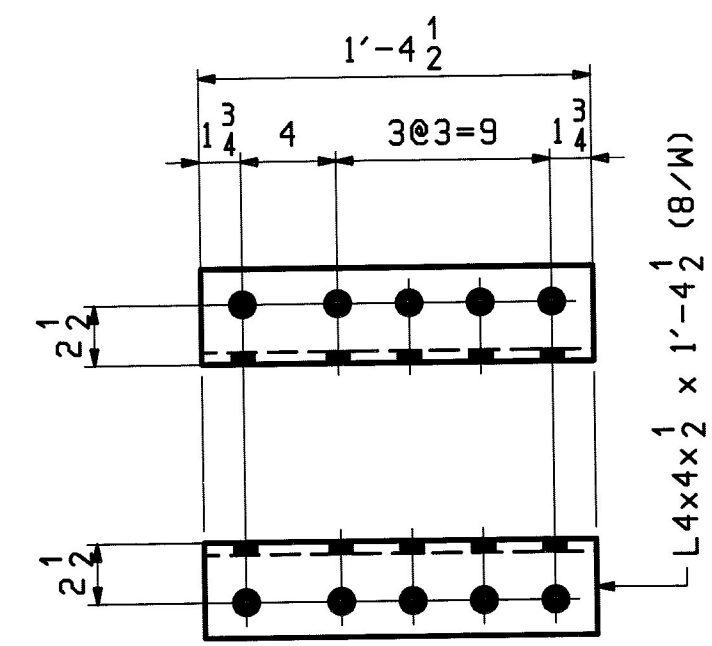
**88 ~ CONN. ANGLES ~ x4f**

TOP CHORD CONN. TO LAT. GUSSET @  
@ U1 - U9



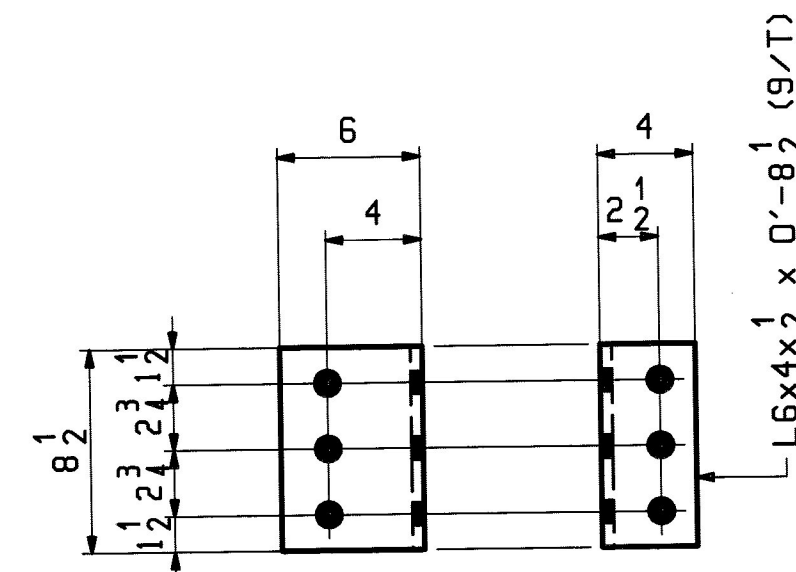
**12 ~ CONN. ANGLES ~ x4g**

END POST CONN. TO LAT. GUSSET @  
@ U1 & U9



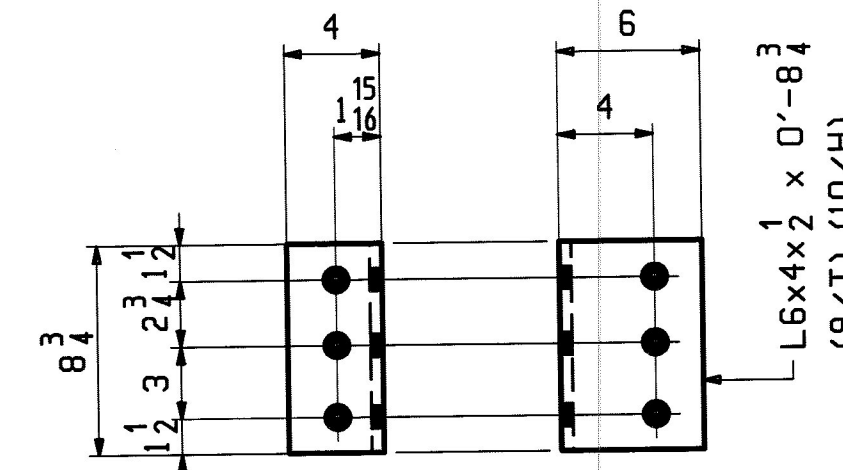
**16 ~ CONN. ANGLES ~ x4h**

END POST CONN. TO PORTAL GUSSET @  
@ U1 & U9



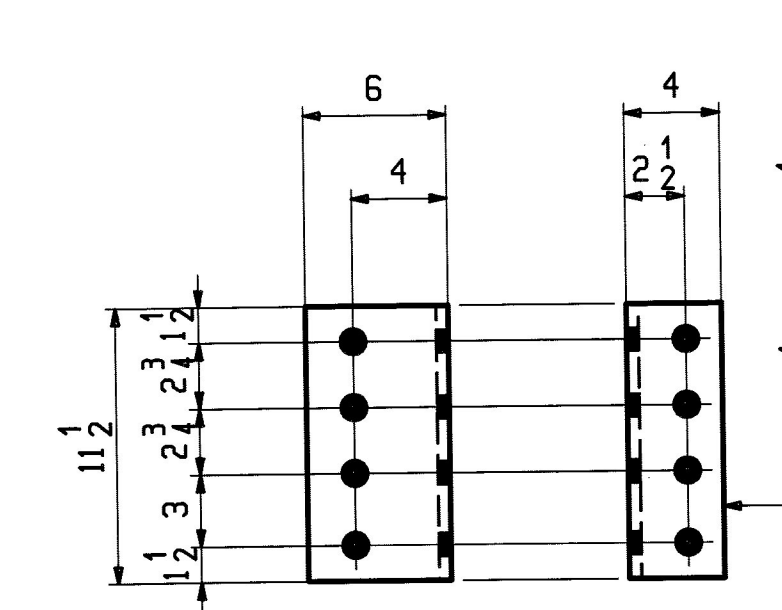
**4 ~ CONN. ANGLES ~ x4k**

TOP CHORD CONN. TO SWAY FRAME GUSSET @  
@ U2 & U8



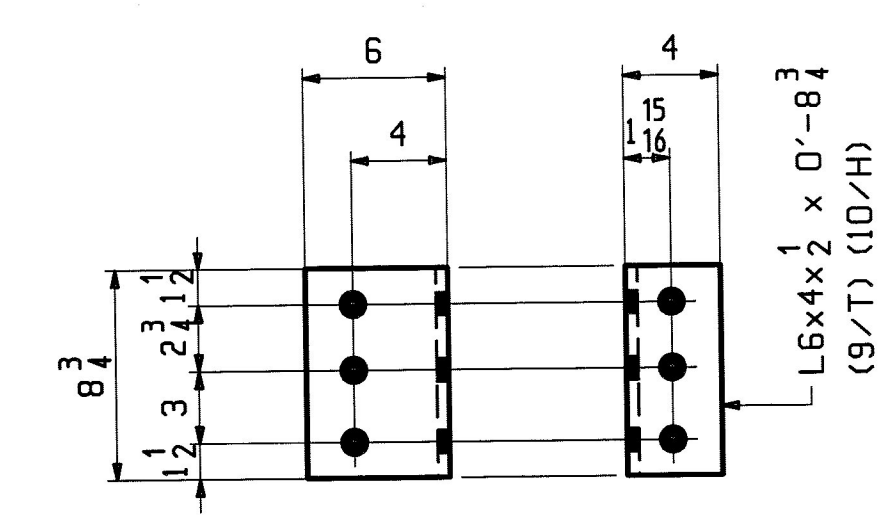
**4 ~ CONN. ANGLES ~ x4m**

TOP CHORD CONN. TO SWAY FRAME GUSSET @  
@ U2 & U8, U3 & U7



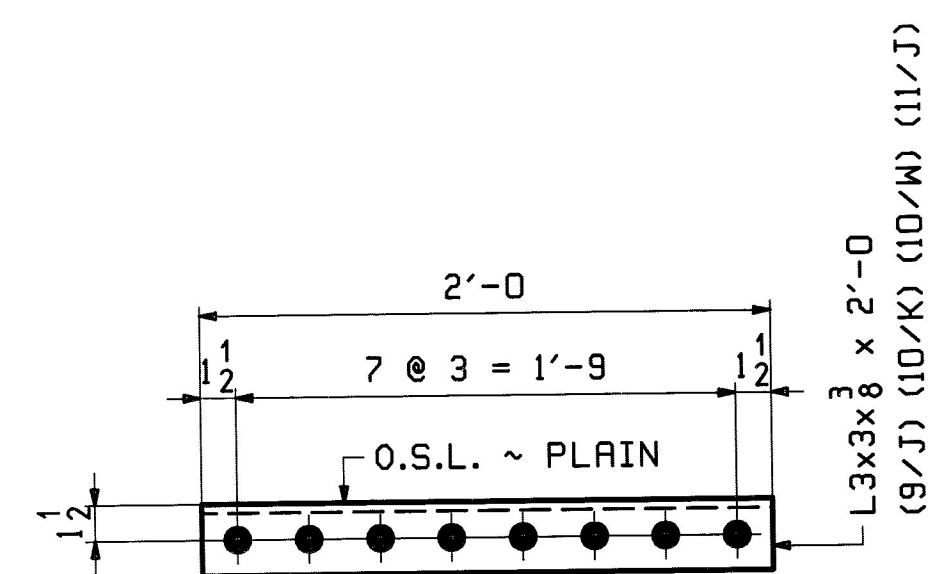
**2 ~ CONN. ANGLES ~ x4n**

TOP CHORD CONN. TO SWAY FRAME GUSSET @  
@ U3 & U7



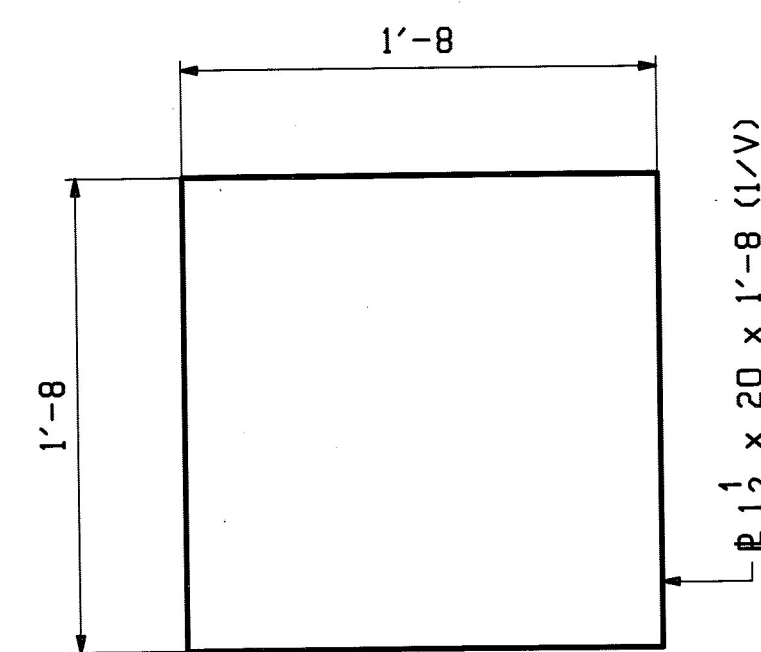
**4 ~ CONN. ANGLES ~ x4p**

TOP CHORD CONN. TO SWAY FRAME GUSSET @  
@ U2 & U8, U3 & U7



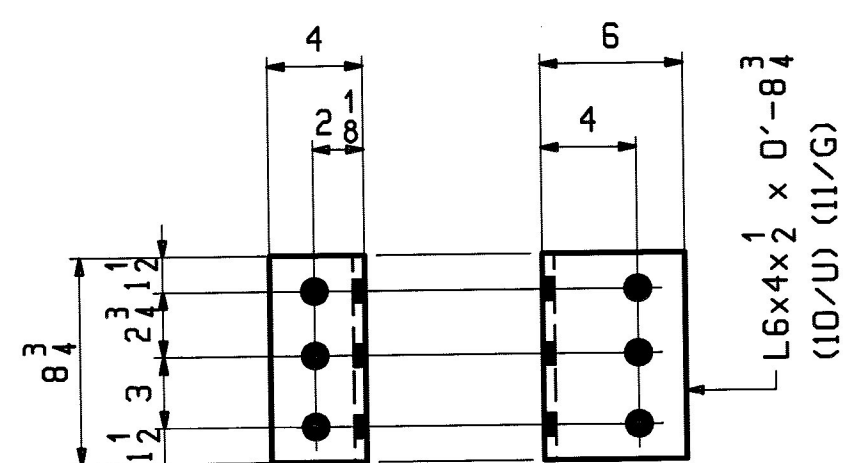
**32 ~ SUPPORT ANGLES ~ x4s**

TOP CHORD GUSSET EDGE SUPPORTS  
@ U1 & U9, U3 & U7, U4 & U6, U5



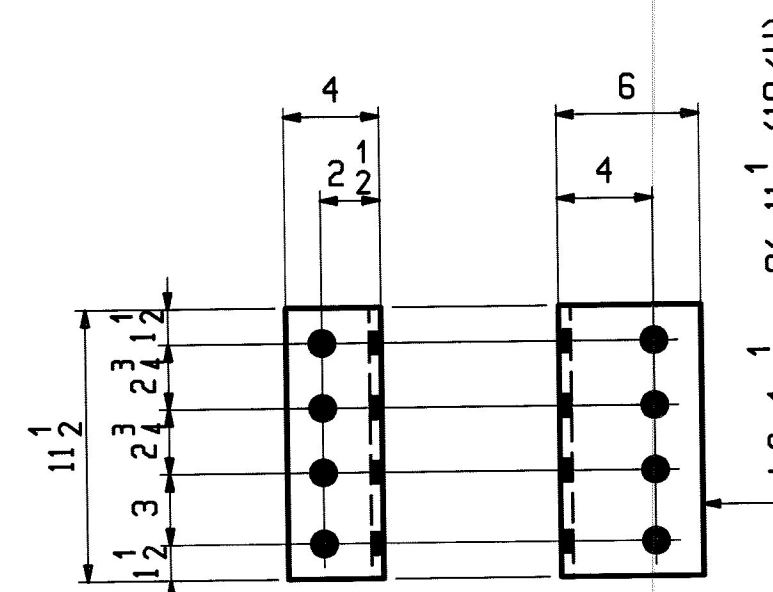
**4 ~ BASE PLATE ~ x4t**

END POST BASE/BEARING PLATE  
@ L0 & L10



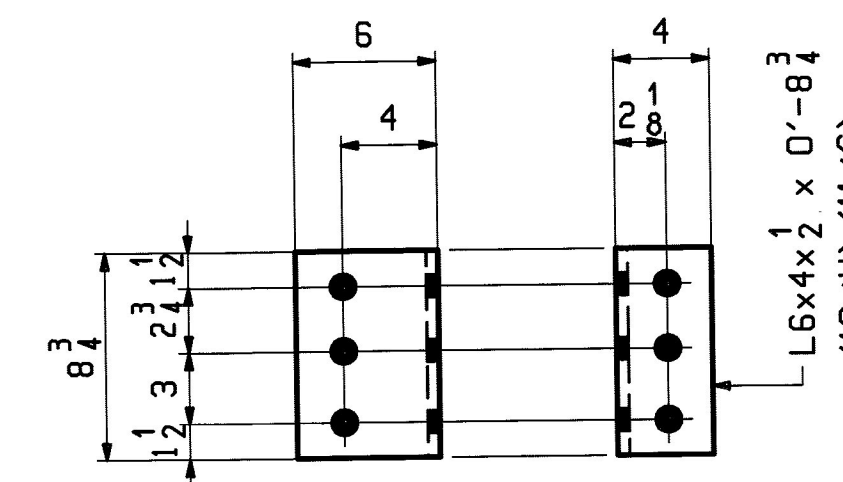
**6 ~ CONN. ANGLES ~ x4aa**

TOP CHORD CONN. TO SWAY FRAME GUSSET @  
@ U4, U5 & U6



**2 ~ CONN. ANGLES ~ x4ab**

TOP CHORD CONN. TO SWAY FRAME GUSSET @  
@ U3 & U7



**6 ~ CONN. ANGLES ~ x4ac**

TOP CHORD CONN. TO SWAY FRAME GUSSET @  
@ U4, U5 & U6

**NOTES:**

1. FOR GENERAL NOTES SEE SHEET GNI.

REV.	DATE	REMARKS	DWN	CHK	APVL	SHOP
0						
				JAN 9 2012		
				OCT 18 2011		
MATERIAL:		SURFACE PREP. & PAINT:		HOLES:		SHOP BOLTS:
M270-36 (UN)		HOT-DIP GALV.		15 16 Ø (UN)		NONE
DESCRIPTION: TRUSS STANDARDS						
CASCO BAY STEEL STRUCTURES, INC.						
1 WALLACE AVE.			PHONE (207) 780-6722			
SOUTH PORTLAND, ME 04106			FAX. (207) 780-6726			
STRUCTURE: VT RTE 107 OVER WHITE RIVER			DRAWN:	DATE:		
			EEO	10/10		
			CHKD:	DATE:		
LOCATION: BETHEL, VT.		JOB NO.		DWG NO.		
PROJ NO. BRP 022-1(14)		498		X4		
CUSTOMER: BECK & BELLUCCI				REV. ▲		

Vermont Agency of Transportation

**RECEIVED**

CK'D BY M.C.L. OK'D BY S.S.S.

January 10 2012

RESUBMIT APPROVED ✓

BY J. LACROIX DATE 01-12-2012