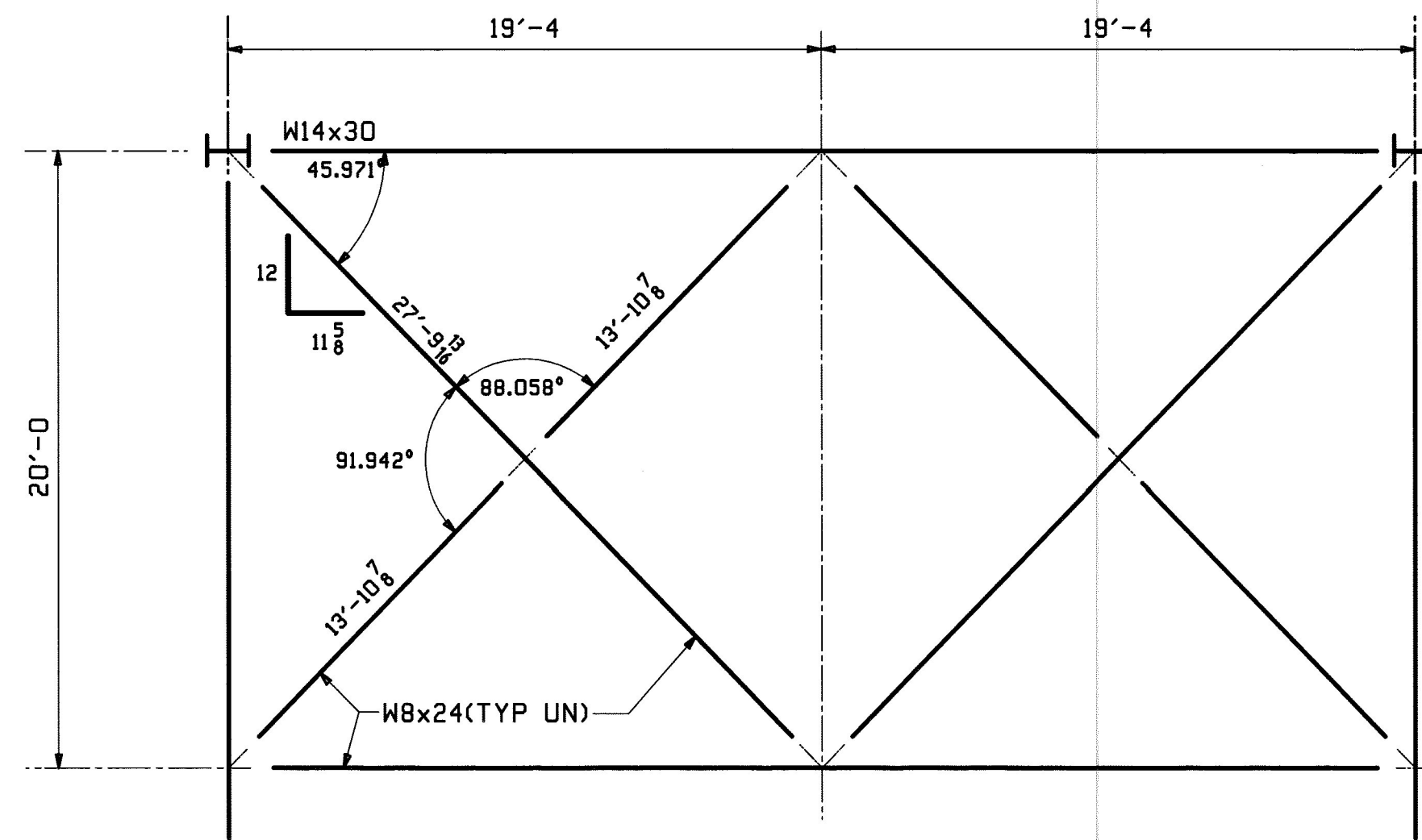
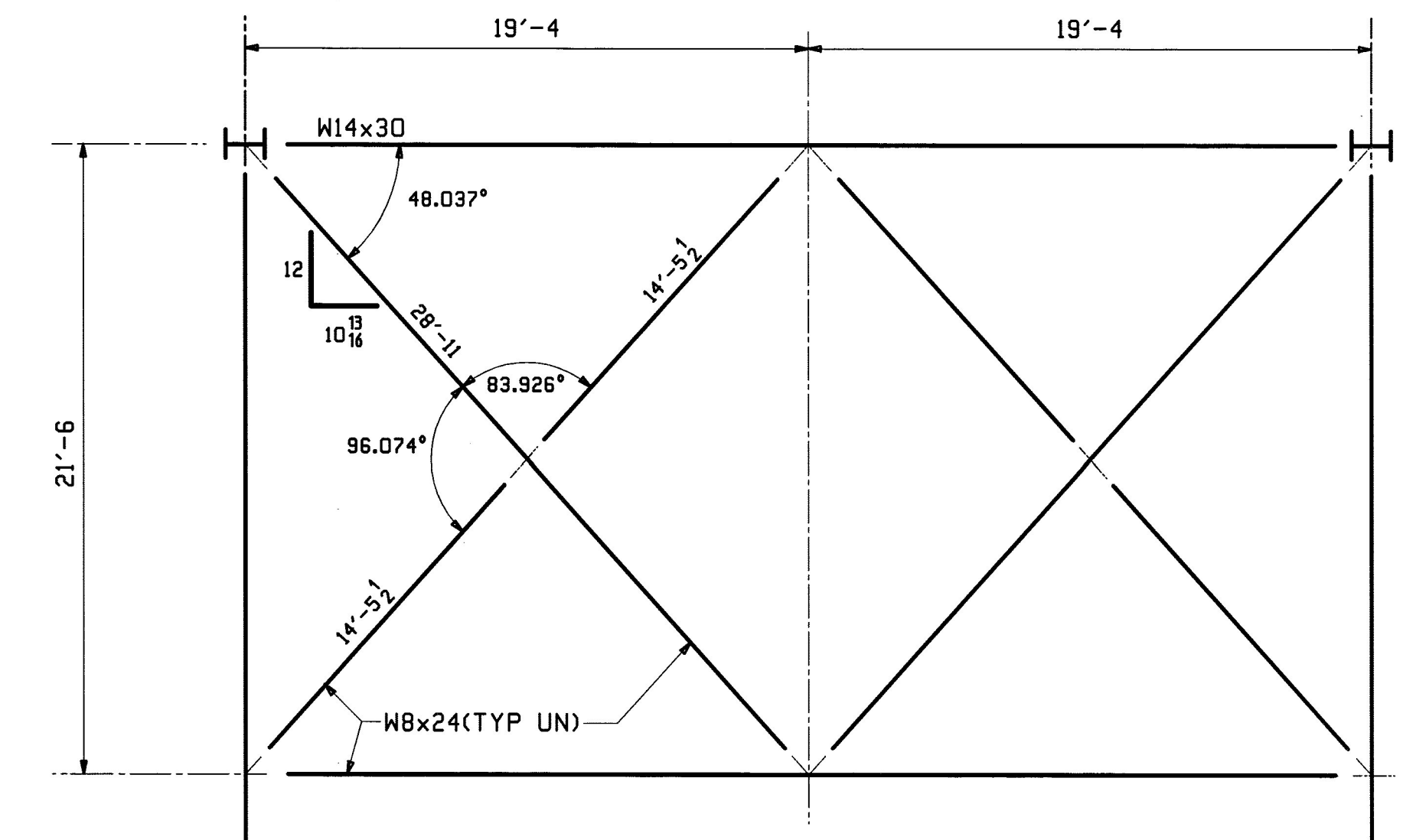


SWAY FRAME @ V2 & V8



SWAY FRAME @ V3 & V7

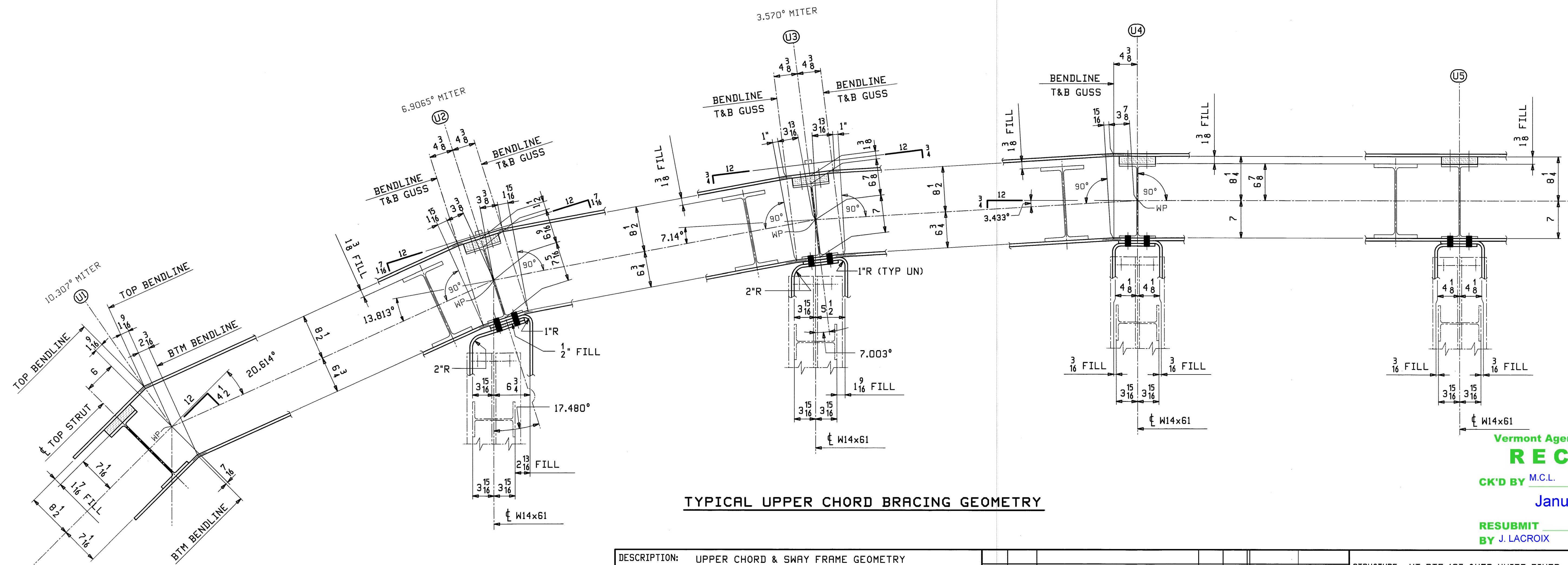


SWAY FRAME @ V4, V5 & V6

**** NOTE ****
 THE PURPOSE OF THIS DRAWING IS TO COORDINATE GEOMETRIC CONTROL INFORMATION. THIS DWG IS SUBMITTED FOR INFORMATION ONLY AND IS NOT INTENDED FOR SHOP FABRICATION.

- NOTES:**
1. ALL SWAY FRAME LENGTHS AND ANGLES ARE BASED ON FINAL TRUSS GEOMETRY.
 2. SWAY FRAMES ARE SYMMETRICAL ABOUT \bar{C} BRIDGE.
 3. WORK THIS SHEET WITH SHEETS WS1-WS3.

TYPICAL SWAY FRAME GEOMETRY



TYPICAL UPPER CHORD BRACING GEOMETRY

Vermont Agency of Transportation
RECEIVED
 CK'D BY M.C.L. OK'D BY S.S.S.
 January 10 2012
 RESUBMIT APPROVED ✓
 BY J. LACROIX DATE 01-12-2012

DESCRIPTION: UPPER CHORD & SWAY FRAME GEOMETRY		STRUCTURE: VT RTE 107 OVER WHITE RIVER	
CASCO BAY STEEL STRUCTURES, INC. 1 WALLACE AVE. SOUTH PORTLAND, ME 04106 PHONE (207) 780-6722 FAX. (207) 780-6726		LOCATION: BETHEL, VT. PROJ NO. BRF 022-1(14) CUSTOMER: BECK & BELLUCCI	
REV.	DATE	REMARKS	DWN CHK APVL SHOP
0	JAN 9 2012 NOV 18 2011		
DRAWN: WL CHKD: PCP		DATE: 09/10 DATE: 09/30	JOB NO. 498 DWG NO. WS4 REV. Δ

11/15/11, Dec 5, 2011 09:41:12 AM
 C:\Users\jml\OneDrive\Documents\022-1(14)\022-1(14) 1 Rev.dwg