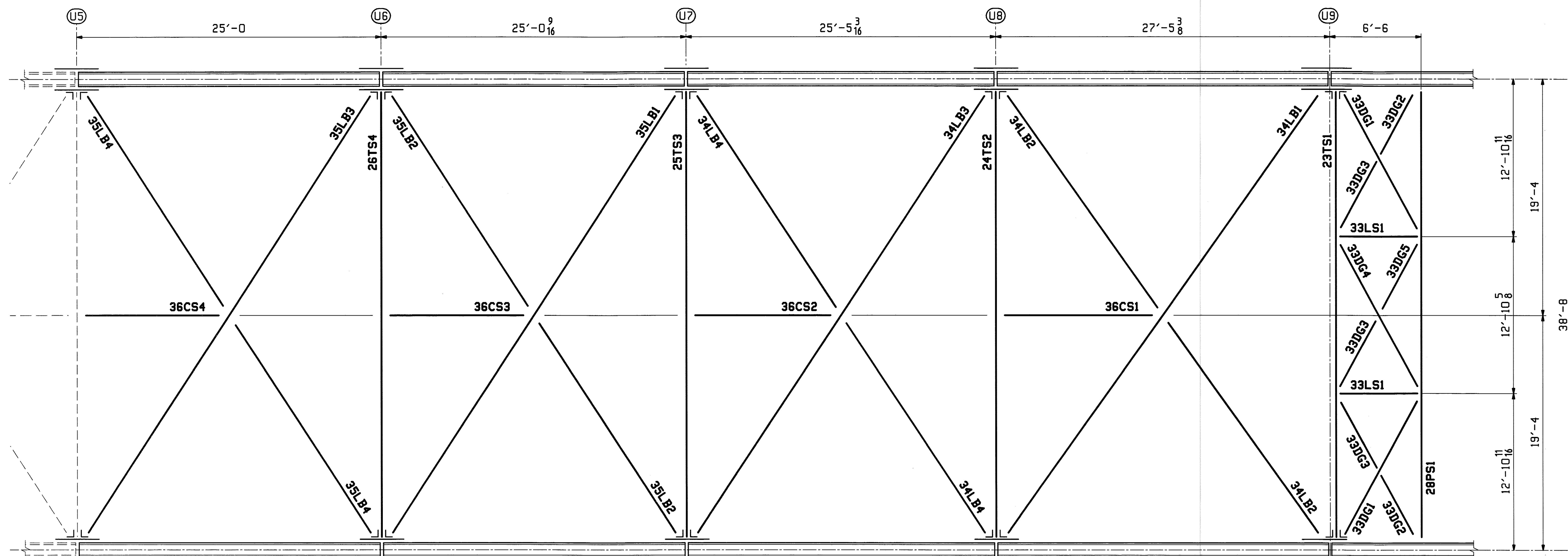


DEVELOPED UPPER CHORD FRAMING PLAN

MATCH LINE
(CONT. BELOW)



DEVELOPED UPPER CHORD FRAMING PLAN (CONTINUED)

MATCH LINE
(CONT. ABOVE)

Vermont Agency of Transportation
RECEIVED
 CK'D BY M.C.L. OK'D BY S.S.S.
 January 10 2012
 RESUBMIT APPROVED ✓
 BY J. LACROIX DATE 01-12-2012

- NOTES:
 1. REFER TO SHEET GNI FOR GENERAL NOTES.
 2. WORK THIS SHEET WITH SHEETS E1, E3 & E4.

| | | | | |
|---|------|------------------------|---------|-------------|
| JAN 9 2012 | | | | |
| REV. DATE | | | | |
| 0 | | | | |
| REV. | DATE | REMARKS | DWN | CHK |
| | | | APVL | SHOP |
| MATERIAL: | | SURFACE PREP. & PAINT: | | HOLES: |
| | | | | SHOP BOLTS: |
| DESCRIPTION: DEVELOPED UPPER CHORD FRAMING PLAN | | | | |
| CASCO BAY STEEL STRUCTURES, INC. | | | | |
| 1 WALLACE AVE. | | PHONE (207) 780-6722 | | |
| SOUTH PORTLAND, ME 04106 | | FAX. (207) 780-6726 | | |
| STRUCTURE: VT RTE 107 OVER WHITE RIVER | | DRAWN: | DATE: | |
| | | EEO | 11/02 | |
| | | CHKD: | DATE: | |
| | | PCP | 11/03 | |
| LOCATION: BETHEL, VT. | | JOB NO. | DWC NO. | |
| PROJ NO. BRF 022-1(14) | | 498 | E2 | |
| CUSTOMER: BECK & BELLUCCI | | | REV. Δ | |

E2 11/03 Rev. 12/2011 01/12/2012 Rev. 0