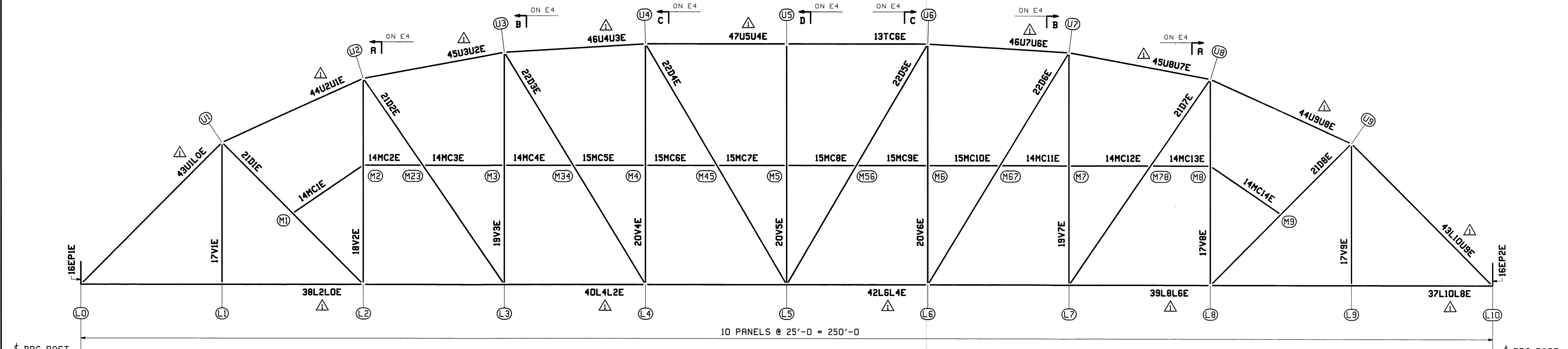


**ELEVATION OF WEST TRUSS**  
(LOOKING WEST)



**ELEVATION OF EAST TRUSS**  
(LOOKING WEST)

Vermont Agency of Transportation  
**RECEIVED**  
 CK'D BY M.C.L. OK'D BY S.S.S.  
 January 10 2012  
 RESUBMIT APPROVED ✓  
 BY J. LACROIX DATE 01-12-2012

NOTES:  
 1. REFER TO SHEET GNI FOR GENERAL NOTES.  
 2. WORK THIS SHEET WITH SHEET E2, E3 & E4.

REV.	DATE	REMARKS	DWN	CHK	APVL	SHOP
1/03/12		APPROVAL COMMENTS	EEO	PCP	JAN 9 2012	
11/22/11		REV'D MARKS	EEO	PCP	NOV 30 2011	
0					NOV 18 2011	

DESCRIPTION: TRUSS ELEVATION FRAMING PLAN	
CASCO BAY STEEL STRUCTURES, INC. 1 WALLACE AVE. PHONE (207) 780-6722 SOUTH PORTLAND, ME 04106 FAX. (207) 780-6726	
STRUCTURE: VT RTE 107 OVER WHITE RIVER	DRAWN: EEO DATE: 10/24
	CHKD: PCP DATE: 11/03
LOCATION: BETHEL, VT.	JOB NO. DWG NO.
PROJ NO. BRF 022-1(14)	498 E1
CUSTOMER: BECK & BELLUCCI	REV. 1

PCP 1/10/12 1:50 PM  
 1/10/12 1:50 PM  
 1/10/12 1:50 PM