

(4) - R1 RAILS

2 1/2" SCH 40 X 6"
w/ log-c GAP
(Fill w/ beads
CAULK)

1/2" SCH 40
(TYP)
A53 GRB

-PRIME

Vermont Agency of Transportation

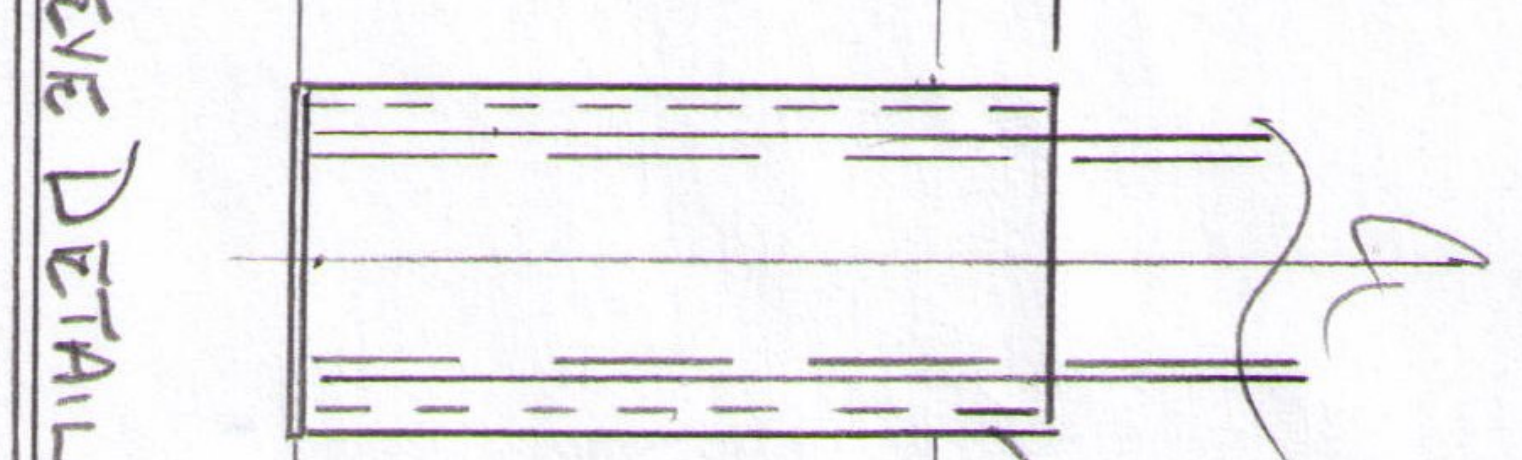
RECEIVED

CK'D BY M.C.L. OK'D BY S.S.S.

May 7 2012

RESUBMIT APPROVED

BY J. LACROIX DATE 05-07-2012



END DETAIL (8) REAR

SCALE		REVISIONS		MERRIMACK SHEET METAL, INC. 119 HALL ST. CONCORD, NH 03301	
DATE		BY	DATE		
DR'N.	CKD.				
AP'VD.					
TITLE			NO.		
BETHEL, VT			BECK + BELMONT		
# BRG-022-1144			# 3944		R1