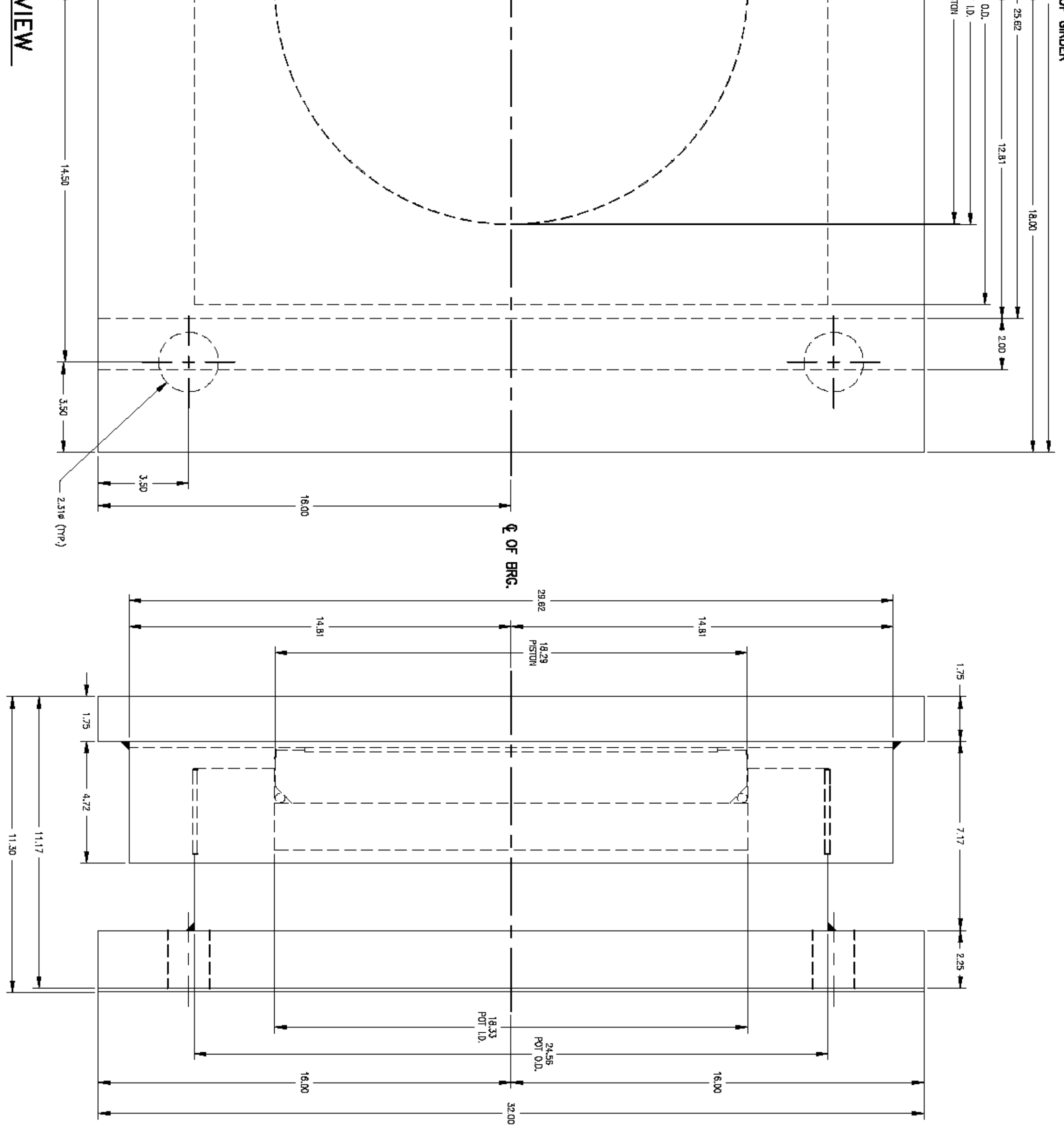
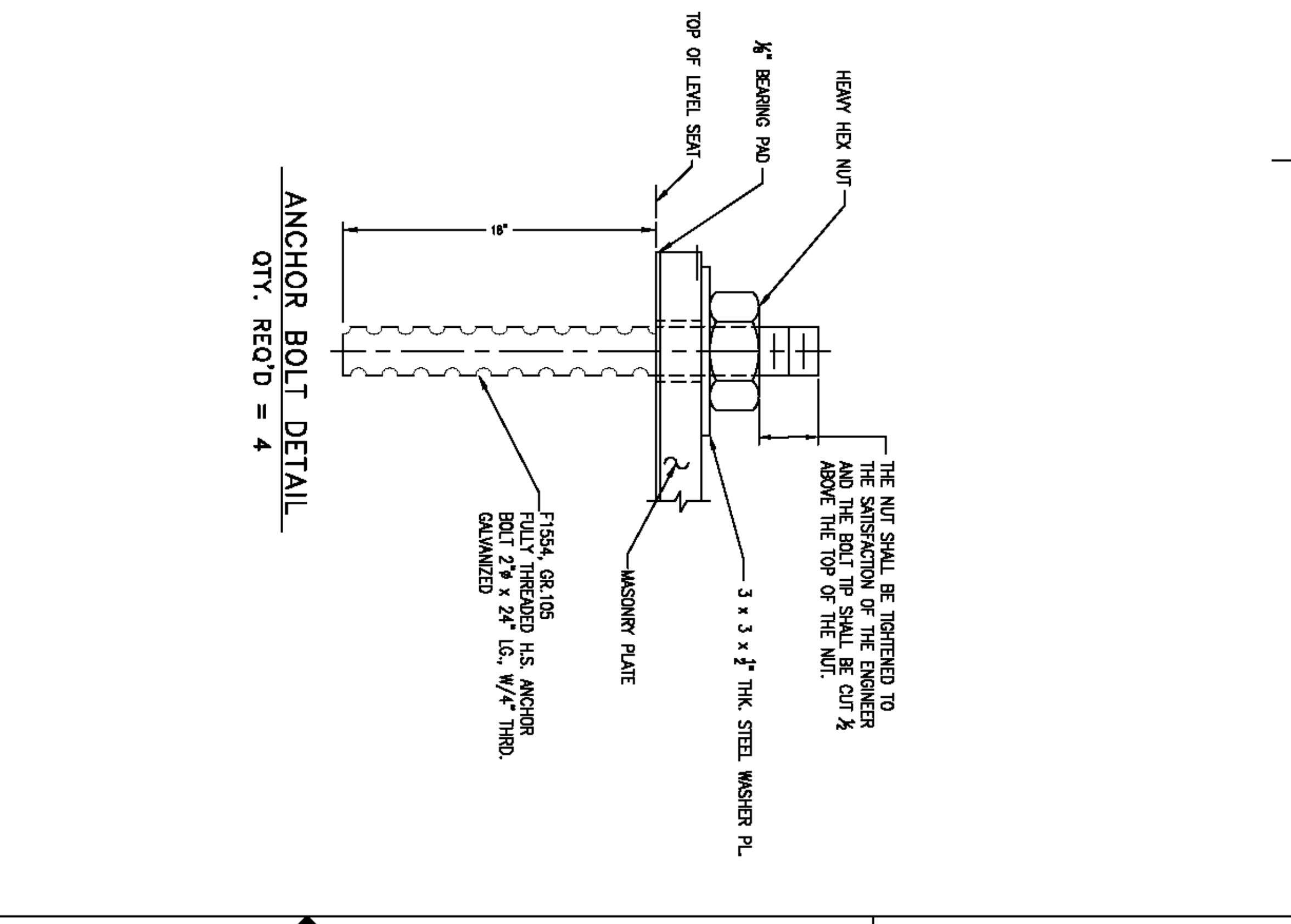


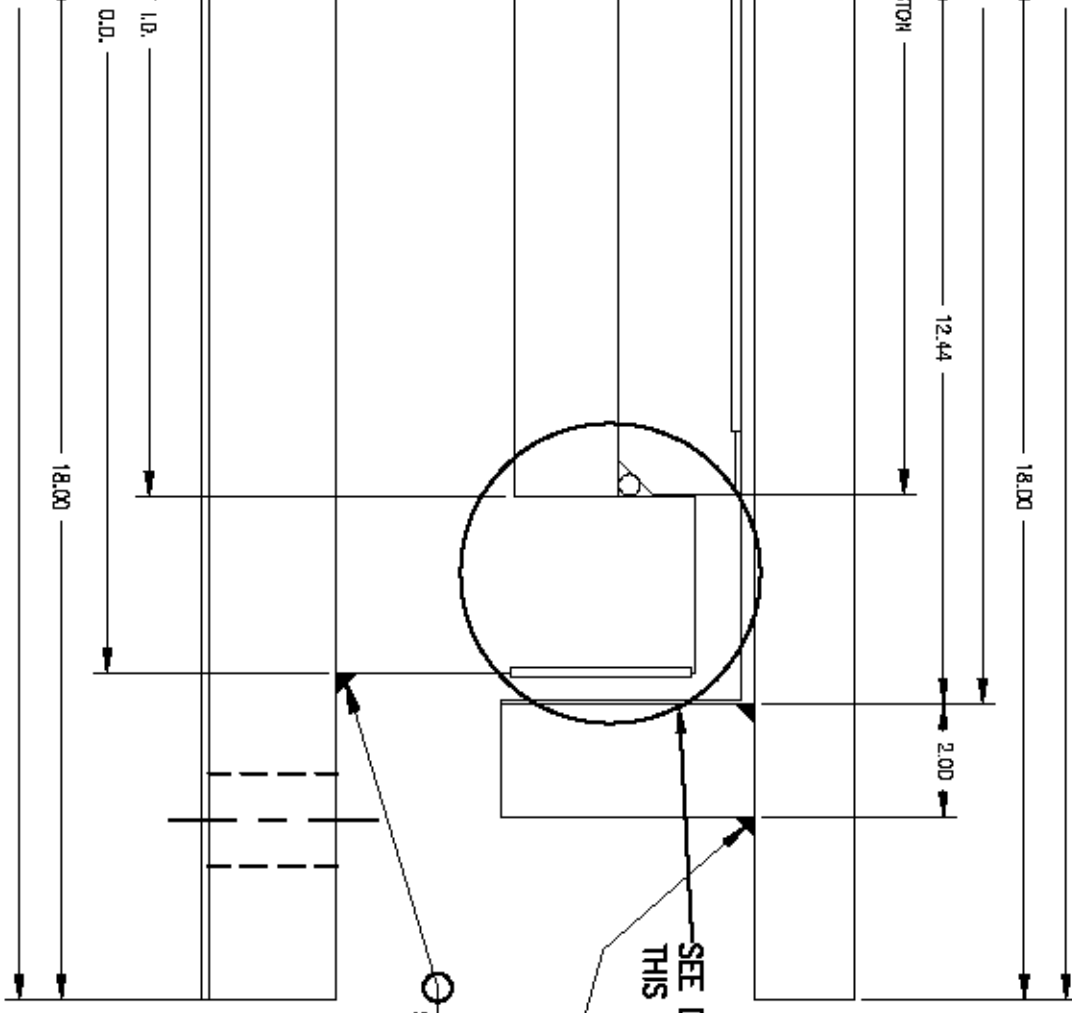
REVISIONS					
ZONE	REV	DESCRIPTION	DATE	REV. BY	APPROVED
-	A	AS PER ENGINEER & CHECKER'S MARKS	8/28/11	E.A.S.	R.F.



SIDE VIEW



ANCHOR BOLT DETAIL
QTY. REQ'D = 4



DETAIL Z

- SOLE PLATE
- 1/8" MIN. CLEARANCE
- 3/8" THK. UNFILLED PTFE SHEET RECESSED 1/8" INTO PISTON
- PISTON
- ELASTOMER DISC
- POT
- 3/8" THK. STAINLESS STEEL SHEET w/ #8 MIRROR FINISH FULLY SEAL WELDED.
- 2 x 4 1/2 x 3/2 GUIDE BAR
- 3/8" THK. UNFILLED PTFE SHEET RECESSED 1/8" INTO POT WALL
- 3/8" BRASS SEALING RING

EXPANSION BEARING (N2)
REQ'D = 1
4 KIIPS

VERMONT AGENCY OF TRANSPORTATION
PROJECT NAME: BETHEL
PROJECT NUMBER: BRF-022-1(14)

AMSCOT
STRUCTURAL PRODUCTS CORP.

SCALE: N.T.S. APPROV'D: R.F. DRAWN BY: P.S.
DATE: 8/17/11 REV: A

FOR: BECK & BELLUCCI SHEET NO 6 of 7 DWG NO: C8B11486A