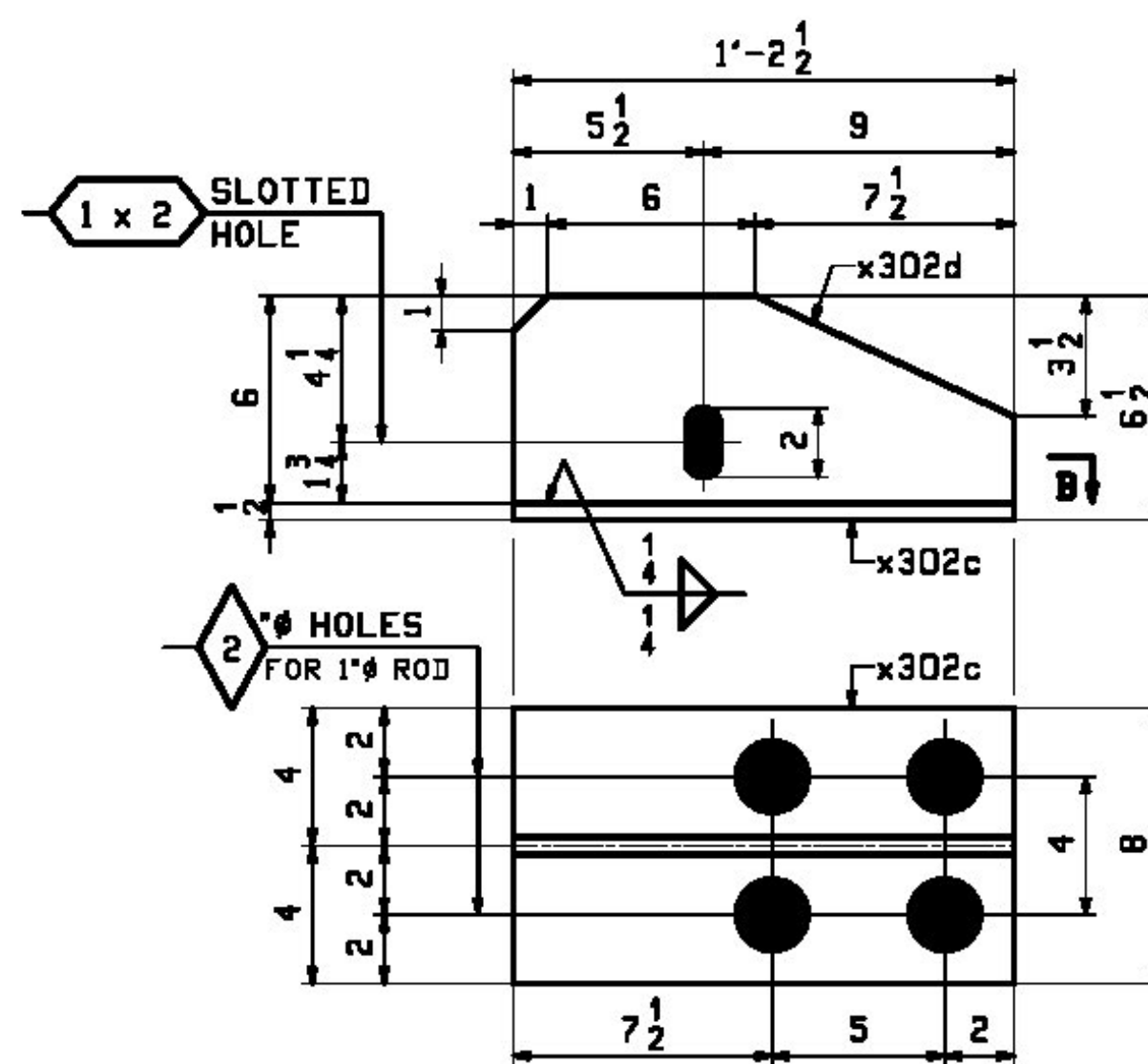


SECTION A

4 ~ BRACKET SUB-ASSEMBLIES ~ X302M1

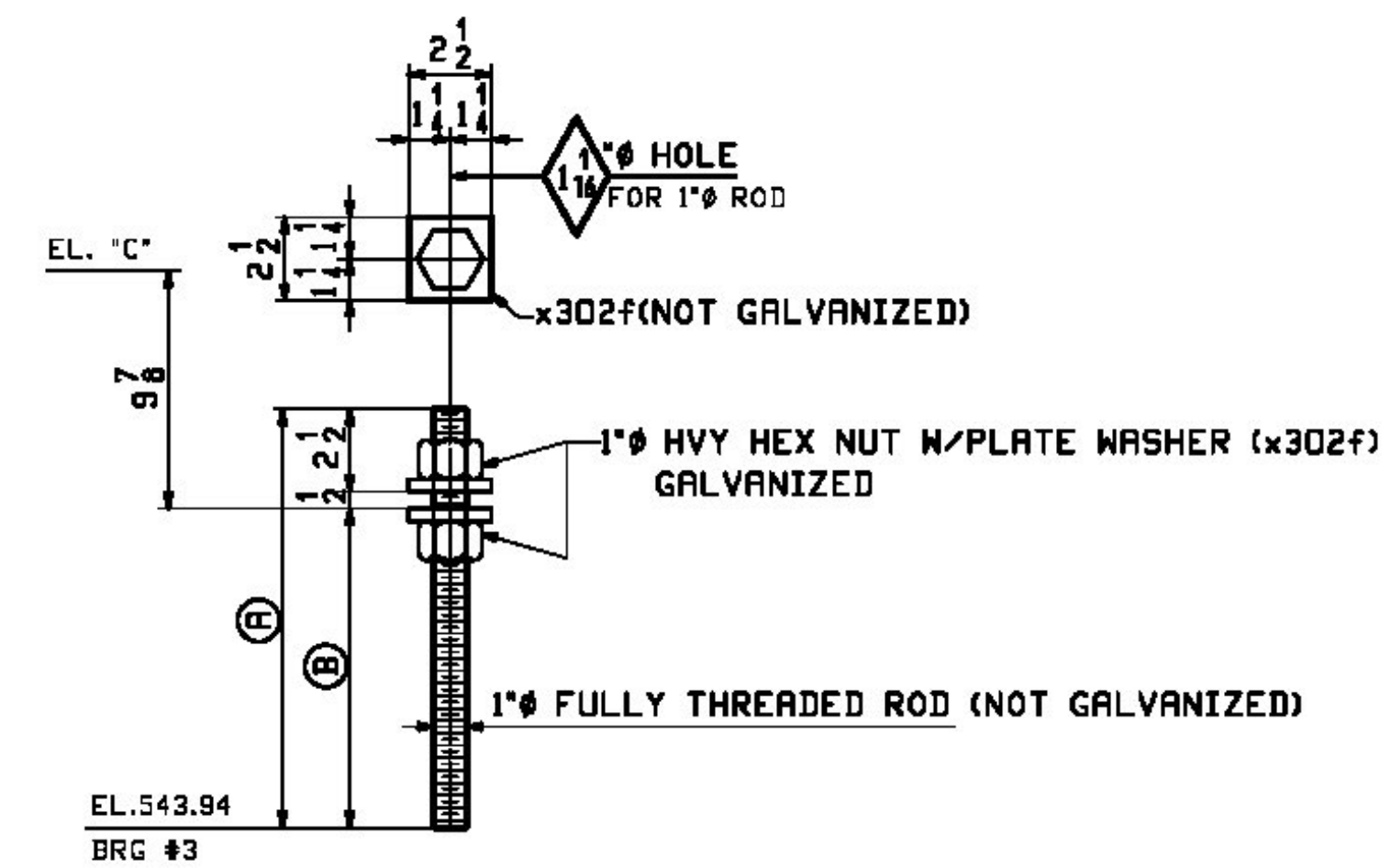
(5) BRACKETS REQUIRED



SECTION B

4 ~ BRACKET SUB-ASSEMBLIES ~ X302M2

(5) BRACKETS REQUIRED



THREADED ROD SUB-ASSEMBLIES - MARK "A"
AT BRACKETS

MARK "A"	QTY	(A)	(B)	EL "C"	
X302M3	4	1'-0 3/4	9 3/4	545.574	AT B2 (BRG 3)
X302M4	4	1'-2 5/8	11 5/8	545.734	AT B3 (BRG 3)
X302M5	4	1'-2 5/16	11 5/16	545.704	AT B4 (BRG 3)
X302M6	4	1'-0 3/8	9 3/8	545.543	AT B5 (BRG 3)
X302M7	16	7 3/4	4 3/4	N.A.	TYP @ BRG 2

Need 8 more THEREADED ROD SUB-ASSEMBLIES, for the added bracket location at BEAM #1

BILL OF MATERIAL					JOB NO.	DRAWING NO.	REV.	
					498	X302		
PAGE LINE	MARK	QTY	MARK	MATERIAL	LENGTH FT INCHES	REMARKS	WT	PROCUREMENT NOTES
	X302M1	4		BRACKET SUB-ASS'Y			20	
302	B	4	X302a	PL 1/2x8	0 10			
302	C	4	X302b	PL 1/2x6	0 10			
	X302M2	4		BRACKET SUB-ASS'Y			28	
302	D	4	X302c	PL 1/2x8	1 2 1/2			
302	E	4	X302d	PL 1/2x6	1 2 1/2			
	X302M3	4		THREADED ROD SUB ASS'Y			5	
302	J	4		1 # ROD	1 0 3/4	BRG 3		
302	L	8		1 # HHN		BRG 3		
302	M	8	X302F	PL 3/8x2 1/2	0 2 1/2	(NOT GALV)		
	X302M4	4		THREADED ROD SUB ASS'Y			5	
302	H	4		1 # ROD	1 2 5/8	BRG 3		
302	L	8		1 # HHN		BRG 3		
302	M	8	X302F	PL 3/8x2 1/2	0 2 1/2	(NOT GALV)		
	X302M5	4		THREADED ROD SUB ASS'Y			5	
302	H	4		1 # ROD	1 2 5/8	BRG 3		
302	L	8		1 # HHN		BRG 3		
302	M	8	X302F	PL 3/8x2 1/2	0 2 1/2	(NOT GALV)		
	X302M6	4		THREADED ROD SUB ASS'Y			5	
302	J	4		1 # ROD	1 0 3/4	BRG 3		
302	L	8		1 # HHN		BRG 3		
302	M	8	X302F	PL 3/8x2 1/2	0 2 1/2	(NOT GALV)		
	X302M7	16		THREADED ROD SUB ASS'Y			5	
302	K	16		1 # ROD	1 0 3/4	BRG 3		
302	L	32		1 # HHN		BRG 3		
302	M	32	X302F	PL 3/8x2 1/2	0 2 1/2	(NOT GALV)		

(8) more
THREADED
ROD SUB
ASS'Y needed.

NOTE:
FOR GENERAL NOTES SEE DRAWING GNI.

REV.	DATE	REMARKS	DWN	CHK	APVL	SHOP
0						
MATERIAL:		SURFACE PREP. & PAINT:		HOLES:		SHOP BOLTS:
M270-50 (UN)		HOT-DIP GALV., U.N.		15 16 (UN)		7 8 (UN)
DESCRIPTION: EXP. JOINT SUB-ASSEMBLIES						
CASCO BAY STEEL STRUCTURES, INC. 1 WALLACE AVE. PHONE (207) 780-6722 SOUTH PORTLAND, ME 04106 FAX. (207) 780-6726						
STRUCTURE: VT RTE 107 OVER WHITE RIVER					DRAWN:	DATE:
					JTB	12/12
					CHKD:	DATE:
					PCP	12/30
LOCATION: BETHEL, VT.					JOB NO.	DWG NO.
PROJ NO. BRP 022-1(14)					498	X302
CUSTOMER: BECK & BELLUCCI						REV. A

Vermont Agency of Transportation
RECEIVED
CK'D BY M.C.L. OK'D BY S.S.S.
January 10 2012
RESUBMIT APPROVED AS NOTED ✓
BY J. LACROIX DATE 01-12-2012