

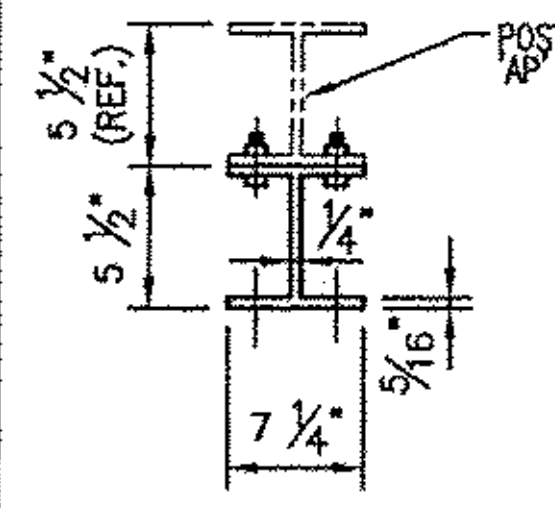
RECEIVED
 OK'D BY *WBP* OK'D BY *SSS*

OCT 24 2011

RESUBMIT _____ APPROVED
 BY _____ DATE *11/1/2011*

OFFSET BLOCK DETAIL CHART FOR NE (CURB) & SW (SDWK) APPROACHES

OFFSET BLOCK MTG. DIMENSIONS									BEV
POST No.	QTY.	A	B	C	D	E	F (O.C.)	LGTH	X
AP1	1	1 15/16"	1'-1 3/8"	2'-2"	3/4"	1 3/16"	2'-4 5/8"	2'-5"	1 3/16
AP2	1	1 15/16"	11 11/16"	1'-11 11/16"	3/4"	1 3/16"	2'-2 5/16"	2'-2 11/16"	1 3/16
AP3	1	1 15/16"	10"	1'-9 3/8"	3/4"	1 3/16"	2'-0"	2'-0 3/8"	1 3/16
AP4	1	1 15/16"	8 5/16"	1'-7 1/16"	3/4"	1 3/16"	1'-9 11/16"	1'-10 1/16"	1 3/16
AP15	1	1 3/4"	1'-1 13/16"	2'-7"	5/16"	1 3/8"	2'-9 7/8"	2'-10"	1/2
AP16	1	1 3/4"	1'-1 1/4"	2'-5 1/8"	5/16"	1 3/8"	2'-7 15/16"	2'-8 1/8"	1/2
AP17	1	1 3/4"	1'-0 5/8"	2'-3 3/16"	5/16"	1 3/8"	2'-6 1/16"	2'-6 3/16"	1/2
AP18	1	1 3/4"	1'-0"	2'-1 15/16"	5/16"	1 3/8"	2'-4 1/8"	2'-4 5/16"	1/2



TYP. SECT. POST & OFFSET BLOCK

OFFSET BLOCK ~ RAIL MTG. DIMENSIONS

POST No.	OFFSET BLOCK	H	J	K	L	M	N
AP1	OB1	1 1/16"	1'-0 3/8"	2'-1 1/16"	13/16"	11 15/16"	2'-0 1/2"
AP2	OB2	1 1/16"	10 11/16"	1'-10 3/4"	13/16"	10 1/4"	1'-10 3/16"
AP3	OB3	1 1/16"	9"	1'-8 7/16"	13/16"	8 9/16"	1'-7 7/8"
AP4	OB4	1 1/16"	7 5/16"	1'-6 1/8"	13/16"	6 7/8"	1'-5 9/16"
AP15	OB15	1"	1'-0 15/16"	2'-6 3/16"	7/8"	1'-0 3/4"	2'-5 13/16"
AP16	OB16	1"	1'-0 5/16"	2'-4 5/16"	7/8"	1'-0 1/8"	2'-3 15/16"
AP17	OB17	1"	11 11/16"	2'-2 3/8"	7/8"	11 9/16"	2'-2 1/16"
AP18	OB18	1"	11 1/8"	2'-0 1/2"	7/8"	10 15/16"	2'-0 1/8"

NOTE:

2 CLAMPING BARS CB-01-H (#28596) PER POSTS AP1-AP4, AP15-AP18
 4 CLAMPING BARS CB-03-A (#19447) PER POSTS AP1-AP4, AP15-AP18 w/ 1/2"-13 UNC S.S. BOLT x 1" LG. 'FB1', 1 1/16" O.D. x 17/32" I.D. x 3/32" THK. ALUM WASHER 'FW1' (#15280 & # 19404) (12 PER POST)

OFFSET BLOCK DETAIL CHART FOR NE (CURB) & SW (SDWK) APPROACHES

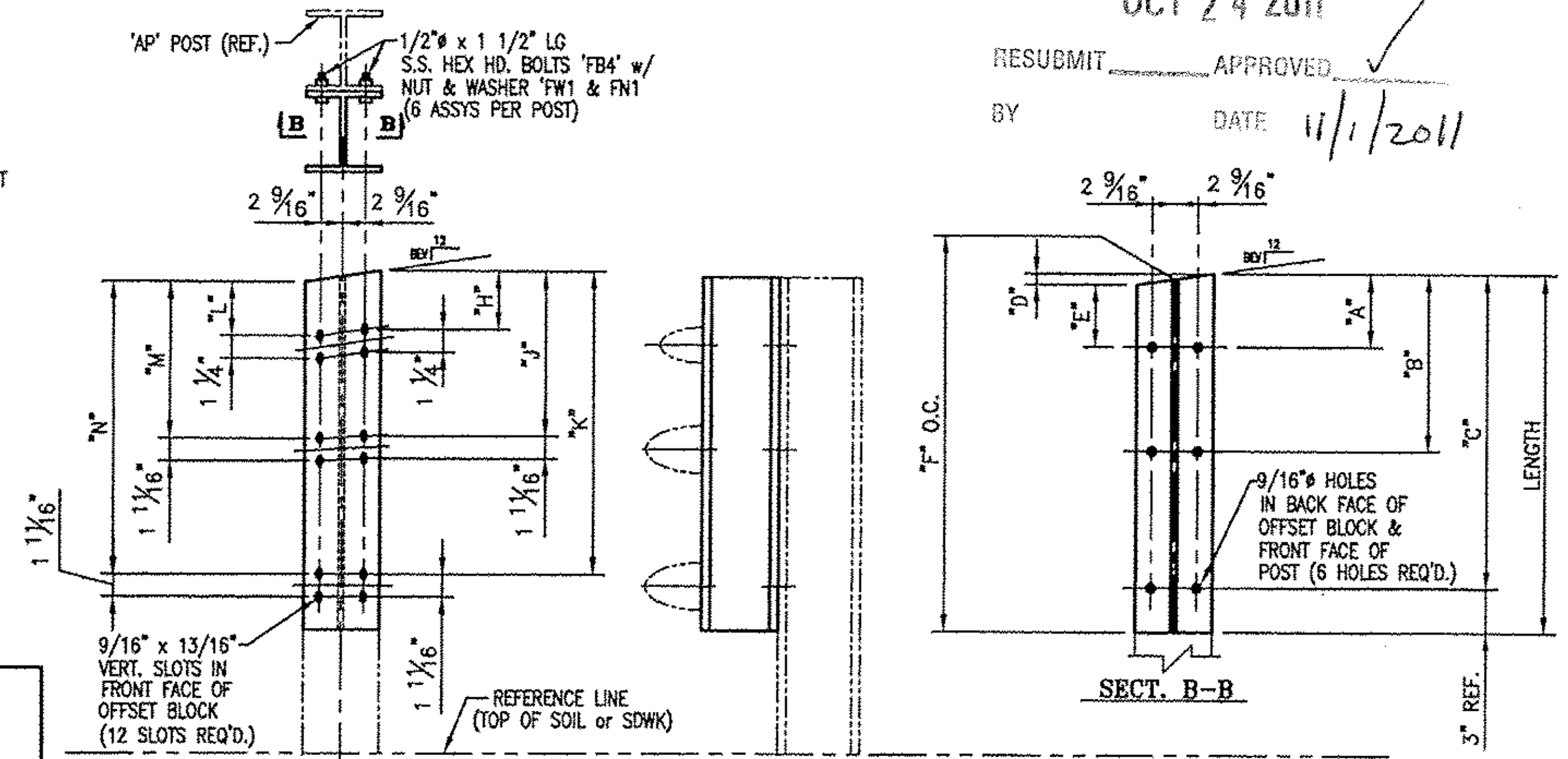
OFFSET BLOCK MTG. DIMENSIONS								BEV
POST No.	QTY.	A	B	LGTH	D	E	F (O.C.)	X
AP5	1	2 3/16"	1'-0 1/8"	1'-3 1/8"	3/8"	1 13/16"	1'-2 15/16"	11/16
AP6	1	2 3/16"	11 5/16"	1'-2 5/16"	3/8"	1 13/16"	1'-2 1/8"	11/16
AP7	1	2 3/16"	10 7/16"	1'-1 7/16"	3/8"	1 13/16"	1'-1 1/4"	11/16
AP19	1	2 1/8"	1'-1 5/8"	1'-4 5/8"	3/16"	1 7/8"	1'-4 9/16"	5/16
AP20	1	2 1/8"	11 15/16"	1'-2 15/16"	3/16"	1 7/8"	1'-2 13/16"	5/16
AP21	1	2 1/8"	10 3/16"	1'-1 3/16"	3/16"	1 7/8"	1'-1 1/16"	5/16

OFFSET BLOCK ~ RAIL MTG. DIMENSIONS

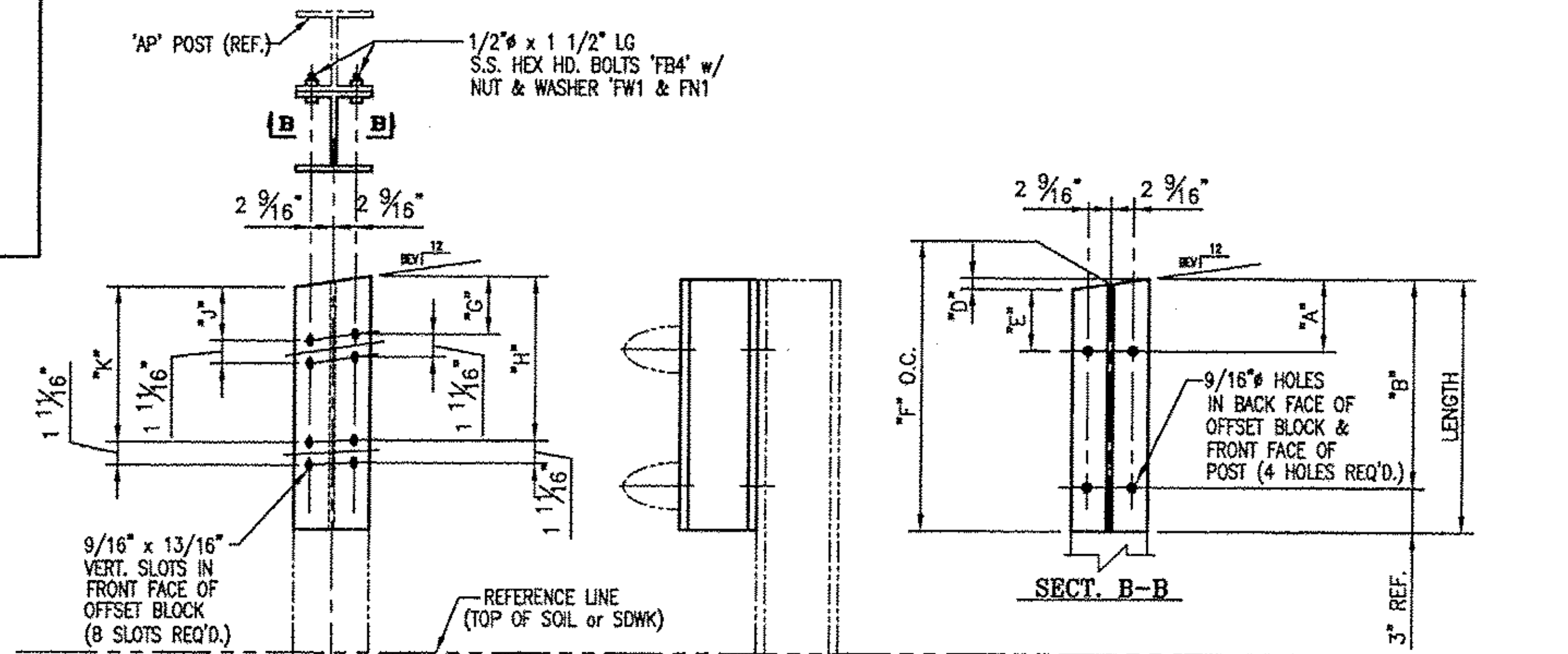
POST No.	OFFSET BLOCK	G	H	J	K
AP5	OB5	1 3/16"	11 3/16"	1 1/8"	11"
AP6	OB6	1 3/16"	10 3/8"	1 1/8"	10 1/8"
AP7	OB7	1 3/16"	9 1/2"	1 1/8"	9 5/16"
AP19	OB19	1 3/16"	1'-0 13/16"	1 1/8"	1'-0 9/16"
AP20	OB20	1 3/16"	11 1/8"	1 1/8"	10 7/8"
AP21	OB21	1 3/16"	9 3/8"	1 1/8"	9 1/8"

NOTE:

4 CLAMPING BARS CB-03-A (#19447) PER POSTS AP5-AP7, AP19-AP21 w/ 1/2"-13 UNC S.S. BOLT x 1" LG. 'FB1', 1 1/16" O.D. x 17/32" I.D. x 3/32" THK. ALUM WASHER 'FW1' (#15280 & # 19404) (8 PER POST)



FRT ELEV VIEW ~ OB1-OB4, OB15-OB18



FRT ELEV VIEW ~ OB5-OB7, OB19-OB21

BRIDGE No. 15
 PROJECT No. BRF 022-1 (14) ITEM No. 621.74

LB Foster
 Fabricated Bridge Products
 L.B. FOSTER COMPANY
 1016 GREENTREE RD.
 PITTSBURGH, PA 15220

FOR: F. R. LAFAYETTE, INC.
 VERMONT AGENCY OF TRANSPORTATION
 TOWN OF BETHEL, WINDSOR COUNTY, VT
 3-LINE ALUMINUM APPROACH RAIL FOR VT ROUTE 7
 (MINOR ARTERIAL) - APPROACH OFFSET BLOCK DETAILS

MADE CMS DATE 09/15/11 JOB NO. ARO700

CHECKED DATE 10/14/11 DRAWING LB19

REV.	DESCRIPTION	BY	DATE