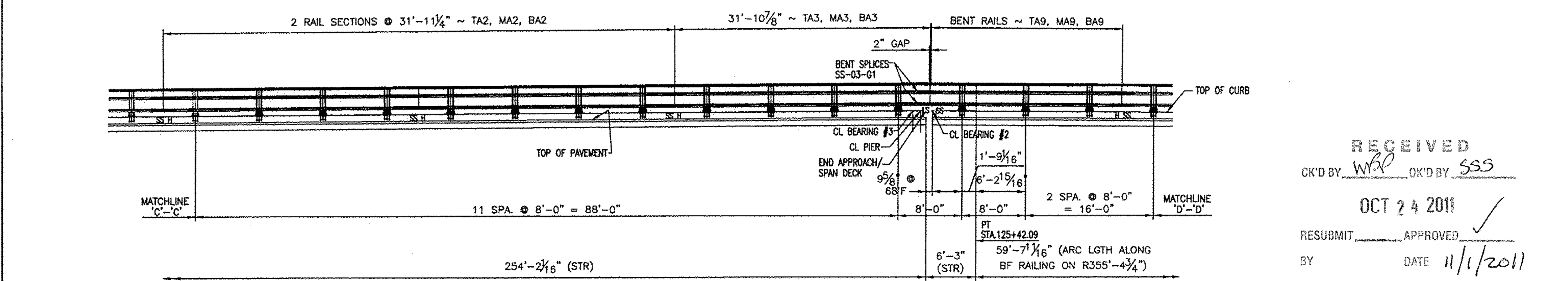
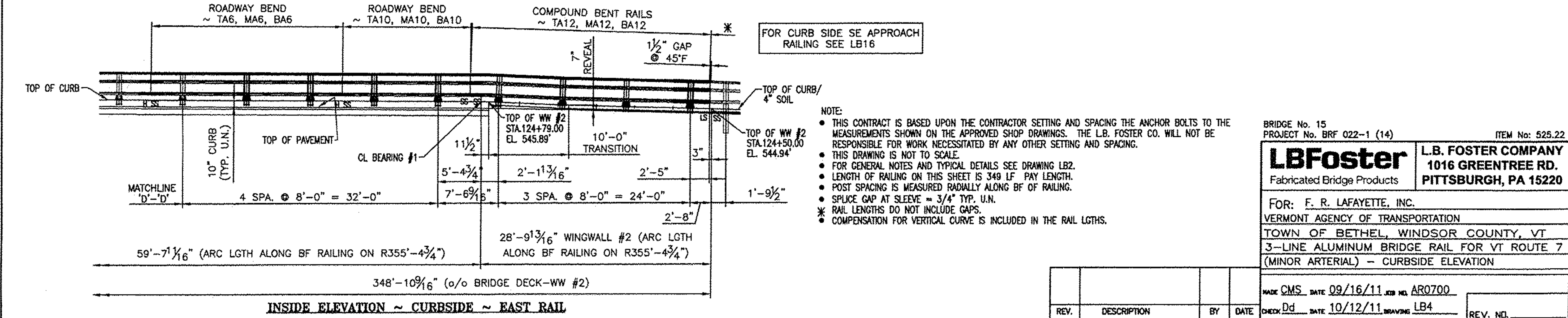


H = HOLE SIDE
 SS = SHORT SLOTTED SIDE
 LS = LONG SLOTTED SIDE



RECEIVED
 CK'D BY *WXP* OK'D BY *SSS*
 OCT 24 2011
 RESUBMIT _____ APPROVED
 BY _____ DATE 11/1/2011



FOR CURB SIDE SE APPROACH
 RAILING SEE LB16

NOTE:
 • THIS CONTRACT IS BASED UPON THE CONTRACTOR SETTING AND SPACING THE ANCHOR BOLTS TO THE MEASUREMENTS SHOWN ON THE APPROVED SHOP DRAWINGS. THE L.B. FOSTER CO. WILL NOT BE RESPONSIBLE FOR WORK NECESSITATED BY ANY OTHER SETTING AND SPACING.
 • THIS DRAWING IS NOT TO SCALE.
 • FOR GENERAL NOTES AND TYPICAL DETAILS SEE DRAWING LB2.
 • LENGTH OF RAILING ON THIS SHEET IS 349 LF PAY LENGTH.
 • POST SPACING IS MEASURED RADIALLY ALONG BF OF RAILING.
 • SPLICE GAP AT SLEEVE = 3/4" TYP. U.N.
 • RAIL LENGTHS DO NOT INCLUDE GAPS.
 • COMPENSATION FOR VERTICAL CURVE IS INCLUDED IN THE RAIL LGTHS.

BRIDGE No. 15
 PROJECT No. BRF 022-1 (14)
 ITEM No. 525.22

LB Foster L.B. FOSTER COMPANY
 Fabricated Bridge Products 1016 GREENTREE RD.
 PITTSBURGH, PA 15220

FOR: F. R. LAFAYETTE, INC.
 VERMONT AGENCY OF TRANSPORTATION
 TOWN OF BETHEL, WINDSOR COUNTY, VT
 3-LINE ALUMINUM BRIDGE RAIL FOR VT ROUTE 7
 (MINOR ARTERIAL) - CURBSIDE ELEVATION

MADE CMS DATE 09/16/11 JOB NO. ARO700
 CHECK Dd DATE 10/12/11 DRAWING LB4
 REV. DESCRIPTION BY DATE