

**GENERAL NOTES**

ALL MATERIAL AND WORKMANSHIP SHALL BE IN ACCORDANCE WITH VERMONT AGENCY OF TRANSPORTATION STANDARD SPECIFICATIONS FOR CONSTRUCTION DATED 2006 AND ITS LATEST REVISIONS.

DESCRIPTION	ASTM	ALLOY/GR.	REMARKS
RAILS, POSTS, BASES, SPLICES, CLAMP BARS, PINS, & BALUSTER FRAMES	B221	6061-T6 OR 6351-T5	MIN. YIELD STRENGTH $F_y = 35,000$ psi.
BALUSTERS	B221	6061 OR 6351	T4 - USED FOR SUPERIOR EXPANDING QUALITIES
RVETS	B316	6061-T6	BUTTON HD., COLD DRWN, BUTTON HD., COLD DRWN.
SET SCREWS FOR BALUSTERS	FB80	TYPE 303	
STAINLESS STEEL BOLTS	A193	GRADE B8	
ANCHOR BOLTS	A449		GALV. A153
STEEL HEX. NUTS	A563	GRADE DH	GALV. A153
STEEL WASHERS	F436		GALV. A153
ANCHOR PLATES	A569		COMMERCIAL QUALITY (PLAIN)
ALUMINUM WASHERS	B209	2024-T3/T4	ALCLAD
PREFORMED PADS			SECTION 731.01 OR 731.02
ELECTRODES FOR WELDING	AWS A5.10	ER5356	

POSTS TO BE NORMAL TO GRADE AND RAILS SHALL BE PARALLEL TO GRADE. RAILS TO BE ATTACHED TO A MINIMUM OF THREE POSTS WHEN POSSIBLE.

ALL RAILS AND WELDS TO BE FREE FROM ALL BURRS AND ROUGH EDGES. ENDS OF TUBE SECTIONS SHALL BE SAWED OR MILLED. GRIND ALL CUT EDGES SMOOTH.

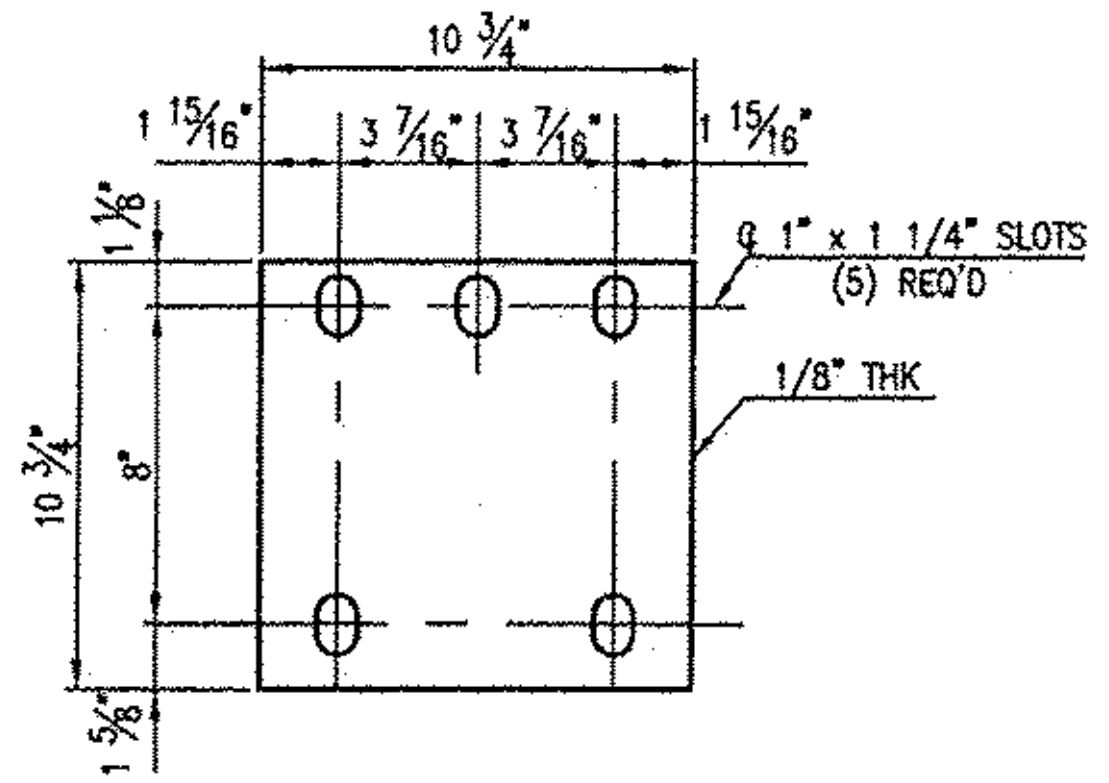
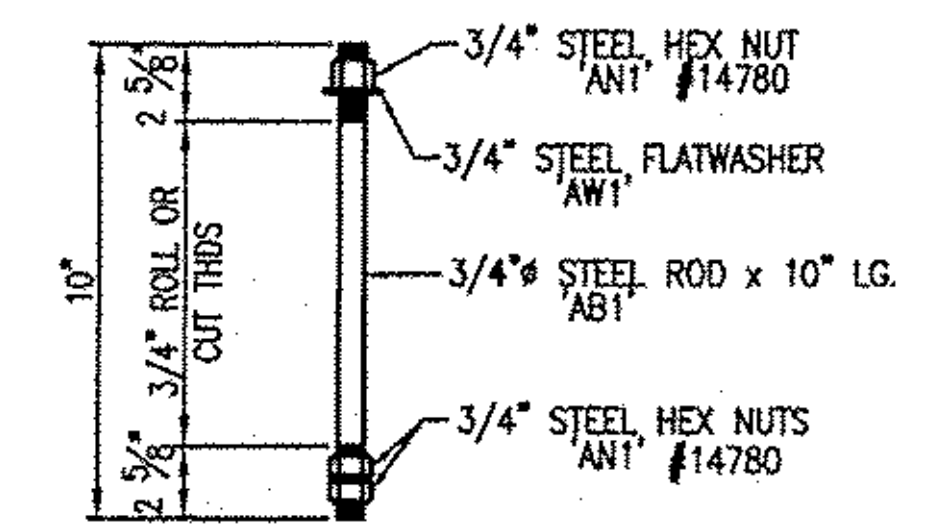
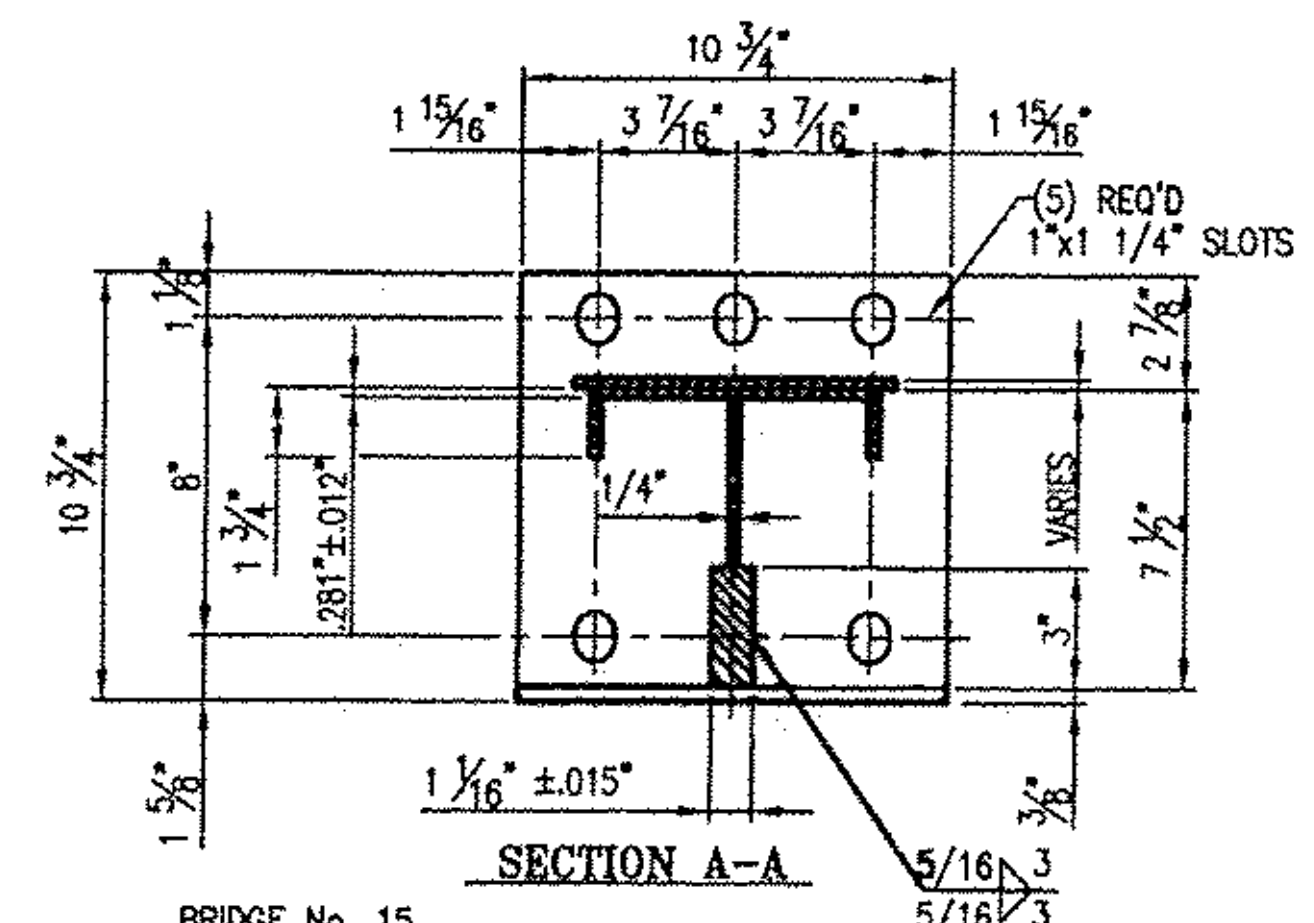
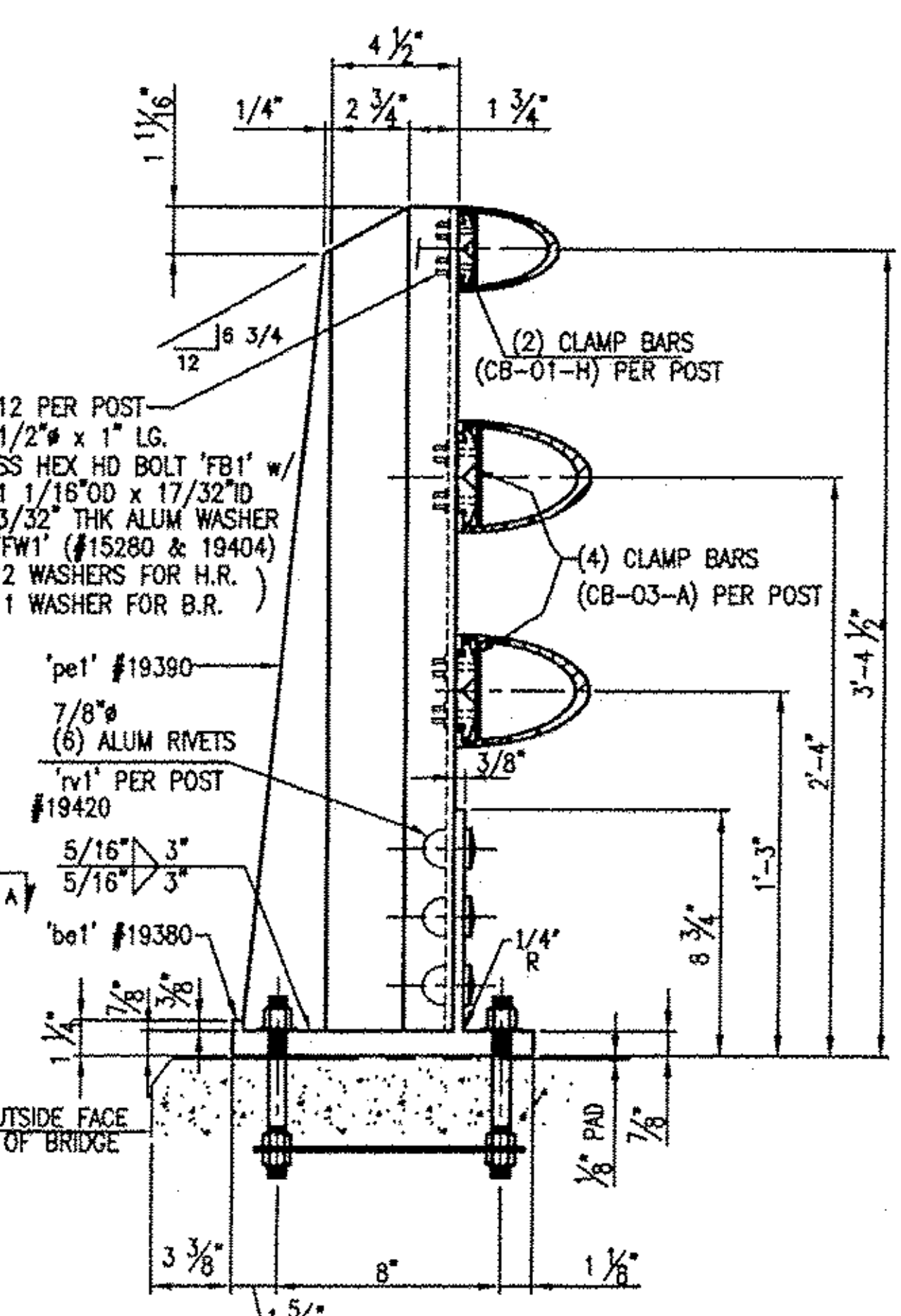
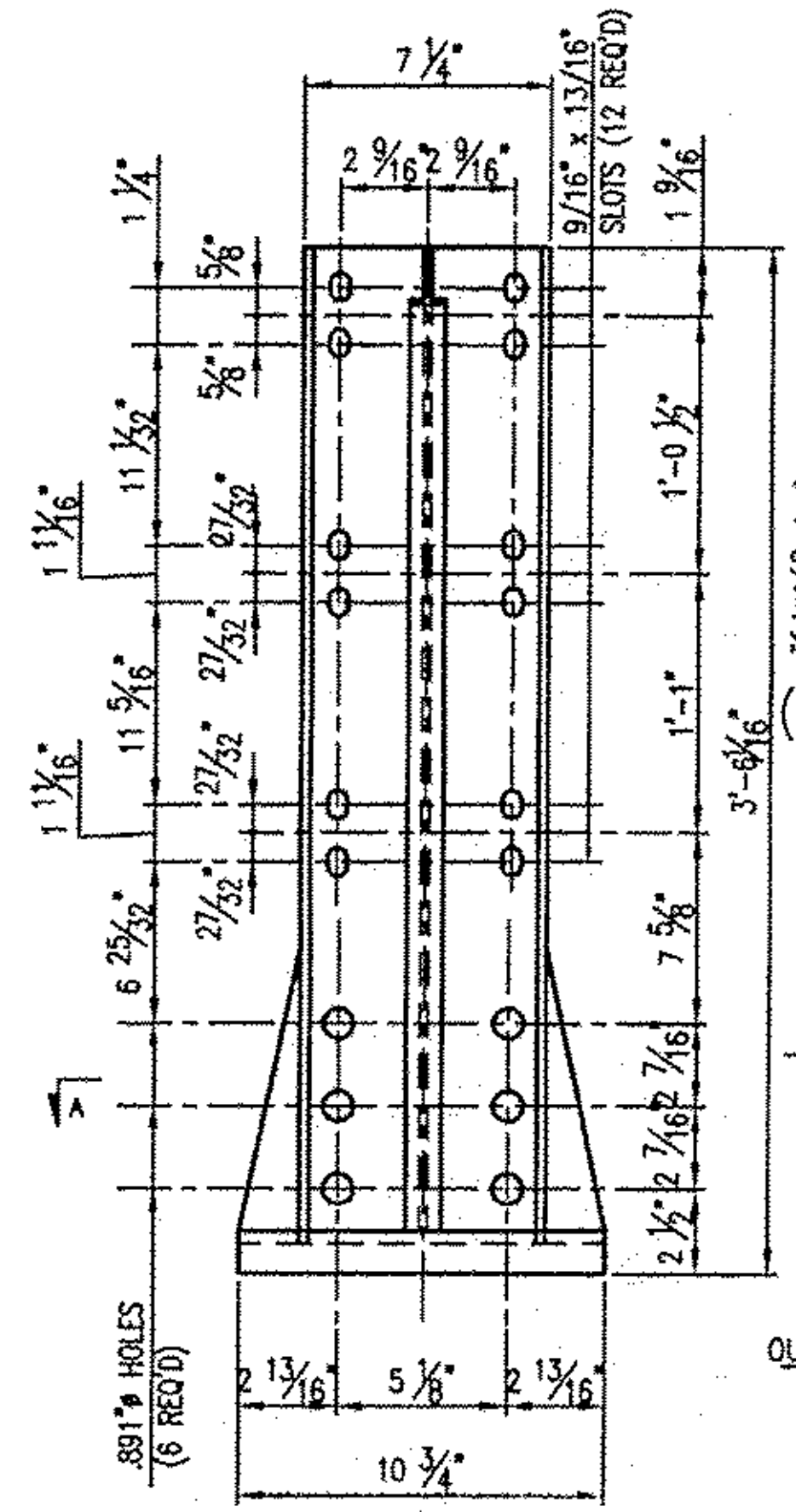
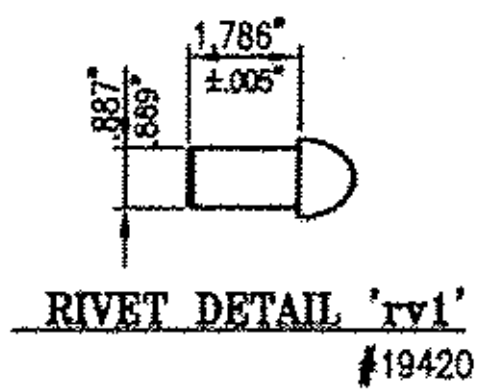
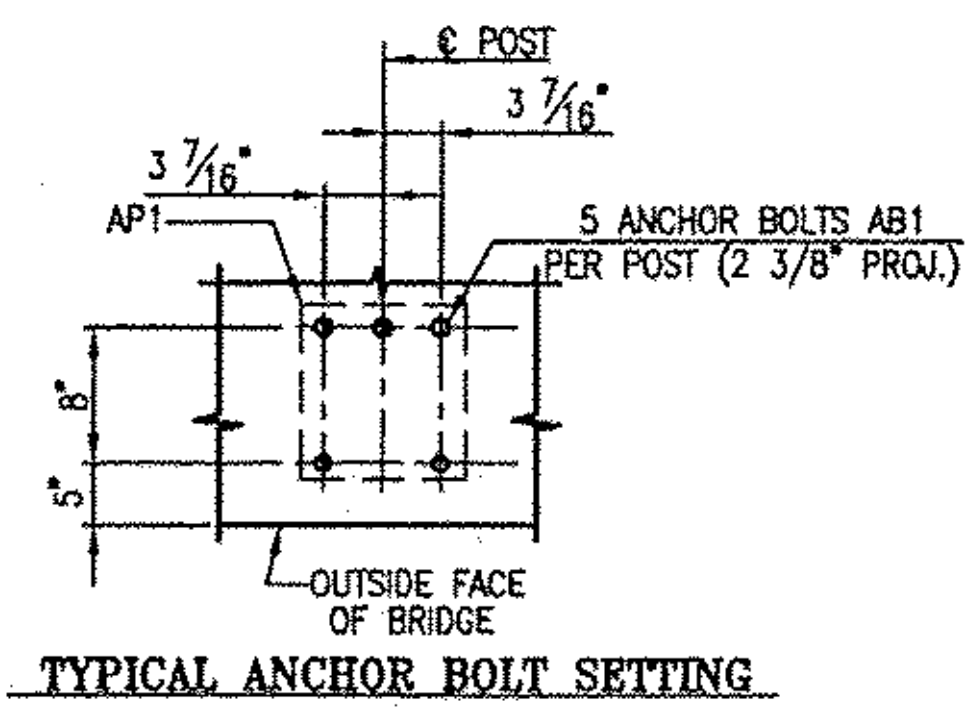
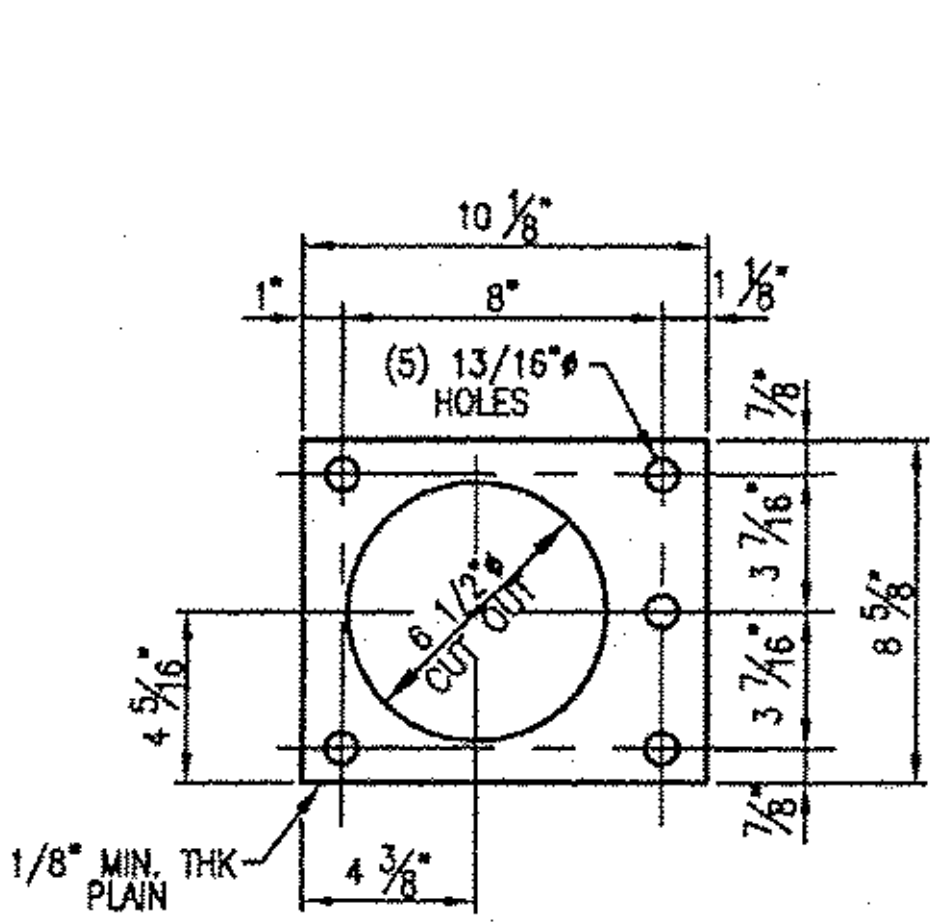
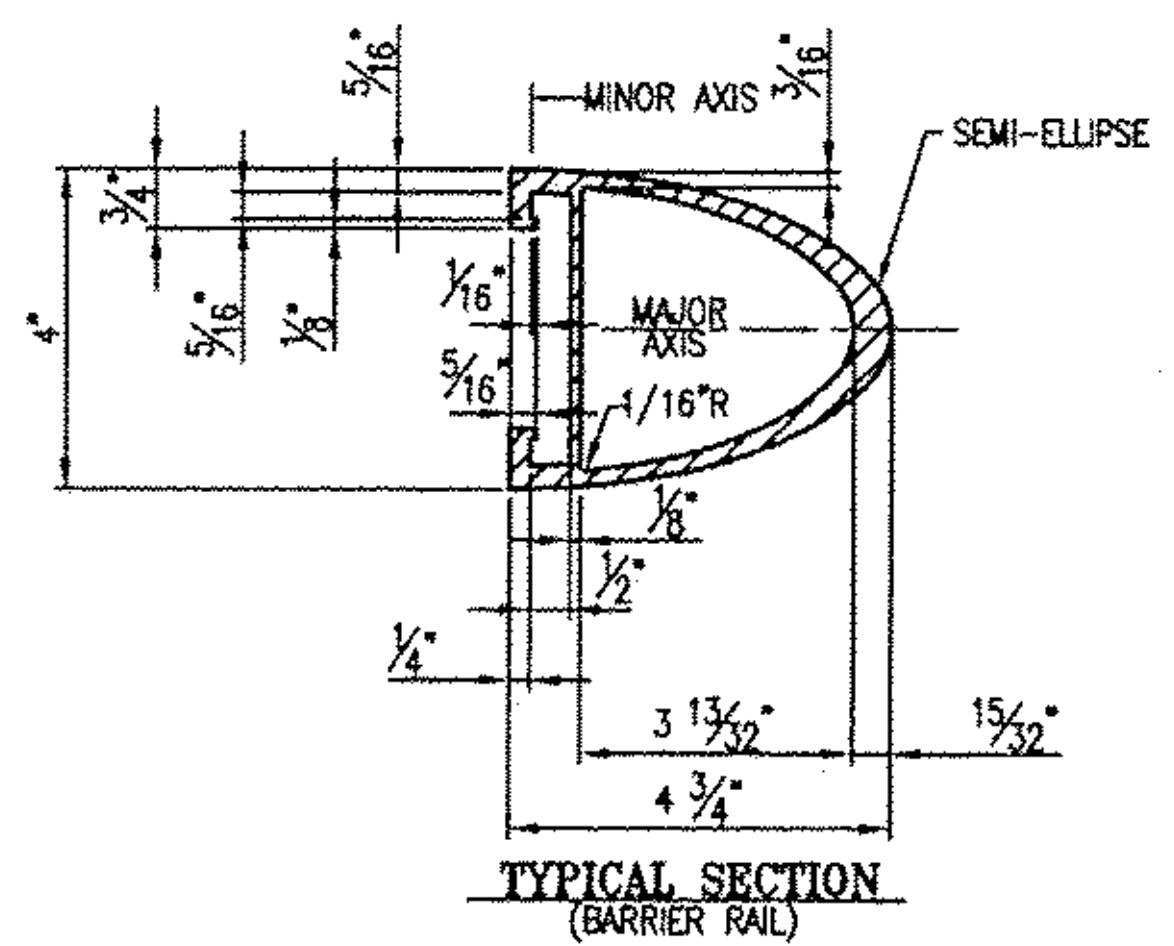
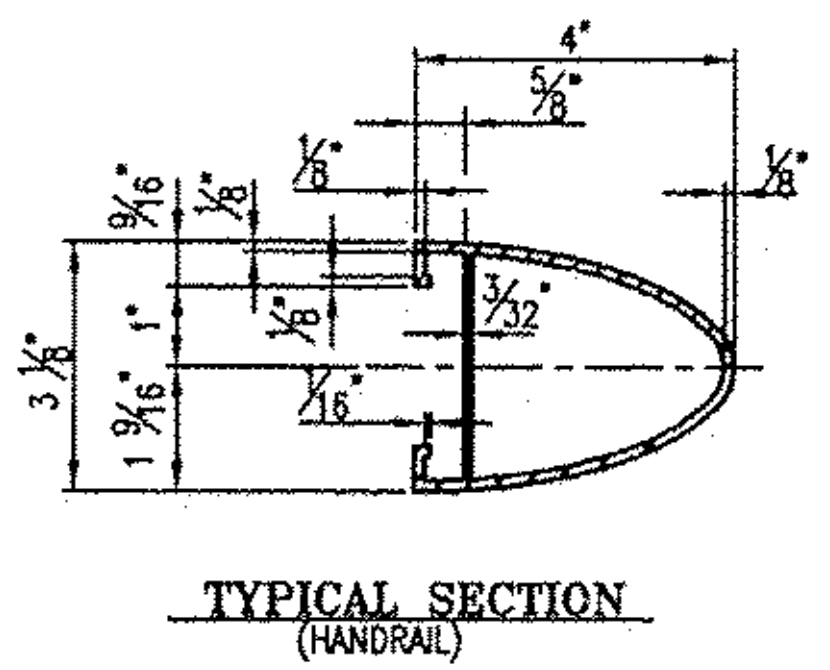
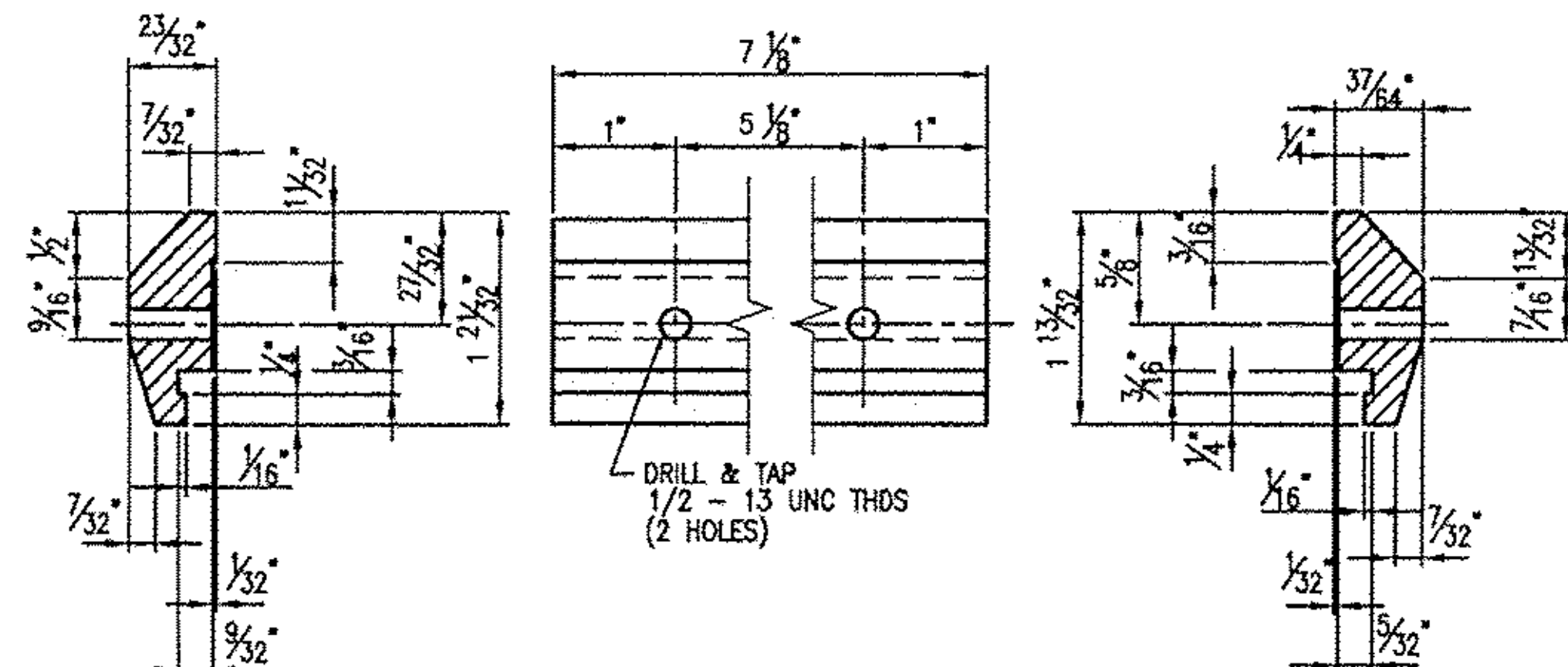
ALL THREADS TO BE UNC CLASS 2A/2B.

ALL EXTRUSION TOLERANCES NOT SHOWN SHALL BE IN ACCORDANCE WITH ASTM B221.

IF CUT THREADS ARE USED, BOLT DIAMETER SHALL NOT BE LESS THAN NOMINAL DIAMETER. IF ROLLED THREADS ARE USED, BOLT DIAMETER SHALL NOT BE LESS THAN THE ROOT DIAMETER OF THREADS.

THE SPLICE BAR SHALL BE ATTACHED TO THE RAIL ELEMENT AS FOLLOWS: THE RAIL SPLICE AT THE BRIDGE EXPANSION JOINT SHALL BE FASTENED ON BOTH SIDES OF THE RAIL SPLICE USING THE PARTIALLY THREADED BOLTS, WITH THE WASHER FACED BOLT, TIGHTENED SECURELY TO THE END OF THREADS, AND LEAVING A 1/8" GAP. THIS ALLOWS EXPANSION ON BOTH SIDES OF THE JOINT.

ALL NUTS SHALL COMPLY WITH AMERICAN HEXAGON ANSI SPECIFICATIONS B18.2



RECEIVED  
CK'D BY *WBF* OK'D BY *SSS*  
OCT 24 2011  
RESUBMIT APPROVED  
BY DATE 11/1/2011

REV.	DESCRIPTION	BY	DATE

BRIDGE No. 15  
PROJECT No. BR 022-1 (14)  
ITEM No. 525.23

**LB Foster** L.B. FOSTER COMPANY  
Fabricated Bridge Products 1016 GREENTREE RD.  
PITTSBURGH, PA 15220

FOR: F. R. LAFAYETTE, INC.  
VERMONT AGENCY OF TRANSPORTATION  
TOWN OF BETHEL, WINDSOR COUNTY, VT  
3-LINE ALUMINUM BRIDGE RAIL FOR VT ROUTE 7  
(MINOR ARTERIAL)(SIDEWALK) - GENERAL NOTES & TYPICAL DETAILS

MADE CMS DATE 09/15/11 JOB NO. ARO700  
CHECKED DATE 10/12/11 DRAWING LB1