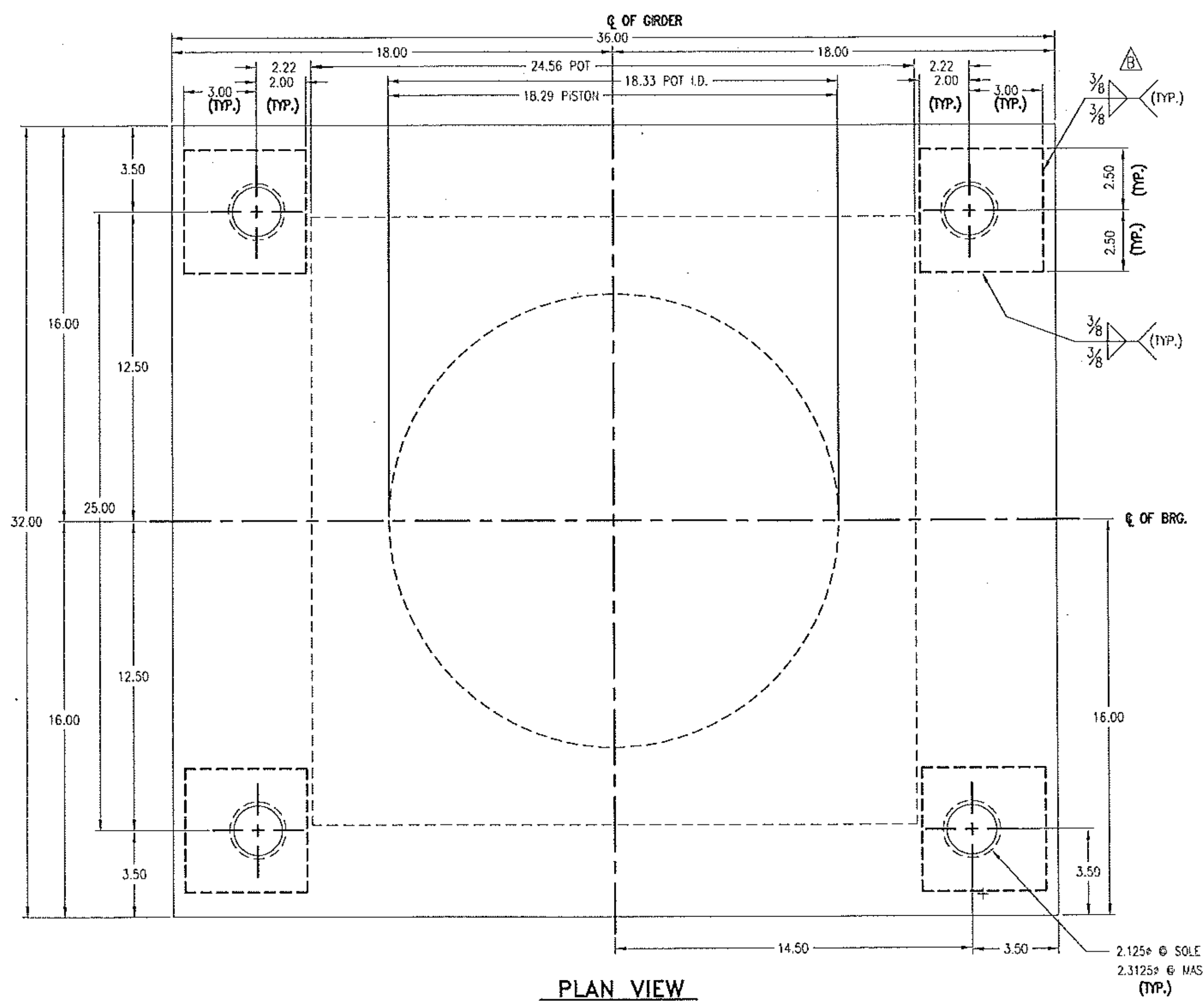
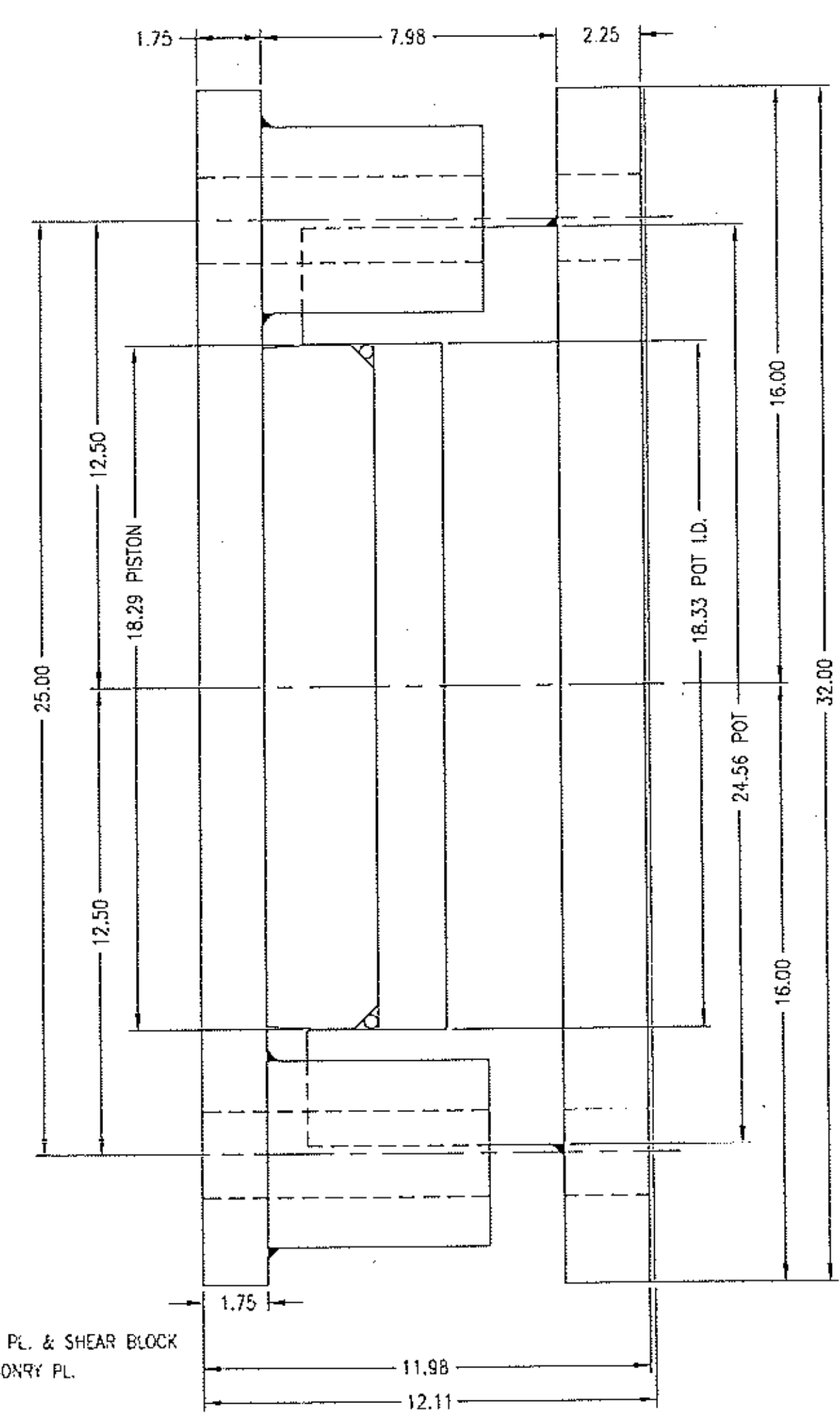


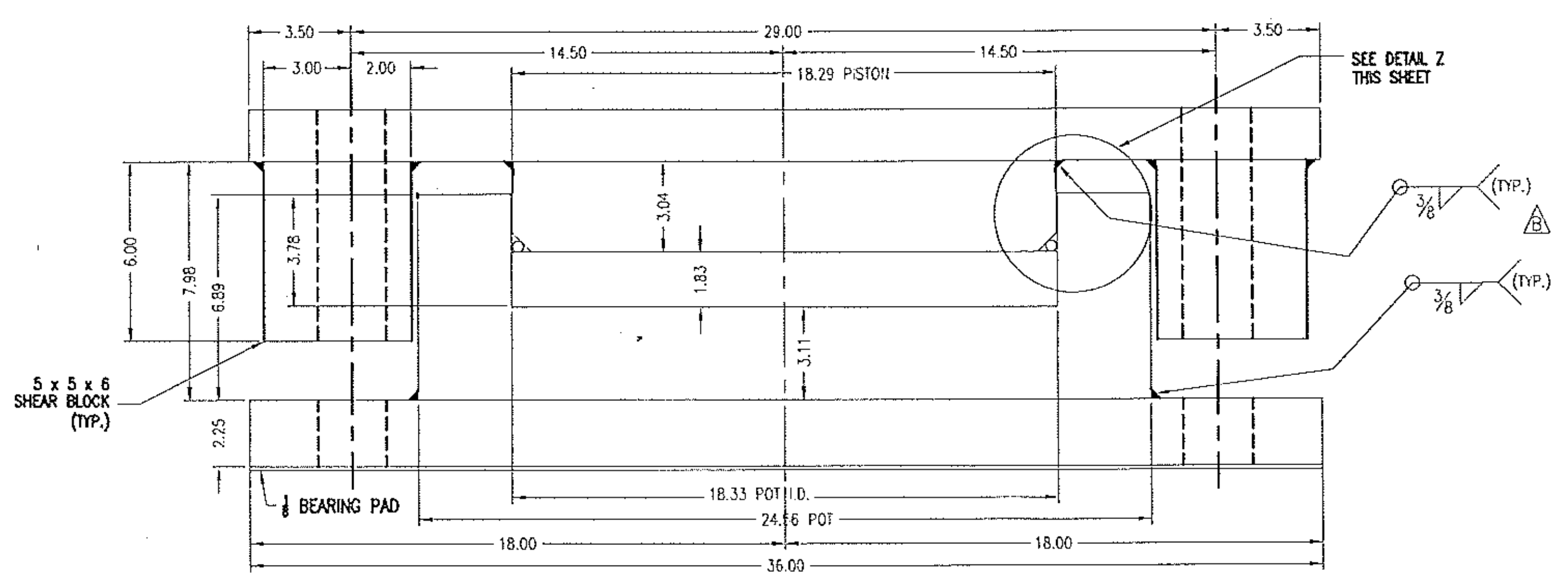
REVISIONS					
ZONE	REV	DESCRIPTION	DATE	REV. BY	APPROVED
-	A	AS PER ENGINEER & CHECKER'S MARKS	8/28/11	E.J.G.	R.F.
-	B	AS PER ENGINEER'S MARKS	10/6/11	E.J.G.	R.F.



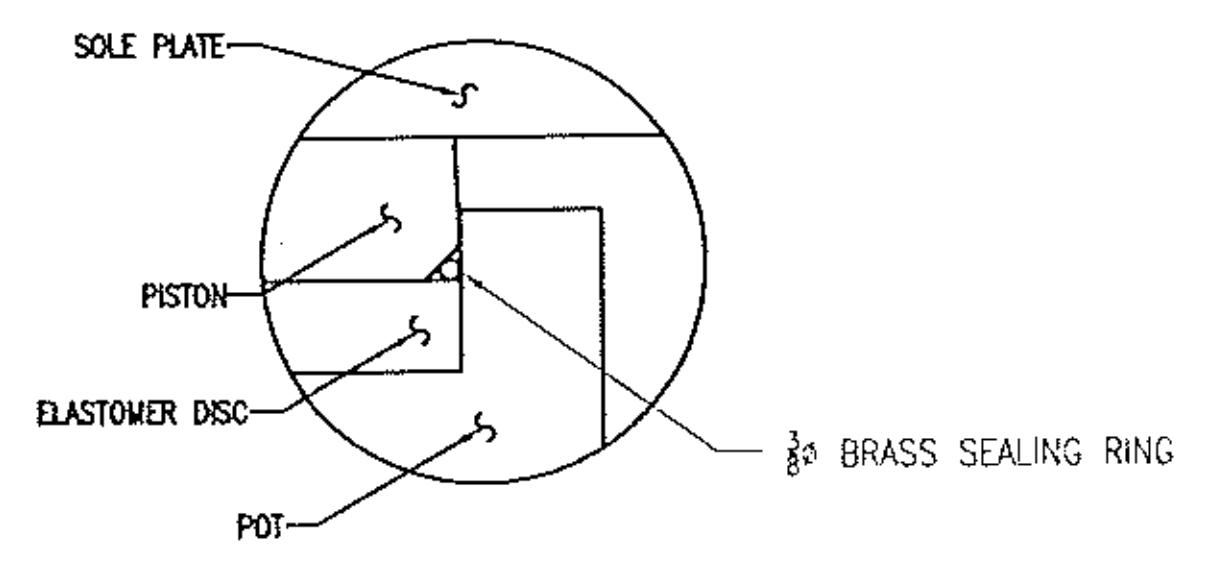
**PLAN VIEW**



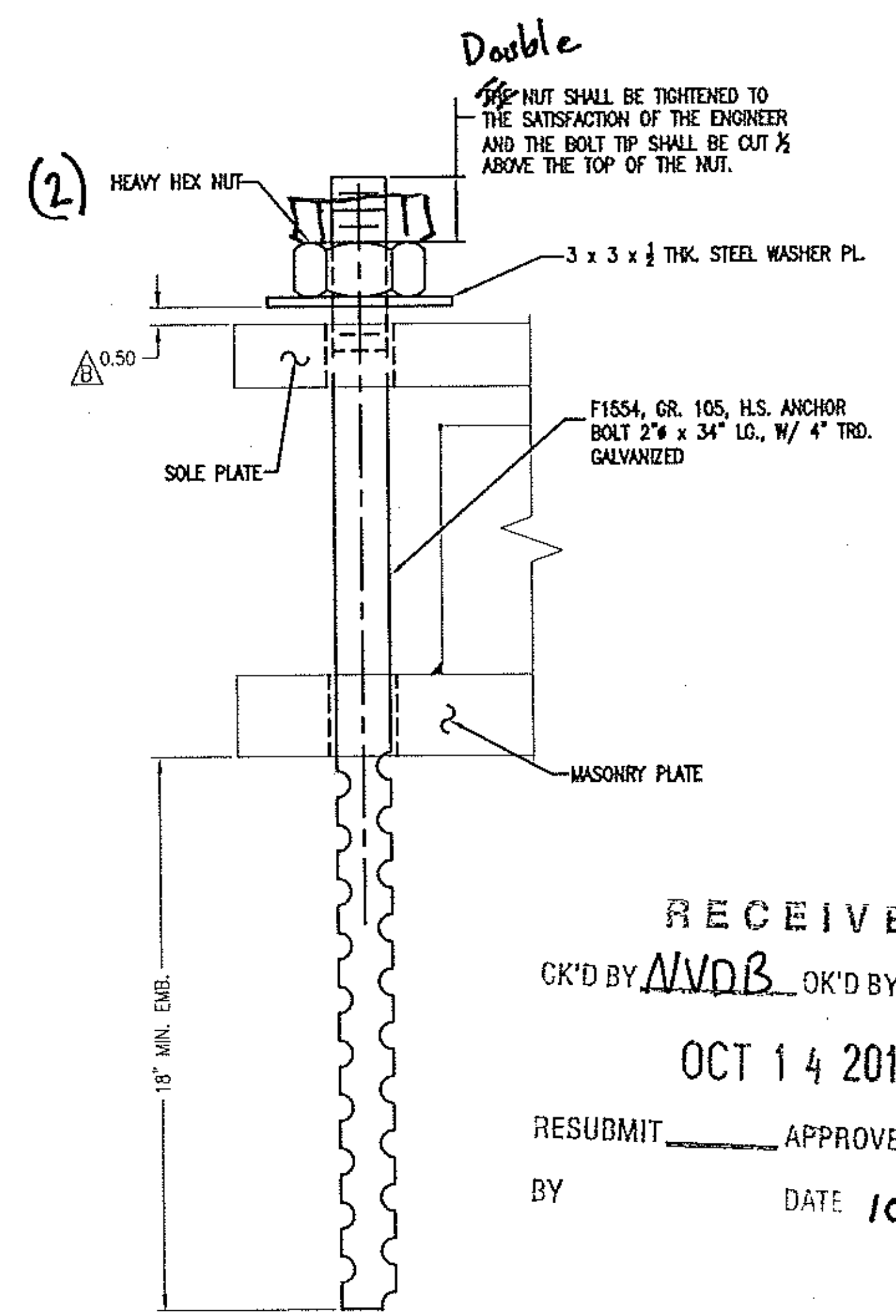
**SIDE VIEW**



**SPAN PIER FIXED BEARING (N1)**  
QTY. REQ'D = 1  
924 KIPS



**DETAIL Z**



**ANCHOR BOLT DETAIL**  
QTY. REQ'D = 4

RECEIVED  
CK'D BY NVDB OK'D BY SSS  
OCT 14 2011  
RESUBMIT \_\_\_\_\_ APPROVED AS Noted  
BY \_\_\_\_\_ DATE 10/18/11

VERMONT AGENCY OF TRANSPORTATION  
PROJECT NAME: BETHEL  
PROJECT NUMBER: BRF-022-1(14)

**AMSCOT**  
STRUCTURAL PRODUCTS CORP.

SCALE: N.T.S.	APPRV'D: R.F.	DRAWN BY: P.S.
DATE: 8/19/11		REV: B
FIXED TYPE HLMR POT BEARING		
FOR: BECK & BELLUCCI	SHEET NO 3 of 7	DWG NO: BB11A3RB