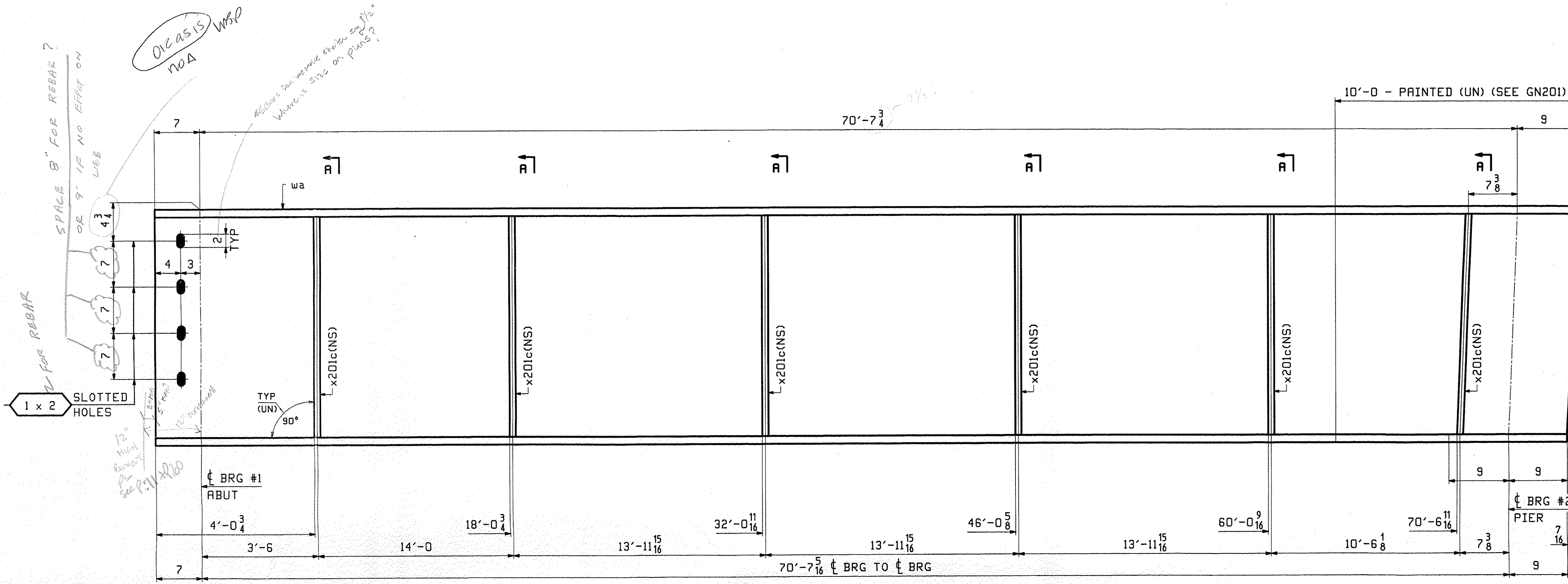


JOB NO.		DRAWING NO.		REV.						
498		201								
PAGE	LINE	MARK	QTY	MARK	MATERIAL	LENGTH		REMARKS	WT	PROCUREMENT NOTES
						FT	INCHES			
					STRINGER					10941
201	A		1	wa	W 36x150	71	11 3/4	M270-50W12		
202	C		6	x201c	PL 1/2 x 5	2	10	M270-50W		

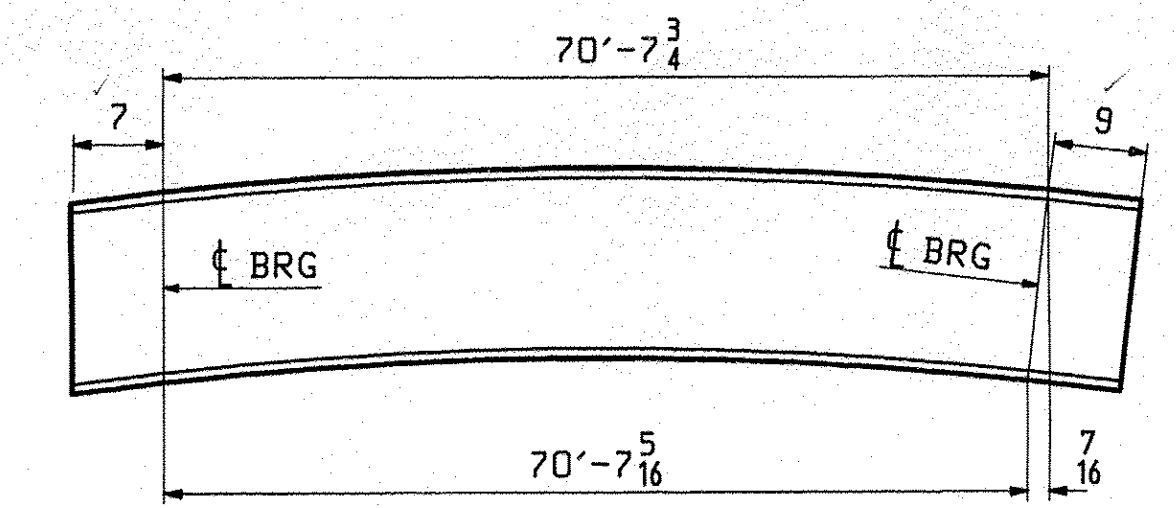


NOTE "B"  
SEE CAMBER DIAGRAM

**ONE - STRINGER - 201S1**

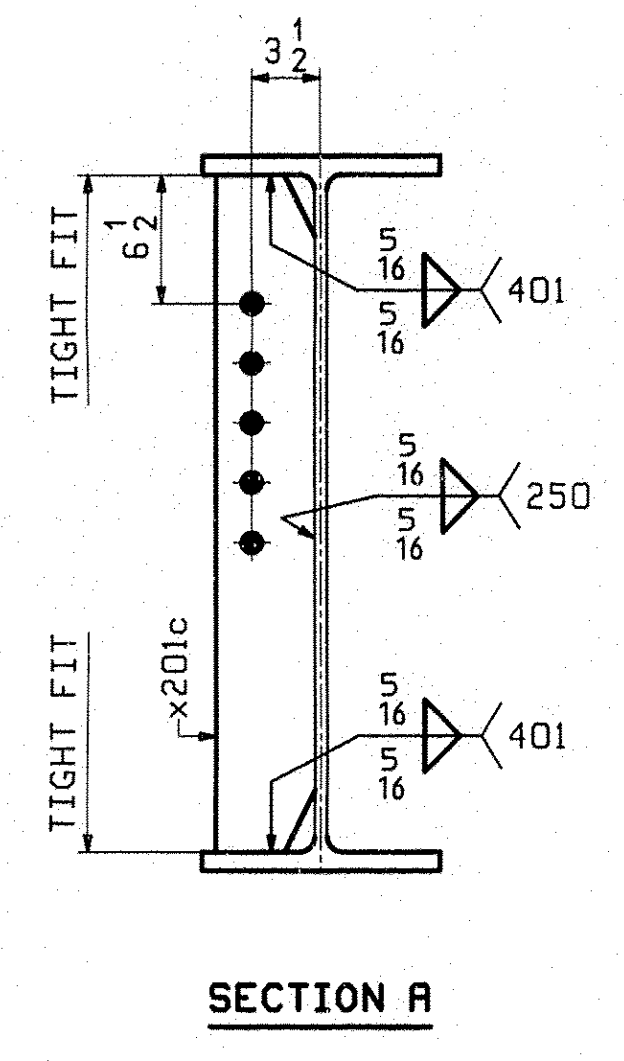
FOR STANDARD DETAILS SEE DRAWING X201.  
FOR CAMBER DIAGRAM SEE DRAWING C201.  
FOR GENERAL NOTES SEE DRAWING GN201.  
T2 DENOTES MATERIAL SUBJECT TO CHARPY V-NOTCH TESTING.

NOTE "B"  
NO PAINT AREA AT EDGES AND BOTTOM OF BOTTOM FLANGE.  
(FIELD WELDED SOLE PLATE).



ORIENTATION DIAGRAM FOR CAMBER SEE DWG C201

NOV 14 2011  
APPROVED BY: [Signature]  
DATE: 11/14/11



REV.	DATE	REMARKS	DWN	CHK	APVL	SHOP
0						
MATERIAL:		SURFACE PREP. & PAINT:		HOLES:		SHOP BOLTS:
M270-50W		SEE DWG GN201		15/16" Ø		NONE
DESCRIPTION: STRINGER - 201S1						
CASCO BAY STEEL STRUCTURES, INC. 1 WALLACE AVE. PHONE (207) 780-6722 SOUTH PORTLAND, ME 04106 FAX. (207) 780-6726						
STRUCTURE: VT 107 (RIVER STREET) over WHITE RIVER				DATE:	NOV 8 2011	
APPROACH SPAN				APV:	JTB 09/29	
County of WINDSOR				CHK:	PCP 10/4/11	
LOCATION: TOWN OF BETHEL, VERMONT				JOB NO.	498	
PROJ NO. BRF 022-1(14)				DWG NO.	201	
CUSTOMER: BECK & BELLUCCI				REV.	△	

JTB Nov 2011 2011 09/29/11 Rev 0