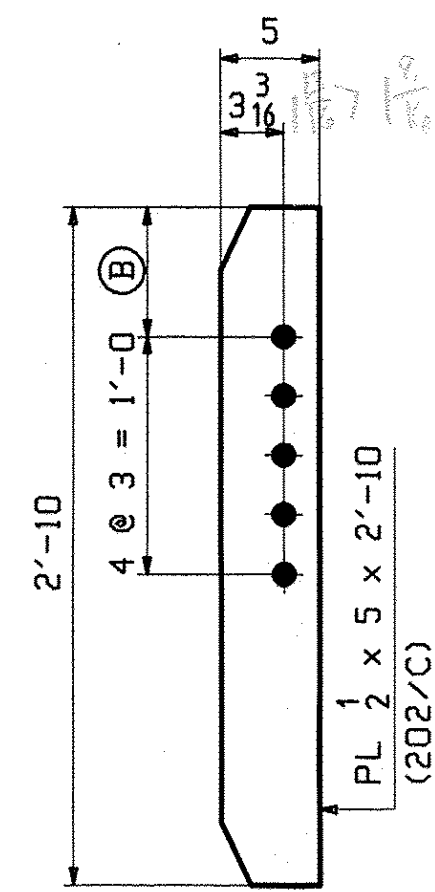


MARK "A"
DIAPH CONN @ PIER BRG



MARK "B"
INT DIAPH CONN

MARK "A"	QTY	Ⓐ	
x201a	2	6 1/2	LOW END
x201b	2	8 7/16	HIGH END DROP = 1 1/16

MARK "B"	QTY	Ⓑ	
x201c	22	6 1/2	LOW END
x201d	6	6 15/16	HIGH END DROPS = 3/8 TO 1/2
x201f	16	8 3/8	HIGH END DROP = 1 1/16 TO 2

Trans Received
 CKD: [Signature] Date: 11/12/11
 Approved as noted
 BY: [Signature] DATE: 11/12/11
 NOV 14 2011

NOTE:
FOR GENERAL NOTES SEE DRAWING GN201.

				NOV 8 2011		
0						
REV.	DATE	REMARKS	DWN	CHK	APVL	SHOP
MATERIAL: M270-50W		SURFACE PREP. & PAINT: SEE DWG GN201		HOLES: 15/16" Ø		SHOP BOLTS: NONE
DESCRIPTION: STANDARD DETAILS						
CASCO BAY STEEL STRUCTURES, INC. 1 WALLACE AVE. PHONE (207) 780-6722 SOUTH PORTLAND, ME 04106 FAX. (207) 780-6726						
STRUCTURE: VT 107 (RIVER STREET) over WHITE RIVER			DRAWN: JTB	DATE: 09/29		
APPROACH SPAN			CHKD: PCP	DATE: 10/4/11		
County of WINDSOR						
LOCATION: TOWN OF BETHEL, VERMONT			JOB NO.	DWG NO.		
PROJ NO. BRP 022-1(14)			498	X201		
CUSTOMER: BECK & BELLUCCI					REV. △	