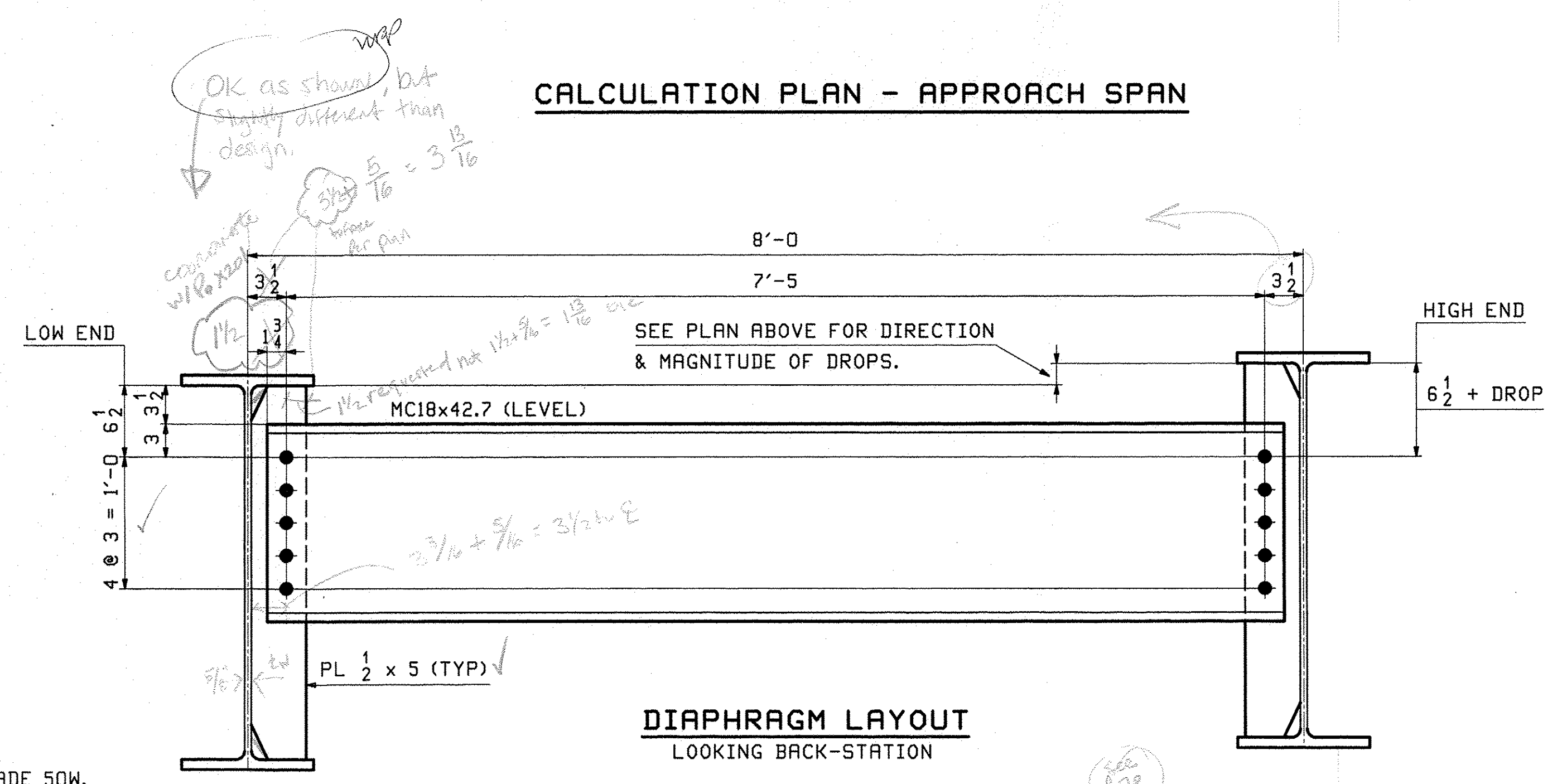


CALCULATION PLAN - APPROACH SPAN

**** NOTE ****
 THE PURPOSE OF THIS DRAWING IS TO COORDINATE GEOMETRIC CONTROL INFORMATION. THIS DWG IS SUBMITTED FOR INFORMATION ONLY AND IS NOT INTENDED FOR SHOP FABRICATION.

- CALCULATION PLAN NOTES:
1. LONGITUDINAL DIMENSIONS ARE SLOPING ALONG BOTTOM OF WEB WITH CORRECTIONS MADE FOR DL CAMBER, V.C. & GRADE (UN).
 2. TRANSVERSE DIMENSIONS ARE IN A HORIZONTAL PLANE (UN).
 3. ARROW POINTS TOWARD LOW END OF MEMBER.
 4. ENDS OF STRINGERS ARE VERTICAL AFTER DL ROTATION.
 5. DIAPHRAGM STIFFENERS ARE NORMAL TO GRADE.
 6. BOTTOM POINT NUMBERS = TOP POINT NUMBERS + 100

Line	LEN A	BRG 1	BRG 2
1	70'-7 5/16	.0110	.0021
2	69'-3 3/16	.0112	.0021
3	67'-11	.0114	.0021
4	66'-6 13/16	.0116	.0022
5	65'-2 11/16	.0118	.0022



DIAPHRAGM LAYOUT
 LOOKING BACK-STATION

- DIAPHRAGM NOTES:**
1. MATERIAL SHALL BE AASHTO M270 (ASTM A709) GRADE 50W.
 2. ALL BOLT HOLES SHALL BE 15/16" FOR 7/8" HSB.

REV.	DATE	REMARKS	DWN	CHK	APVL	SHOP
0						
MATERIAL:		SURFACE PREP. & PAINT:		HOLES:		SHOP BOLTS:
DESCRIPTION: CALCULATION PLAN						
CASCO BAY STEEL STRUCTURES, INC.						
1 WALLACE AVE.			PHONE (207) 780-6722			
SOUTH PORTLAND, ME 04106			FAX. (207) 780-6726			
STRUCTURE: VT 107 (RIVER STREET) over WHITE RIVER		DRAWN: JTB		DATE: 09/28		
APPROACH SPAN		CHKD: PCP		DATE: 10/4/11		
County of WINDSOR		JOB NO. 498		DWG NO. WS201		
LOCATION: TOWN OF BETHEL, VERMONT		CUSTOMER: BECK & BELLUCCI		REV.		
PROJ NO. BRF 022-1(14)						

Resubmit BY: DATE: 11/18/11
 Approved BY: DATE: 11/18/11
 NOV 14 2011
 VTrans Received Date by:

JTB Nov 14, 2011 09:53 AM C:\Users\jtb\Documents\43501_1.dwg

P.71
 31 x 12 x 1/4" cantonment floor expansion end