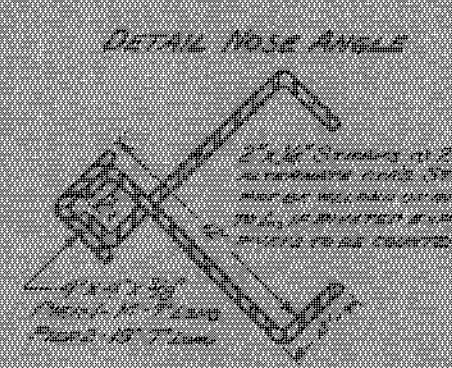
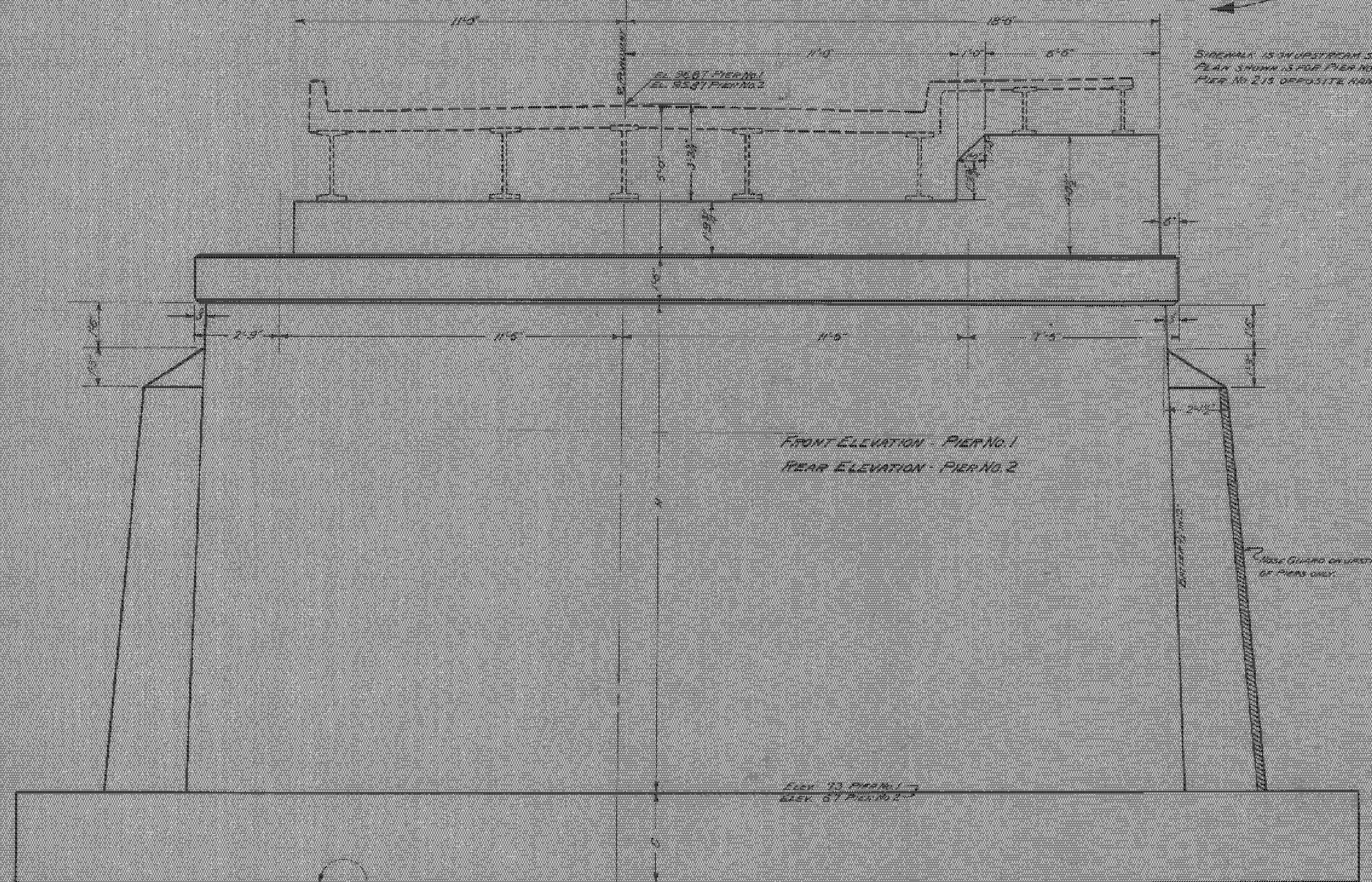
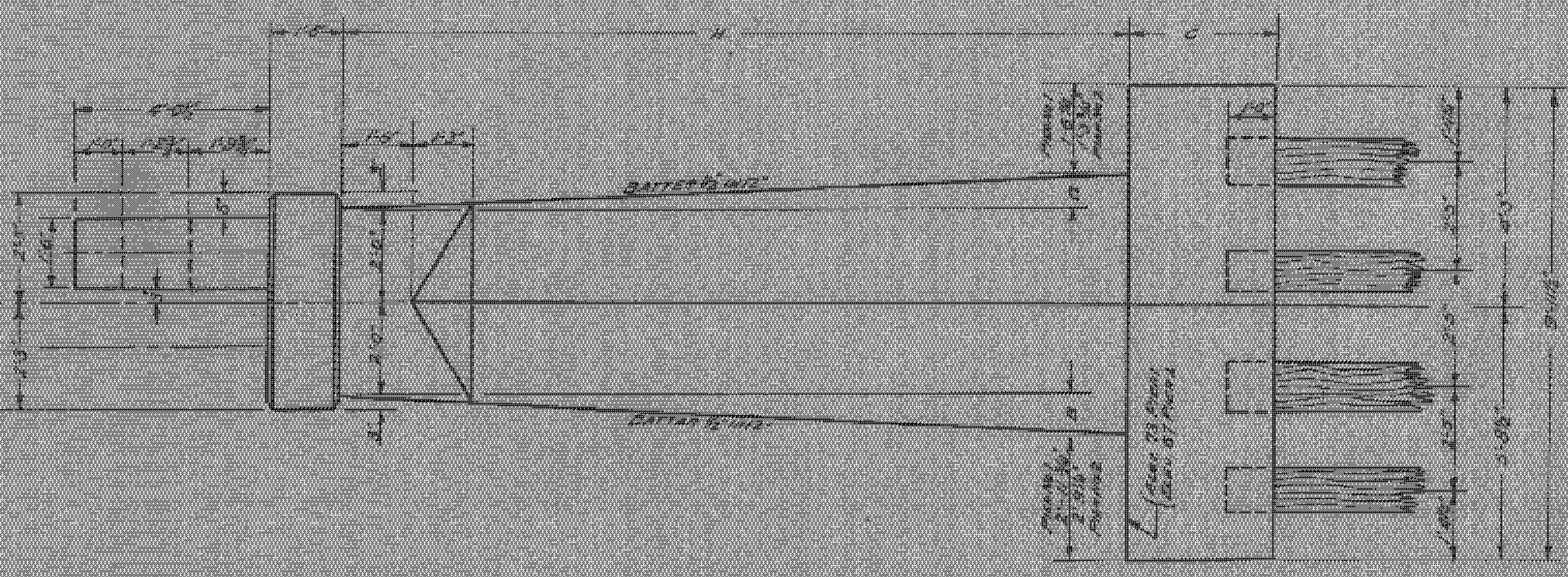
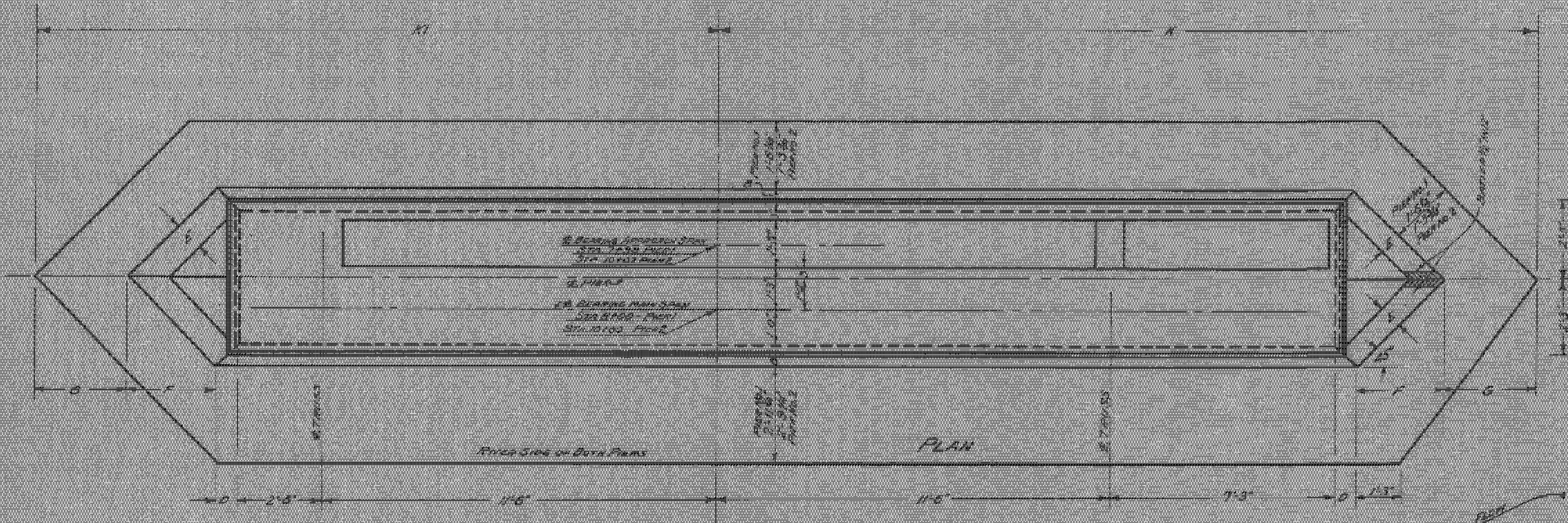


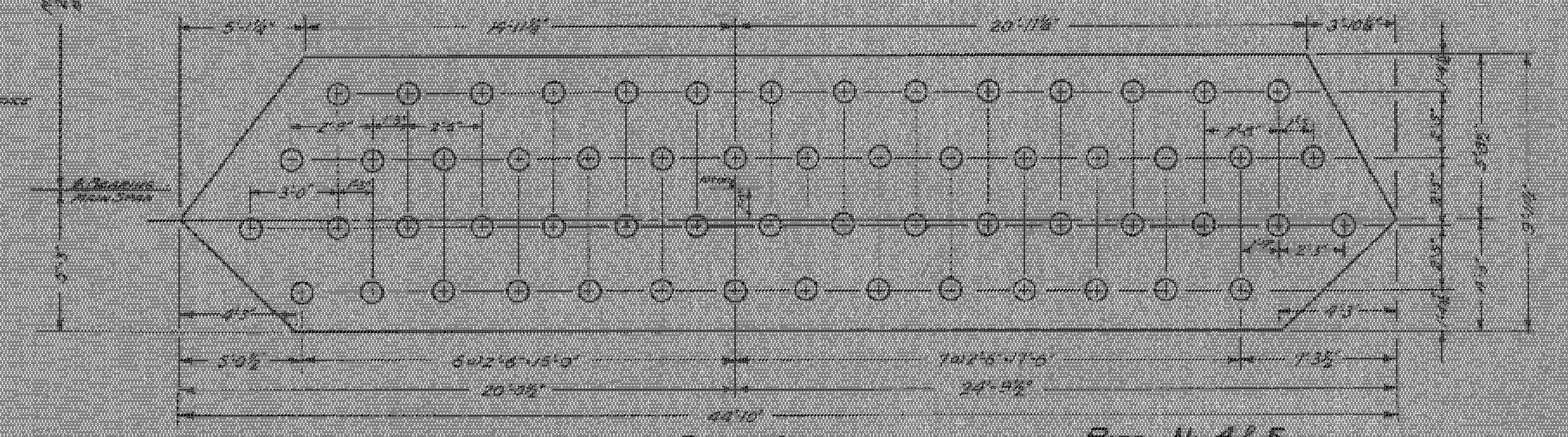
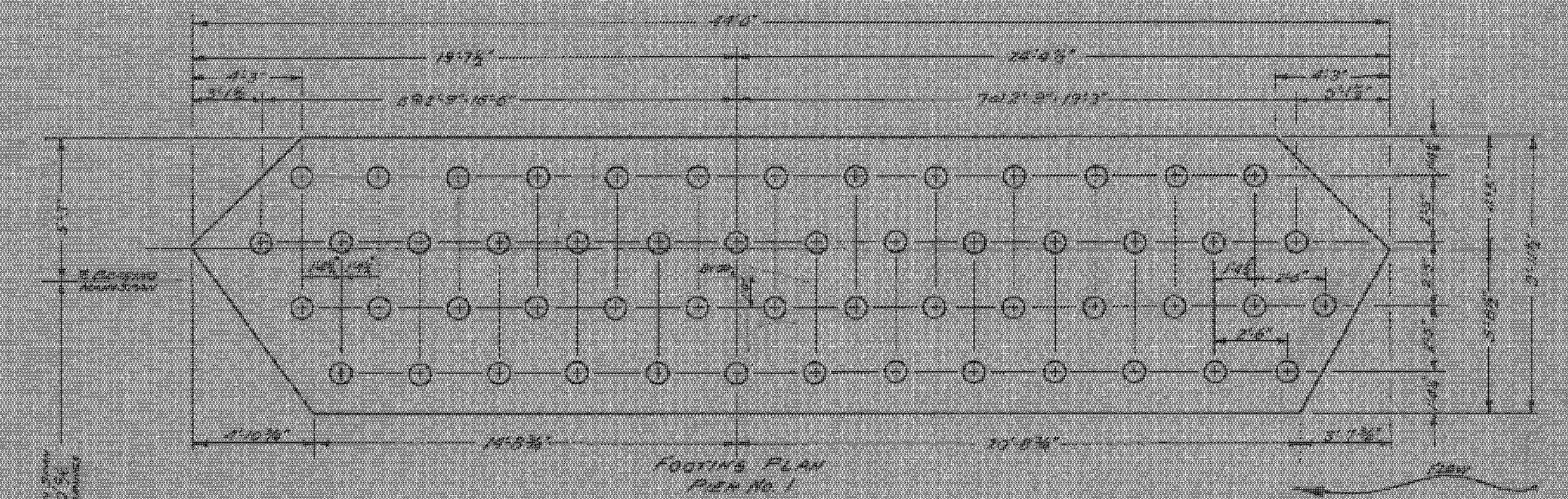
STATE ROAD DIST. NO. STATE ROAD DIST. NO. STATE ROAD DIST. NO.  
 3-A 1920 14 19

ALL CONCRETE IN THESE PIERS TO BE CLASS B, 1-2 1/2-3  
 ALL WORK AND MATERIALS SHALL CONFORM TO THE STANDARD SPECIFICATIONS (FOR THE  
 BRIDGE) OF THE VERMONT DEPT. OF HIGHWAYS 1926.  
 ROSE SLATS ON PIERS TO BE GIVEN ONE SWEEP COAT OF RED LEAD AND OIL AND ONE FIELD COAT  
 OF RED LEAD AND OIL AND ONE FIELD COAT GRAPHITE PAINT.



SEE NOTES ON SHEET NO. ABUTMENTS 1 & 2.

FURNISHING AND PLACING ROSE SLATS IN PIERS TO BE INCLUDED IN THE UNIT PRICE FOR REINFORCING STEEL.



NOTE  
 PIER NO. 1 - PIER NOS.  
 PIER NO. 2 - PIER NOS.

PIER No. 1 & 2  
**PIER DETAILS**  
**BRIDGE OVER WHITE RIVER**  
**BETHEL, VT.**

PIER No. 1, PILLS DRIVEN IN UPSTREAM HALF  
 OF PIER AND PARTINGS LOWERED 4'-0".  
 FOUNDATION PIER No. 2 HANDRAIL.  
 PIER No. 2, PILLS OMITTED AND FOOTINGS  
 LOWERED TO 8'-0" BELOW LOWEST POINT IN  
 STREAM BED.

PIER NO. 1	PIER NO. 2	ESTIMATED QUANTITIES - 2 PIERS
H. 15'-4 1/2"	H. 22'-4 1/2"	STRUCTURE EXCAVATION 1721 CUYDS.
A. 7'-3 1/2"	A. 7'-3 1/2"	1-2 1/2-5 CONCRETE 370 CUYDS.
C. 2'-0" ALEAST	C. 3'-0" ALEAST	REINFORCING STEEL 377 LBS.
D. 8'-0"	D. 7'-0"	TIMBER PILING 2875 LIN. FT.
E. 2'-0"	E. 2'-0"	
F. 2'-0"	F. 2'-0"	
G. 2'-0"	G. 2'-0"	

Surveyed by Thomas  
 Designed by H.P. Bagshaw  
 Drawn by H.P. Bagshaw and C. S. Brown Jr.  
 Checked by S. E. Brown  
 Series 5 No. 101 of 17 Filed 5-23-20  
 Sheet 14 of 17 Sheets