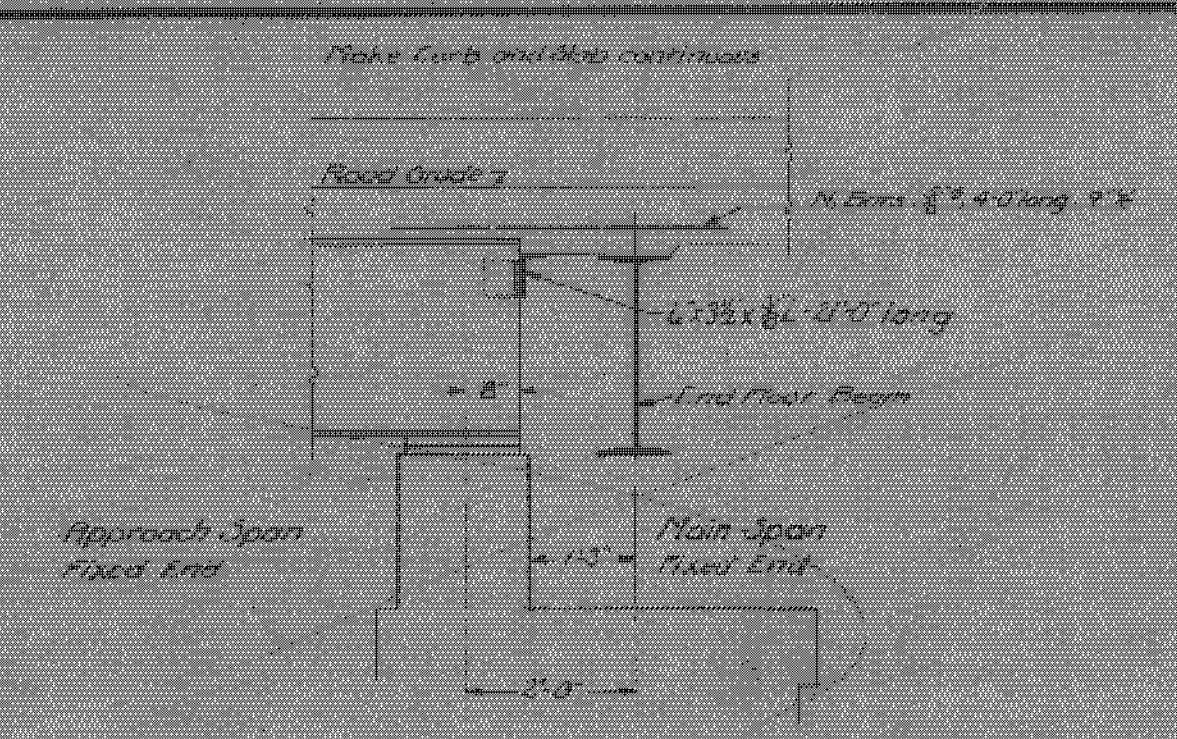
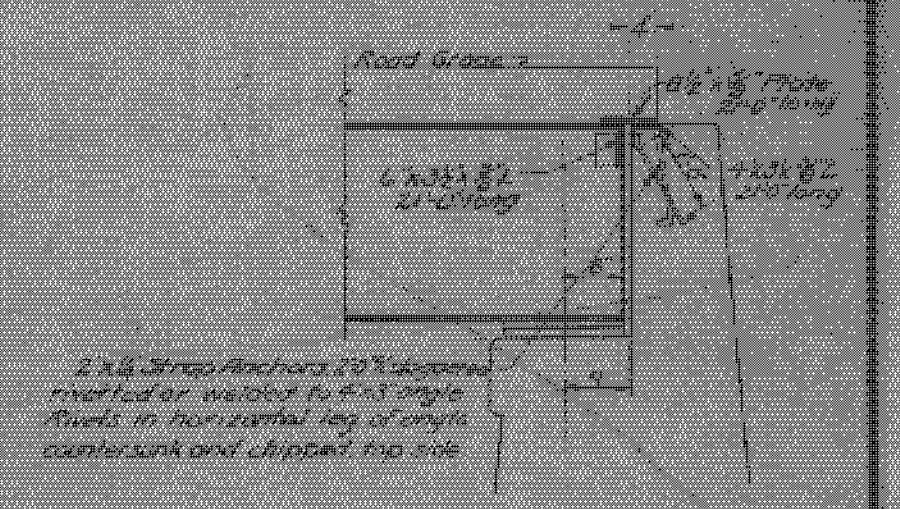


TYPICAL FLOOR SECTION  
THRU TRUSS  
See Standard Detail S-15  
Scale 3/4\"/>

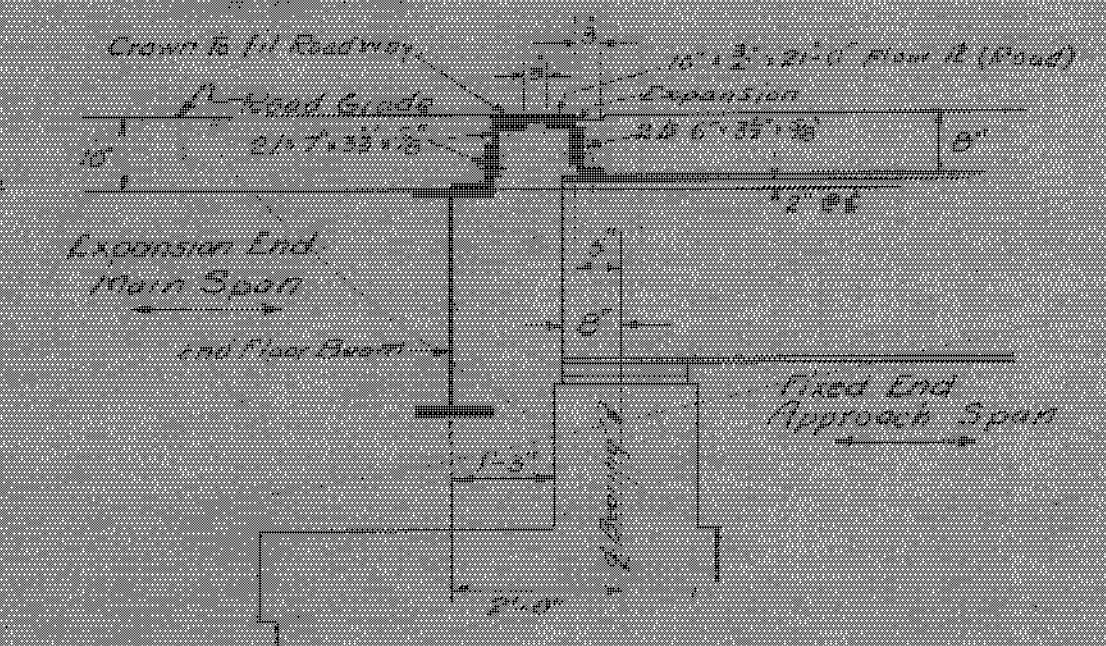
SPAN NO. 5



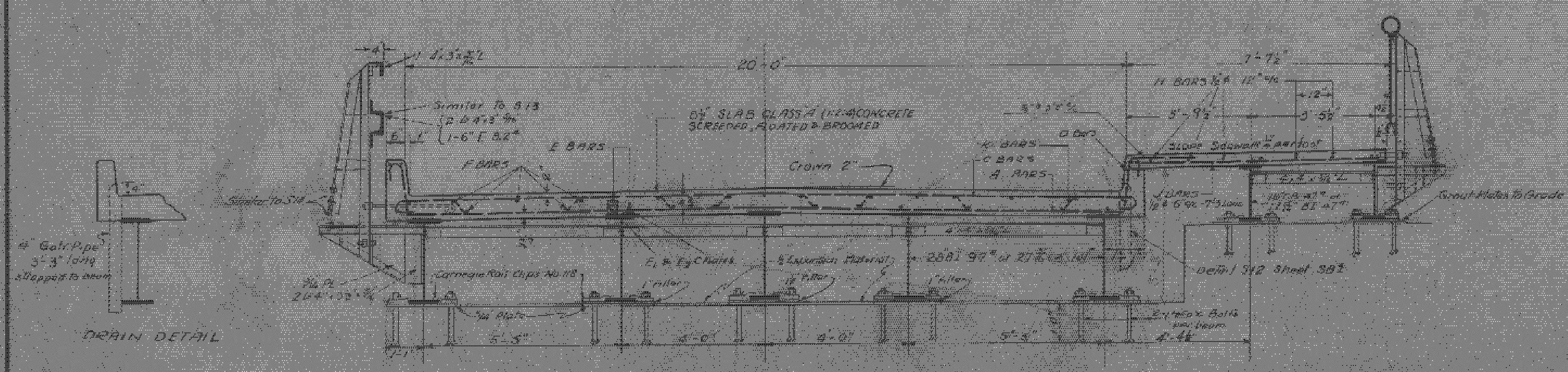
DETAIL AT PIER  
FIXED END-MAIN AND APPROACH SPANS  
Use S-10 for Sidewalk



DETAIL AT ABUTMENT  
EXPANSION END-APPROACH SLAB  
Sidewalk Expansion Detail similar

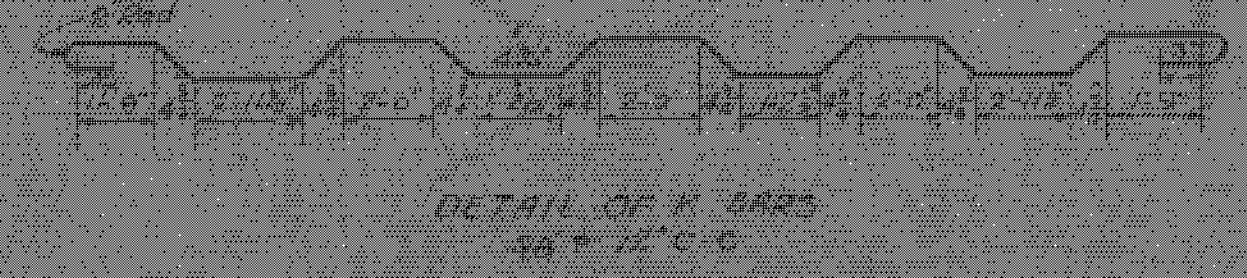


ROAD EXPANSION DEVICE  
BETWEEN APPROACH SPAN & BRIDGE  
For Bridge 25 Dist 10 Detail Use as in  
Sidewalk Expansion Similar Detail. Over Run  
at curb to be supported by Road Expansion Device  
Scale 3/4\"/>



TYPICAL FLOOR SECTION  
APPROACH SPAN  
Scale 3/4\"/>

Note: Ticks of collision rails on approach spans  
must face with faces of collision rails on main span.  
SPAN NO. 2 & 3



DETAIL OF X BARS  
Scale 1 1/2\"/>

STEEL SUPERSTRUCTURE  
200'-0\"/>

THIS PLATE USED FOR  
BRIDGE 25-DIST 10

THIS SHEET INDICATED BY SET 3020-200-1 (See Notes on Set 3020)

Surveyed by	John Morgan
Designed by	G.A. Hartman
Drawn by	G.A. Hartman
Traced by	G.W. O'Neil
Checked by	J.R. Caldwell
Scale	3/4\"/>
Sheet	141 OF 148