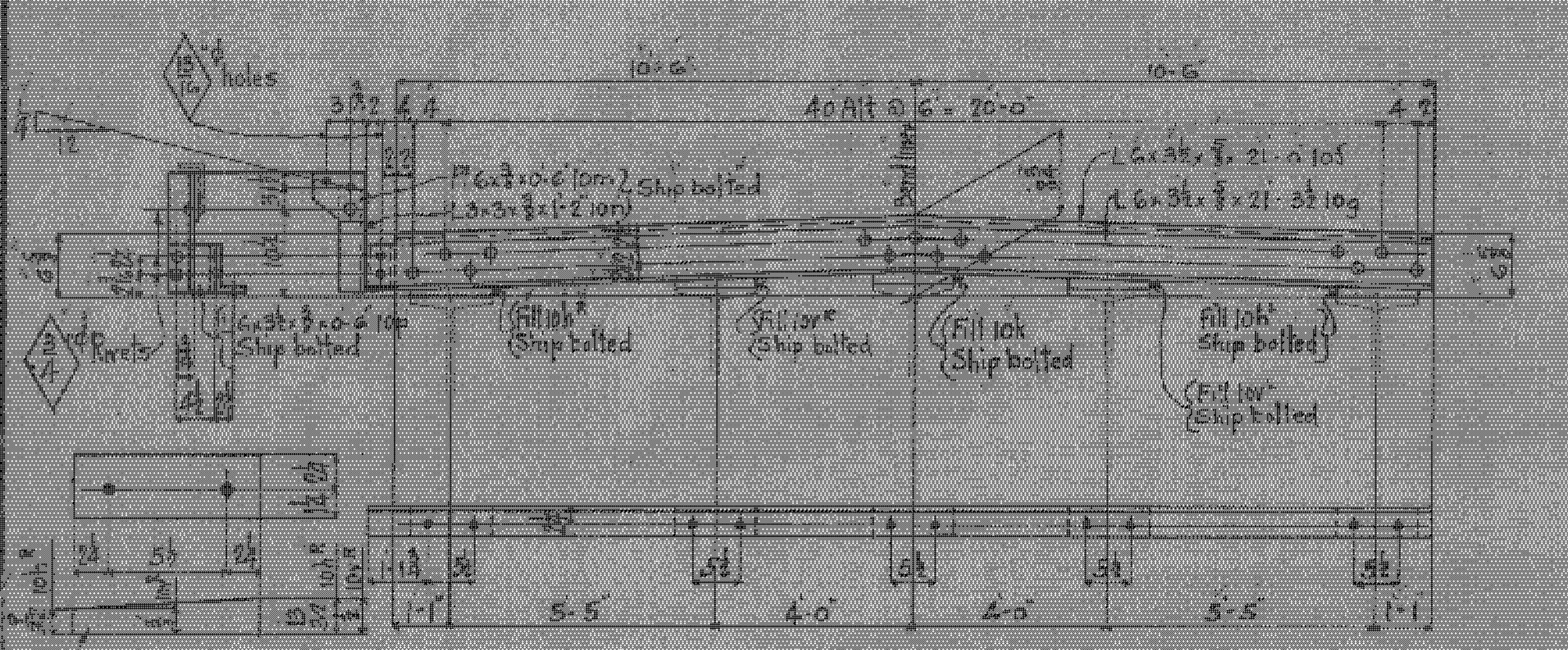
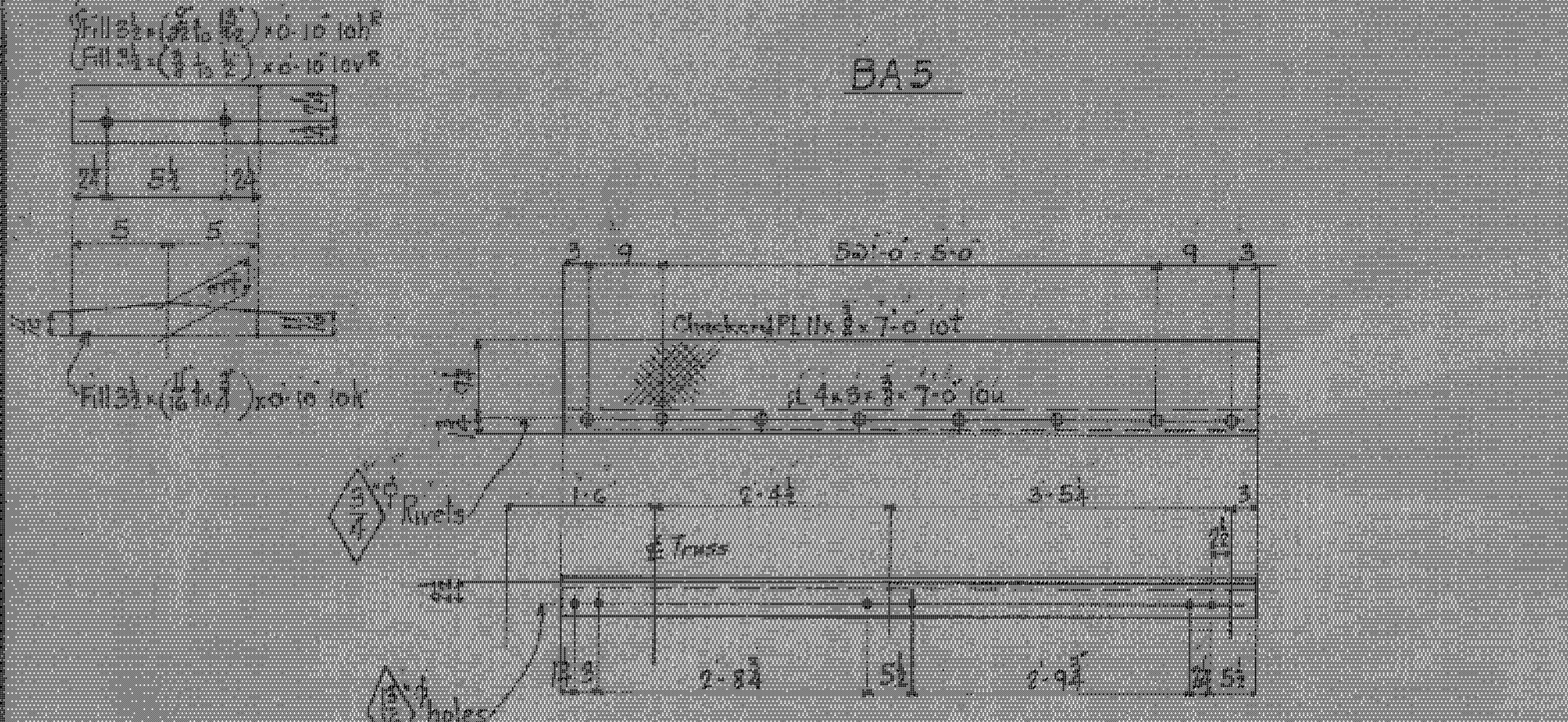


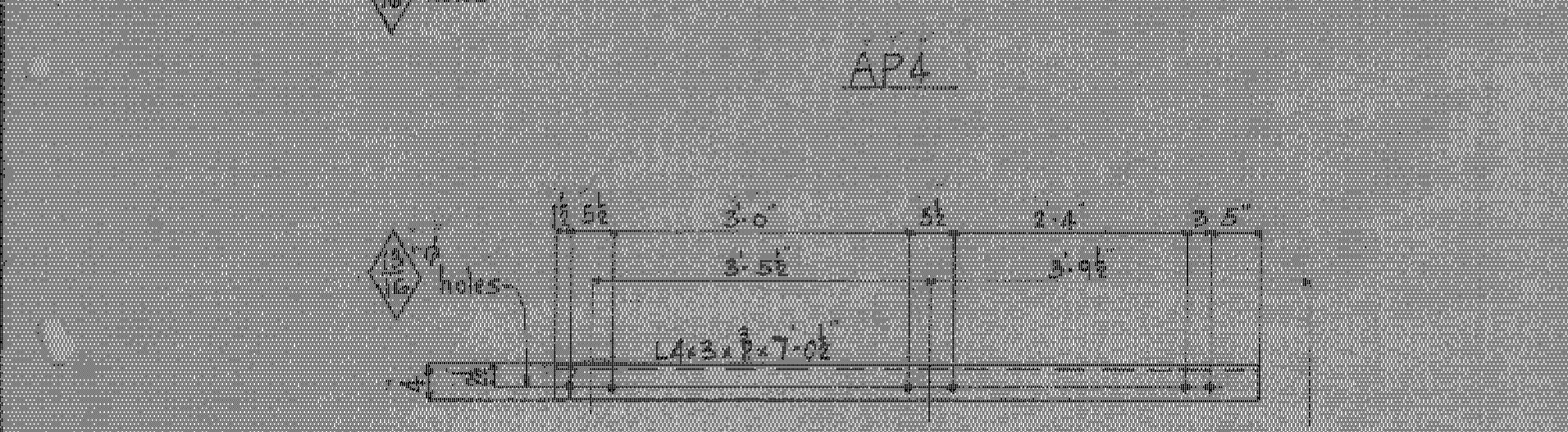
AP3



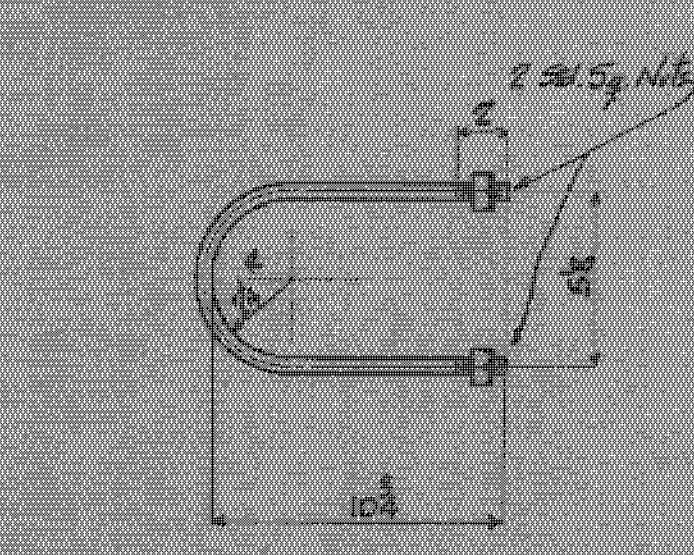
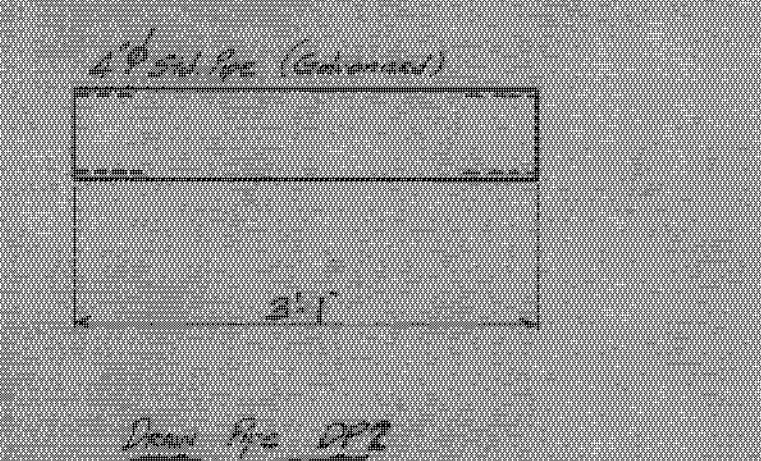
BA5



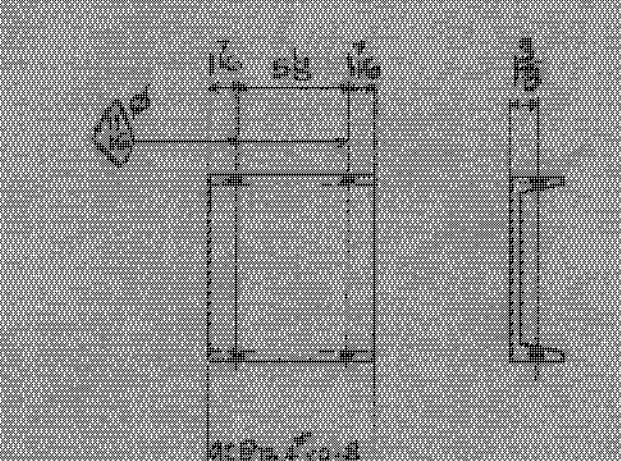
AP4



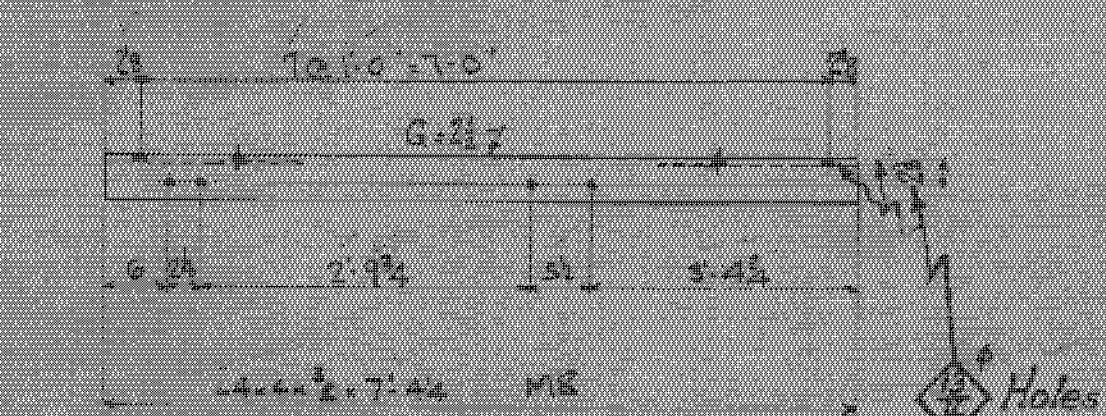
BA6



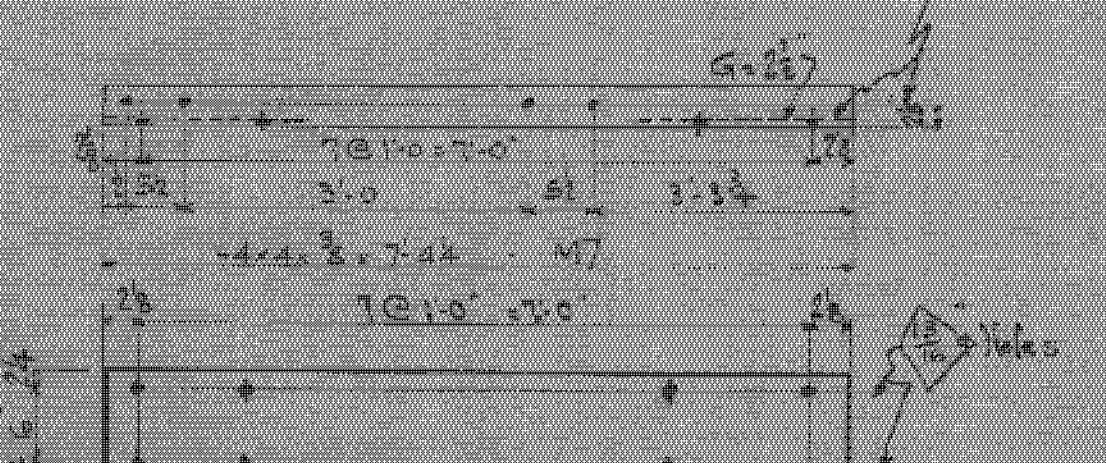
U Bolt UB2
 5/8 Rod x 2'-0 long (Aut)



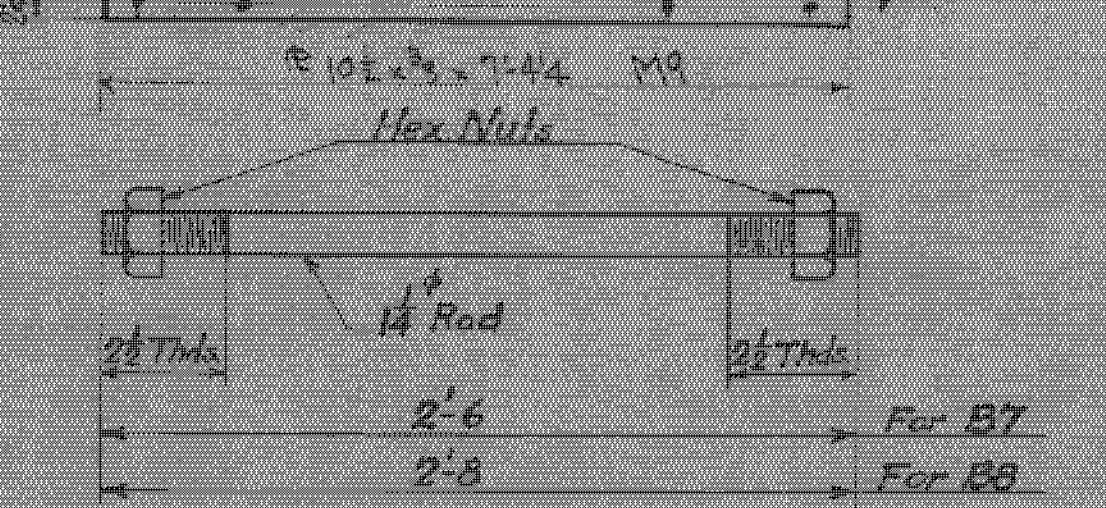
M6



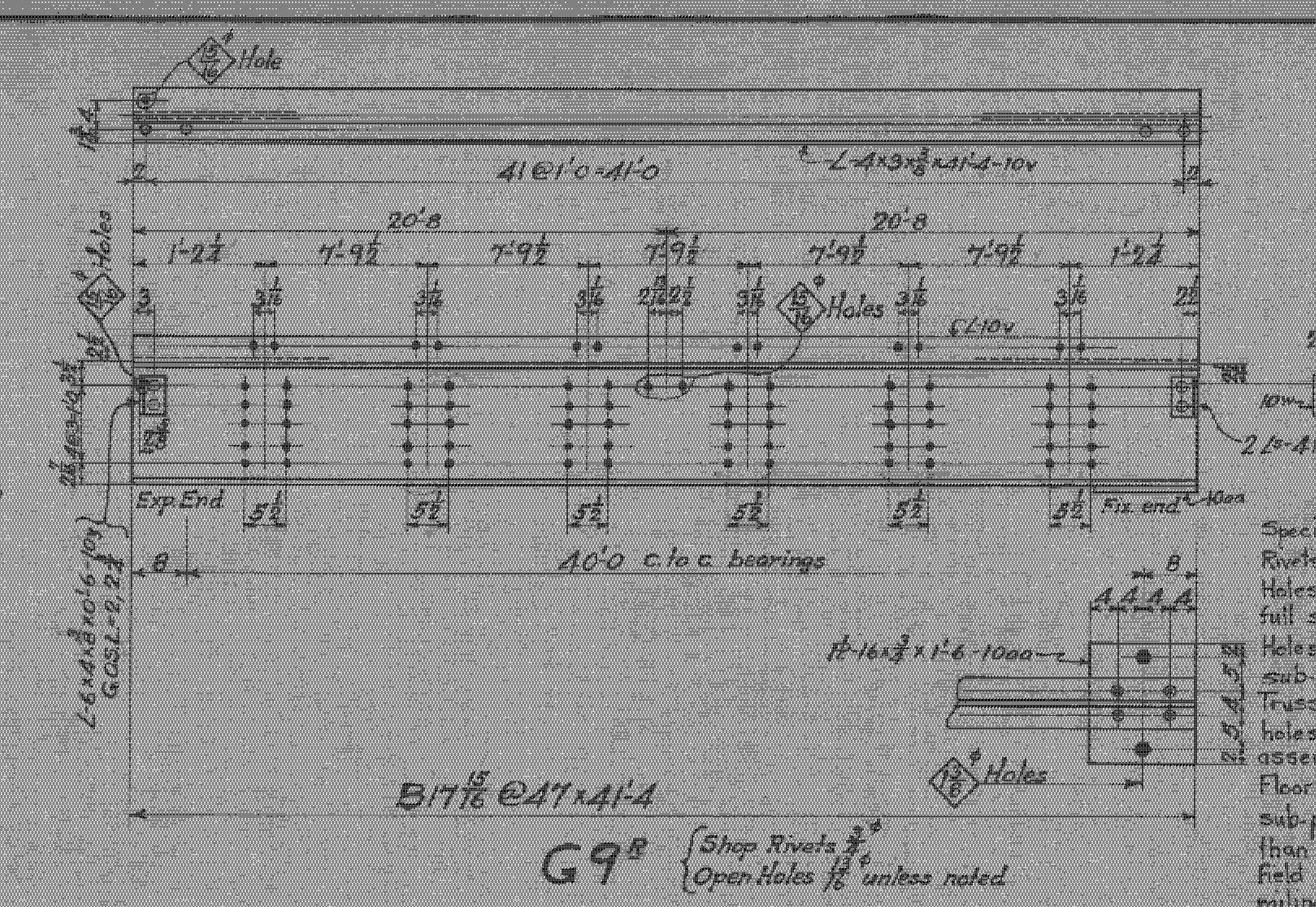
M8



M7



M9



B7 1/8 @ 41' x 41'-4
 G9^R { Shop Rivets 3/4
 Open Holes 1/8 unless noted

Specifications: VI State Highway Specifications 1926
 Rivets 3/4" Open Holes 1/8" Unless noted
 Holes in material 3/4" thick or less may be punched full size.
 Holes in material more than 3/4" thick shall be sub-punched and reamed or drilled from solid.
 Truss members shall be assembled in the shop and holes for field connections reamed or drilled while assembled and the members match marked.
 Floor beams and Stringers connections to be sub-punched and reamed to a metal template not less than 1" thick or reamed while assembled.
 Field connections for laterals, sway bracing and railing punched full size.
 Shop Paint: One coat of approved red lead and oil.

- Required List
- One - Apron Plate - AP3
 - One - do - AP4
 - One - Bearing Angle - BA5
 - One - do - BA6
 - 4 - Draw Pipes - DP2
 - 4 - U Bolts - UB2
 - 16 - Separators - M6
 - One - Angles - M7
 - One - do - M8
 - 14 - Tension Bolts - B7
 - 1 - " - B8
 - One - Girder - G9^R
 - One - " - G9^L
 - One - Plate - M9

BETHLEHEM STEEL COMPANY
 Bethlehem, Pa.

DETAIL OF Apron Pls + Bearing Angles
 Bridge over White River, Bethel, Stockbridge, R.I.
 CUSTOMER: Chas. I. Hosmer, Greenfield, Mass.

SHOP PAINT: See note
 RIVETS: 7/8 unless noted 15-8
 OPEN HOLES: 1/8 UNLESS NOTED

DRAWN BY: A.M.S. DATE: 8-16-23 CHECKED BY: DATE: 8-19-23

REVISIONS:

Shop Bill #P51006101 FILE: F7814 CONT: ED1447 DWG: 10