

**ALUMINUM APPROACH RAIL  
RAIL DIMENSIONS FOR A CURB CONDITION**

POST NO.	RAIL HEIGHT DIMENSIONS			OFFSET BLOCK DIMENSIONS			
	A	B	C	D	E	F	G
1	4'-1 <sup>5</sup> / <sub>16</sub> "	3'-2 <sup>5</sup> / <sub>16</sub> "	1'-9 <sup>11</sup> / <sub>16</sub> "	11 <sup>7</sup> / <sub>16</sub> "	1'-5 <sup>1</sup> / <sub>4</sub> "	2'-9 <sup>3</sup> / <sub>16</sub> "	1'-5 <sup>1</sup> / <sub>16</sub> "
2	3'-10 <sup>5</sup> / <sub>16</sub> "	3'-1 <sup>9</sup> / <sub>16</sub> "	1'-9 <sup>1</sup> / <sub>4</sub> "	9 <sup>3</sup> / <sub>4</sub> "	1'-4 <sup>1</sup> / <sub>16</sub> "	2'-6 <sup>3</sup> / <sub>8</sub> "	1'-3 <sup>1</sup> / <sub>2</sub> "
3	3'-7 <sup>3</sup> / <sub>8</sub> "	2'-11 <sup>11</sup> / <sub>16</sub> "	1'-8 <sup>13</sup> / <sub>16</sub> "	8 <sup>1</sup> / <sub>8</sub> "	1'-2 <sup>7</sup> / <sub>8</sub> "	2'-3 <sup>1</sup> / <sub>2</sub> "	1'-1 <sup>5</sup> / <sub>16</sub> "
4	3'-4 <sup>1</sup> / <sub>16</sub> "	2'-10 <sup>1</sup> / <sub>16</sub> "	1'-8 <sup>3</sup> / <sub>8</sub> "	6 <sup>1</sup> / <sub>16</sub> "	1'-1 <sup>11</sup> / <sub>16</sub> "	2'-0 <sup>1</sup> / <sub>16</sub> "	-
5	-	2'-7 <sup>7</sup> / <sub>8</sub> "	1'-7 <sup>13</sup> / <sub>16</sub> "	-	1'-0 <sup>1</sup> / <sub>16</sub> "	-	-
6	-	2'-5 <sup>3</sup> / <sub>4</sub> "	1'-7 <sup>1</sup> / <sub>4</sub> "	-	10 <sup>1</sup> / <sub>2</sub> "	-	-
7	-	2'-3 <sup>3</sup> / <sub>16</sub> "	1'-6 <sup>5</sup> / <sub>8</sub> "	-	8 <sup>5</sup> / <sub>16</sub> "	-	-

ALL REMAINING POSTS ARE TO HAVE THE SAME DIMENSIONS AS POST NO. 7

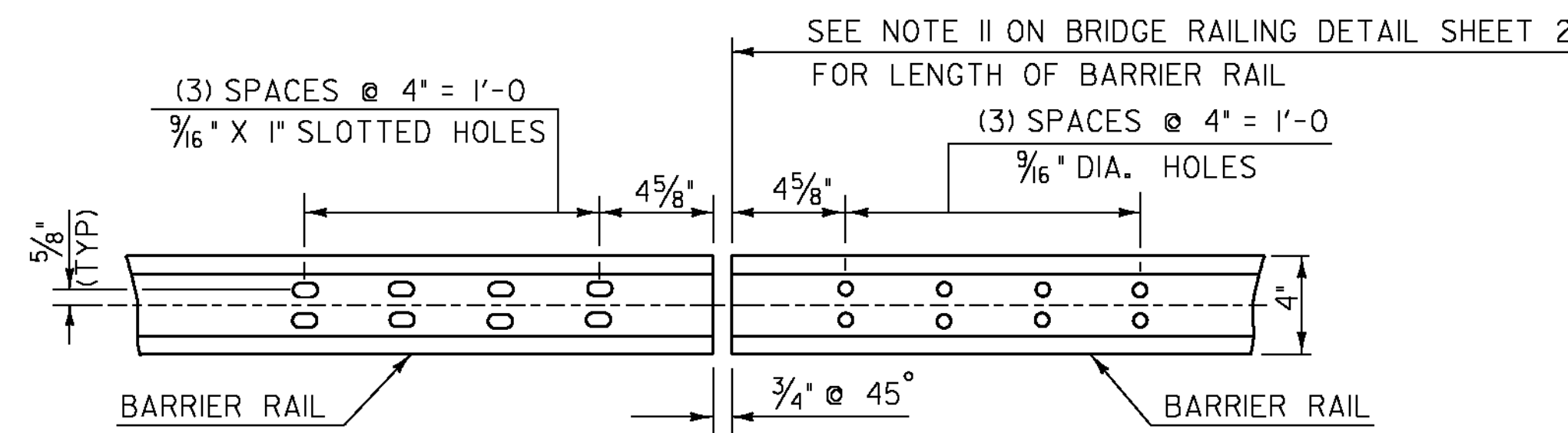
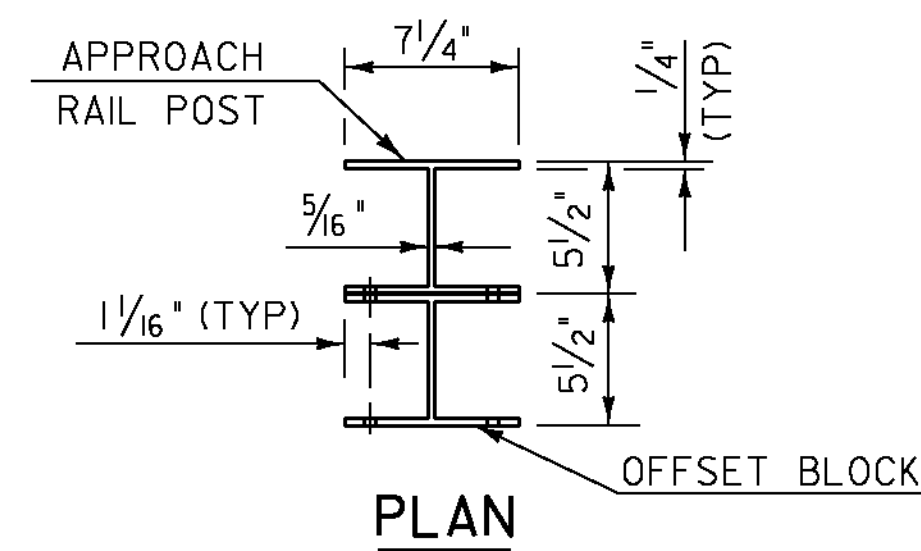
**ALUMINUM APPROACH RAIL  
RAIL DIMENSIONS FOR A SIDEWALK CONDITION**

POST NO.	RAIL HEIGHT DIMENSIONS			OFFSET BLOCK DIMENSIONS			
	A	B	C	D	E	F	G
1	3'-4 <sup>3</sup> / <sub>4</sub> "	2'-5 <sup>3</sup> / <sub>4</sub> "	1'-5 <sup>1</sup> / <sub>8</sub> "	11 <sup>7</sup> / <sub>16</sub> "	1'-0 <sup>5</sup> / <sub>8</sub> "	2'-4 <sup>5</sup> / <sub>8</sub> "	-
2	3'-2 <sup>1</sup> / <sub>16</sub> "	2'-5 <sup>3</sup> / <sub>8</sub> "	1'-5 <sup>5</sup> / <sub>16</sub> "	9 <sup>3</sup> / <sub>4</sub> "	1'-0 <sup>1</sup> / <sub>16</sub> "	2'-2 <sup>3</sup> / <sub>8</sub> "	-
3	3'-0 <sup>1</sup> / <sub>16</sub> "	2'-5"	1'-5 <sup>1</sup> / <sub>2</sub> "	8 <sup>1</sup> / <sub>8</sub> "	11 <sup>1</sup> / <sub>2</sub> "	2'-0 <sup>3</sup> / <sub>16</sub> "	-
4	2'-10 <sup>5</sup> / <sub>8</sub> "	2'-4 <sup>5</sup> / <sub>8</sub> "	1'-5 <sup>1</sup> / <sub>16</sub> "	6 <sup>1</sup> / <sub>16</sub> "	10 <sup>5</sup> / <sub>16</sub> "	1'-9 <sup>15</sup> / <sub>16</sub> "	-
5	-	2'-4 <sup>1</sup> / <sub>8</sub> "	1'-5 <sup>15</sup> / <sub>16</sub> "	-	10 <sup>3</sup> / <sub>16</sub> "	-	1'-3 <sup>3</sup> / <sub>16</sub> "
6	-	2'-3 <sup>5</sup> / <sub>8</sub> "	1'-6 <sup>3</sup> / <sub>16</sub> "	-	9 <sup>1</sup> / <sub>16</sub> "	-	1'-2 <sup>7</sup> / <sub>16</sub> "
7	-	2'-3 <sup>1</sup> / <sub>8</sub> "	1'-6 <sup>7</sup> / <sub>8</sub> "	-	8 <sup>1</sup> / <sub>16</sub> "	-	1'-1 <sup>11</sup> / <sub>16</sub> "

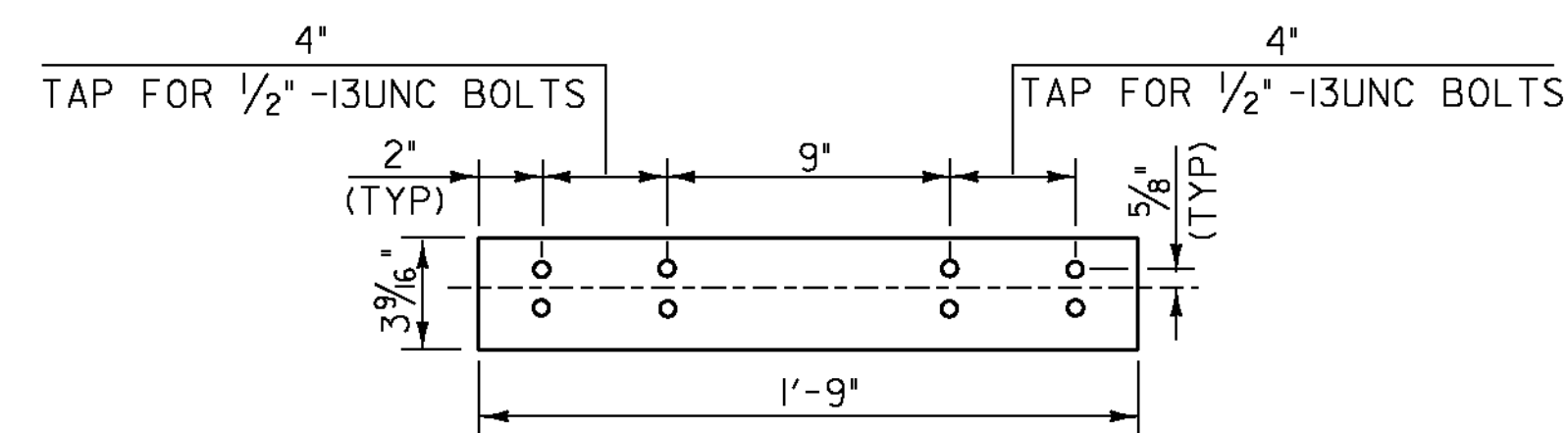
ALL REMAINING POSTS TO HAVE THE SAME DIMENSIONS AS POST NO. 7

**NOTES**

- POST 1 THROUGH 7 SHALL BE EXTRUDED ALUMINUM.
- ALL STRUCTURAL STEEL SHALL BE AASHTO M270 GRADE 36 GALVANIZED AFTER FABRICATION.
- ALL ITEMS NOT OTHERWISE INDICATED SHALL MEET THE SPECIFICATION REQUIREMENTS OF THE STANDARD SHEETS ON WHICH THEY ARE DETAILED.
- SEE STANDARD G-1 FOR STEEL BEAM GUARD RAIL DETAILS. SEE BRIDGE RAILING DETAILS SHEET 1-2 FOR ALUMINUM BRIDGE RAILING DETAILS.
- THE COST OF ALL MATERIALS AND LABOR FOR THE SPLICE BETWEEN THE ALUMINUM APPROACH RAILING AND THE STEEL BEAM GUARD RAIL SHALL BE INCIDENTAL TO ITEM 621.74, ALUMINUM APPROACH RAILING.
- DETAILS ARE SHOWN FOR TRANSITION TO A 3 RAIL ALUMINUM BRIDGE RAILING.
- DIMENSIONS SHOWN ARE FROM A REFERENCE LINE AT THE FACE OF POST FOR A NORMAL CROWNED SECTION. APPROPRIATE CORRECTIONS SHALL BE MADE FOR CROSS SLOPES OTHER THAN A NORMAL SECTION.



**ELEVATION OF BARRIER RAIL (FROM BACK)  
AT ALL INTERMEDIATE RAIL SPLICES**



**ELEVATION OF BARRIER RAIL SPLICE BAR  
TO BE USED AT TRANSITION BETWEEN  
APPROACH RAIL & GUARD RAIL (FROM BACK)**

PROJECT NAME: BETHEL  
PROJECT NUMBER: BRF 022-1(14)

FILE NAME: s78f16ibra1.dgn  
PROJECT LEADER: M. EVANS-MONGEON  
DESIGNED BY: S. SCRIBNER  
BRIDGE RAILING DETAIL SHEET 4

PLOT DATE: 20-MAY-2011  
DRAWN BY: M. LONGSTREET  
CHECKED BY: S. SCRIBNER  
SHEET 104 OF 148