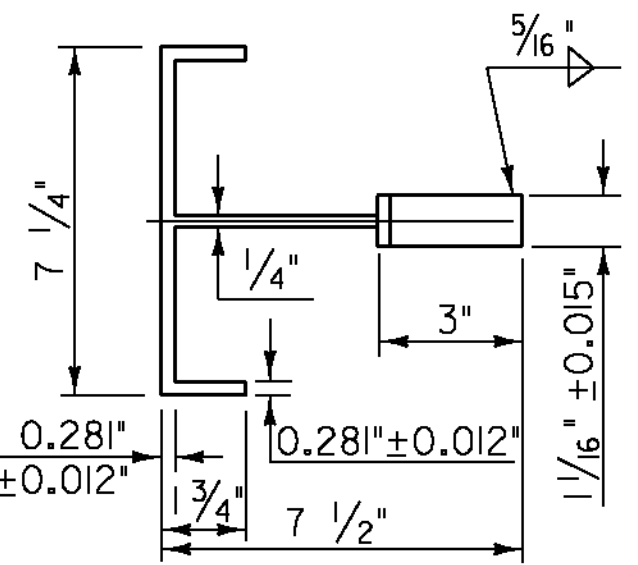
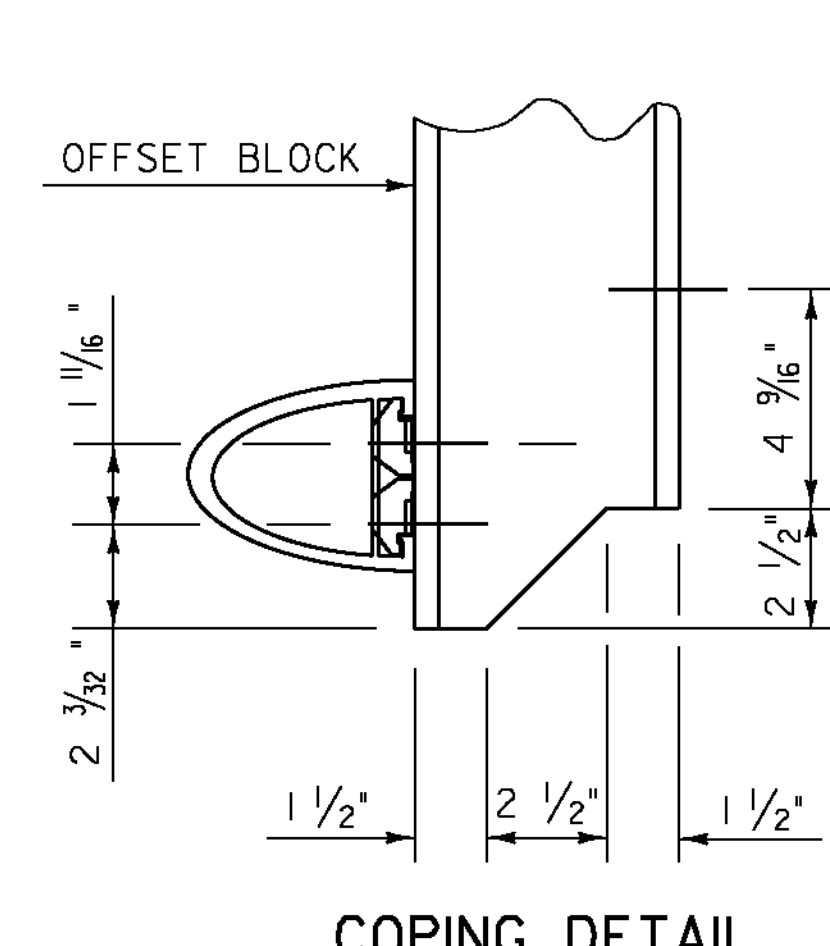


POST SIDE VIEW

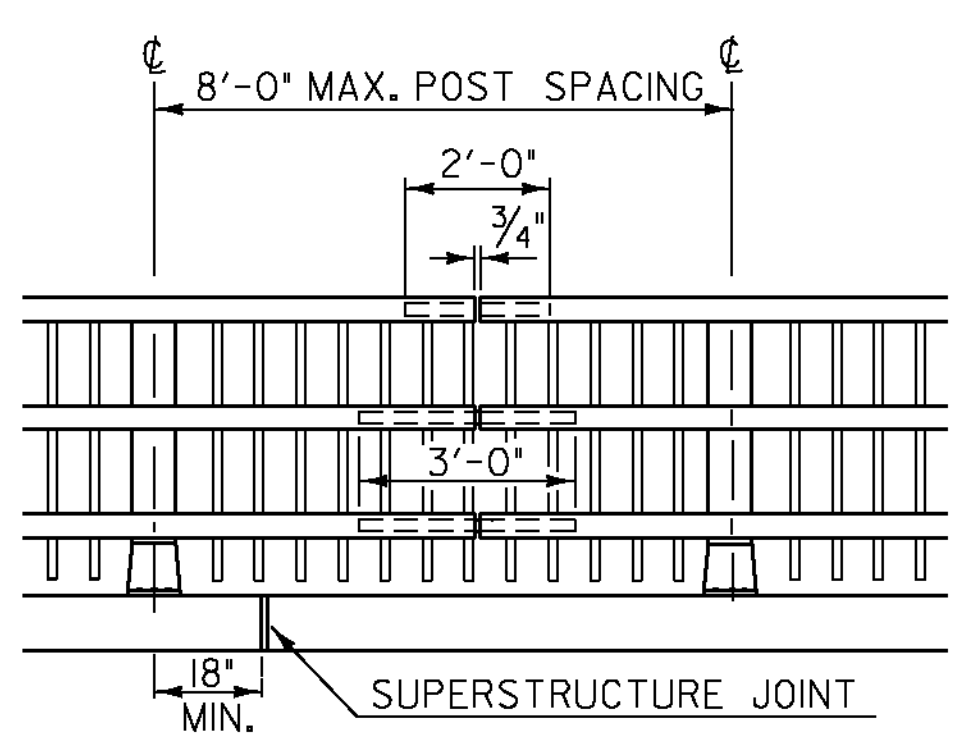


POST PLAN VIEW



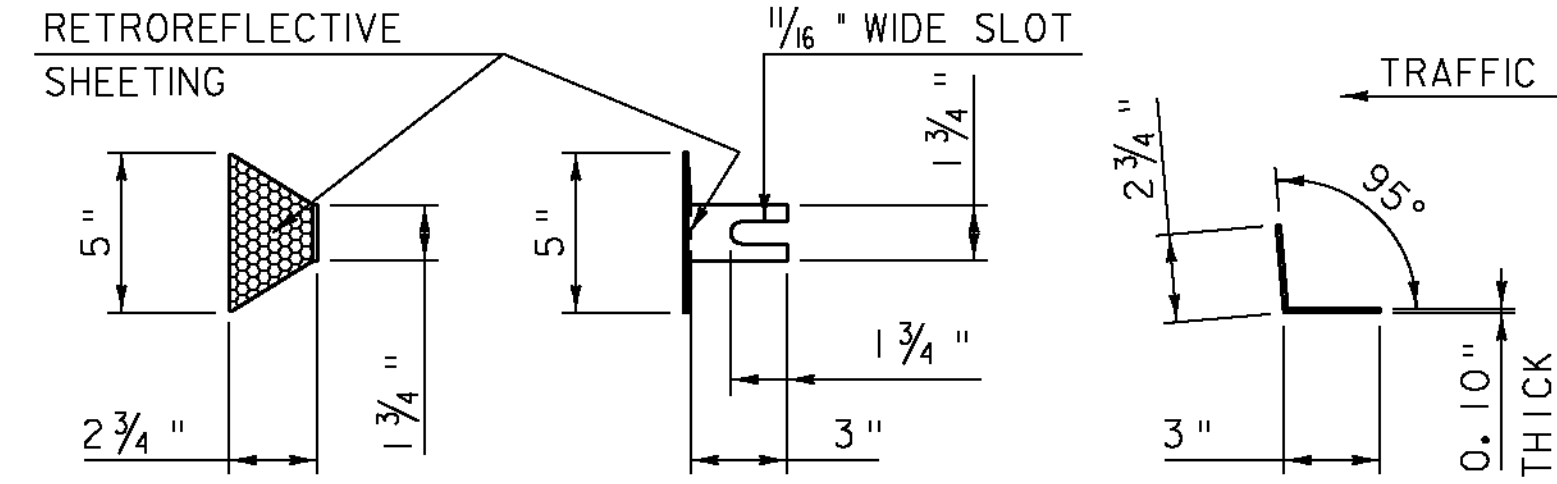
COPING DETAIL

- 1.) RETROREFLECTIVE MATERIAL SHALL MEET THE REQUIREMENTS OF SUBSECTION 750.08 AND SHALL BE A 0.063" ALUMINUM BACKING WHITE OR YELLOW REFLECTOR. WHITE IS TO BE INSTALLED ON THE DRIVER'S RIGHT. FOR ONE WAY BRIDGES, YELLOW IS TO BE INSTALLED ON THE DRIVER'S LEFT.
- 2.) INSTALL REFLECTOR DEVICE EVERY 30 FT (OR CLOSEST POST)
- 3.) PAYMENT SHALL BE INCIDENTAL TO CONTRACT ITEM 525.22

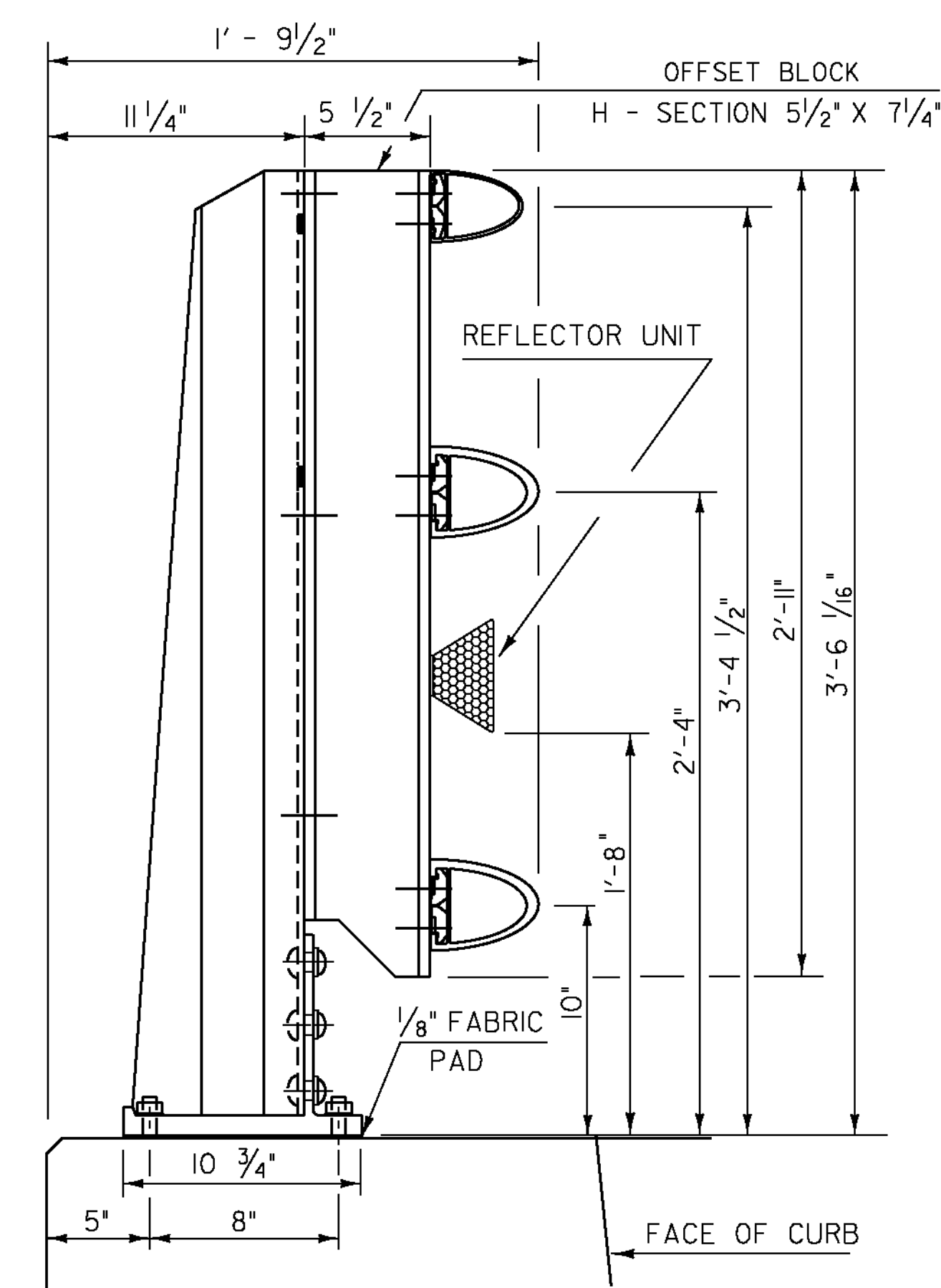


FRONT ELEVATION OF THREE RAIL WITH SPINDLES

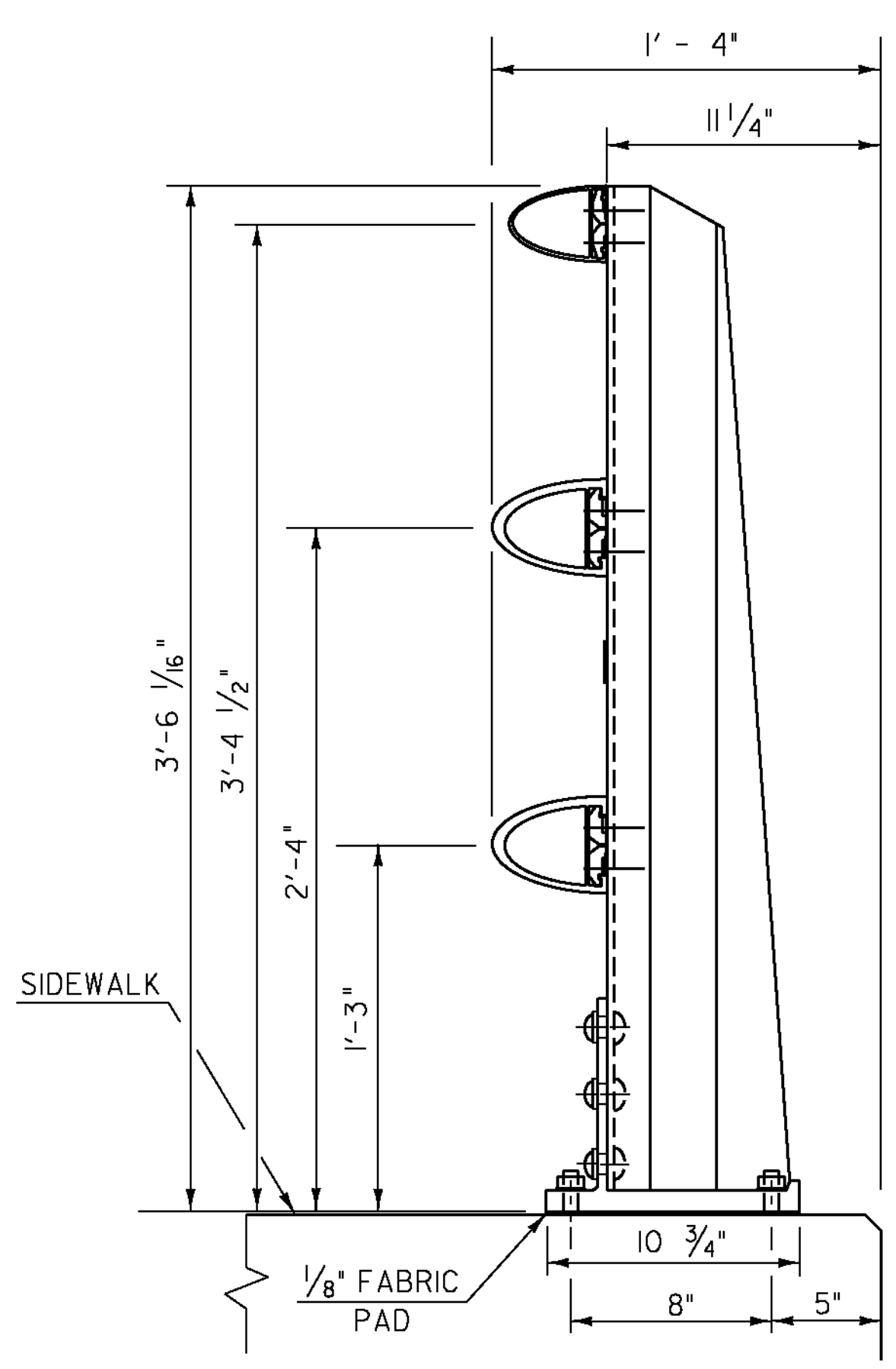
NOTE: RAIL POSTS ARE TO BE SET NORMAL TO GRADE UNLESS OTHERWISE DESIGNATED ON BRIDGE PLANS.



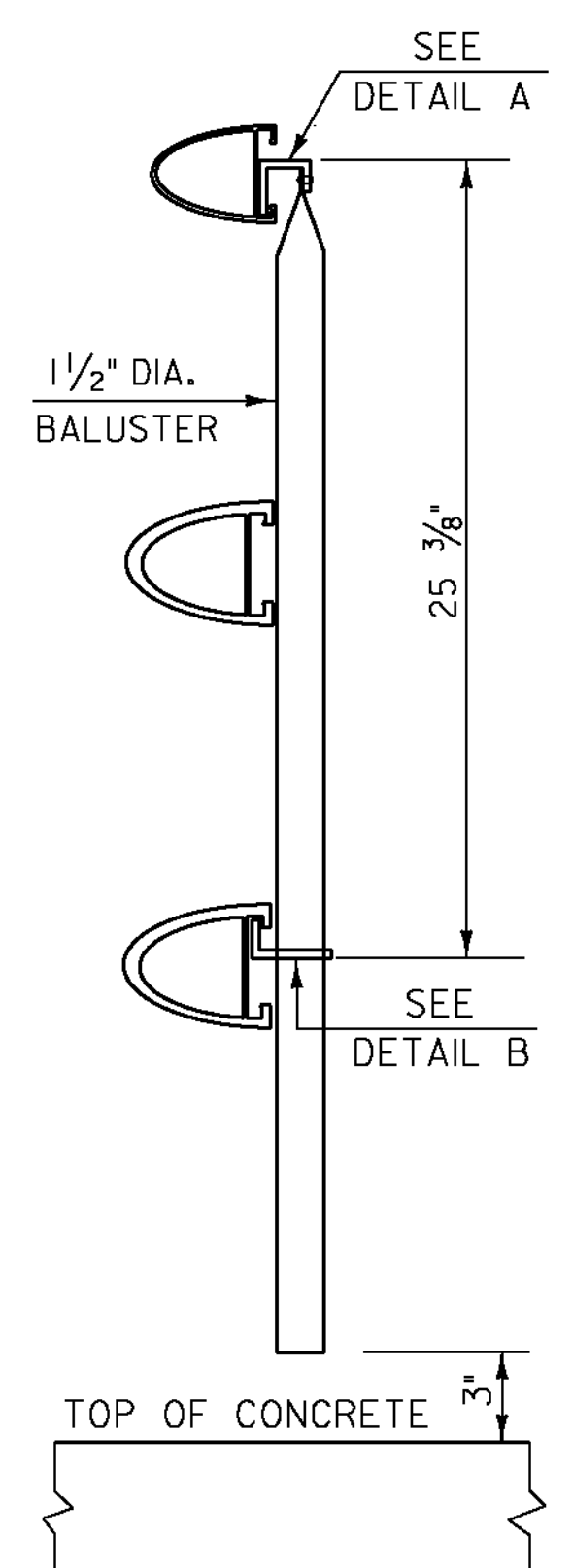
DELINEATION DEVICE DETAILS



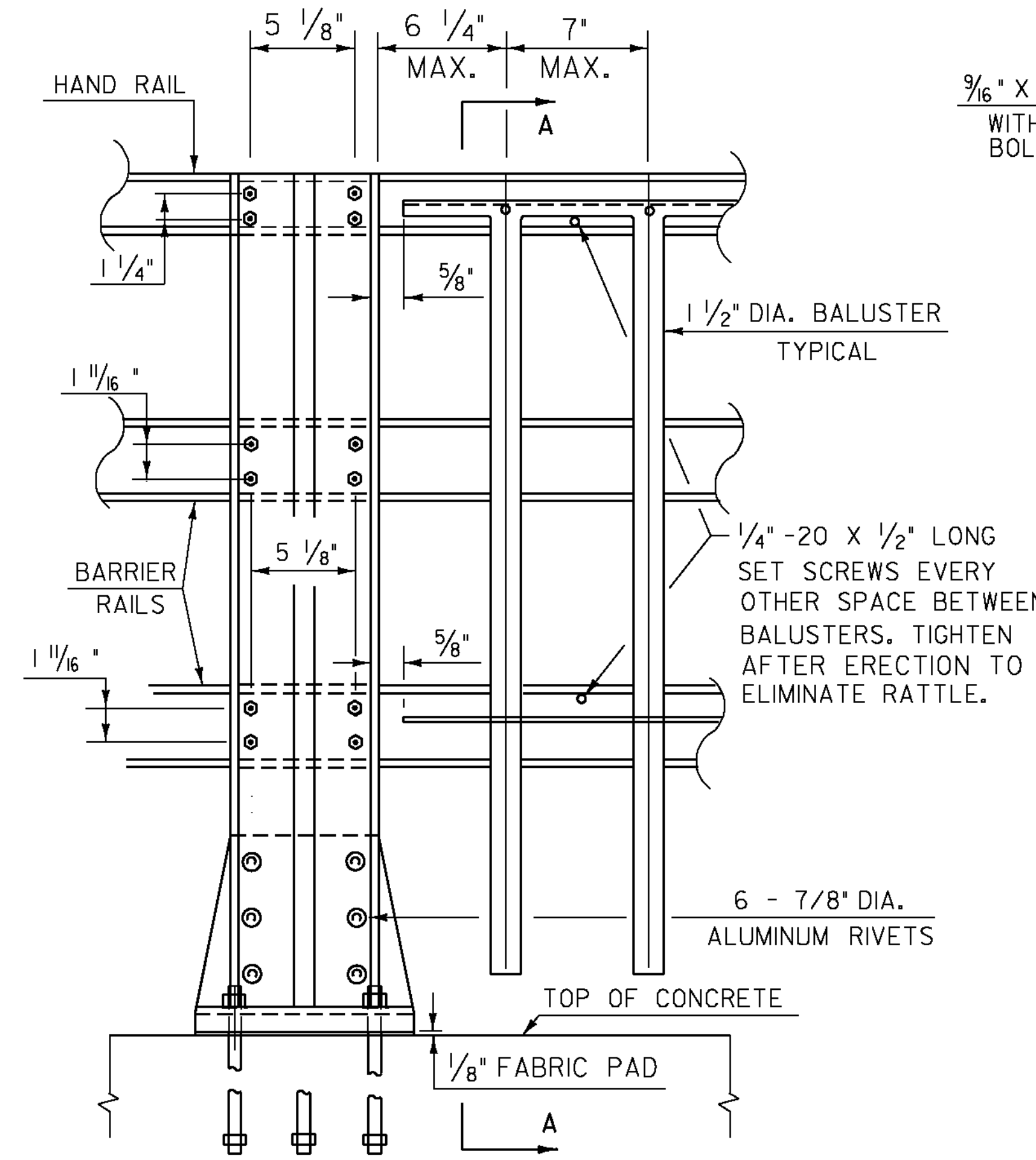
SIDE ELEVATION OF THREE RAIL TO BE USED ON CURB SIDE



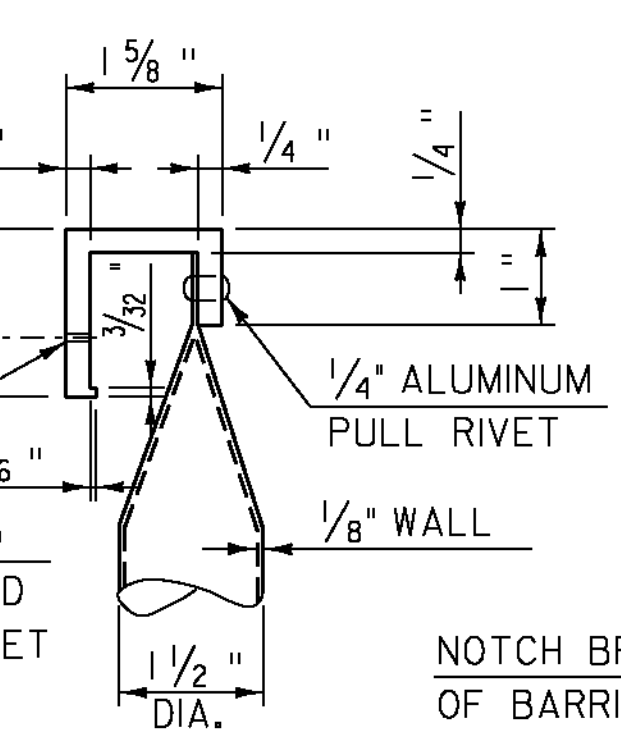
SIDE ELEVATION OF THREE RAIL TO BE USED ON SIDEWALK SIDE



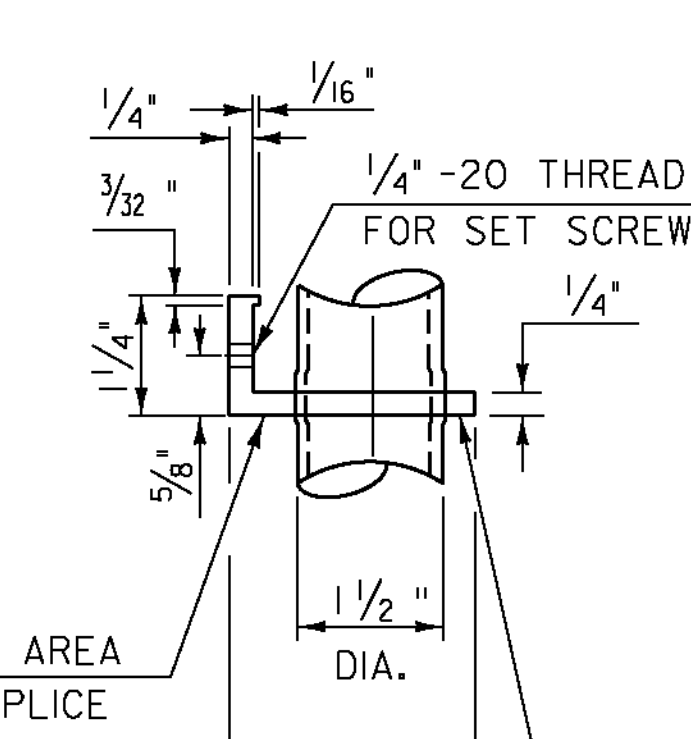
SECTION AA



OUTSIDE ELEVATION OF THREE RAIL POST & SPINDLES

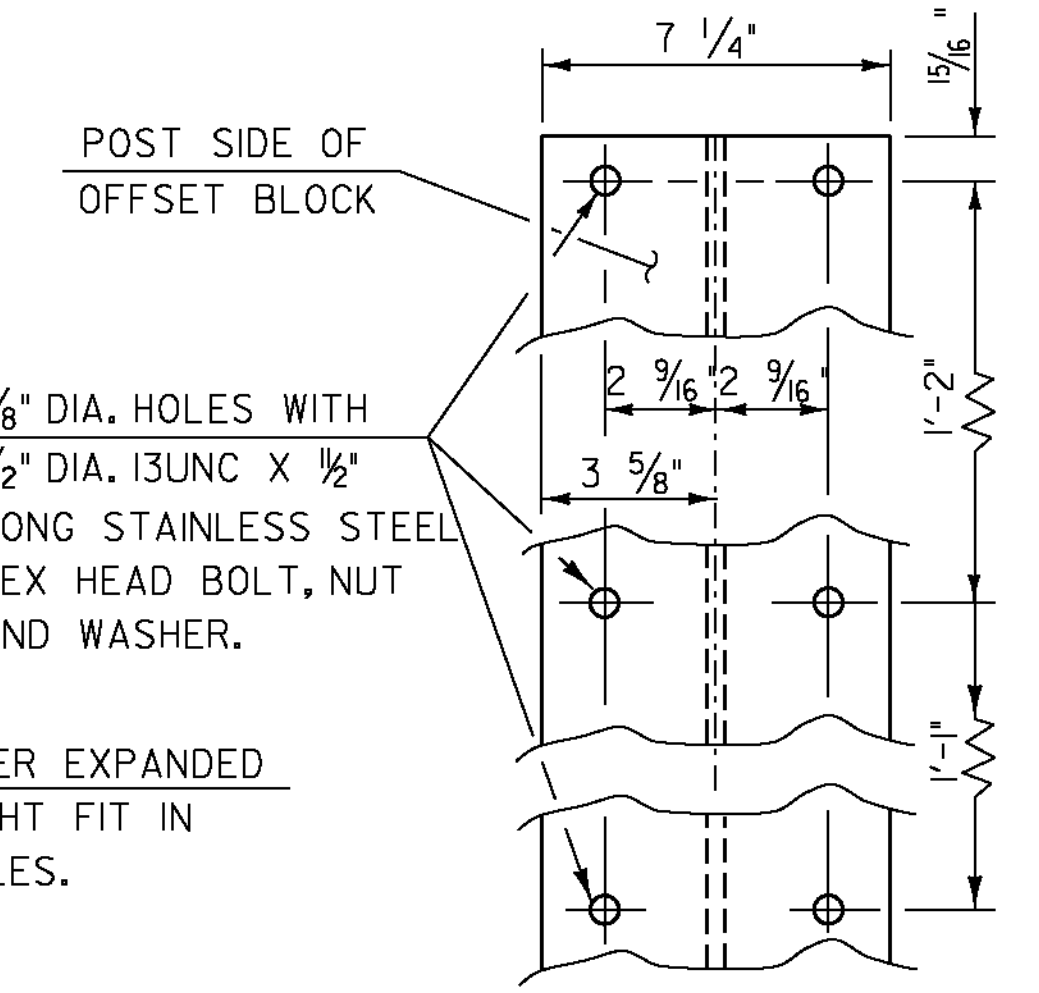


DETAIL A

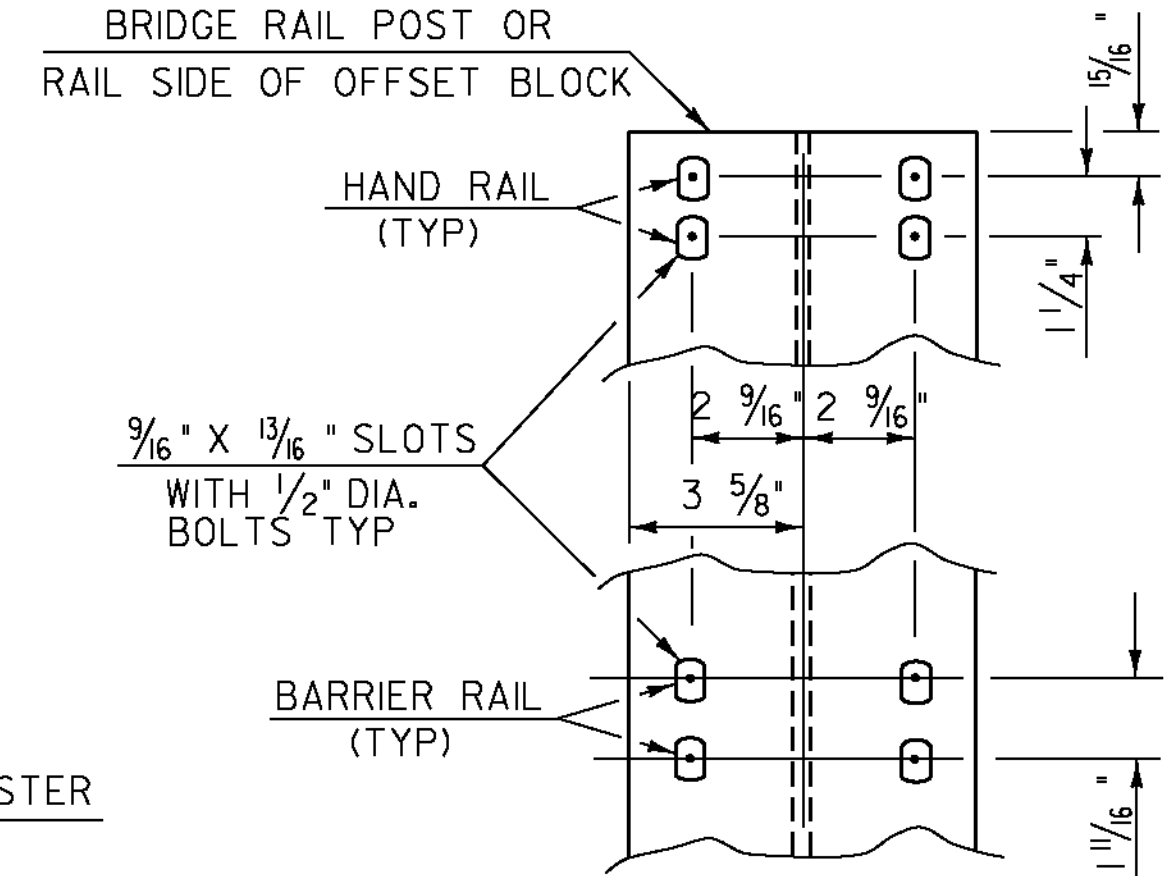


DETAIL B

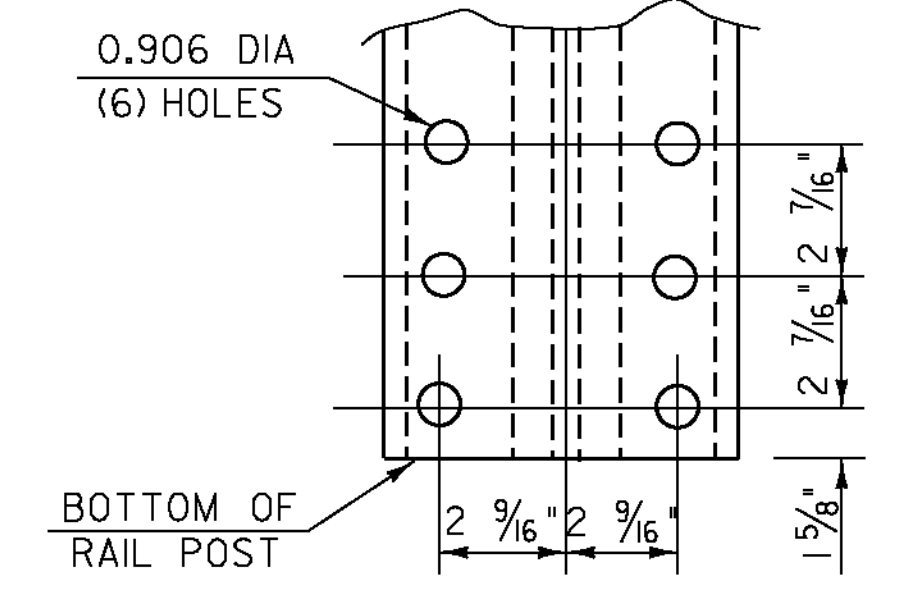
NOTCH BRACKET IN AREA OF BARRIER RAIL SPLICE TO PROVIDE CLEARANCE FOR BOLT HEADS USED IN SPLICE (BRACKET TO BE NOTCHED IN FIELD)



OFFSET BLOCK CONNECTION



RAIL CONNECTION



POST BASE BOLT HOLE DETAILS

ALLOWABLE STRESSES:

RAILING: 21,000 PSI	TENSION
22,000 PSI	COMPRESSION
POSTS: 17,000 PSI	TENSION
19,000 PSI	COMPRESSION

RAIL POST DETAILS ON SUPERSTRUCTURE

DETAILS OF SPINDLES FOR ALUMINUM RAILING

PROJECT NAME: BETHEL
 PROJECT NUMBER: BRF 022-1(14)
 FILE NAME: s78f16ibraill.dgn
 PROJECT LEADER: M. EVANS-MONGEON
 DESIGNED BY: S. SCRIBNER
 BRIDGE RAILING DETAIL SHEET 1
 PLOT DATE: 20-MAY-2011
 DRAWN BY: M. LONGSTREET
 CHECKED BY: S. SCRIBNER
 SHEET 101 OF 148