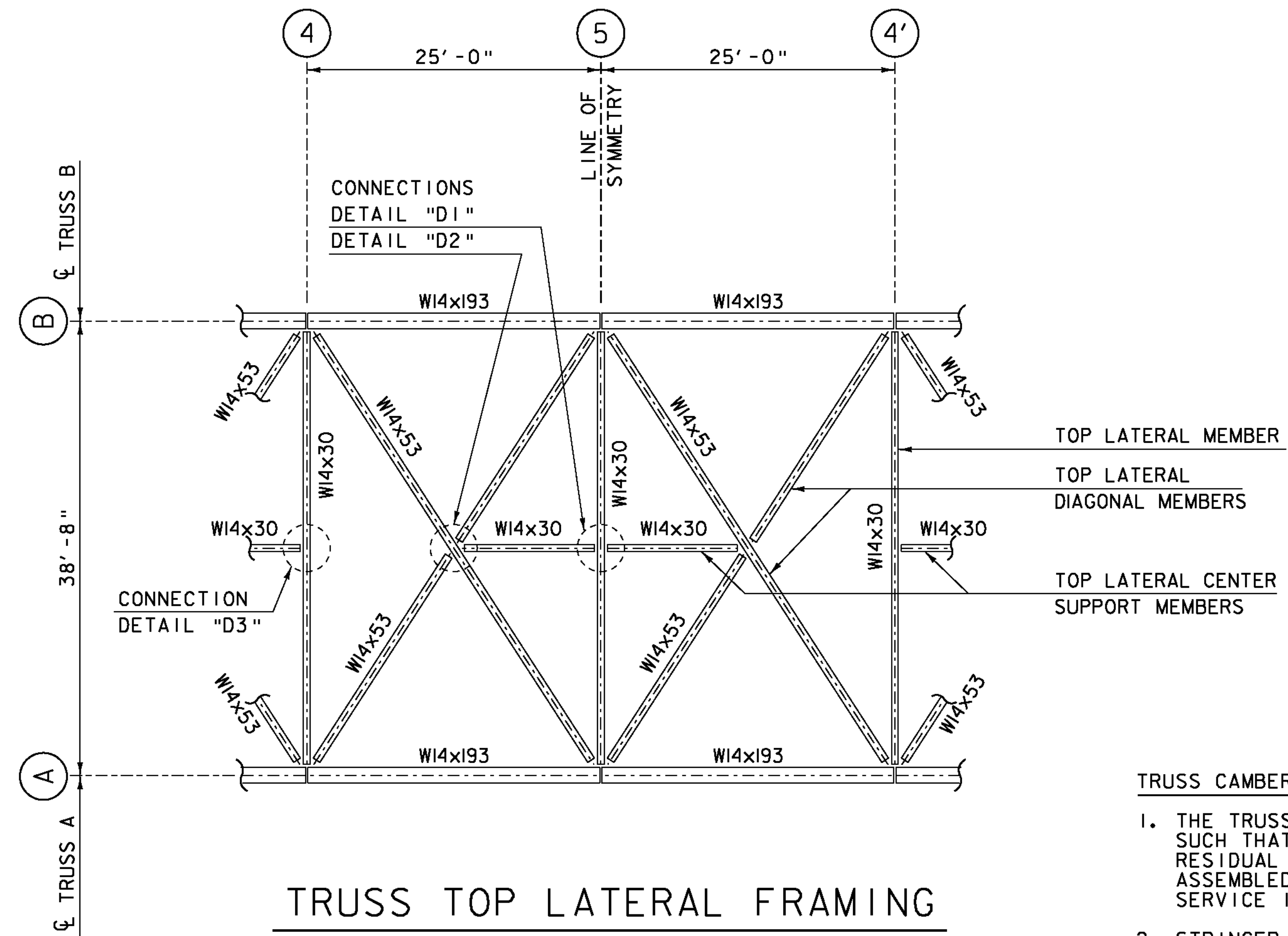


**TRUSS FRAMING DETAIL "1"**

SCALE 1" = 1'-0"



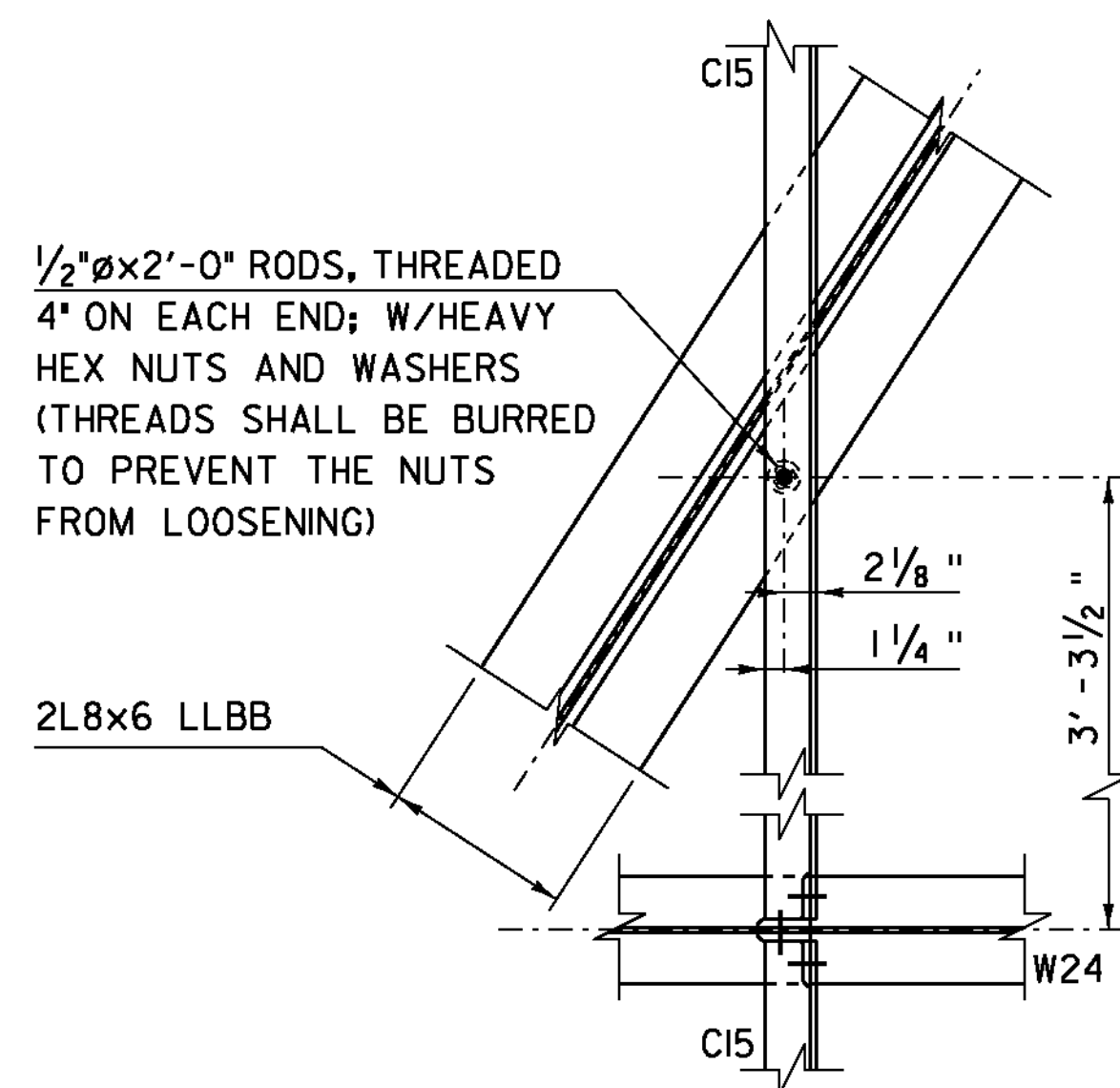
**TRUSS TOP LATERAL FRAMING**

SCALE 1/8" = 1'-0"

**TRUSS CAMBER NOTES:**

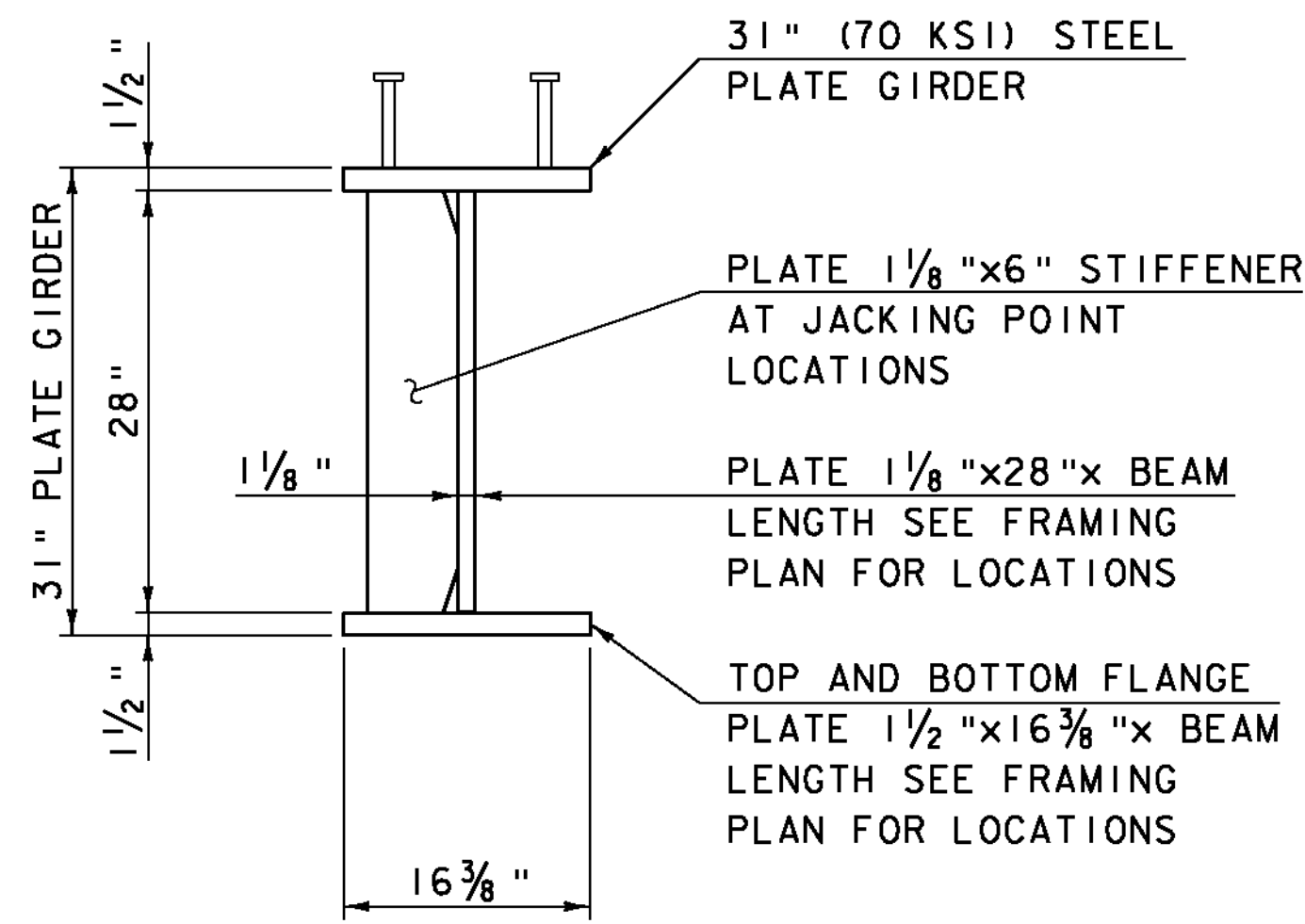
1. THE TRUSS SHALL BE FABRICATED SUCH THAT IT WILL HAVE NO RESIDUAL CAMBER WHEN IN FINAL ASSEMBLED POSITION WITH ALL SERVICE 1 L.S. LOADS APPLIED.
2. STRINGER AND FLOORBEAM MEMBERS SHALL BE CAMBERED AS SHOWN ON "TRUSS FRAMING DETAIL SHEET 3".
3. THE FOLLOWING TABLE PROVIDES ASSUMED SERVICE 1 LIMIT STATE DEFLECTIONS AT EACH OF THE BOTTOM CHORD PANEL POINTS. REFER TO THE TRUSS FRAMING ELEVATION FOR PANEL POINT LOCATIONS.

TRUSS BOTTOM CHORD PANEL POINT SERVICE 1 LIMIT STATE DEFLECTIONS	
PANEL POINT	DEFLECTION
0	0.00 in.
1	1.15 in.
2	1.95 in.
3	2.75 in.
4	3.40 in.
5	3.65 in.
4'	3.40 in.
3'	2.75 in.
2'	1.95 in.
1'	1.15 in.
0'	0.00 in.



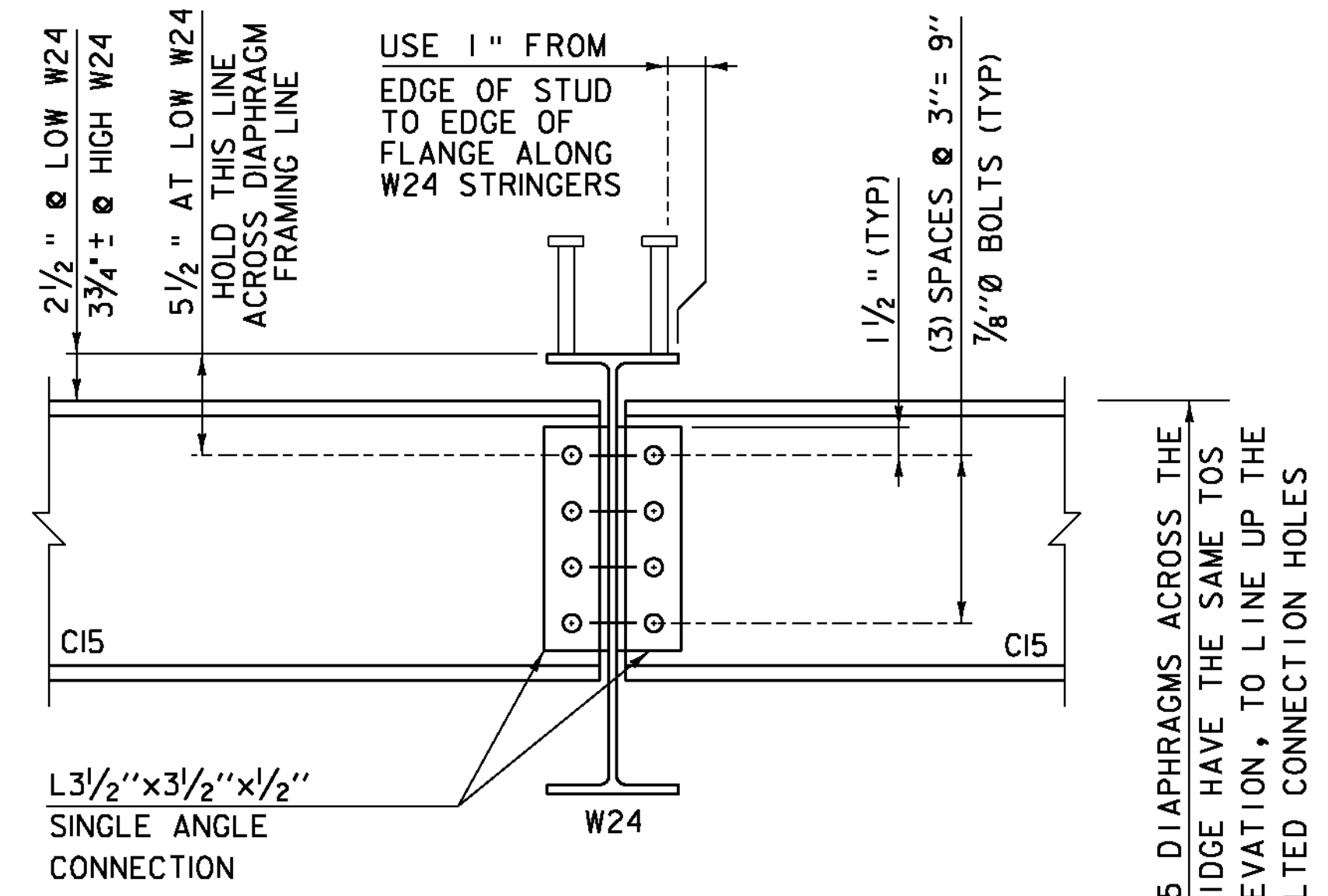
**BRACING HANGER DETAIL**

SCALE 1" = 1'-0"



**31" PLATE GIRDER DETAIL**

SCALE 1" = 1'-0"



**TRUSS FRAMING DETAIL "2"**

SCALE 1/2" = 1'-0"

NOTE: (4) HANGERS REQUIRED FOR EACH DECK HORIZONTAL CROSS BRACING ASSEMBLY, SEE TRUSS FRAMING PLAN FOR BAY SPACING.

TRUSS CONNECTION SECTIONS & DETAILS SHOWN ON TRUSS CONNECTION DETAIL SHEETS 1-7

PROJECT NAME: BETHEL  
 PROJECT NUMBER: BRF 022-1(14)  
 FILE NAME: s78f6itruuss.dgn  
 PROJECT LEADER: M. EVANS-MONGEON  
 DESIGNED BY: S. SCRIBNER  
 TRUSS FRAMING DETAIL SHEET 1  
 PLOT DATE: 20-MAY-2011  
 DRAWN BY: M. LONGSTREET  
 CHECKED BY: T. FILLBACH  
 SHEET 87 OF 148