

A CONTINUOUS STRIP OF 1/16"x3" BUTYL RUBBER TAPE CENTERED ON EACH LINE OF BOLTS TAPE SHALL BE PLACED BETWEEN BOTTOM OF FABRIC AND TOP OF ANGLE. (TYP) TAPE SHALL CONFORM TO SUBSECTION 707.12

7/8" HEAVY HEX NUT FOR EACH 7/8" HEAVY HEX BOLT, WELD NUT ON (3) FACES, ANTI-SEIZE LUBE END OF BOLTS (TYP)

SEE APPROACH & MAIN SPAN CONCRETE DETAIL SHEETS FOR REINFORCING (ADJUST BARS AS SHOWN TO AVOID CONFLICT WITH JOINT ASSEMBLY COMPONENTS (TYPICAL))

1"Ø DRAIN TUBE AT FACE OF CURB ON LOW ENDS

L8x8x1" GRIND OUTSIDE CORNER TO 1/2" RADIUS (TYPICAL)

PREFORMED FABRIC TROUGH 3/32" (3 PLY) W/ DRIP BEAD @ HOPPER

CL BEARING #2 STA 125+47.50 CL BEARING #3 STA 125+50.00

FILL HOLES WITH JOINT SEALER, HOT POURED AFTER BOLT INSTALLATION. PAYMENT INCIDENTAL TO ITEM 516.12 (TYP)

7/8"Ø HIGH STRENGTH (GALV.) BOLTS IN 1"Ø HOLES @ 12" SPACING, ALTERNATE @ 6" W/ ADJACENT BOLTS. COUNTERBORE 2 3/4"Ø x 1" DEEP. COAT BOLT AND NUT THREADS WITH ANTI-SEIZE LUBE.

3" SUPERPAVE BITUMINOUS CONCRETE PAVEMENT

EXP. JOINT CONNECTION BRACKET SEE BRACKET DETAILS THIS SHEET  
1"Ø THREADED ROD WITH (2) HEAVY HEX NUTS AND (2) PLATE WASHERS FOR EACH, (4) EACH BRACKET (TYP)

FINGER JOINT TEMPERATURE RANGE TABLE

TEMP	"A" DIST.
0°F	3 1/8"
15°F	2 7/8"
30°F	2 5/8"
45°F	2 1/2"
60°F	2"
68°F	1 7/8"
75°F	1 3/4"
90°F	1 1/2"
105°F	1 1/4"
120°F	7/8"

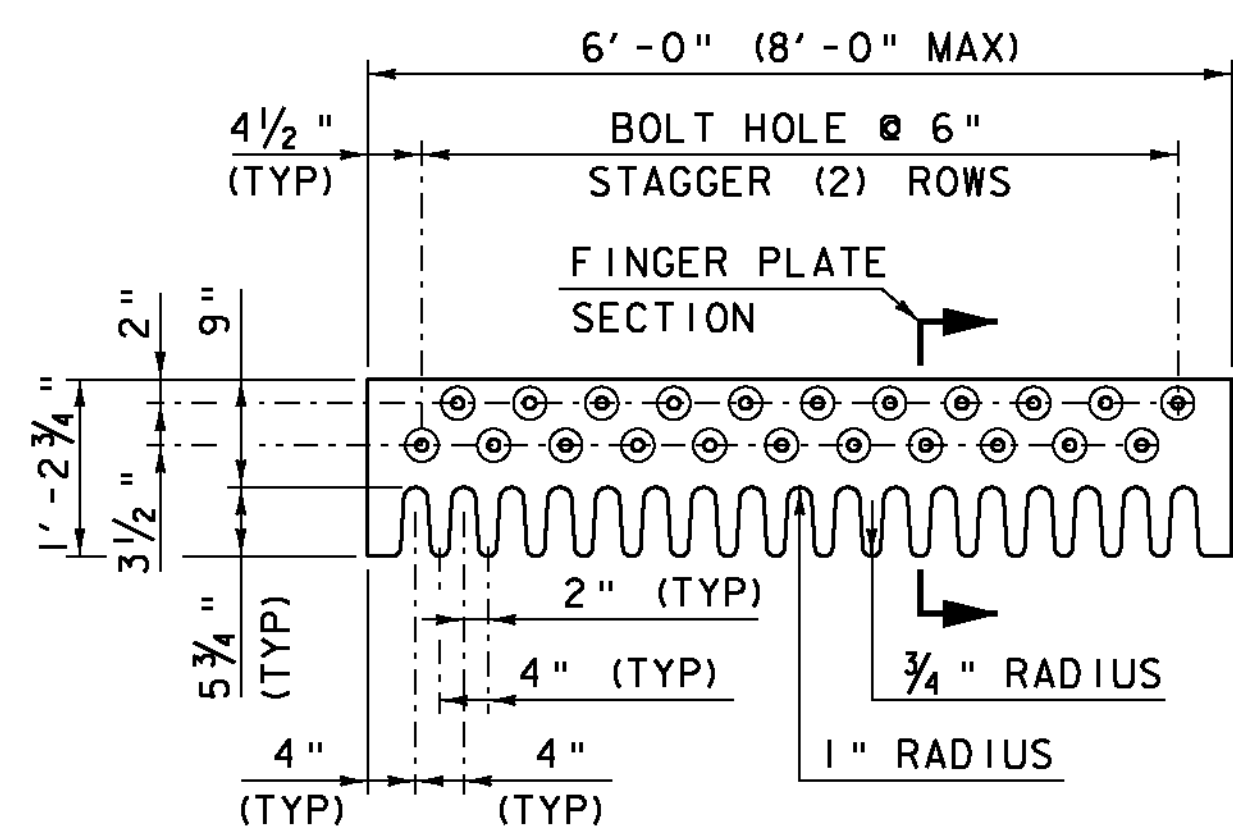
"A" IS THE SETTING BEFORE DEAD LOADS ARE IN PLACE.

### EXPANSION JOINT NOTES

- JOINT DETAILS ARE FOR ITEM 516.12 "BRIDGE EXPANSION JOINT, FINGER PLATE". FABRIC TROUGH SHALL BE THOROUGHLY CLEANED AND FLUSHED AFTER PAVING OPERATION.
- PREFORMED FABRIC MATERIAL SHALL BE CONTINUOUS FROM FOLDED ENDS TO THE DOWN SPOUT DRAINAGE HOPPER. PRIOR TO GALVANIZING OR METALIZING, ALL CORNERS AND EDGES OF STEEL PLATES, SHAPES, ETC., SHALL BE GROUND TO A 1/16" INCH RADIUS.
- THE FINAL FINISH OF THE EXPANSION DEVICE SHALL BE COVERED DURING THE PLACING OF BRIDGE DECK CONCRETE.
- ALL STEEL COMPONENTS SHALL BE GALVANIZED OR METALIZED AND MEET THE REQUIREMENTS OF SUBSECTION 516.02. THREADED RODS SHALL CONFORM TO THE REQUIREMENTS OF SUBSECTION 714.04. THE "BRACKET PLATE WASHER" AND WELDED STUDS MAY BE SUPPLIED WITHOUT GALVANIZING OR METALIZING.
- TEMPORARY SHIPPING ATTACHMENTS SHALL BE ATTACHED BY BOLTING; WELDING WILL NOT BE PERMITTED.
- PROJECTING THREADS OF THE 7/8" BOLTS IN THE JOINT SHALL BE GREASED BY THE CONTRACTOR PRIOR TO PLACING ADJACENT CONCRETE. THIS WILL FACILITATE BOLT REMOVAL IF REQUIRED IN THE FUTURE.
- THE ITEM 516.12 "BRIDGE EXPANSION JOINT, FINGER PLATE" SHALL INCLUDE THE FABRICATION AND ERECTION OF THE COMPLETE JOINT ASSEMBLY INCLUDING ALL STEEL PLATES, BRACKETS, ANGLES, WELDED STUDS OR RODS, PREFORMED FABRIC DRAIN TROUGH MATERIAL AND PLASTIC DRAIN TUBES, BUTYL RUBBER TAPE AND ANY OTHER MISCELLANEOUS MATERIAL NECESSARY TO INSTALL JOINT.
- SEE FINGER JOINT TEMPERATURE RANGE TABLE FOR DISTANCE "A" VALUES.
- FILL COUNTERBORED HOLES WITH HOT POURED JOINT SEALER (STD. SPEC. 707.04) AFTER BOLT INSTALLATION. PAYMENT FOR THE WORK SHALL BE INCIDENTAL TO ITEM 516.12 "BRIDGE EXPANSION JOINT, FINGER PLATE".
- THE EXPANSION JOINT SHALL BE SHOP ASSEMBLED AND SHIPPED AS ONE UNIT. A DRIP BEAD OF 1/4"x7" STRIP OF PREFORMED FABRIC MATERIAL SHALL BE CEMENTED TO THE BOTTOM OF THE FABRIC TROUGH USING AN ADHESIVE APPROVED BY THE MANUFACTURER. THE DRIP BEADS SHALL BE APPLIED 1" FROM THE DOWNSPOUT END CUT-OUT IN EACH TROUGH SECTION.

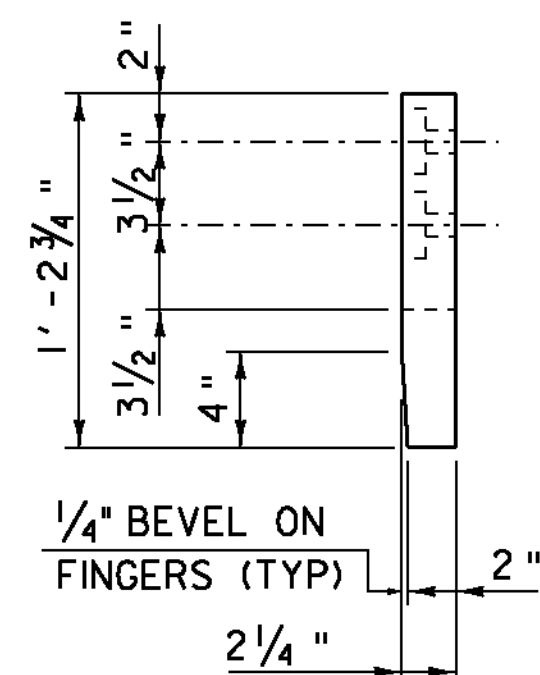
### EXPANSION JOINT TYPICAL SECTION

SCALE 1/2" = 1'-0"



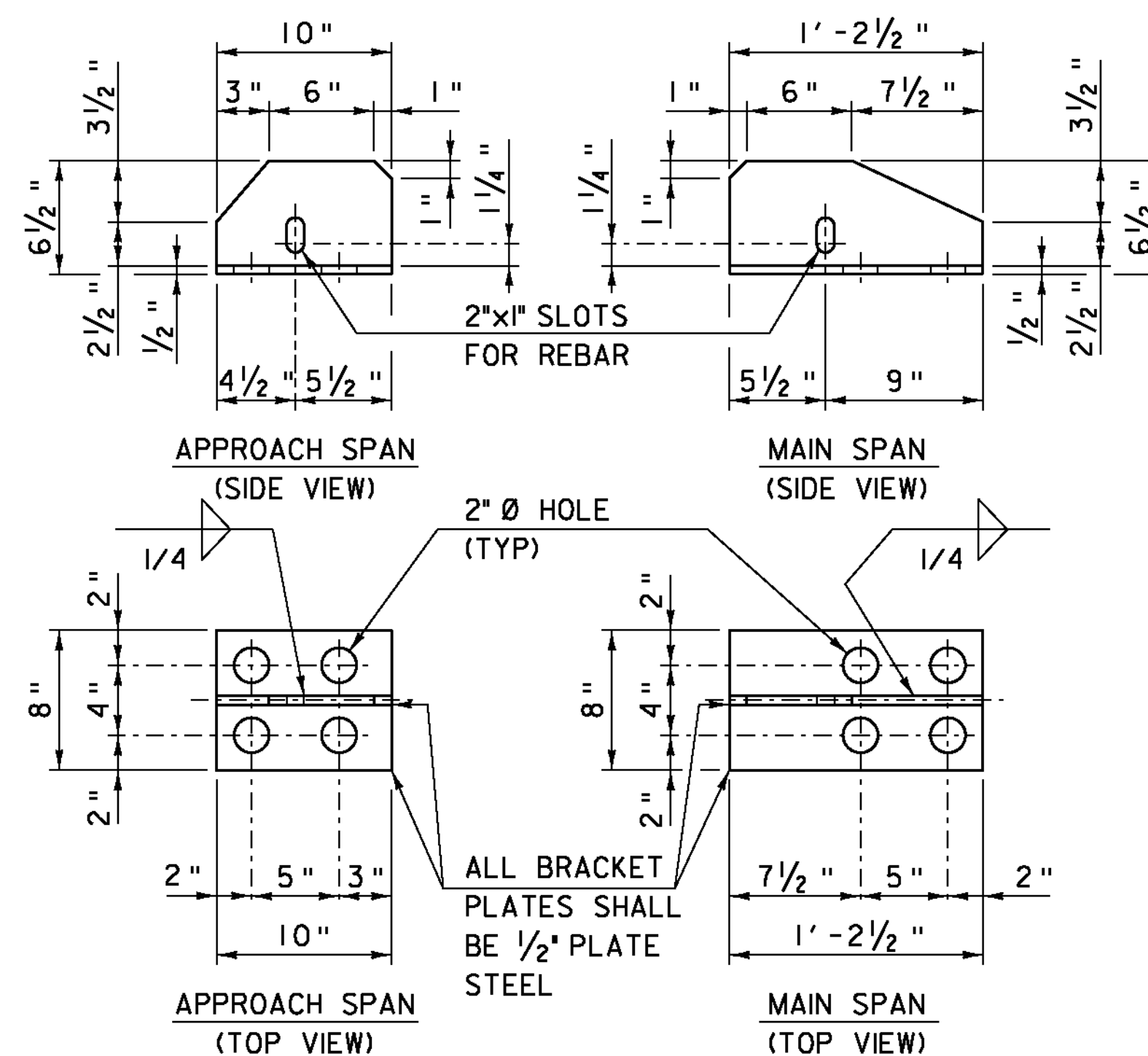
### FINGER PLATE DETAIL

SCALE 3/4" = 1'-0"



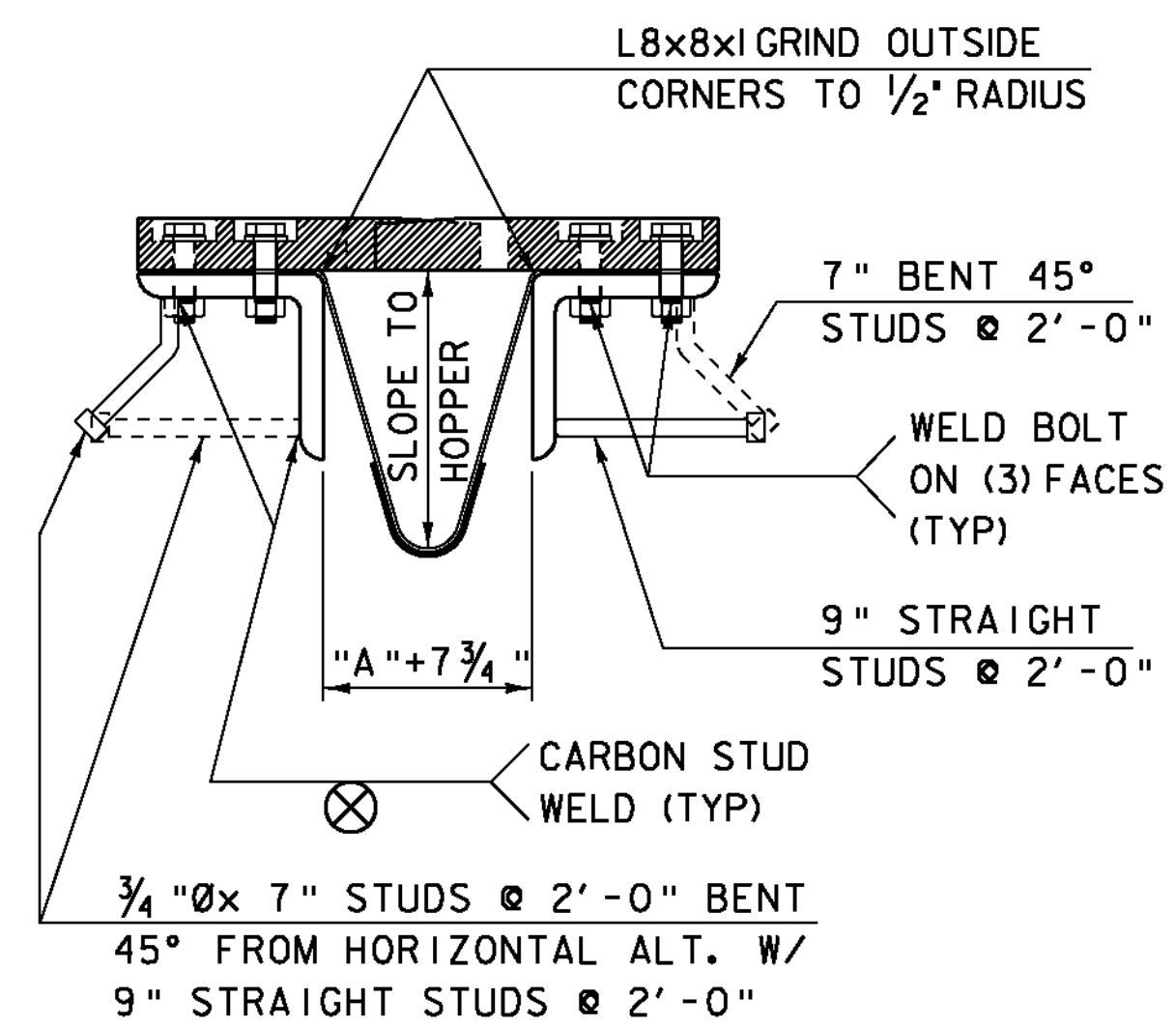
### FINGER PLATE SECTION

SCALE 1 1/2" = 1'-0"



### BRACKET DETAILS

SCALE 1 1/2" = 1'-0"



### JOINT STUD ANCHOR DETAIL

SCALE 1 1/2" = 1'-0"

PROJECT NAME:	BETHEL	PLOT DATE:	20-MAY-2011	
PROJECT NUMBER:	BRF 022-(14)	DRAWN BY:	M. LONGSTREET	
FILE NAME:	s78f161sup.dgn	DESIGNED BY:	S. SCRIBNER	
PROJECT LEADER:	M. EVANS-MONGEON	EXPANSION JOINT DETAIL SHEET 1	CHECKED BY:	S. SCRIBNER
			SHEET	82 OF 148