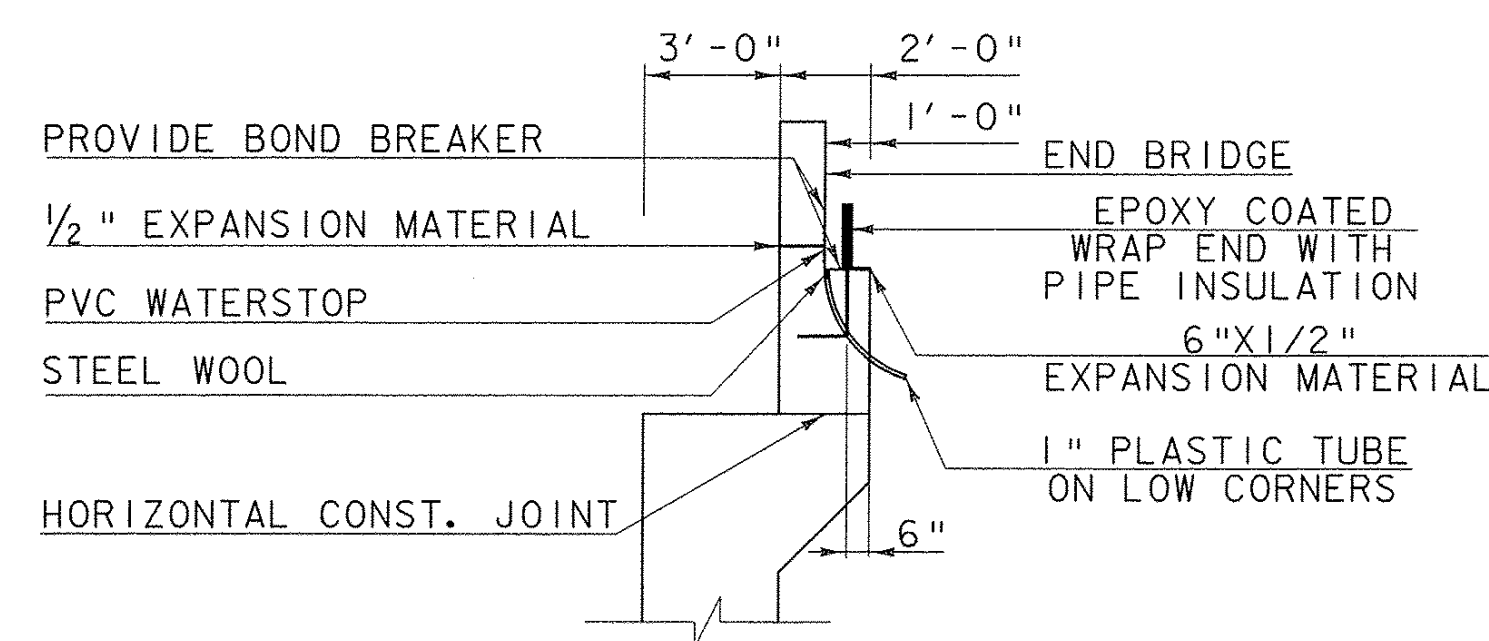
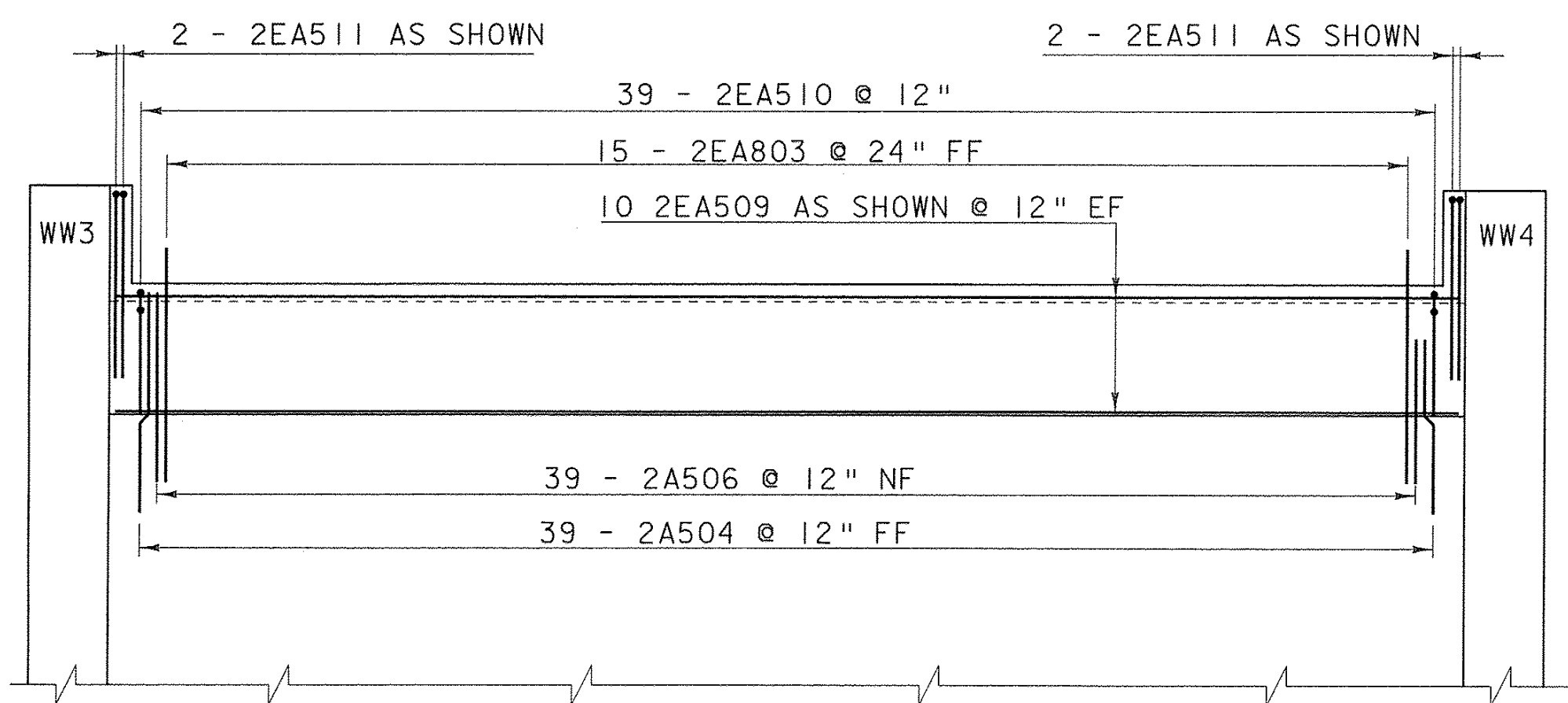


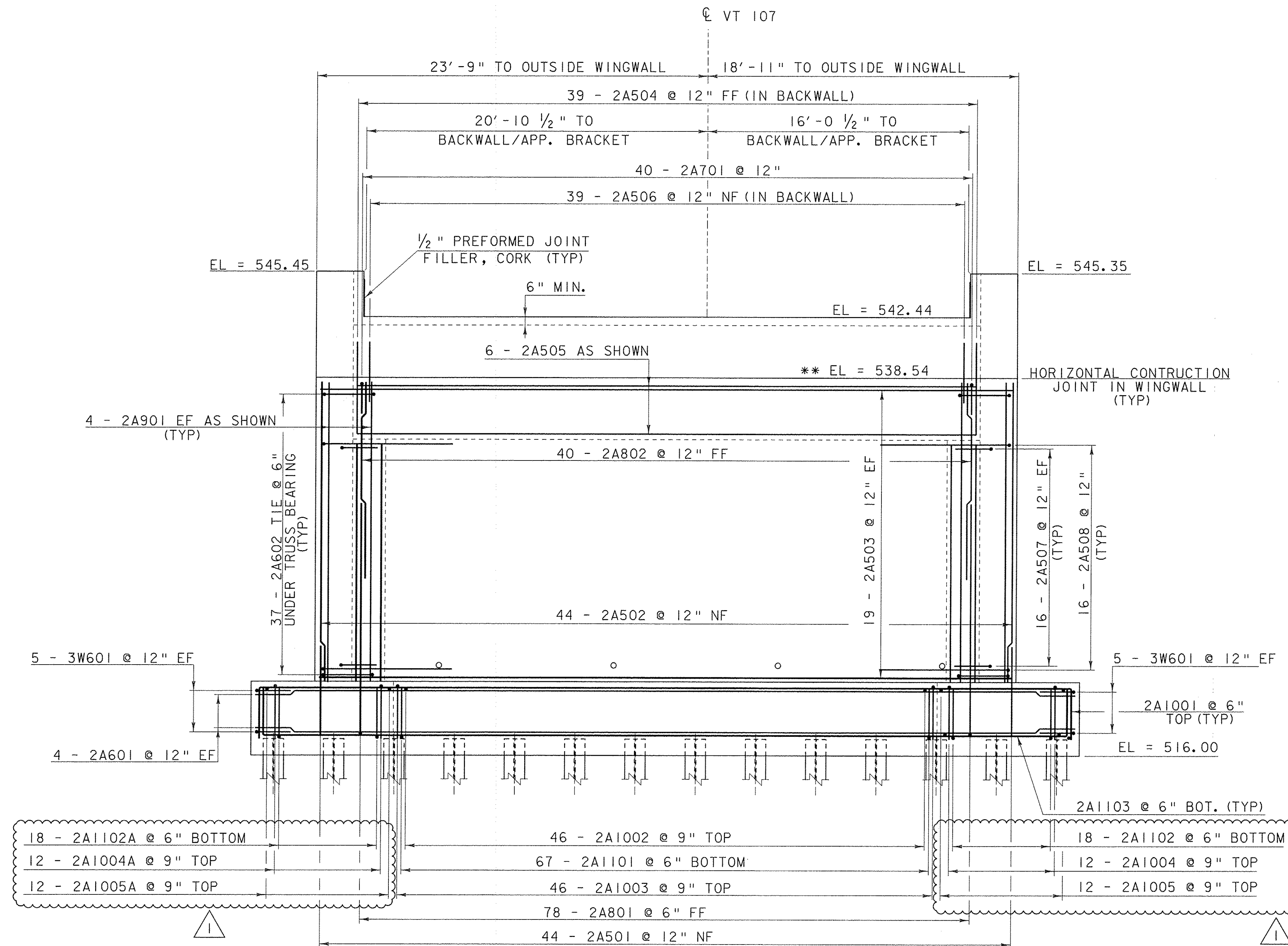
**ABUTMENT #2 BACKWALL TYPICAL REINFORCING LAYOUT**  
SCALE 1/4" = 1'-0"



**ABUTMENT #2 BACKWALL TYPICAL**  
SCALE 1/4" = 1'-0"



**ABUTMENT #2 BACKWALL ELEVATION**  
SCALE 1/4" = 1'-0"



**ABUTMENT #2 ELEVATION VIEW**  
SCALE 1/4" = 1'-0"

\*\* THESE ELEVATIONS MAY HAVE TO BE ADJUSTED TO ACCOMMODATE THE ACTUAL BEARINGS FURNISHED. IT IS THE RESPONSIBILITY OF THE CONTRACTOR TO COORDINATE ANY CHANGES IN THE BEARINGS WHICH MAY AFFECT THE BEARING SEAT ELEVATIONS.

**NOTE:**

- NF = NEAR FACE
- FF = FAR FACE
- EF = EACH FACE
- ▲ = CUT TO FIT IN FIELD
- 3" CLEAR, UNLESS OTHERWISE SPECIFIED ON THE PLANS.
- 2'-2" BAR LAP UNLESS OTHERWISE SPECIFIED ON THE PLANS.

REVISION	DATE	DESCRIPTION	BY
1	01-27-2012	MODIFY WW3 FTG, REMOVE (4) PILES, RELOCATE PILE #3, CANTILEVER WW3	MCL

PROJECT NAME: BETHEL  
PROJECT NUMBER: BRP 022-1(I4)

FILE NAME: s78f161sub2.dgn  
PROJECT LEADER: M. EVANS-MONGEON  
DESIGNED BY: S. SCRIBNER  
ABUTMENT #2 ELEVATION & DETAILS

PLOT DATE: 30-JAN-2012  
DRAWN BY: S. SCRIBNER  
CHECKED BY: S. SCRIBNER  
SHEET 67 OF 148