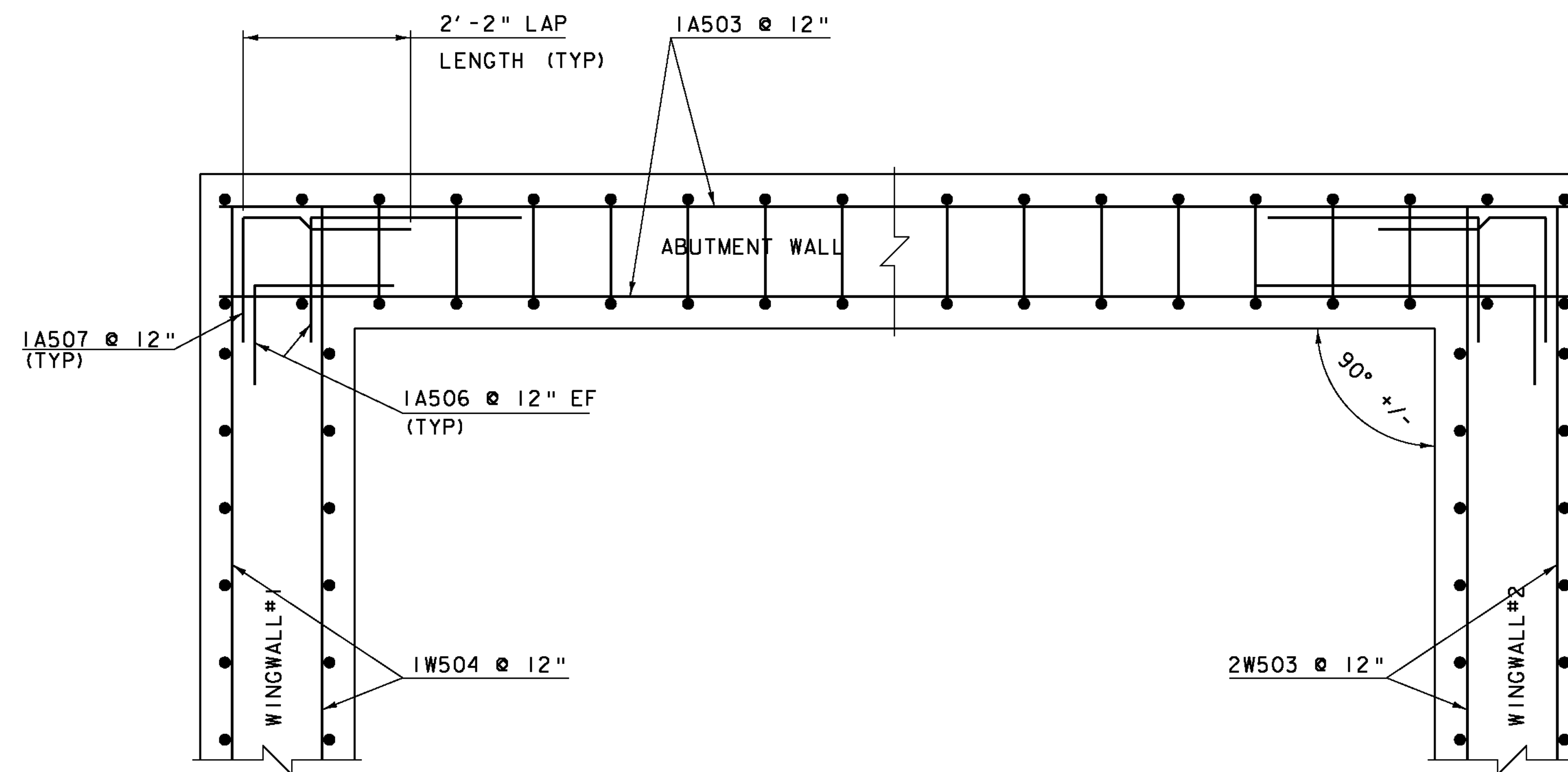


WINGWALL # 2 ELEVATION (CURVED)

SCALE 1/4" = 1'-0"

- I. TOP OF WW#2 ELEVATION FOLLOWS THE RIGHT SHOULDER OUT SIDE EDGE FINISH GRADE ELEVATION +7". THE WALL ELEVATION IS 3 5/8" ABOVE ROAD CENTER LINE ELEVATION, EXCEPT FOR THE 10'-0" TRANSITION FROM 10" CURB ON THE BRIDGE TO 7" CURB IN THE TYPICAL SECTION. SEE STATION OFFSET REPORT ON THE WINGWALL TYPICALS SHEET.



TYPICAL WINGWALL 1&2 CORNER DETAIL BELOW BRIDGE SEAT

SCALE 3/4" = 1'-0"

••REFER TO CONCRETE SECTION OF GENERAL NOTES REGARDING CONSTRUCTION JOINT LOCATED AT ELEVATION 538.31 FOR ABUTMENT#1

NOTE:

- NF = NEAR FACE
- FF = FAR FACE
- EF = EACH FACE
- ▲ = CUT TO FIT IN FIELD
- 3" CLEAR, UNLESS OTHERWISE SPECIFIED ON THE PLANS.
- 2'-2" BAR LAP UNLESS OTHERWISE SPECIFIED ON THE PLANS.

PROJECT NAME: BETHEL
PROJECT NUMBER: BRP 022-1(14)

FILE NAME: s78f161sub1.dgn
PROJECT LEADER: M. EVANS-MONGEON
DESIGNED BY: N. VANDENBERG
WINGWALL #2 ELEVATION & DETAILS

PLOT DATE: 20-MAY-2011
DRAWN BY: M. LONGSTREET
CHECKED BY: S. SCRIBNER
SHEET 63 OF 148