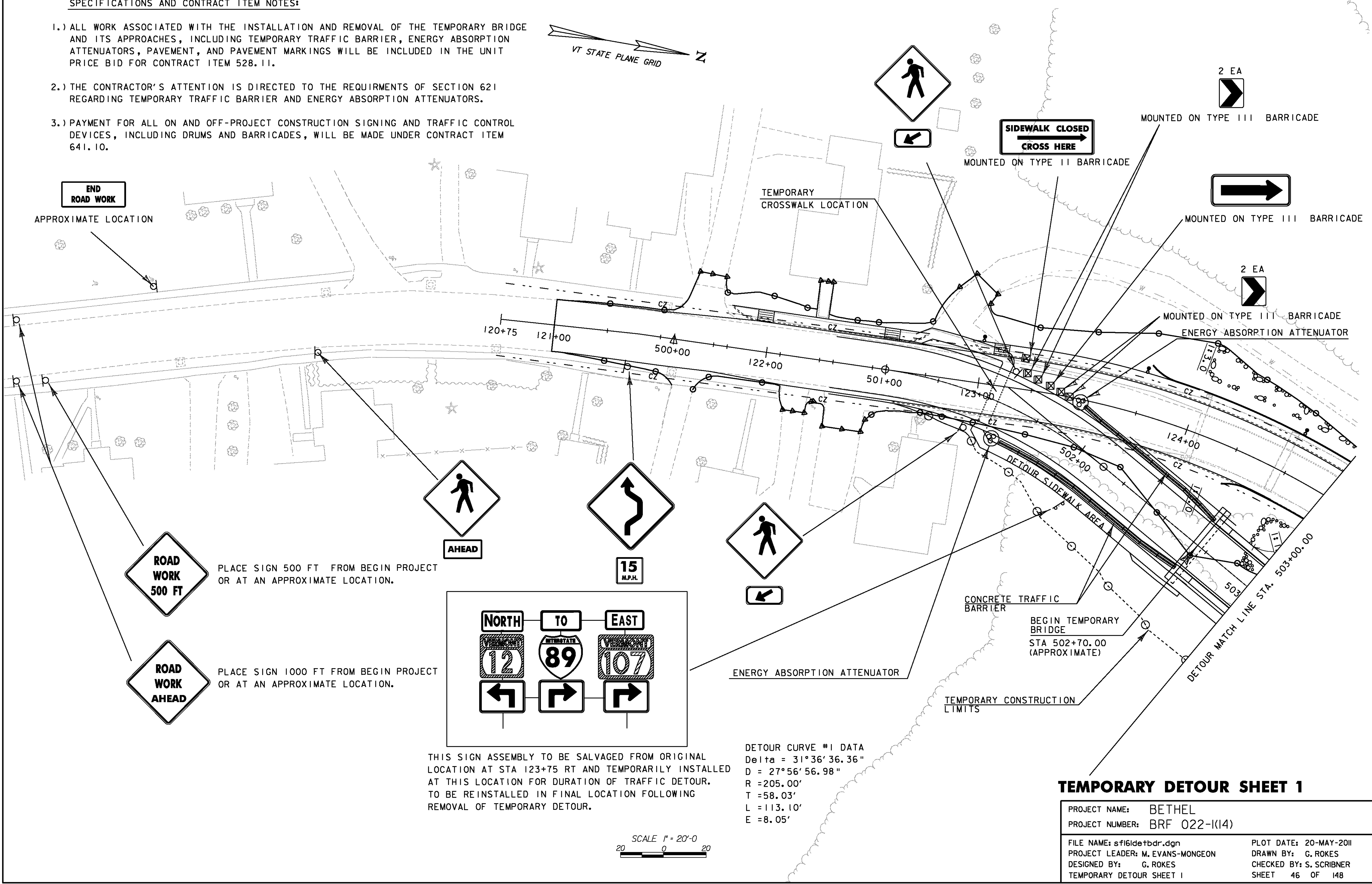
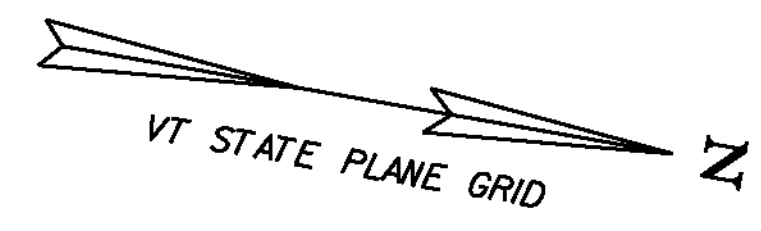


**SPECIFICATIONS AND CONTRACT ITEM NOTES:**

- 1.) ALL WORK ASSOCIATED WITH THE INSTALLATION AND REMOVAL OF THE TEMPORARY BRIDGE AND ITS APPROACHES, INCLUDING TEMPORARY TRAFFIC BARRIER, ENERGY ABSORPTION ATTENUATORS, PAVEMENT, AND PAVEMENT MARKINGS WILL BE INCLUDED IN THE UNIT PRICE BID FOR CONTRACT ITEM 528.11.
- 2.) THE CONTRACTOR'S ATTENTION IS DIRECTED TO THE REQUIRMENTS OF SECTION 621 REGARDING TEMPORARY TRAFFIC BARRIER AND ENERGY ABSORPTION ATTENUATORS.
- 3.) PAYMENT FOR ALL ON AND OFF-PROJECT CONSTRUCTION SIGNING AND TRAFFIC CONTROL DEVICES, INCLUDING DRUMS AND BARRICADES, WILL BE MADE UNDER CONTRACT ITEM 641.10.



**END ROAD WORK**

APPROXIMATE LOCATION

**ROAD WORK 500 FT**

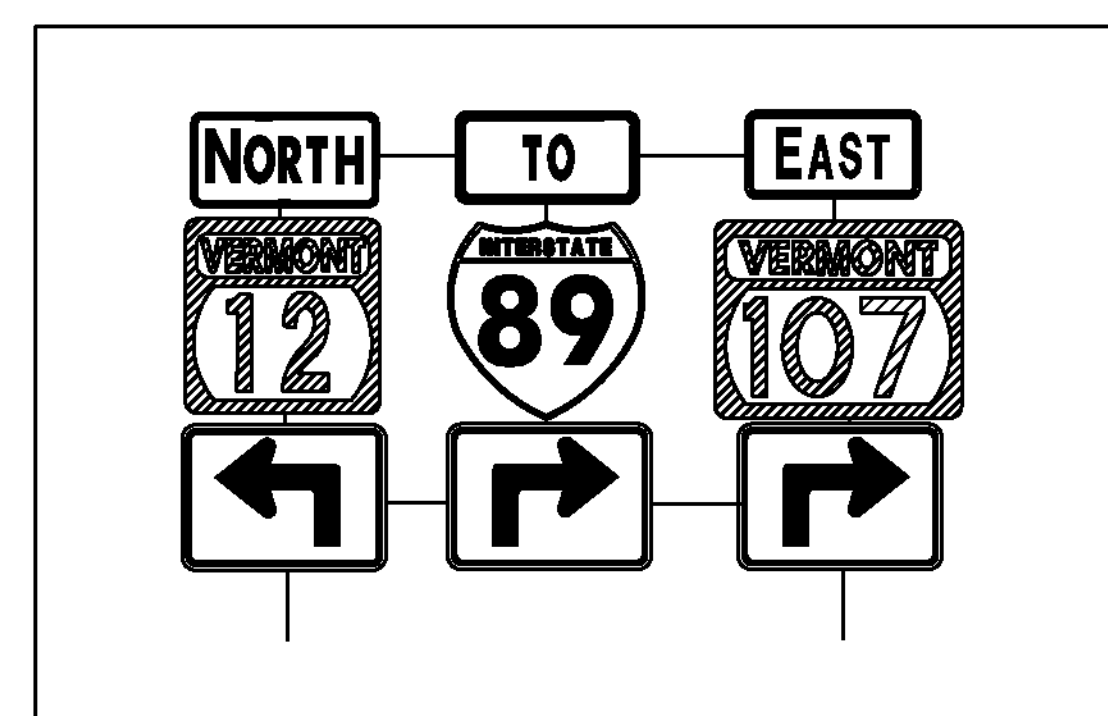
PLACE SIGN 500 FT FROM BEGIN PROJECT OR AT AN APPROXIMATE LOCATION.

**ROAD WORK AHEAD**

PLACE SIGN 1000 FT FROM BEGIN PROJECT OR AT AN APPROXIMATE LOCATION.

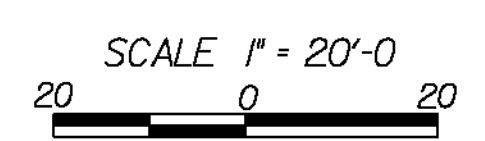
**AHEAD**

**15 M.P.H.**



THIS SIGN ASSEMBLY TO BE SALVAGED FROM ORIGINAL LOCATION AT STA 123+75 RT AND TEMPORARILY INSTALLED AT THIS LOCATION FOR DURATION OF TRAFFIC DETOUR. TO BE REINSTALLED IN FINAL LOCATION FOLLOWING REMOVAL OF TEMPORARY DETOUR.

DETOUR CURVE #1 DATA  
 Delta = 31°36'36.36"  
 D = 27°56'56.98"  
 R = 205.00'  
 T = 58.03'  
 L = 113.10'  
 E = 8.05'



**TEMPORARY DETOUR SHEET 1**

PROJECT NAME:	BETHEL	PLOT DATE:	20-MAY-2011
PROJECT NUMBER:	BRF 022-1(14)	DRAWN BY:	G. ROKES
FILE NAME:	sf16idetbdr.dgn	CHECKED BY:	S. SCRIBNER
PROJECT LEADER:	M. EVANS-MONGEON	SHEET	46 OF 148
DESIGNED BY:	G. ROKES		
TEMPORARY DETOUR SHEET 1			