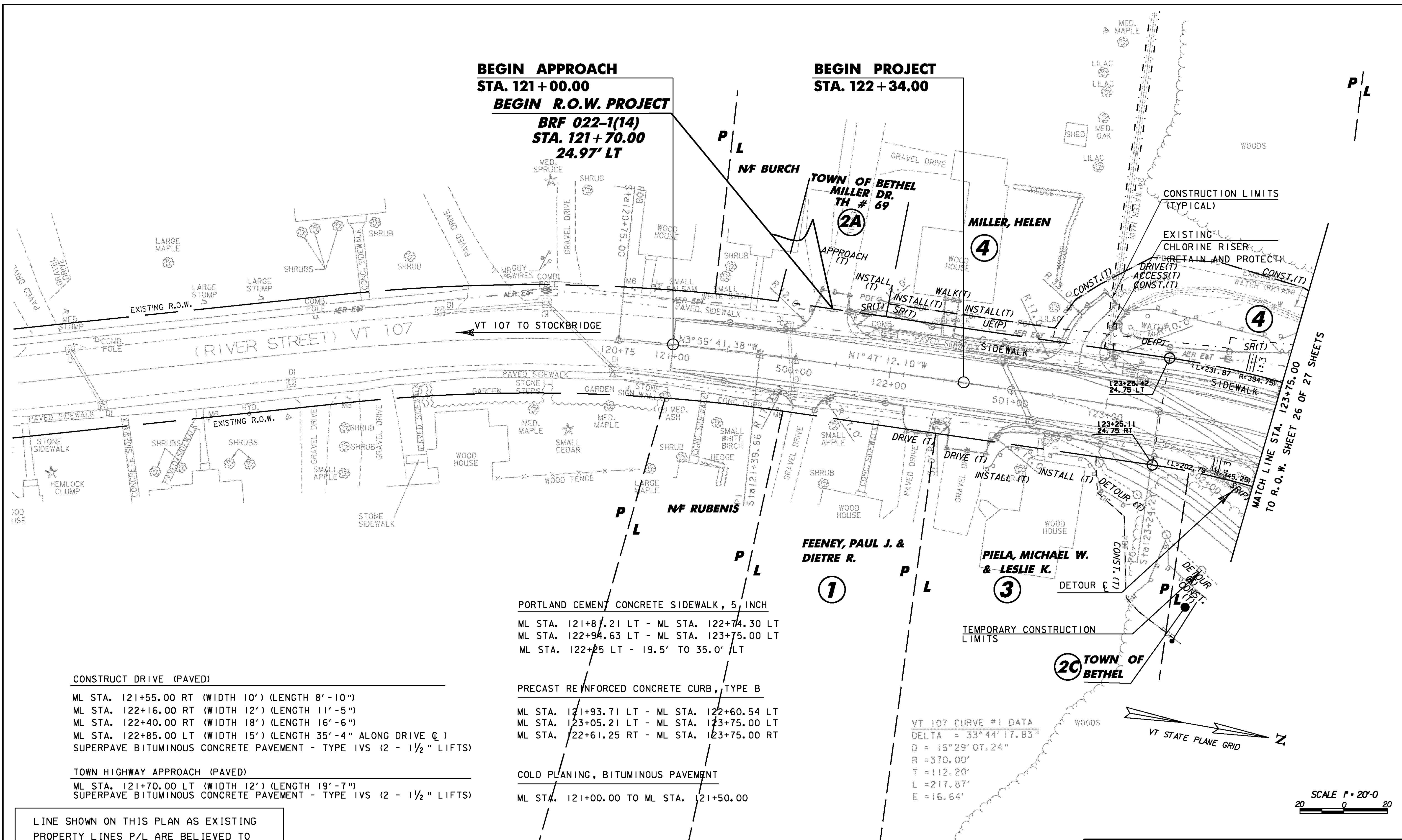


BEGIN APPROACH
STA. 121+00.00
BEGIN R.O.W. PROJECT
BRF 022-1(14)
STA. 121+70.00
24.97' LT

BEGIN PROJECT
STA. 122+34.00



P/L

MATCH LINE STA. 123+75.00
 TO R.O.W. SHEET 26 OF 27 SHEETS

PORTLAND CEMENT CONCRETE SIDEWALK, 5 INCH
 ML STA. 121+87.21 LT - ML STA. 122+74.30 LT
 ML STA. 122+94.63 LT - ML STA. 123+75.00 LT
 ML STA. 122+25 LT - 19.5' TO 35.0' LT

PRECAST REINFORCED CONCRETE CURB, TYPE B
 ML STA. 121+93.71 LT - ML STA. 122+60.54 LT
 ML STA. 123+05.21 LT - ML STA. 123+75.00 LT
 ML STA. 122+61.25 RT - ML STA. 123+75.00 RT

COLD PLANING, BITUMINOUS PAVEMENT
 ML STA. 121+00.00 TO ML STA. 121+50.00

VT 107 CURVE #1 DATA
 DELTA = 33°44'17.83"
 D = 15°29'07.24"
 R = 370.00'
 T = 112.20'
 L = 217.87'
 E = 16.64'

CONSTRUCT DRIVE (PAVED)
 ML STA. 121+55.00 RT (WIDTH 10') (LENGTH 8'-10")
 ML STA. 122+16.00 RT (WIDTH 12') (LENGTH 11'-5")
 ML STA. 122+40.00 RT (WIDTH 18') (LENGTH 16'-6")
 ML STA. 122+85.00 LT (WIDTH 15') (LENGTH 35'-4" ALONG DRIVE C)
 SUPERPAVE BITUMINOUS CONCRETE PAVEMENT - TYPE IVS (2 - 1 1/2" LIFTS)

TOWN HIGHWAY APPROACH (PAVED)
 ML STA. 121+70.00 LT (WIDTH 12') (LENGTH 19'-7")
 SUPERPAVE BITUMINOUS CONCRETE PAVEMENT - TYPE IVS (2 - 1 1/2" LIFTS)

LINE SHOWN ON THIS PLAN AS EXISTING
 PROPERTY LINES P/L ARE BELIEVED TO
 BE ACCURATE BUT SHOULD NOT BE RELIED
 UPON FOR PURPOSES UNRELATED TO THE
 STATE OF VERMONT'S ACQUISITION OF LAND
 AND RIGHTS FOR THIS PROJECT.

**FOR R.O.W.
 USE ONLY**

PROJECT NAME: BETHEL
 PROJECT NUMBER: BRF 022-1(14)
 FILE NAME: sf161bdrrow.dgn
 PROJECT LEADER: M. EVANS-MONGEON
 DESIGNED BY: S. SCRIBNER
 ROW LAYOUT SHEET 1

PLOT DATE: 20-MAY-2011
 DRAWN BY: G. ROKES
 CHECKED BY: S. SCRIBNER
 SHEET 30 OF 148

