

PORTLAND CEMENT CONCRETE SIDEWALK, 5 INCH
 STAIR STA. 0+00.00 - 0+21.83, ML STA. 128+50 LT
 (SEE TOWN STAIRCASE SHEET)
 STAIR STA. 0+34.17 - 0+47.75, ML STA. 128+50 LT
 (SEE TOWN STAIRCASE SHEET)
 ML STA. 123+75.00 LT - 124+79.00 LT
 ML STA. 128+02.50 LT - 128+41.23 LT
 ML STA. 128+64.73 LT - 129+00.00 LT
 ML STA. 128+85.00 RT - 15.0' TO 77.0' RT

METAL HAND RAILING
 STAIR STA. 0+21.83 TO 0+34.17, (ML STA. 128+50 RT)
 (HAND RAIL EACH SIDE OF STAIR SEE STD J-2)
 AND SEE (TOWN STAIRCASE SHEET)

CONCRETE, HIGH PERFORMANCE CLASS B (CONCRETE STAIRS)
 STAIR STA. 0+21.83 TO 0+34.17, (ML STA. 128+50 RT)
 SEE (TOWN STAIRCASE SHEET)

PORTLAND CEMENT CONCRETE SIDEWALK, 8 INCH
 CONSTRUCT DRIVE
 STATION WIDTH/OFFSET FROM SHOULDER
 ML STA. 128+53.00 LT 24.0 FT / 24.0 FT

BRIDGE RAILING, ALUMINUM/PEDESTRIAN
 ML STA. 123+99.33 LT - 128+02.25 LT

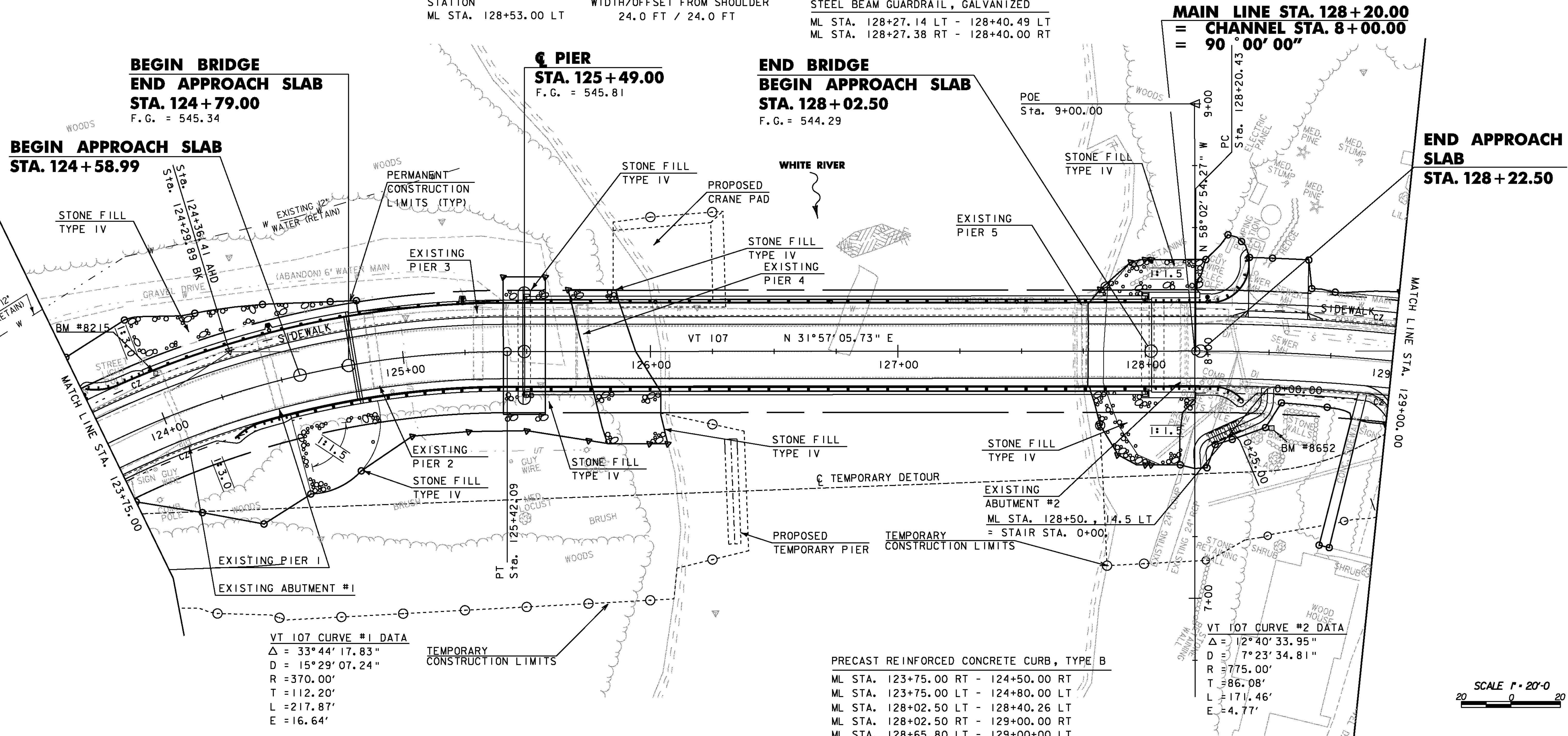
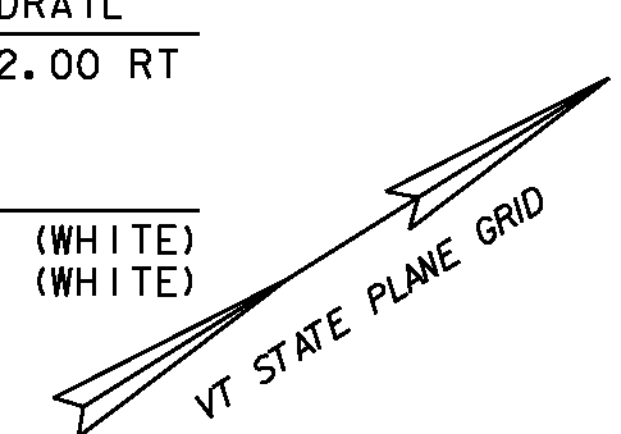
BRIDGE RAILING, 3 RAIL ALUMINUM
 ML STA. 124+50.26 RT - 128+02.25 RT

ALUMINUM APPROACH RAILING
 ML STA. 123+76.52 LT - 123+99.33 LT
 ML STA. 124+24.76 RT - 124+50.26 RT
 ML STA. 128+02.25 RT - 128+27.38 RT
 ML STA. 128+02.25 LT - 128+27.14 LT

STEEL BEAM GUARDRAIL, GALVANIZED
 ML STA. 128+27.14 LT - 128+40.49 LT
 ML STA. 128+27.38 RT - 128+40.00 RT

REMOVAL AND DISPOSAL OF GUARDRAIL
 ML STA. 123+75.00 RT - 124+02.00 RT

DELINEATOR WITH STEEL POST
 ML STA. 125+96.00 21'-2" RT (WHITE)
 ML STA. 128+01.00 35'-4" RT (WHITE)



**BEGIN BRIDGE
 END APPROACH SLAB
 STA. 124+79.00**
 F.G. = 545.34

**BEGIN APPROACH SLAB
 STA. 124+58.99**

**PIER
 STA. 125+49.00**
 F.G. = 545.81

**END BRIDGE
 BEGIN APPROACH SLAB
 STA. 128+02.50**
 F.G. = 544.29

**END APPROACH SLAB
 STA. 128+22.50**

VT 107 CURVE #1 DATA
 $\Delta = 33^\circ 44' 17.83''$
 $D = 15^\circ 29' 07.24''$
 $R = 370.00'$
 $T = 112.20'$
 $L = 217.87'$
 $E = 16.64'$

PRECAST REINFORCED CONCRETE CURB, TYPE B
 ML STA. 123+75.00 RT - 124+50.00 RT
 ML STA. 123+75.00 LT - 124+80.00 LT
 ML STA. 128+02.50 LT - 128+40.26 LT
 ML STA. 128+02.50 RT - 129+00.00 RT
 ML STA. 128+65.80 LT - 129+00+00 LT

VT 107 CURVE #2 DATA
 $\Delta = 12^\circ 40' 33.95''$
 $D = 7^\circ 23' 34.81''$
 $R = 775.00'$
 $T = 86.08'$
 $L = 171.46'$
 $E = 4.77'$

ANCHOR FOR STEEL BEAM RAIL
 ML STA. 128+41.00 LT
 ML STA. 128+35.00 RT



ROADWAY LAYOUT SHEET 2

PROJECT NAME:	BETHEL	PLOT DATE:	20-MAY-2011
PROJECT NUMBER:	BRF 022-1(14)	DRAWN BY:	G. ROKES
FILE NAME:	sfi6lbr.dgn	CHECKED BY:	S. SCRIBNER
PROJECT LEADER:	M. EVANS-MONGEON	SHEET	17 OF 148
DESIGNED BY:	S. SCRIBNER	ROADWAY LAYOUT SHEET 2	