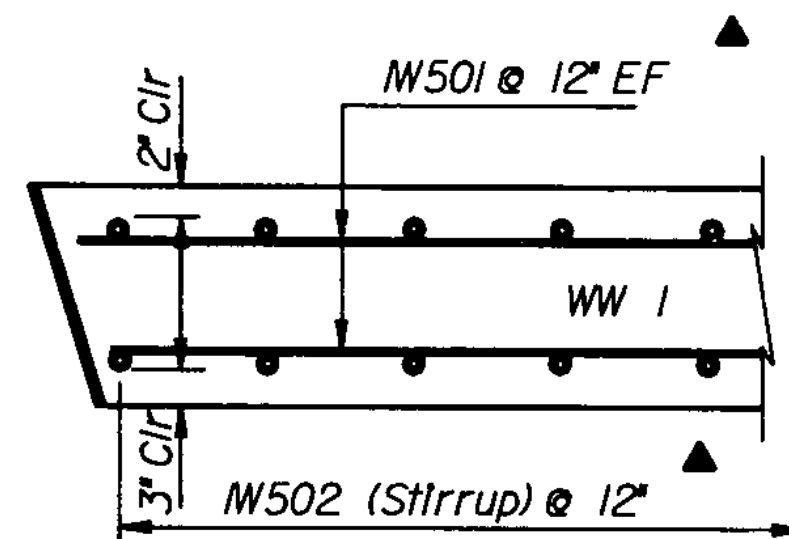
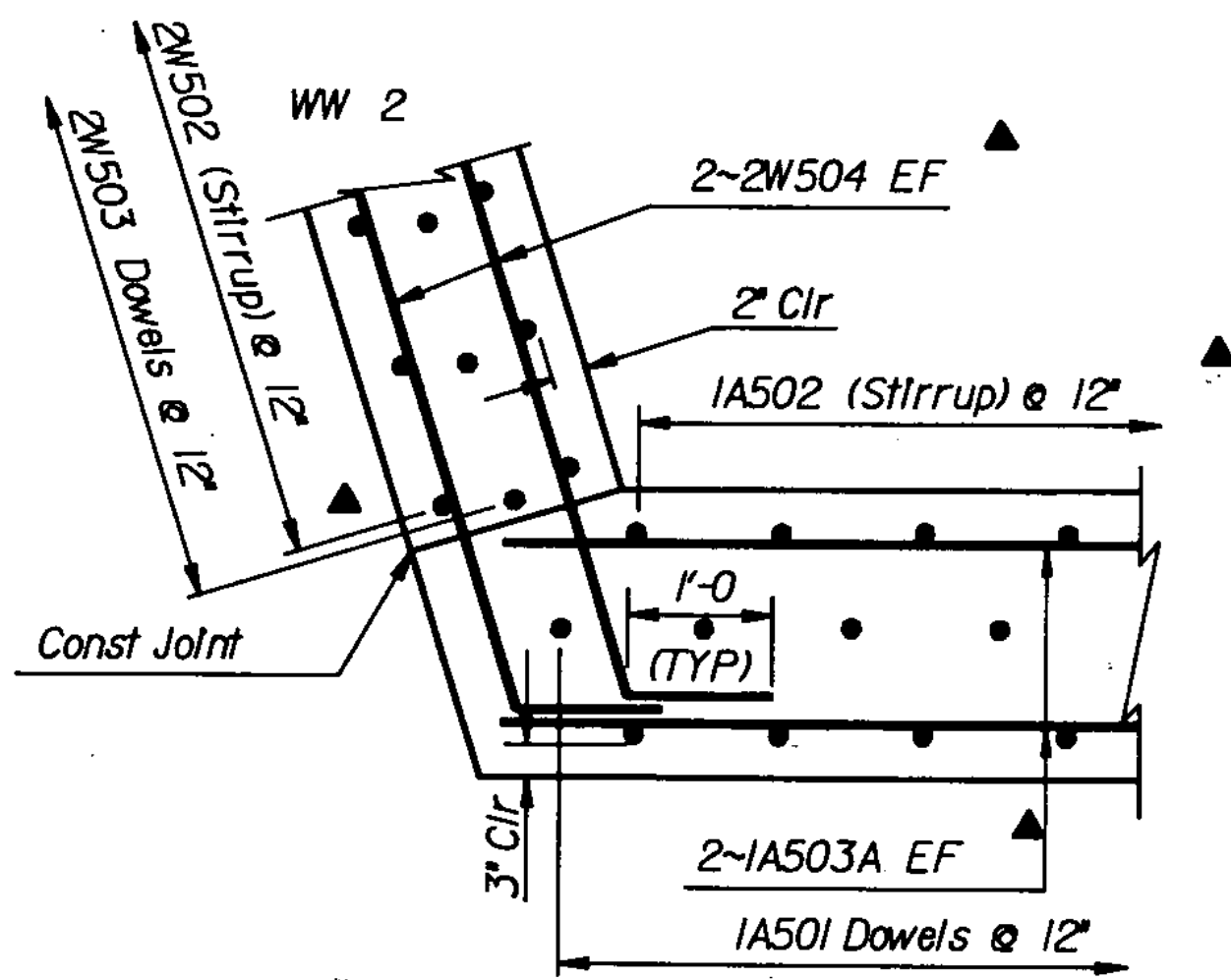


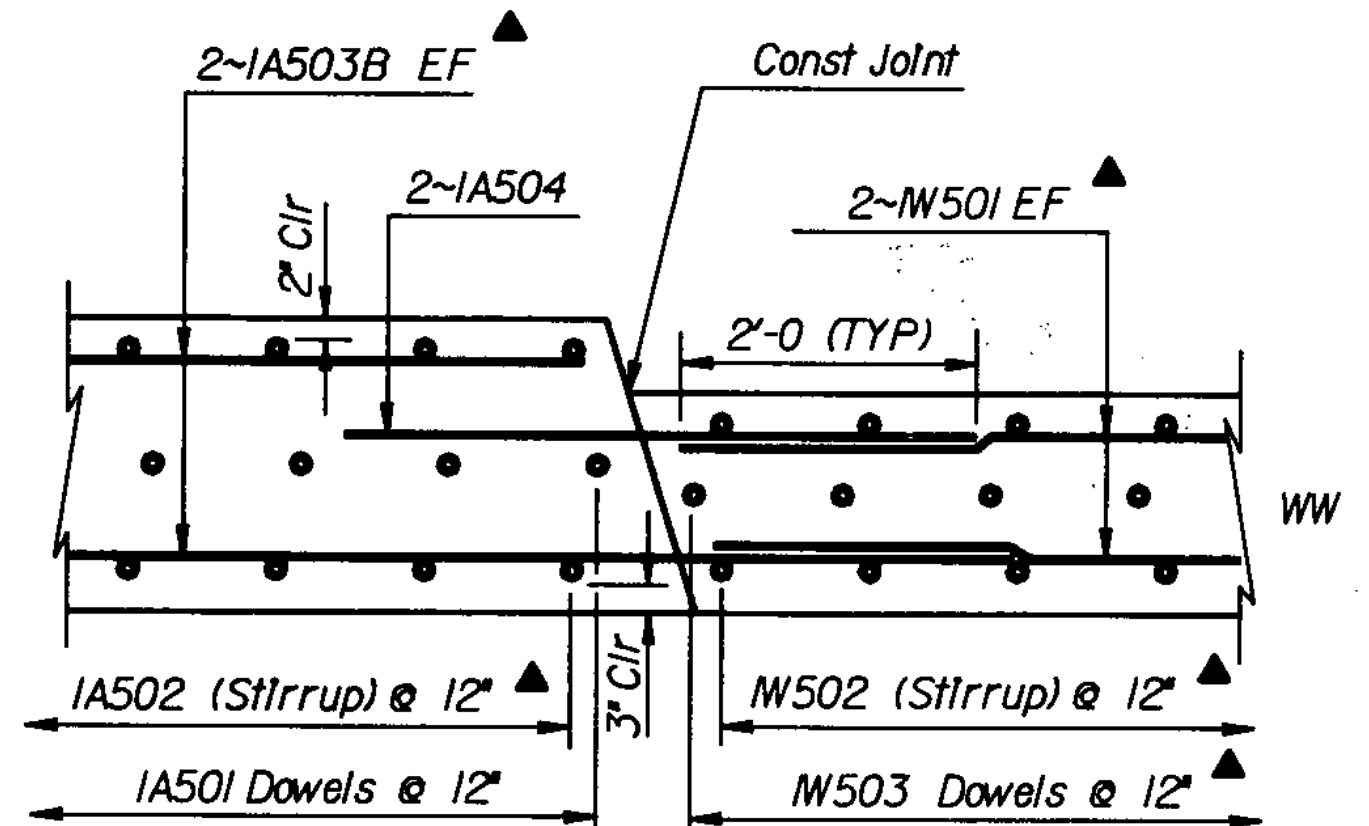
- ▲ Indicates Cut to Fit In Field
- Indicates Bend to Fit In Field



SECTION B-B
Scale 3/4" = 1'-0"



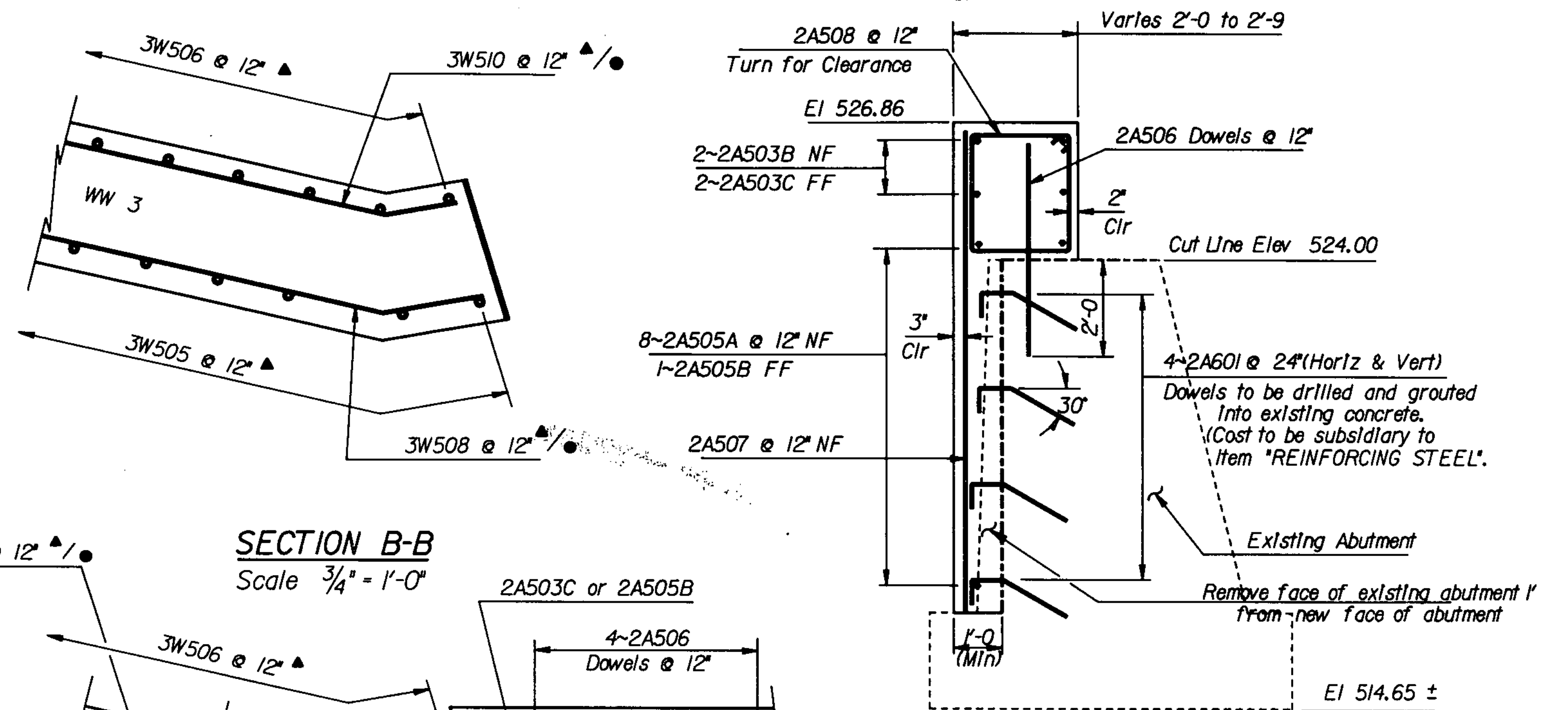
SECTION A-A
Scale 3/4" = 1'-0"



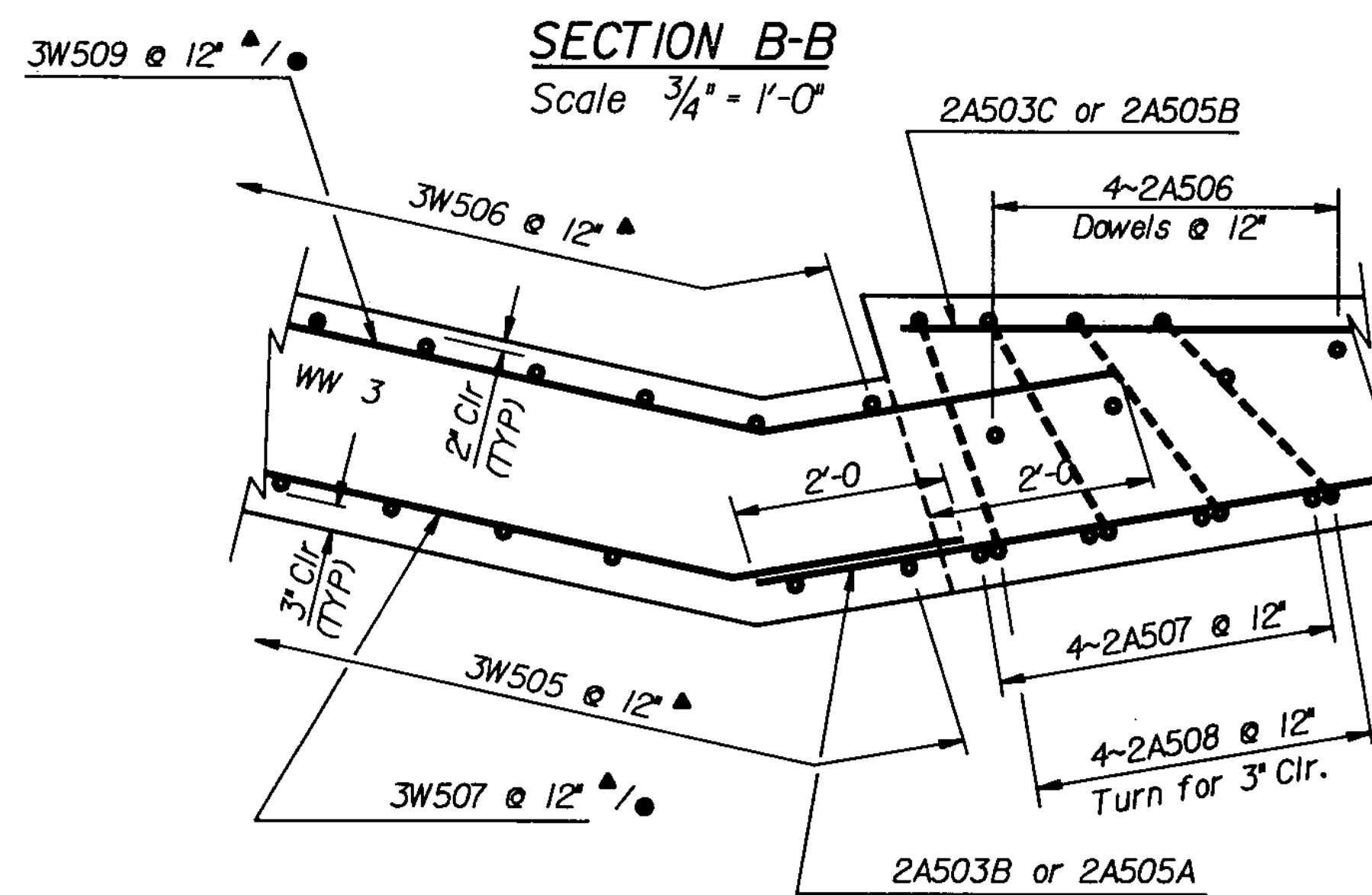
SECTION C-C
Scale 3/4" = 1'-0"

ABUTMENT No. 1 SECTIONS

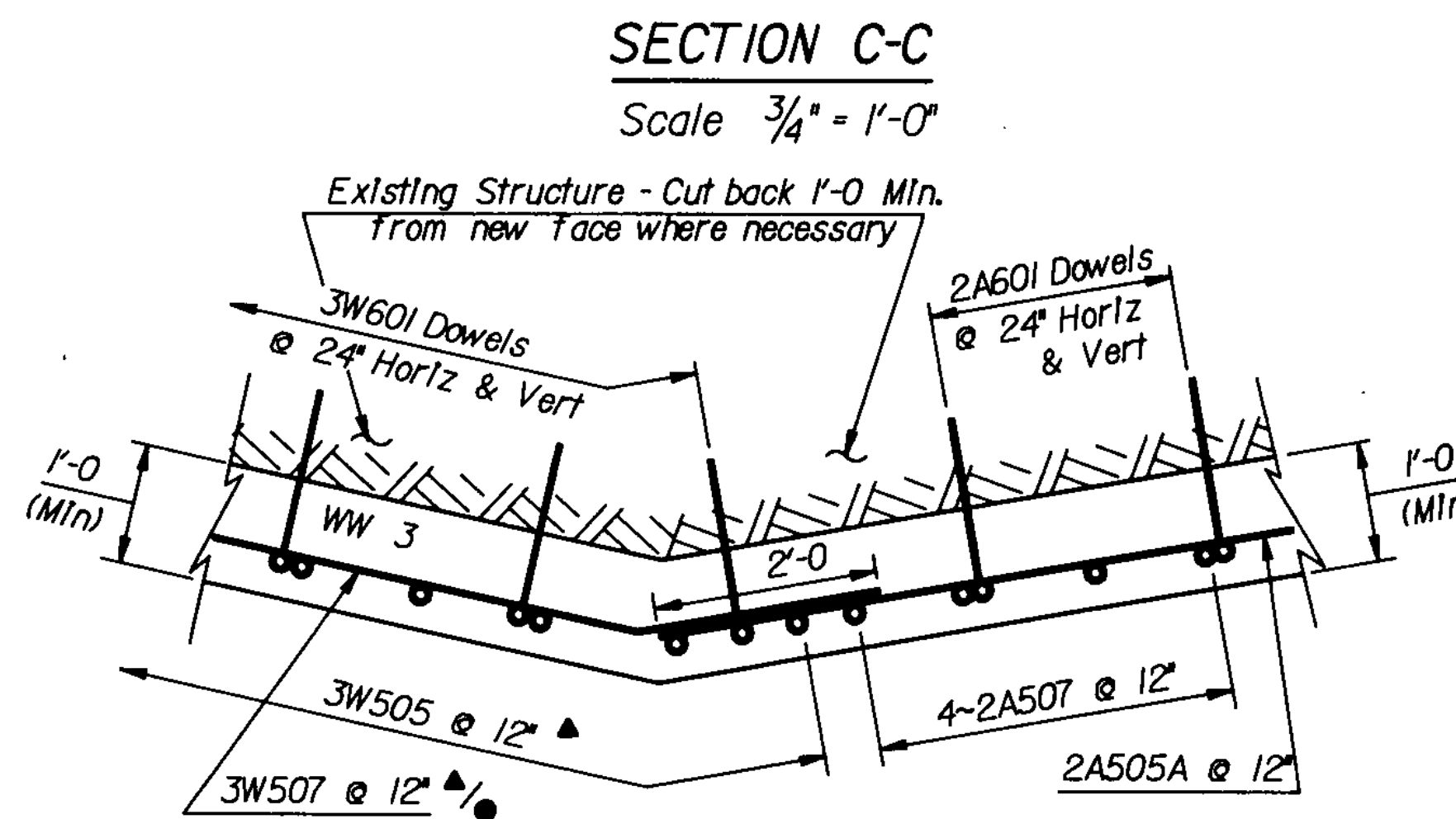
Note: Abutment No. 2 Similar to SECTION B-B & C-C & Wingwall No. 4



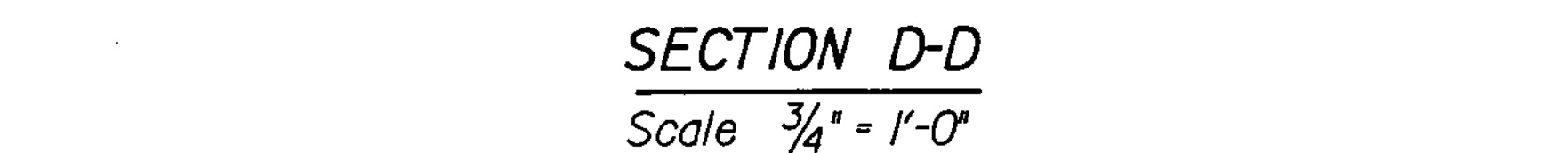
SECTION A-A
Scale 1/2" = 1'-0"



SECTION B-B
Scale 3/4" = 1'-0"



SECTION C-C
Scale 3/4" = 1'-0"



SECTION D-D
Scale 3/4" = 1'-0"

ABUTMENT No. 2 SECTIONS

STATE OF VERMONT		AGENCY OF TRANSPORTATION	
Town Of	Montgomery	Bridge No.	15
Highway No.	Vt Rte 118	Log Sta.	296 + 30
		Surv. Sta.	Rov 55 + 62.85
Vt Rte 118 over the Trout River			
Abutment No's 1 & 2 Sections			
Designed By	K.R. Stone	Drawn By	E. Blodgett
Checked By	K.R. Stone	Bridge Design Supervisor	F.W. Bolcum Date 12/84
PROJECT	Montgomery	PROJECT NO.	BHS 0283161S
LG.C. info.	05AM30237REBAR2.DGN		
Bridge Sheet No.		Sheet	14 of 46