

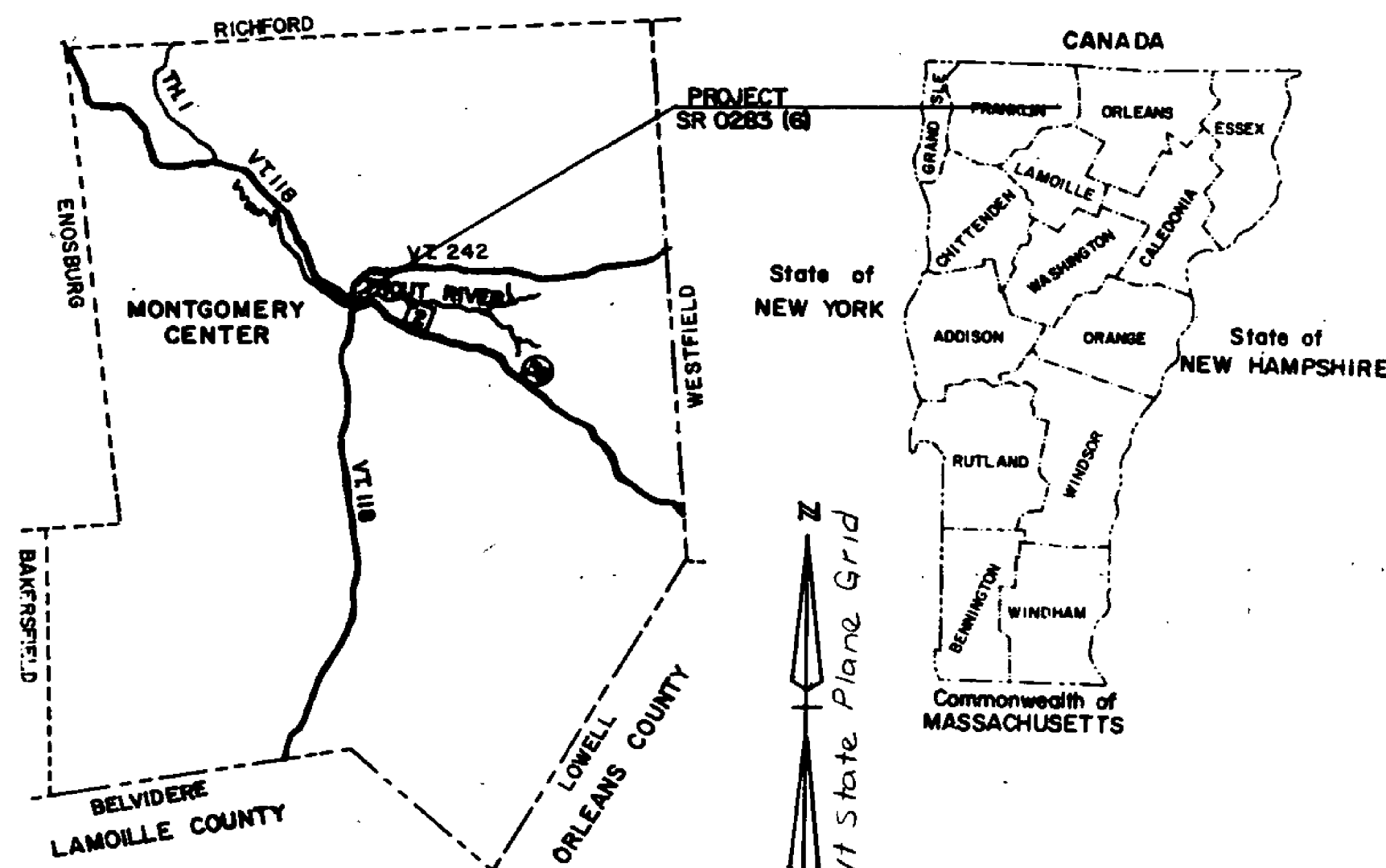
Date **APR 5 1985**

Stephen C. Austin
Contractor
Stephen C. Austin
Signature
Burner
Title
Jane C. Campbell
Transportation Secretary's Signature

**STATE OF VERMONT
AGENCY OF TRANSPORTATION**



**PROPOSED IMPROVEMENT
TOWN OF MONTGOMERY
COUNTY OF FRANKLIN
VT. ROUTE 118 BRIDGE NO. 15**



- INDEX OF SHEETS**
- TITLE
 - PLAN
 - PROFILE & TYPICAL ROADWAY SECTIONS
 - R.O.W. DETAIL
 - R.O.W. PLAN
 - QUANTITY
 - PLAN & ELEVATION
 - SUPERSTRUCTURE DETAILS
 - FRAMING PLAN
 - CURTAIN WALL, JOINT SEALER DETAILS & CONSTRUCTION SEQUENCE
 - SOLE PLATE & BEARING DETAILS
 - ABUTMENT NO. 1 DETAILS
 - ABUTMENT NO. 2 DETAILS
 - ABUTMENT NO. 1 & 2 SECTIONS
 - WINGWALL NO. 1 & 2 DETAILS
 - WINGWALL NO. 3 & 4 DETAILS
 - REINFORCING STEEL SCHEDULE
 - VERMONT RTE. 118 X-SECTIONS
 - CHANNEL X-SECTIONS

STANDARD DRAWINGS

31. STD. DWG	C-1	12/16/80 R
32. STD. DWG	C-2A	12/14/81
33. STD. DWG	E-3	12/15/78 R
34. STD. DWG	E-6	4/1/89 R
35. STD. DWG	E-7	2/12/82 R
36A. STD. DWG	E-7A	6/8/77 R
37. STD. DWG	G-9	12/16/80 R
38. STD. DWG	SCB-D1-75	9/14/81 R
39. STD. DWG	SCB-D4-76	9/14/81 R
40. STD. DWG	SCB-D6-73	1/3/79
41. STD. DWG	SCB-D7-71	12/15/76 R
42. STD. DWG	SCB-D8-71	6/1/77 R
43. STD. DWG	SCB-D9-71	1/27/75 R
44. STD. DWG	SCB-R1-71	7/1/77 R (1 of 2)
45. STD. DWG	SCB-R1-71	7/1/77 R (2 of 2)
46. STD. DWG	SB-R5-76	6/18/82

36B. STD. DWG	E-15	7/29/81
36C. STD. DWG	E-19B	10/6/79
36D. STD. DWG	E-29	8/25/81 R
36E. STD. DWG	E-34	3/22/83 R
36F. STD. DWG	E-36	8/23/82 R

Project Location: Beginning at a point approximately 0.031 miles southerly of the intersection of Vt. Rte. 118 and Vt. Rte. 242 and extending northerly 0.032 miles.

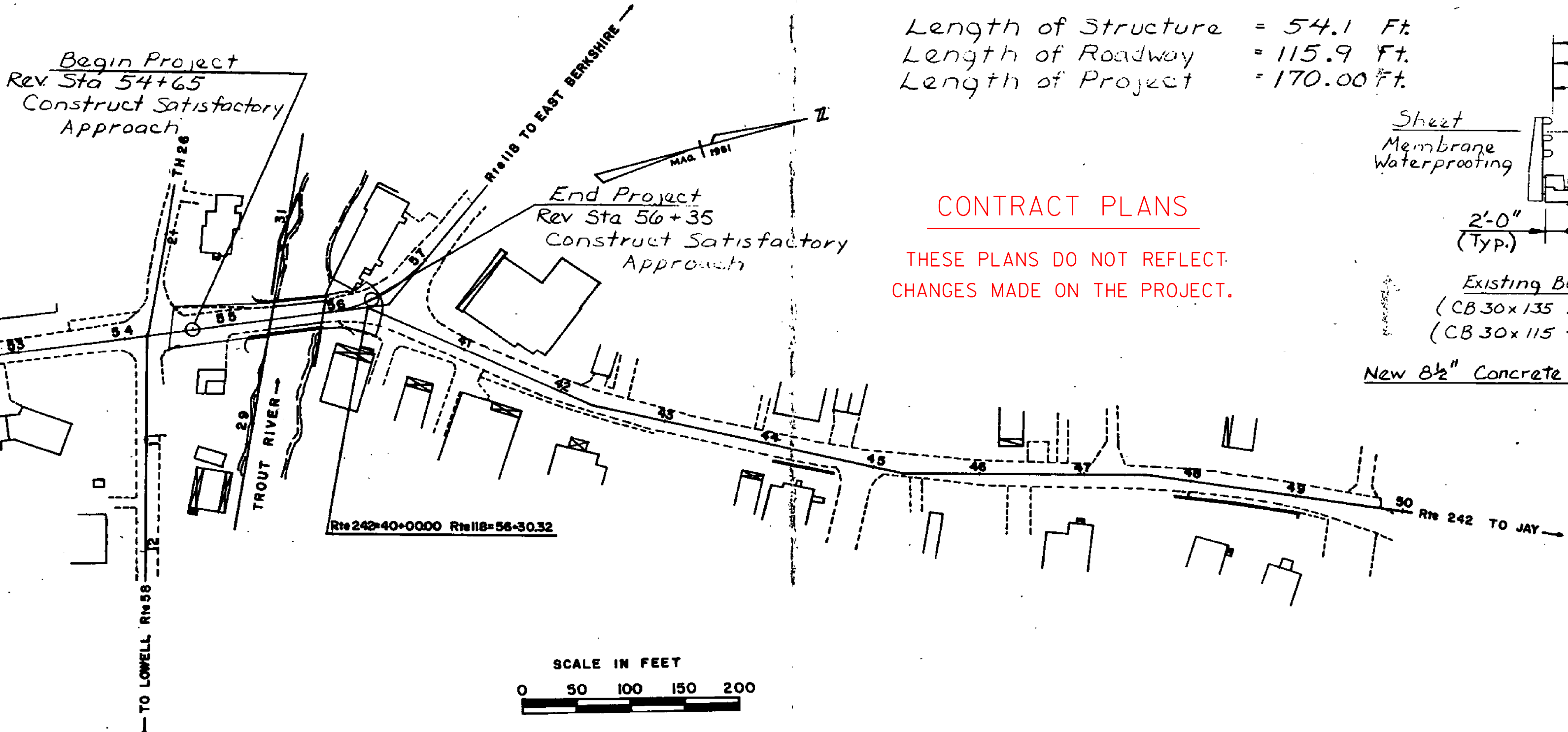
Project Description: Remove existing concrete deck, add new cover plates to existing beams, add new concrete deck, cap existing abutments and wingwalls, and related work.

SCALE IN FEET

GENERAL NOTES

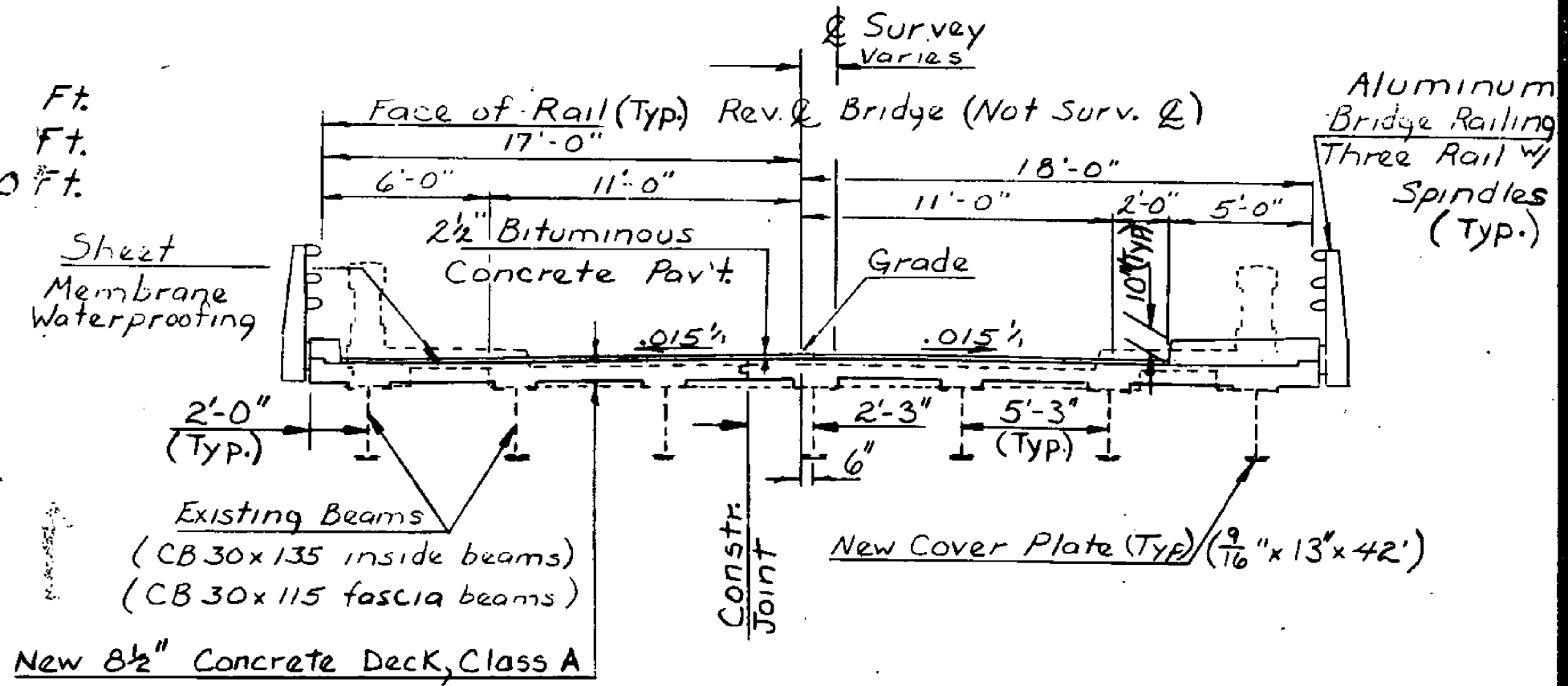
- THE GENERAL NOTE PERTAINING TO SPECIFICATIONS, MATERIALS, AND CONSTRUCTION IS SHOWN ON STANDARD DRAWING SCB-D1-75. OTHER GENERAL NOTES ON THE STANDARD NOT OTHERWISE SHOWN OR MODIFIED ON THESE PLANS, ARE NOTES 1, 3, 4, 5, 6, 7, 8, 9, 11, 14, AND 16.
- THE STRUCTURE IS DESIGNED FOR AN HS-25-44 LIVE LOAD WITH NO FUTURE PAVEMENT ALLOWANCE.
- FLEMING BRACKETS OR SIMILAR FALSEWORK SHALL BE SPACED AT A MAXIMUM OF FOUR (4) FEET.
- THE EXISTING CONCRETE DECK, CURTAINMALL, AND EXISTING BRIDGE PAVEMENT SHALL BE REMOVED UNDER THE ITEM "PARTIAL REMOVAL OF STRUCTURE". PARTS OF THE EXISTING RETAINING WALLS AND ABUTMENTS, AS DETAILED ON THE PLANS, SHALL BE RETAINED UNDER THE ITEM "REMOVAL OF CONCRETE OR MASONRY". CARE SHALL BE TAKEN NOT TO DAMAGE THE EXISTING BEAMS WHICH SHALL BE REPOSITIONED AND REUSED.
- THE CUT LINES ON THE ABUTMENTS AND WINGWALLS SHALL FIRST BE SCORED WITH A 1" DEEP SAW CUT SO AS TO CREATE A SMOOTH JOINT.
- ALL EXISTING STRUCTURE DIMENSIONS, STATIONS, AND ELEVATIONS SHALL BE FIELD CHECKED PRIOR TO COMMENCEMENT OF CONSTRUCTION.
- THE DRILLING AND GROUTING OF BARS INTO EXISTING CONCRETE SHALL BE CONSIDERED SUBSIDIARY TO THE ITEM "REINFORCING STEEL".
- WATER REPELLENT SHALL BE APPLIED TO ALL EXPOSED CONCRETE ON BOTH SUB-STRUCTURE AND SUPERSTRUCTURE, EXCEPT THE UNDERSIDE OF THE SLAB BETWEEN DRIP BEADS.
- EXTREME CAUTION SHALL BE TAKEN TO AVOID DISTURBING THE BUILDING'S FOUNDATION IN THE VICINITY OF THE END OF WINGWALL 3.
- OVERHAUL SHALL BE CONSIDERED SUBSIDIARY TO ALL OTHER ITEMS IN THE CONTRACT.

(General Notes Continue on Sheet 10 of 46.)



Length of Structure = 54.1 Ft.
Length of Roadway = 115.9 Ft.
Length of Project = 170.00 Ft.

CONTRACT PLANS
THESE PLANS DO NOT REFLECT CHANGES MADE ON THE PROJECT.



- CONVENTIONAL SIGNS**
- COUNTY LINE
 - TOWN LINE
 - LIMITS OF ACCESS
 - POINT OF ACCESS
 - FENCE LINE
 - STONE WALL
 - TRAVELED WAY
 - GUARD RAIL
 - RAILROAD
 - SURVEY LINE
 - CULVERT
 - POWER POLE
 - TELEPHONE POLE
 - TREES
 - CONTROL OF ACCESS
 - PROPERTY LINE
 - R.O.W TAKING LINE
 - SLOPE RIGHTS
 - TOP OF CUT
 - TOE OF SLOPE

DATUM

VERTICAL	NGVD 1929
HORIZONTAL	N/A

LOAD RATING (TONS)

STRESS LEVELS	TRUCK					
	H	HS	3S2	6 AXLE	3A, 91R	4A, 5TR, 5A, SEMI
INVENTORY 0.55 Fy = 10.5 KSI	40	51				
POSTED 0.67 Fy = 20.0 KSI	56		102		61	63 84
OPERATING 0.75 Fy = 22.5 KSI			122	125		

HYDRAULIC DATA

DRAINAGE AREA = 23.4 SQ. MI.
 $Q_{10} = 2250$ CFS ; HW ELEV. = 522.7
 $Q_{25} = 3000$ CFS ; HW ELEV. = 524.1
 $Q_{50} = 3600$ CFS ; HW ELEV. = 525.1
 $Q_{100} = 4500$ CFS ; HW ELEV. = 526.5
 TAILWATER ELEVATION @ $Q_{50} = 521.6'$
 VELOCITY THROUGH BRIDGE @ $Q_{50} = 9.0$ FPS

These plans are subject to such engineering changes as may be required by the Federal Highway Administration or the Director of Engineering and Construction.

Construction is to be carried on in accordance with these plans and the Standard Specifications for Highway and Bridge Construction dated March, 1976, as approved by the Federal Highway Administration on October 27, 1978 for use on this project, including all subsequent revisions and such revised specifications and special provisions as are incorporated in these plans.

SUBMITTED BY ORDER OF THE STATE TRANSPORTATION BOARD
 APPROVED *S.J. [Signature]* DATE 4-4-85
 DIRECTOR OF ENGINEERING AND CONSTRUCTION

MONTGOMERY
 PROJECT BHS 0283(6)S
 SHEET 1 OF 46 SHEETS