

REV. PI. 236+81.33 =
235+88.19

SPECIAL DITCH W/STONE FILL			
STA.	STA.	LOCATION	TYPE
REV 236+00	237+73	LEFT	I
REV 237+39	238+25	RIGHT	I
REV 237+83	238+50	LEFT	I

B.M. # 25
44 SQUARE
IN STONE WALL
ELEV. 771.04

TEMPORARY
BARRIER RAIL
(PHASE I)

PAVEMENT
CHANGE
40
MPH

REDUCE
SPEED
AHEAD

STA. 247+50
LT.
SEE STD.
E-102

STA. 242+50 LT.
SEE STD. E-102

STONE FILL TYPE II		
STA.	STA.	LOCATION
REV. 237+17	REV. 237+63	RIGHT
REV. 237+39	REV. 237+99	LEFT

SAND BORROW 24" DEPTH
REV. 236+00 - REV. 241+25
REV. 250+00 - REV. 252+00

* CONSTRUCTION SIGNS TO BE ERECTED
AND REMAIN IN PLACE ONLY DURING
CONSTRUCTION OF PIPE-ARCH AT
237+52.49.

CONSTRUCT DRIVE			
STA.	LOCATION	TYPE	WIDTH
REV. 236+83	RIGHT	GRAVEL	16 FT.
REV. 240+02	RIGHT	GRAVEL	12 FT.
REV. 243+02	LEFT	GRAVEL	12 FT.
REV. 251+03	RIGHT	GRAVEL	22 FT.

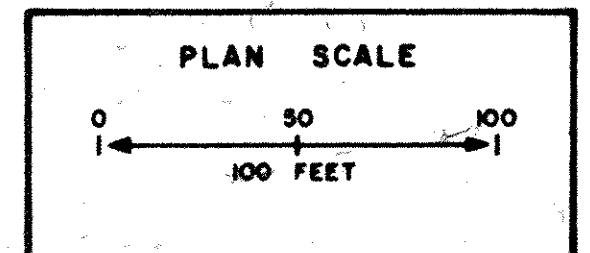
BREAK-AWAY CABLE TERMINAL
REV. 238+00 ~ 238+25 RT
STEEL BEAM GUARD RAIL
REV. 236+88 ~ 238+00 RT

CABLE GUARD RAIL
REV. 236+25 ~ 238+65 LT.

B.M. # 26
44 SQUARE
IN LEDGE
ELEV. 785.80

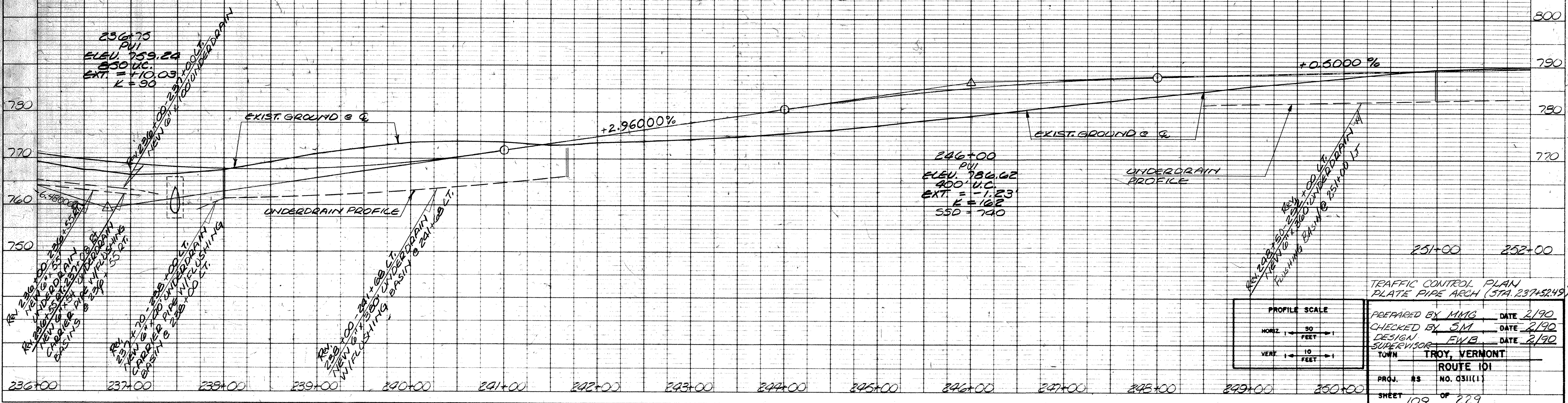
SILT FENCE		
STA.	STA.	LOCATION
REV. 236+00	REV. 236+65	RIGHT

EROSION MATTING		
STA.	STA.	LOCATION
REV. 238+25	239+80	RIGHT
REV. 239+50	242+79	LEFT
REV. 240+20	241+30	RIGHT



DATUM NATIONAL GEODEIC
VERTICAL VERTICAL DATUM 1929
HORIZONTAL VT. STATE
COORDINATE SYSTEM

LEGEND
TEMPORARY TRAFFIC BARRIER
--- PHASE I
--- PHASE II



PROFILE SCALE
HORIZ 1" = 50 FEET
VERT 1" = 10 FEET

TRAFFIC CONTROL PLAN
PLATE PIPE ARCH (STA. 237+52.49)

PREPARED BY MMG DATE 2/90
CHECKED BY SM DATE 2/90
DESIGN SUPERVISOR EWB DATE 2/90
TOWN TROY, VERMONT
ROUTE 101
PROJ. #S NO. 0311(1)
SHEET 109 OF 229