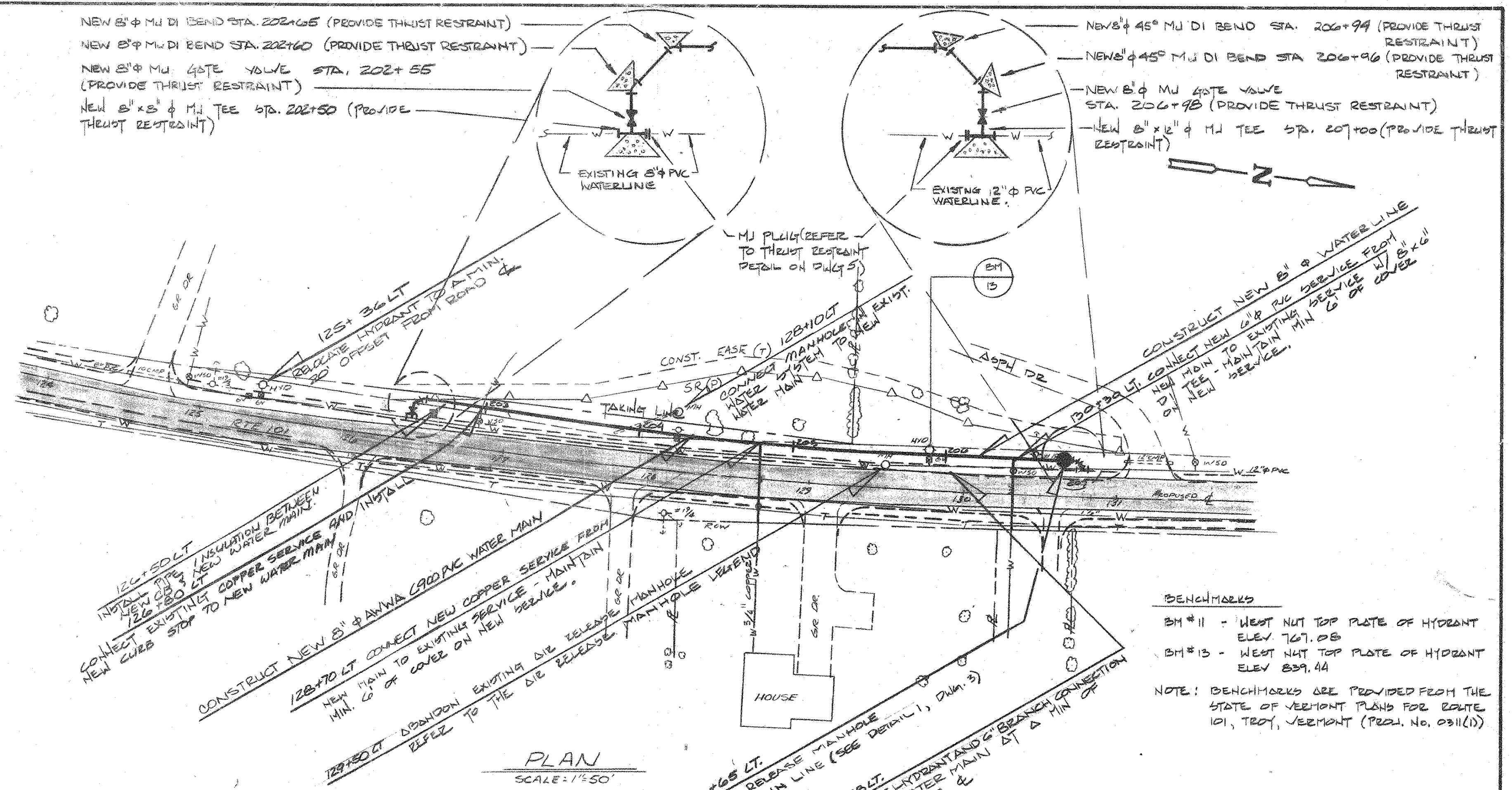
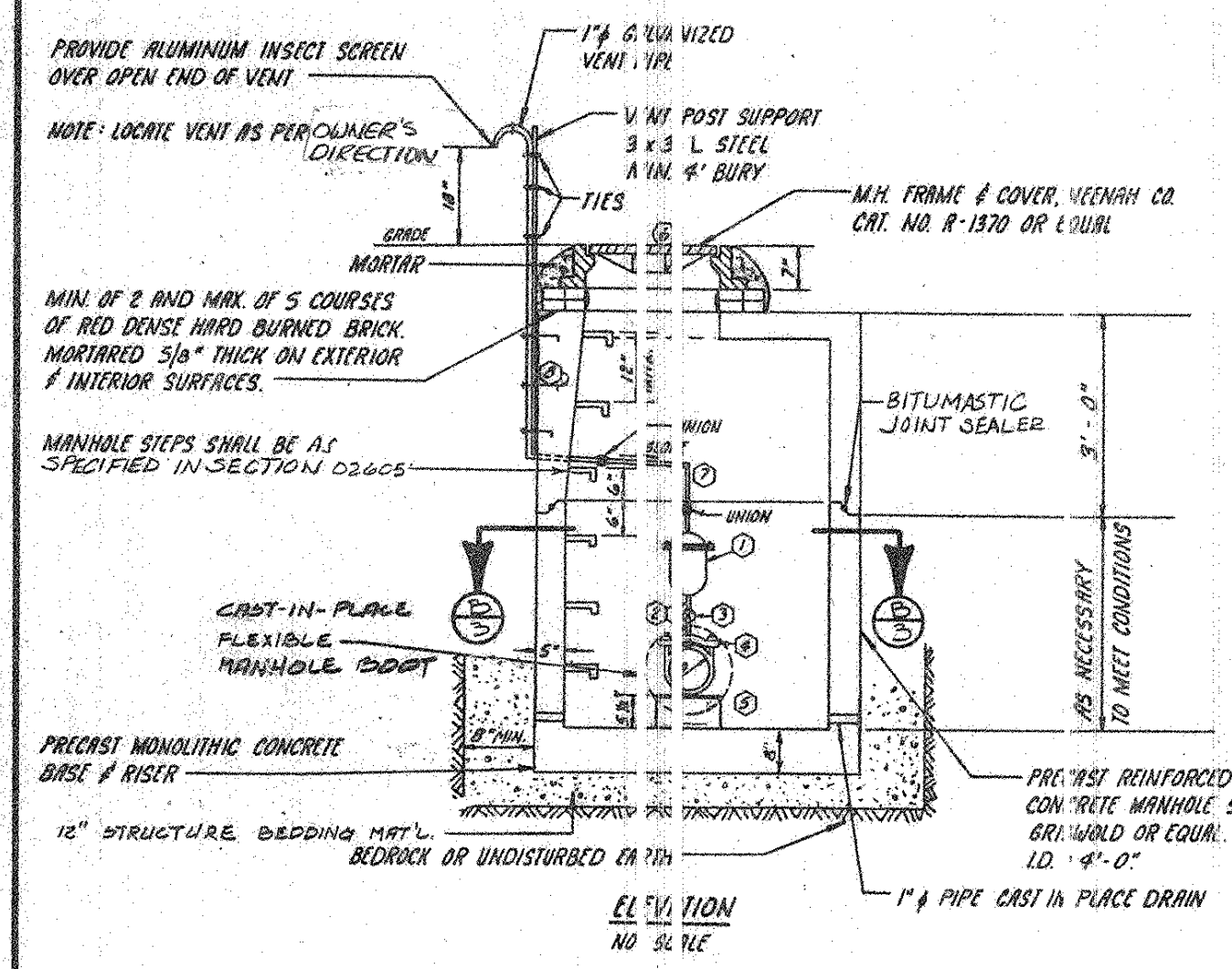


PLAN
SCALE: 1" = 50'

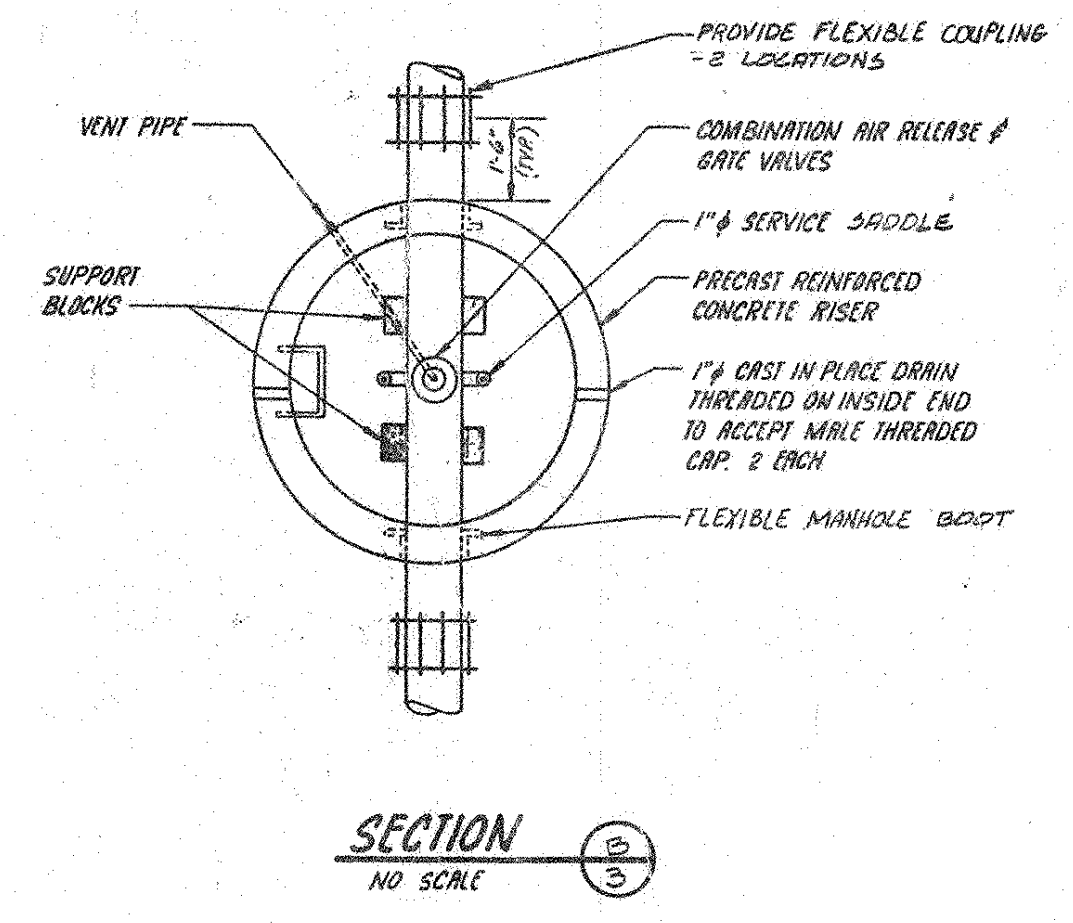


PLAN
SCALE: 1" = 50'

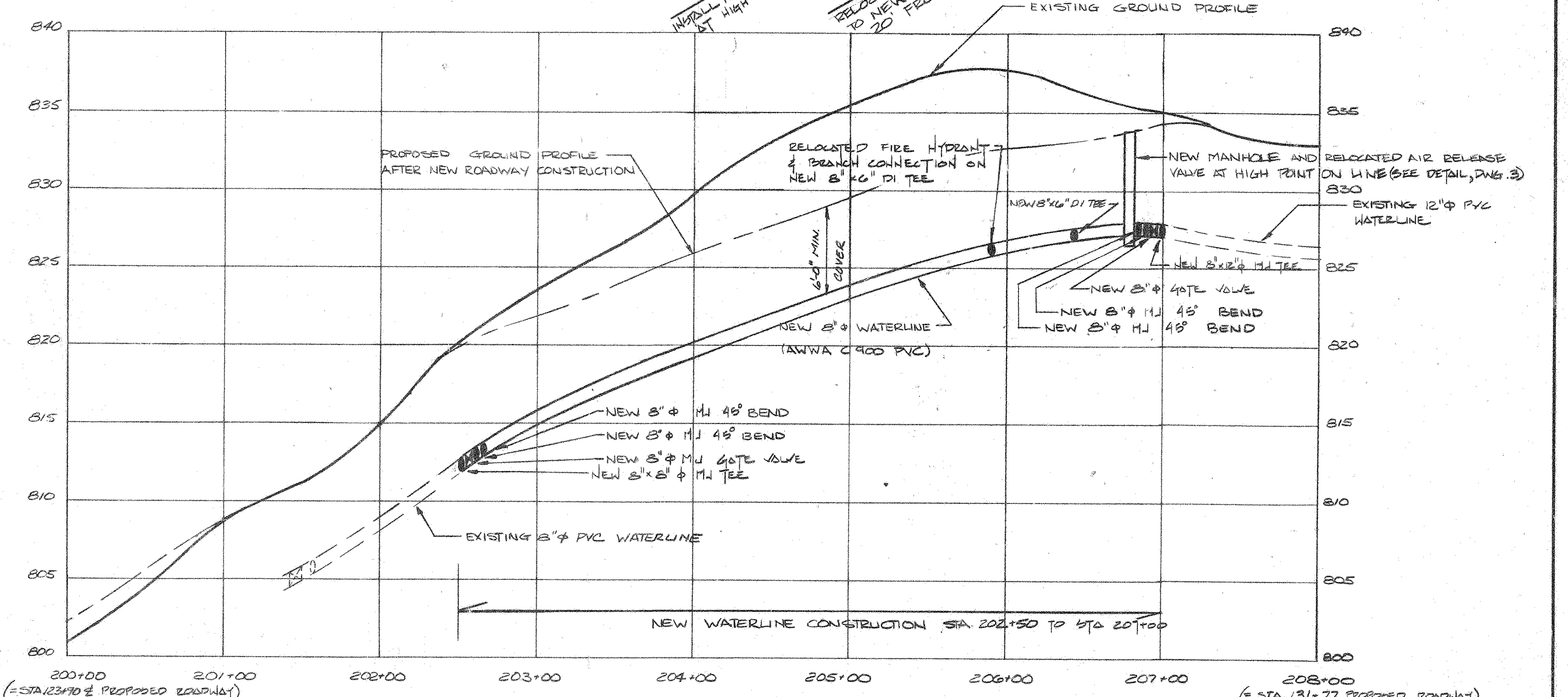
BENCHMARKS
 BM # 11 - WEST NUT TOP PLATE OF HYDRANT
 ELEV. 767.08
 BM # 13 - WEST NUT TOP PLATE OF HYDRANT
 ELEV. 839.44
 NOTE: BENCHMARKS ARE PROVIDED FROM THE STATE OF VERMONT PLANS FOR ROUTE 101, TROY, VERMONT (PROJ. NO. 0311(D))



EXISTING AIR RELEASE MANHOLE DETAIL
NO SCALE



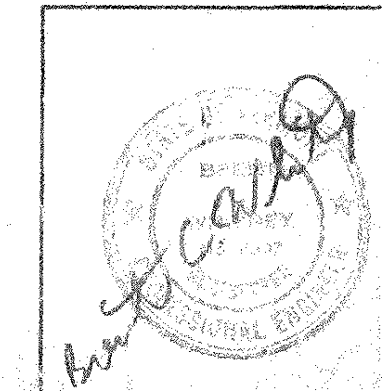
SECTION
NO SCALE



PROFILE
SCALE: 1" = 50' VERT.
1" = 5' HORIZ.

- AIR RELEASE MANHOLE LEGEND**
- AIR RELEASE VALVE, APCO TYPE 2004 1" PIPE THREAD, 3/16" ORIFICE DIAMETER. REMOVE FROM EXISTING MANHOLE AND REUSE.
 - 1" DIAMETER x 3" LONG SPOOK PIECES 2 REQUIRED.
 - 1" DIAMETER BRASS GATE VALVE.
 - MUELLER SINGLE STRAP I.P. THREAD SERVICE CLAMP WITH 1" TAP OR EQUAL.
 - CONCRETE SUPPORT BLOCK (2 EACH). 12" MIN. AS NECESSARY.
 - MANHOLE COVER SHALL BE FLUSH WITH SURROUNDING GRADE AS APPROPRIATE. REMOVE AND REUSE MANHOLE FRAME AND COVER.
 - 1" DIAMETER GALVANIZED VENT PIPE. CONNECT VENT PIPE AS NECESSARY TO THREADED OUTLET OF AIR RELEASE VALVE. REUSE EXTERIOR PIPING AND ANGLE IRON. TIE BOLTS FOR VENT PIPE. 1" O.C. LINE TO BE ANCHORED INTO WALL OF CONCRETE MANHOLE.

NOTE: THE EXISTING AIR RELEASE VALVE, RELATED PIPING, FITTINGS, VENT AND SUPPORT POST ARE TO BE REMOVED FROM THE EXISTING MAIN AND REUSED ON THE RELOCATED WATER MAIN. THE MANHOLE FRAME AND COVER ARE ALSO TO BE REUSED.
 THIS WORK IS PAID FOR UNDER ITEM 604.21 - PRECAST REINFORCED CONCRETE MANHOLE WITH CAST IRON COVER.



24 Wilton Park
 P.O. Box 784
 Wilton, VT 05495-0784
 (802) 878-7333
 (802) 878-1742 (Fax)

Phillips & Embury
 North Consulting Geologists
 Boston Associates
 Junonian Engineering

TWM NORTHEAST
 A subsidiary of Thomas Environmental Inc. (T&E) and Thomas Geology Corporation

FIRE HYDRANT RELOCATION AND PLAN & PROFILE		DESIGNED WAE/PTP	PROJECT NO. 8836
WATER MAIN STATION 202+50 TO 207+00		DRAWN ECS/PTP	
WATER MAIN RELOCATIONS		CHECKED BCW	DRAWING NO. 3
TOWN OF TROY, VERMONT		DATE FEB 99	SHEET 3 OF 5