

Steel Beam Guard Rail

124+25 - REV 150+25	LT.
125+25 - 129+25	RT.
REV 152+74 - REV 155+49	RT.

BEGIN MAINT. AGREE. AREA NO. 1  
**T.H. 24 40+17 CL**  
 (LENGTH 102')

Breaking Cable Terminal

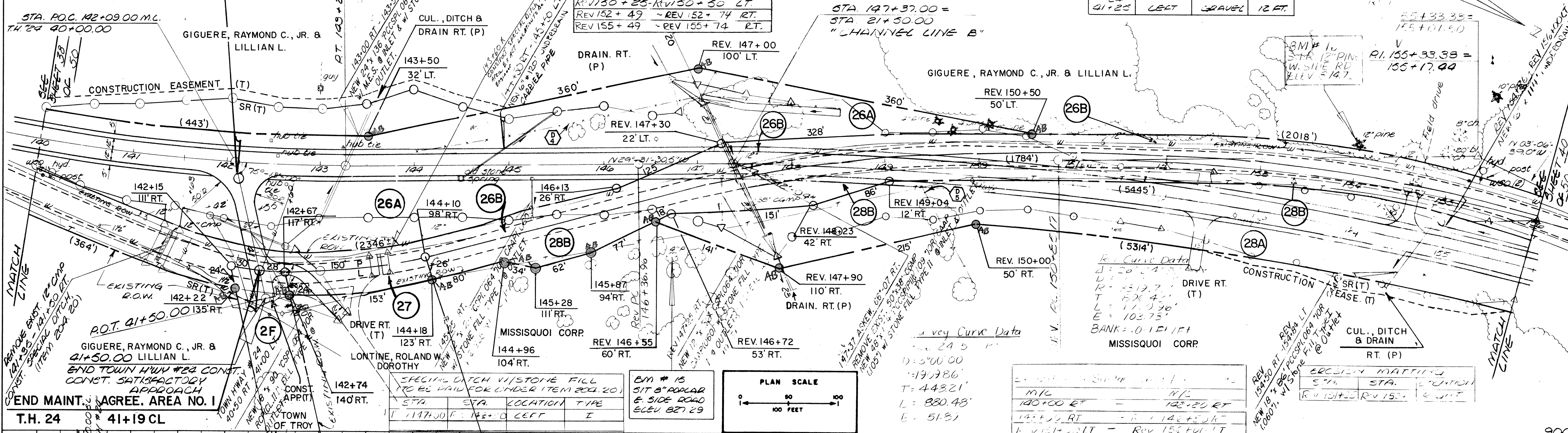
124+00 - 124+25	LT.
125+00 - 125+25	RT.
REV 129+25 - REV 129+50	RT.
REV 150+25 - REV 150+50	LT.
REV 152+49 - REV 152+74	RT.
REV 155+49 - REV 155+74	RT.

TREATED TIMBER CURB

STA	LOCATION	TYPE
145+25	REV 149+25	LT.
REV 152+74	REV 155+49	RT.

CONSTRUCT DRIVE

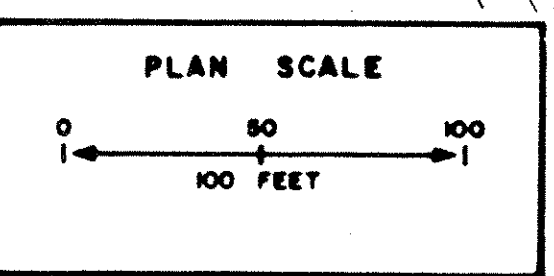
STA	LOCATION	TYPE	WIDTH
141+52+00	RIGHT	GRAVEL	13 FT.
REV 154+25	LEFT	GRAVEL	12 FT.
TOWN HWY #24 41+25	LEFT	GRAVEL	12 FT.



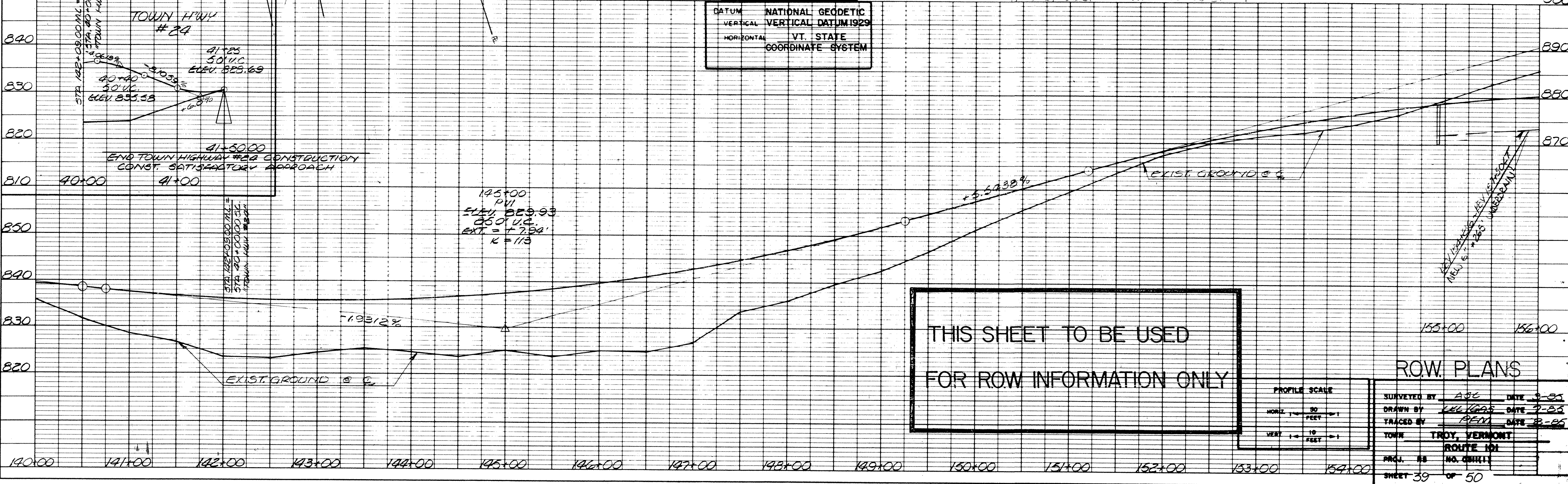
END MAINT. AGREE. AREA NO. 1  
**T.H. 24 41+19 CL**

STA	LOCATION	TYPE
147+00	42+00 LEFT	I

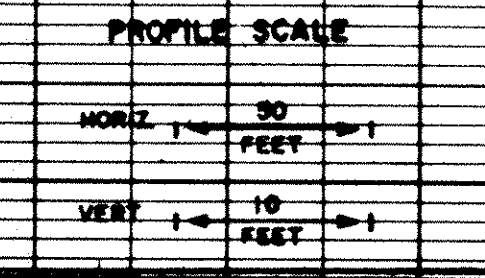
BM # 15  
 S/T B" ROD CAR  
 E. SIDE ROAD  
 ELEV. 827.29



DATUM NATIONAL GEODETIC  
 VERTICAL VERTICAL DATUM 1929  
 HORIZONTAL VT. STATE  
 COORDINATE SYSTEM



**THIS SHEET TO BE USED FOR ROW INFORMATION ONLY**



ROW PLANS

SURVEYED BY	ASB	DATE	3-85
DRAWN BY	LEE KANE	DATE	3-85
TRACED BY	BEV	DATE	3-85
TOWN	TROY, VERMONT	ROUTE NO.	101
PROJ. NO.	NO. 08111	SHEET	39 OF 50

DATE

BY	
DATE	
REVISION	
NO.	

DATE

BY	
DATE	
REVISION	
NO.	