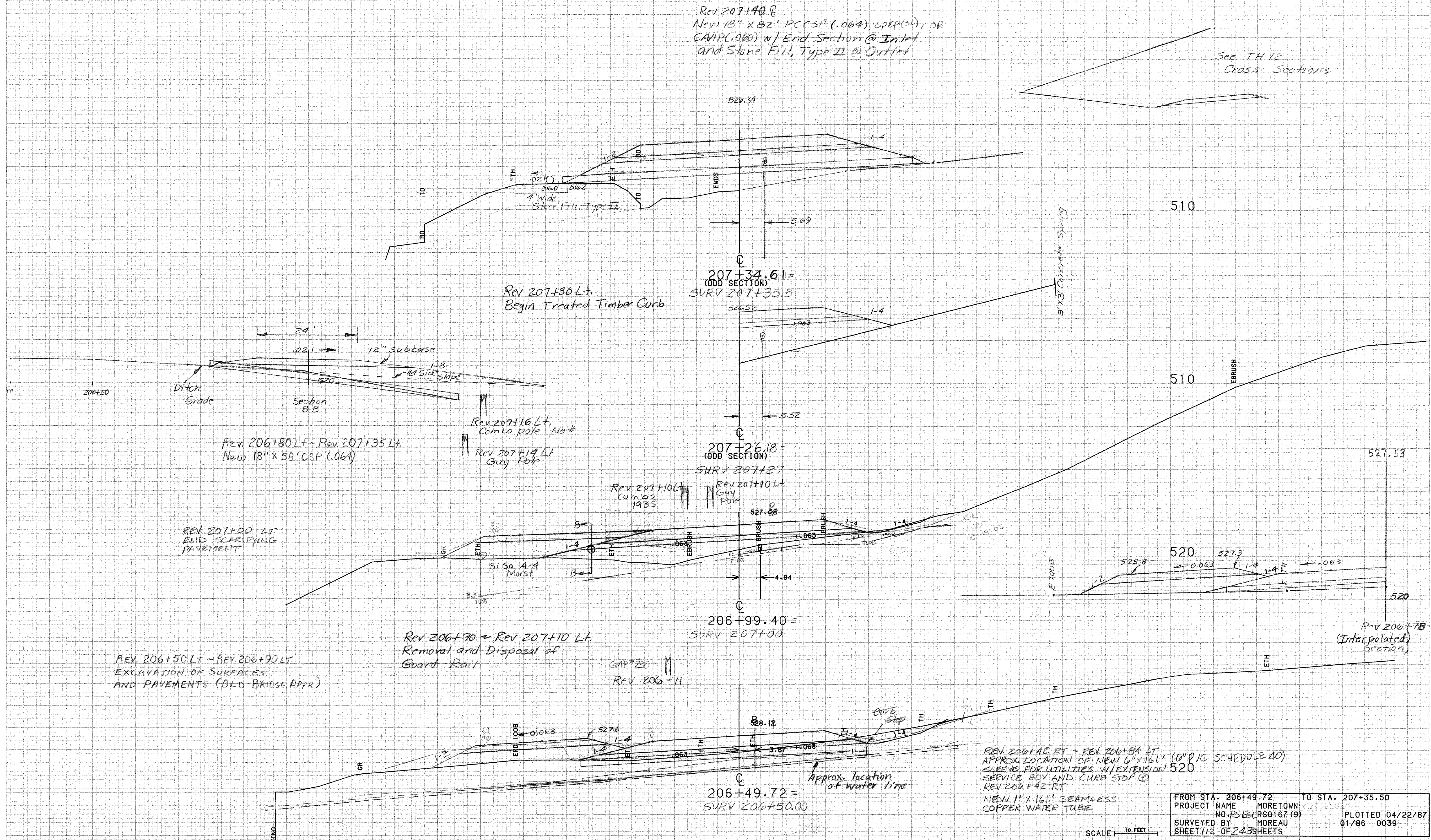


Rev. 207+40 E  
 New 18" x 82' PCCSP (.064), OPER(54), OR  
 CAAP(.060) w/ End Section @ Inlet  
 and Stone Fill, Type II @ Outlet

See TH 12  
 Cross Sections



Rev. 206+80 Lt ~ Rev. 207+35 Lt.  
 New 18" x 58' CSP (.064)

Rev. 207+16 Lt.  
 Combo Pole No #

Rev. 207+14 Lt  
 Guy Pole

Rev. 207+10 Lt  
 Combo 1935

Rev. 207+10 Lt  
 Guy Pole

REV. 207+00 LT  
 END SCARIFYING  
 PAVEMENT

REV. 206+50 LT ~ REV. 206+90 LT  
 EXCAVATION OF SURFACES  
 AND PAVEMENTS (OLD BRIDGE APPR)

Rev 206+90 ~ Rev 207+10 Lt.  
 Removal and Disposal of  
 Guard Rail

SMR # 25  
 Rev 206+71

REV. 206+42 RT ~ REV. 206+84 LT  
 APPROX. LOCATION OF NEW 6" x 161' (6" PVC SCHEDULE 40)  
 SLEEVE FOR UTILITIES W/ EXTENSION 520  
 SERVICE BOX AND CURB STOP @  
 REV. 206+42 RT  
 NEW 1" x 161' SEAMLESS  
 COPPER WATER TUBE

FROM STA. 206+49.72	TO STA. 207+35.50
PROJECT NAME	MORETOWN
NO. RSECRS0167 (9)	PLOTTED 04/22/87
SURVEYED BY	MOREAU
SHEET 112 OF 243 SHEETS	01/86 0039

SCALE 1" = 10 FEET