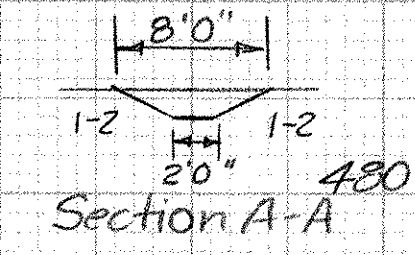
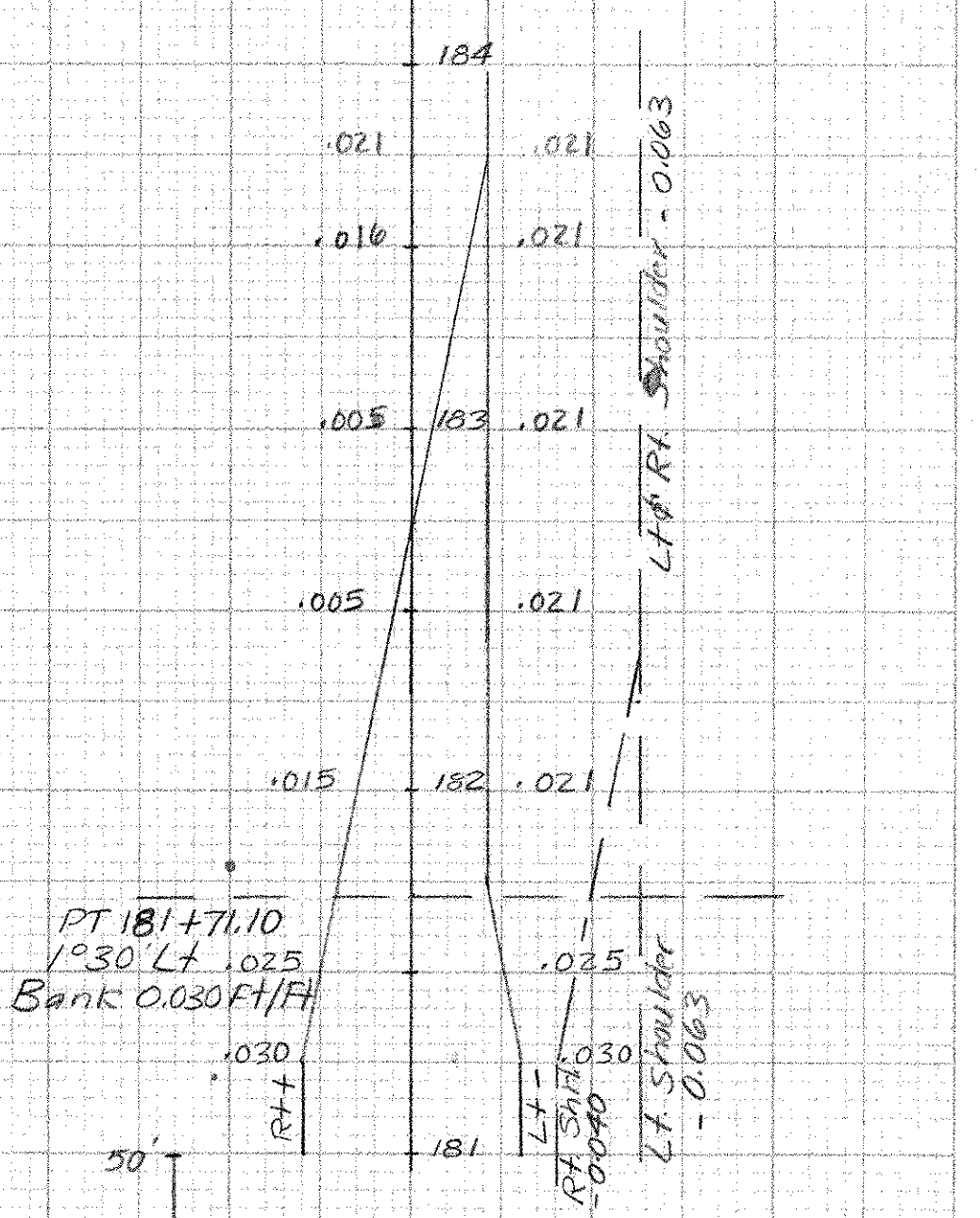


182+65 RT
8" BIRCH - REMOVE



470

182+00 LT ~ 182+53 RT
NEW 18" X 84' PCCSP (.064), CAAP (.060) OR
CPEP(SU) W/END SECTION AND INLET DITCH



470

181+75 RT
Begin Excavation of
Surfaces and Pavements

181+75 RT
END SCARIFYING
PAYEMENT

181+91 RT
Combo pile
232
214

PT 181+71.10
1/30' LT
Bank 0.030 F1/FH

182+00 LT
New 18" X 56' CSP (.064) or CAAP (.060)
w/1-25° and 1-15° Elbow w/TYP II
STONE PAD @ OUTLET

182+00
488.79

182+00 RT
3" POP. - REMOVE

181+63
(ODD SECTION)

181+60 RT
Relocate Mailbox -
Multiple Support (3 Boxes)

460

See TH 66 Cross Sections

FROM STA. 181+63	TO STA. 182+50
PROJECT NAME MORETOWN	PLOTTED 04/15/87
NO. RS EG. RS0167 (9)	01/86 0039
SURVEYED BY MOREAU	
SHEET 85 OF 243 SHEETS	

SCALE 1" = 10 FEET