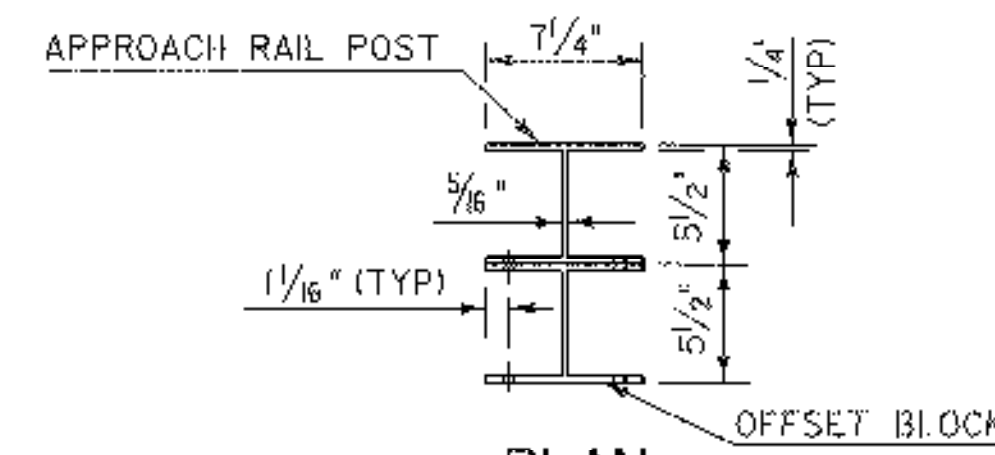


PLAN



PLAN

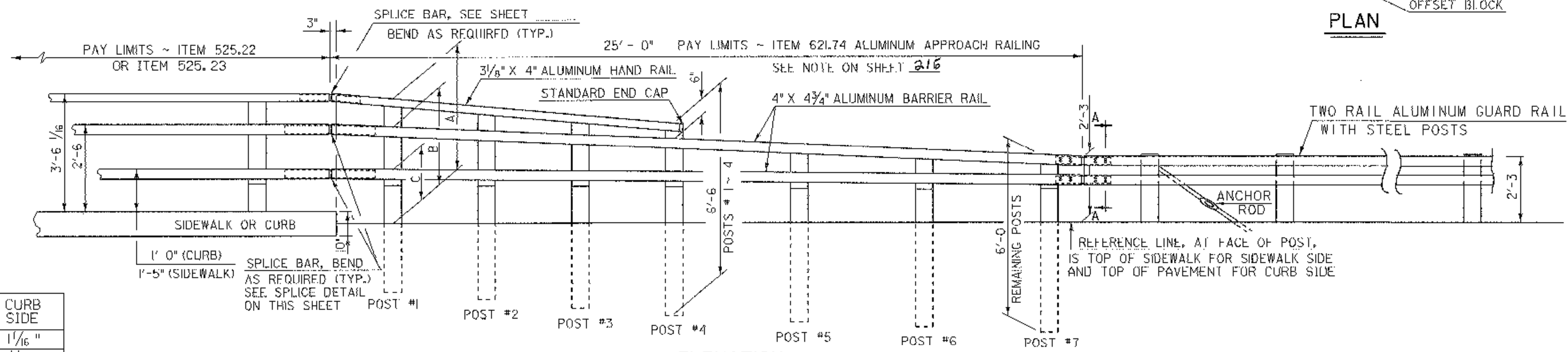
POST NO.	RAIL HEIGHT DIMENSIONS			OFFSET BLOCK DIMENSIONS			
	A	B	C	D	E	F	G
1	4'-1 15/16	3'-2 15/16	1'-9 3/8	0'-11 7/16	1'-5 9/16	2'-9 1/2	
2	3'-10 5/8	3'-1 5/16	1'-0 7/16	0'-9 3/4	1'-4 7/8	2'-7 3/16	
3	3'-7 3/8	2'-11 1/2	1'-7 1/2	0'-8 1/8	1'-4 3/16	2'-4 13/16	
4	3'-4 1/16	2'-10 1/16	1'-6 9/16	0'-6 7/16	1'-3 1/2	2'-2 1/2	
5		2'-7 7/8	1'-9 5/16		1'-2 9/16		1'-7 8/16
6		2'-5 3/4	1'-4 1/16		1'-1 5/8		1'-6 5/8
7		2'-3 9/16	1'-2 13/16		1'-0 3/4		1'-5 3/4

ALL REMAINING POSTS ARE TO HAVE THE SAME DIMENSIONS AS POST NO. 7

**ALUMINUM APPROACH RAIL DIMENSIONS FOR A CURB CONDITION WITH TWO RAIL ALUMINUM APPROACH**

**NOTES**

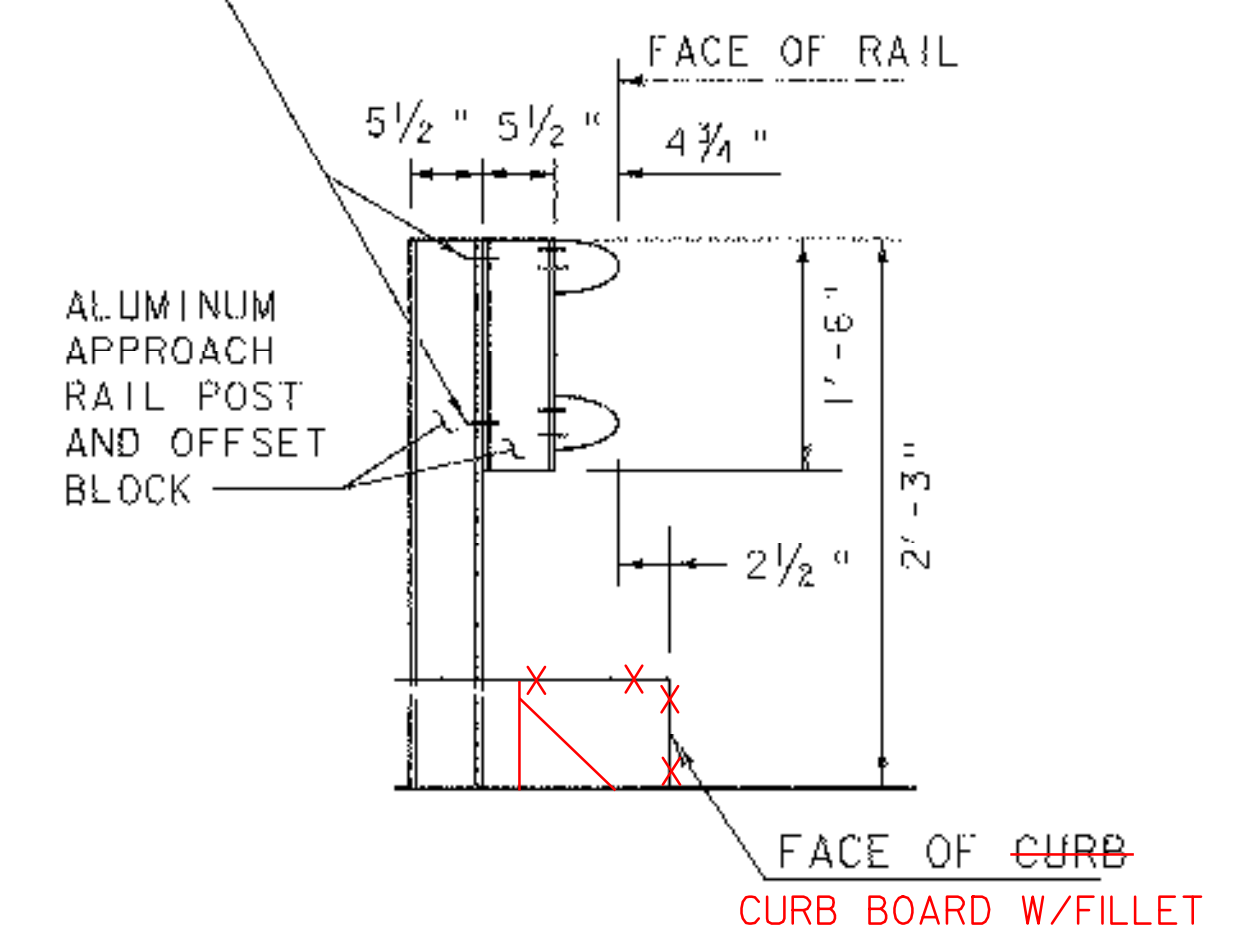
- SEE NOTES AND DETAILS ON SHEET BR123A FOR THREE RAIL ALUMINUM APPROACH RAILINGS, AND FOR TWO RAIL GUARDRAIL RAILING.



ELEVATION

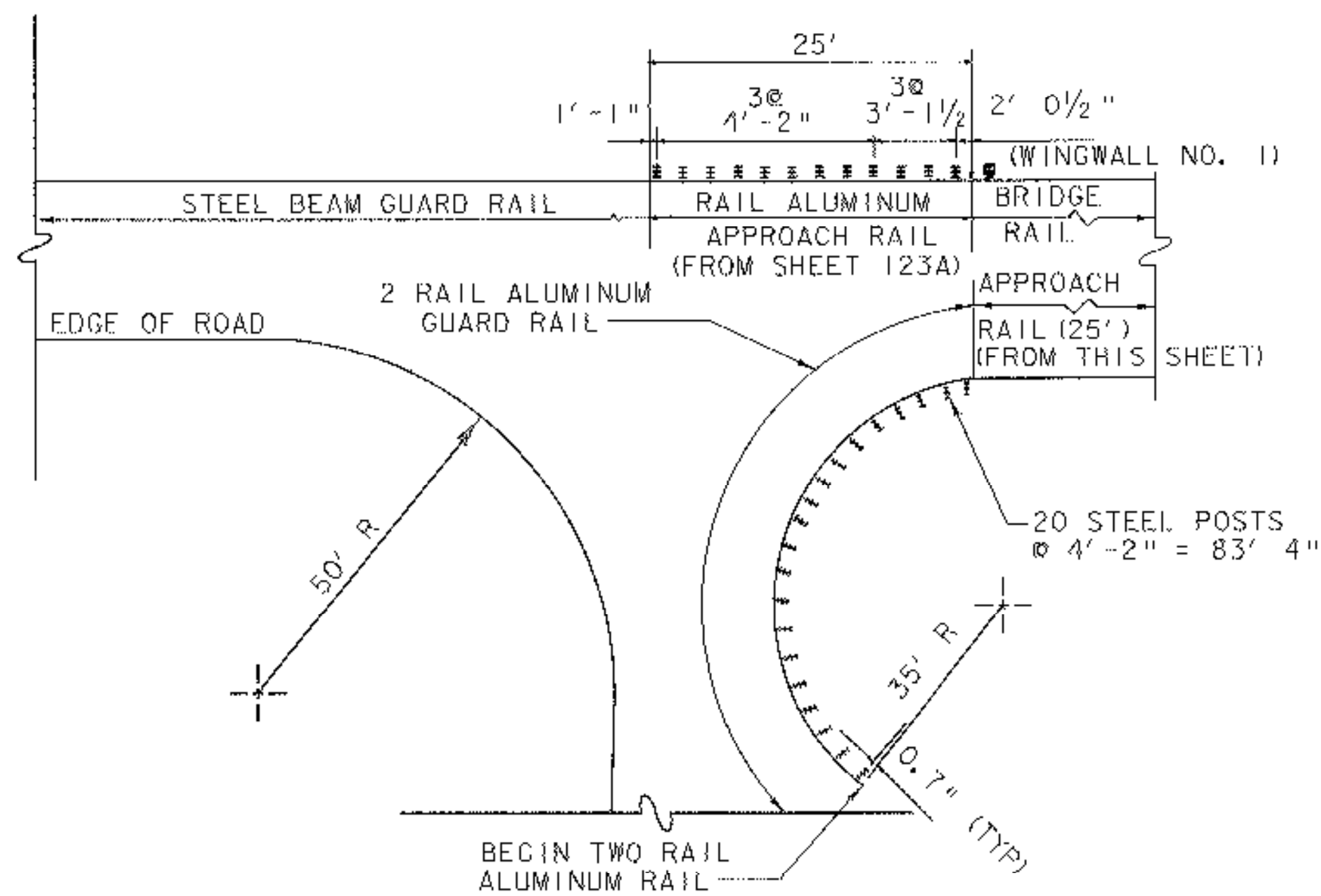
CURB SIDE	
"X"	1/16"
"Y"	1/2"
"Z"	5/16"

ATTACH OFFSET BLOCK TO POST WITH 1/2"-13 UNC X 1 1/2" LONG STAINLESS STEEL HEX HEAD BOLTS, NUTS AND WASHERS. 6 BOLTS PER POST, POSTS 1 THRU 4; 4 BOLTS PER POST, POSTS 5 THRU 6.

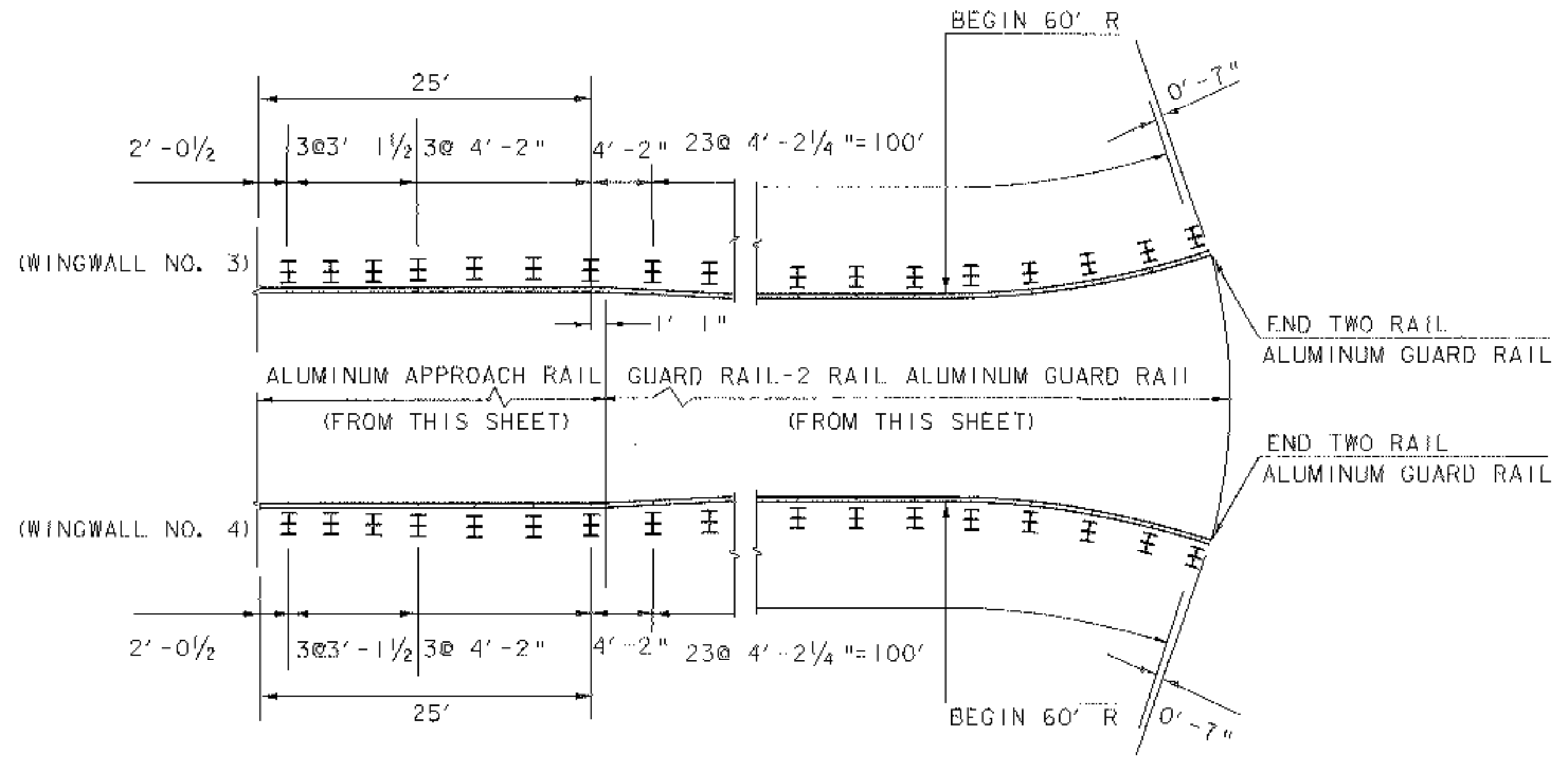


SIDE ELEVATION

**TWO RAIL ALUMINUM GUARD RAIL AND OFFSET BLOCK**



APPROACH FROM WEST END OF BRIDGE (MORETOWN END)



APPROACH FROM EAST END OF BRIDGE (MIDDLESEX END)

**STATE OF VERMONT AGENCY OF TRANSPORTATION**

Town Of <b>MORETOWN/MIDDLESEX</b>	Bridge No. <b>8</b>
Highway No. <b>VT ROUTE 100B</b>	Log Sta. <b>Surv. Sta.</b>
<b>OVER THE WINOSKI RIVER</b>	
<b>ALUM. APPROACH RAILING DETAILS FOR 2 RAIL ALUMINUM</b>	
Designed By <b>VTrans</b>	Drawn By <b>J. SCOTT</b>
Checked By <b>S. FARNSWORTH</b>	Bridge Design Supervisor <b>Date 1/2000</b>
PROJECT <b>MORETOWN/MIDDLESEX</b>	PROJECT NO. <b>BRS 0167(III)</b>
I.G.C. info. <b>844058\0505Bard.dgn</b>	Sheet <b>2-16</b> of <b>243</b>