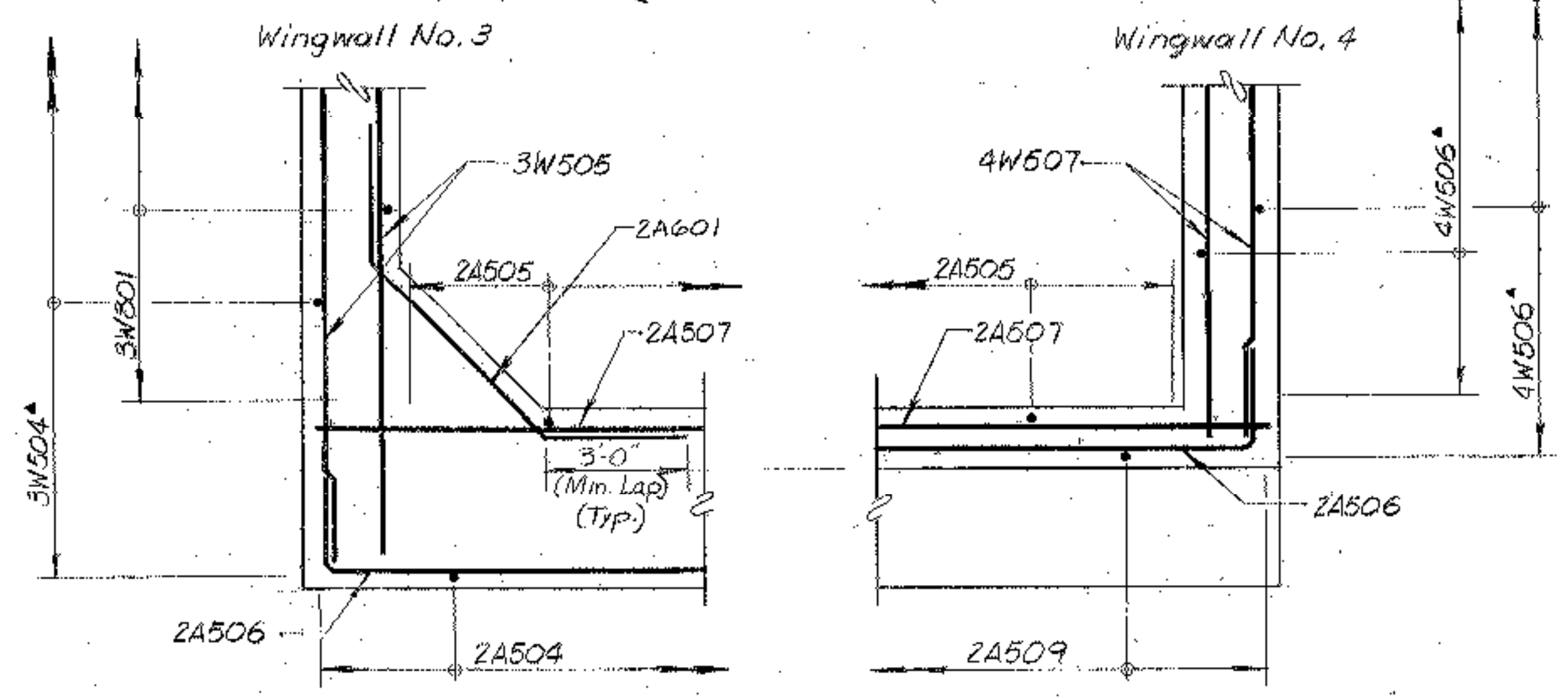
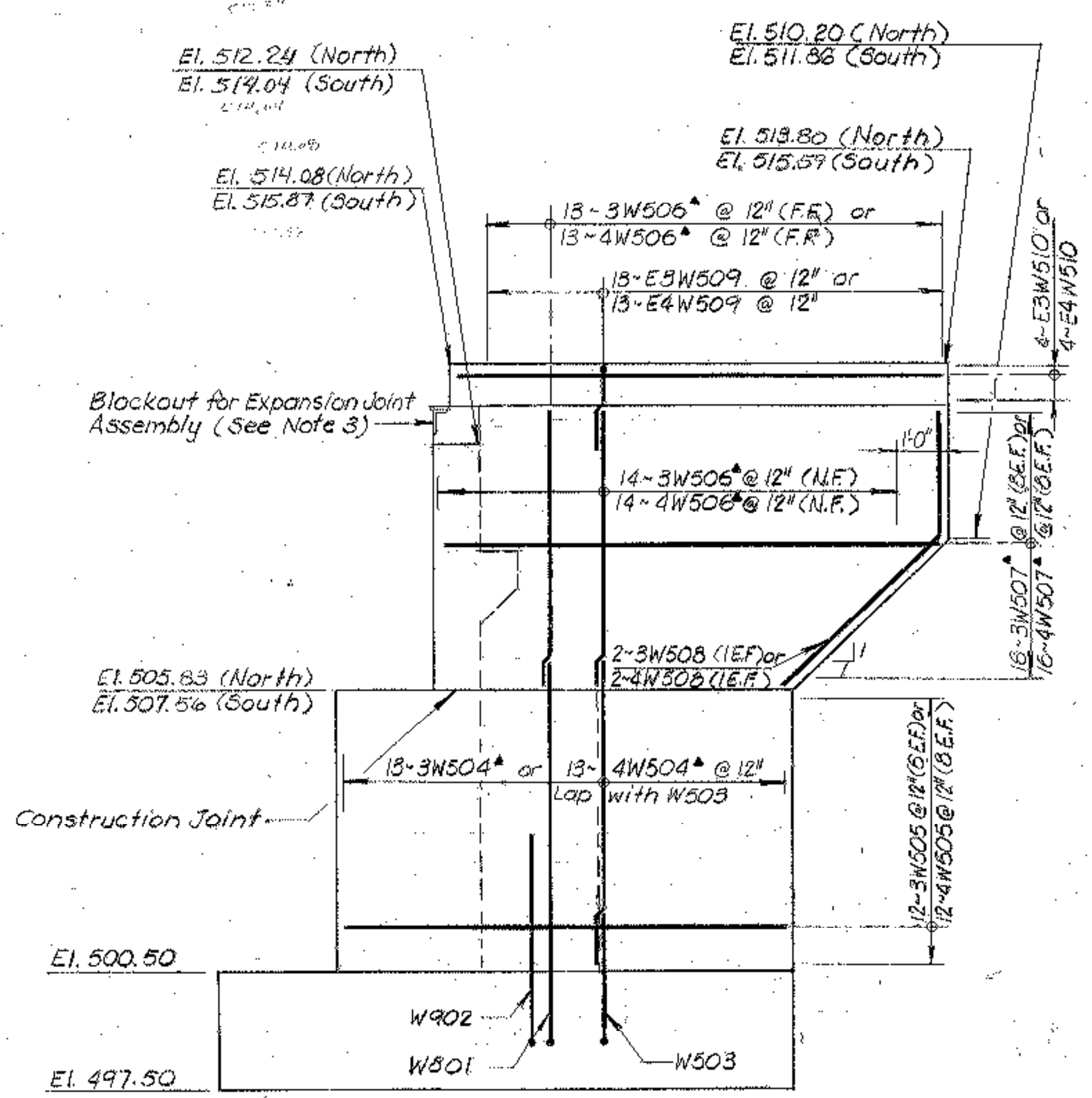


**TYPICAL WINGWALL SECTION**  
Scale: 3/8" = 1'-0"



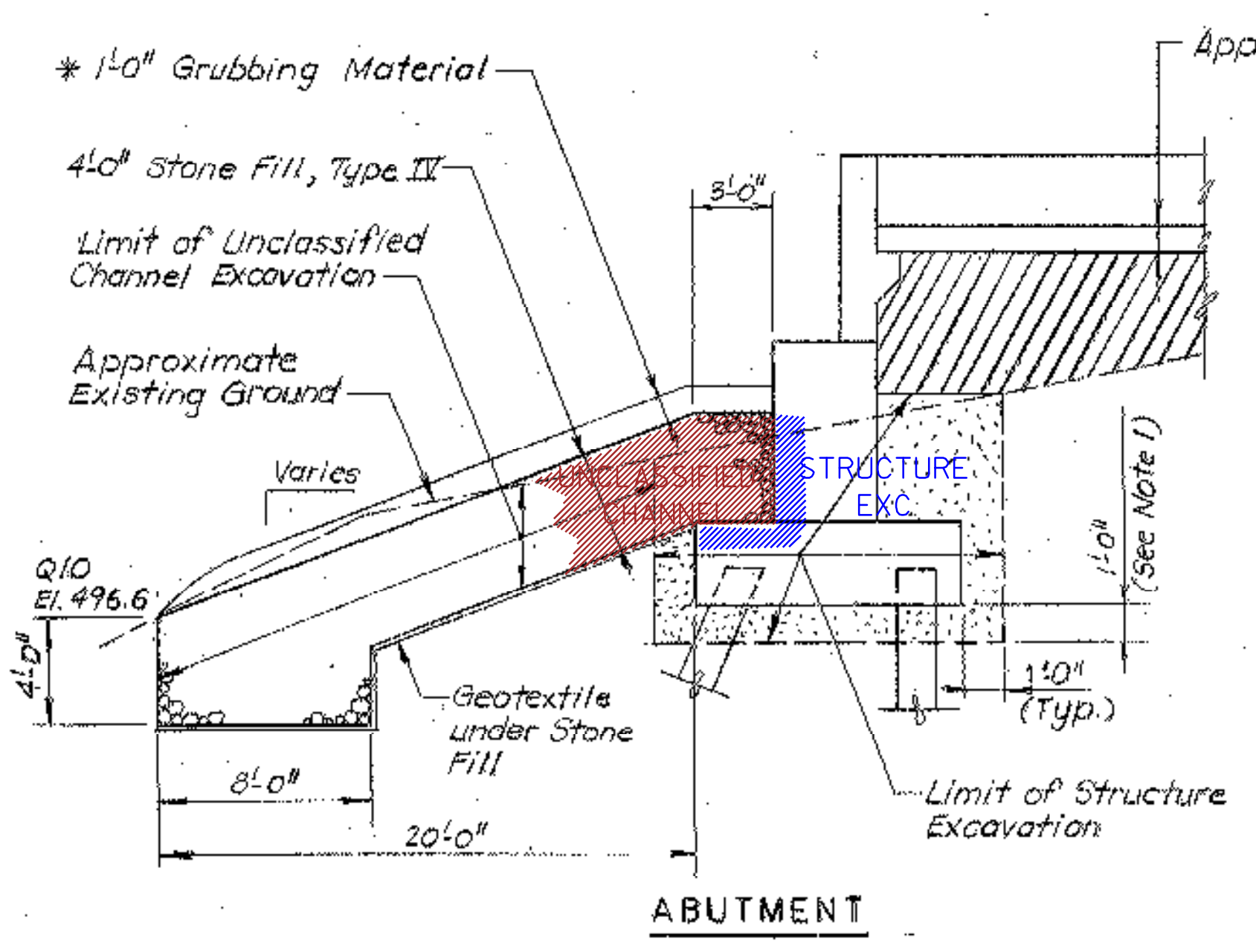
**CORNER DETAILS**  
Scale: 3/8" = 1'-0"

- LEGEND**
- NF - Near Face
  - FF - Far Face
  - EF - Each Face
  - Dig - Drill and Grout
  - ▲ - Cut to fit in the field

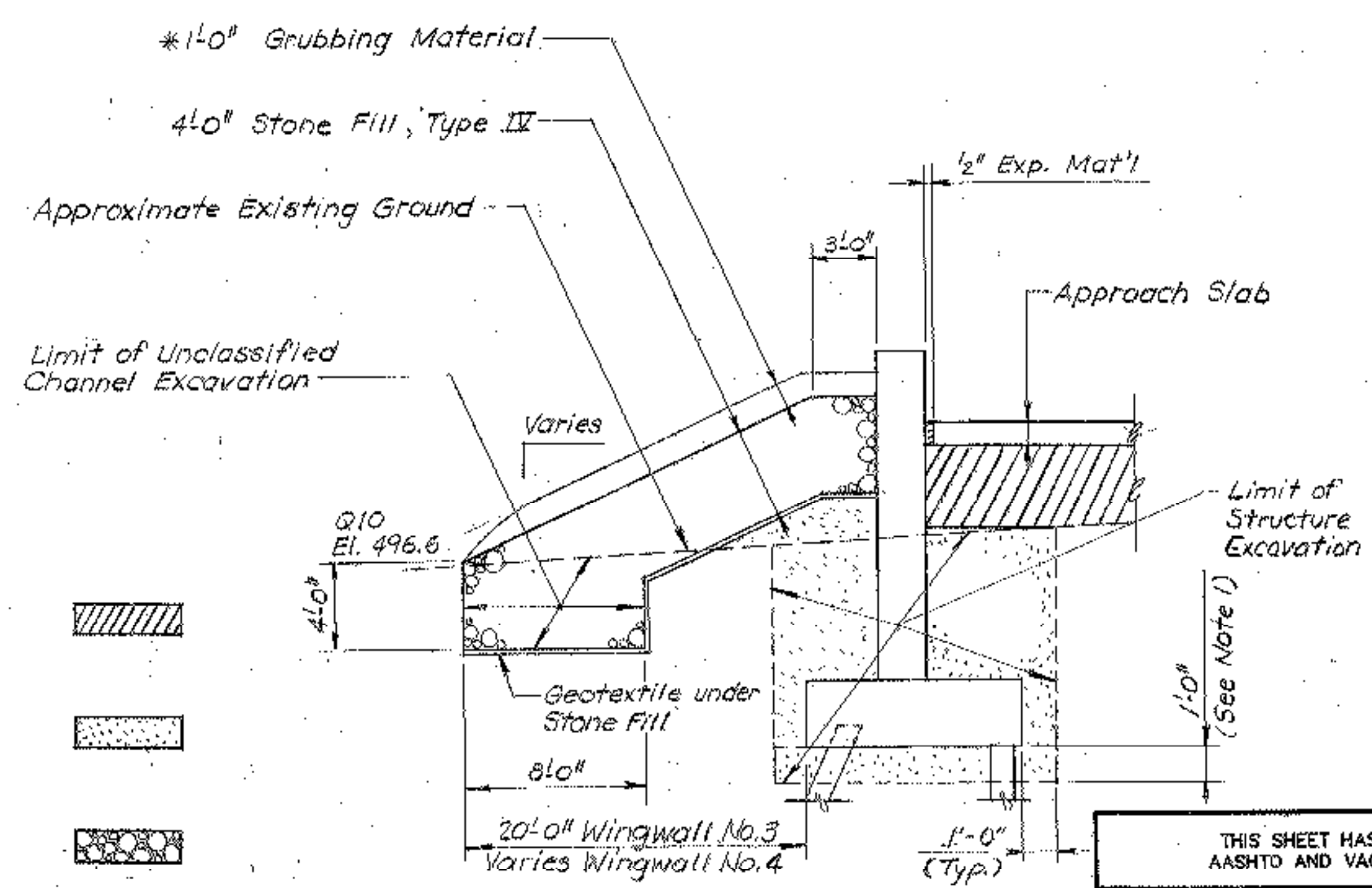


**WINGWALL ELEVATION**  
Scale: 3/8" = 1'-0"

- NOTES:**
- THE EAST ABUTMENT SHALL BE CONSTRUCTED ON A 1'-0" LAYER OF GRANULAR BACKFILL FOR STRUCTURES, WHICH SHALL BE COMPACTED TO 98% DENSITY, AS SPECIFIED IN SECTION 208.11(D).
  - FOR WINGWALL CURB LAYOUT; SEE DECK REINFORCEMENT PLAN, BRIDGE SHEET NO. BR108.
  - ▲ DENOTES REINFORCEMENT TO BE CUT TO FIT IN FIELD.
- PILE NOTES:**
- THE FOLLOWING ARE PILE SYMBOLS. THE PILES SHALL BE BATTERED IN THE DIRECTION OF THE ARROW.
  - ALL PILES SHALL BE DRIVEN TO REFUSAL ON LEDGE. ESTIMATE PILE LOAD: 35'.
  - ESTIMATE OF PILES REQUIRED: 25 - HP12X53.



**ABUTMENT**



**WINGWALL**

Note: \* Grubbing Material Should Not Be Placed On The Stone Fill In The Area Under The Bridge. Whenever Channel Slope Intersects Roadway Subbase, Grubbing Material Shall Begin At The Bottom Of Subbase.

**EARTHWORK DETAILS**  
N. T. S.

THIS SHEET HAS BEEN REVISED TO REFLECT 1993 AASHTO AND VAOT SPECIFICATIONS AND STANDARDS

REVISED DESIGN BY: R. KELM      DRAWN BY: G. SAUCIER  
 CHECKED BY: J. PATUSKY      DATE: 6/95

**BETTIGOLE ANDREWS & CLARK, INC.**  
Consulting Engineers

**ANDREWS & CLARK, INC.**  
Consulting Engineers

STATE OF VERMONT AGENCY OF TRANSPORTATION	
Town Of MORETOWN / MIDDLESEX	Bridge No.
Highway No. VT. RTE. 100B	Log Sta.
	Surv. Sta. 212+00
OVER THE WINOOSKI RIVER	
EAST ABUTMENT DETAILS	
Designed By RLJ	Drawn By NJC
Checked By DMN	Date 12-86
Bridge Design Supervisor CDB	
	Date 7-87
<b>PROJECT</b> MORETOWN / MIDDLESEX	<b>PROJECT NO.</b> BRS 0167 (II)
I.C.C. Info.	
Bridge Sheet No. BR117	Sheet 210 of 243