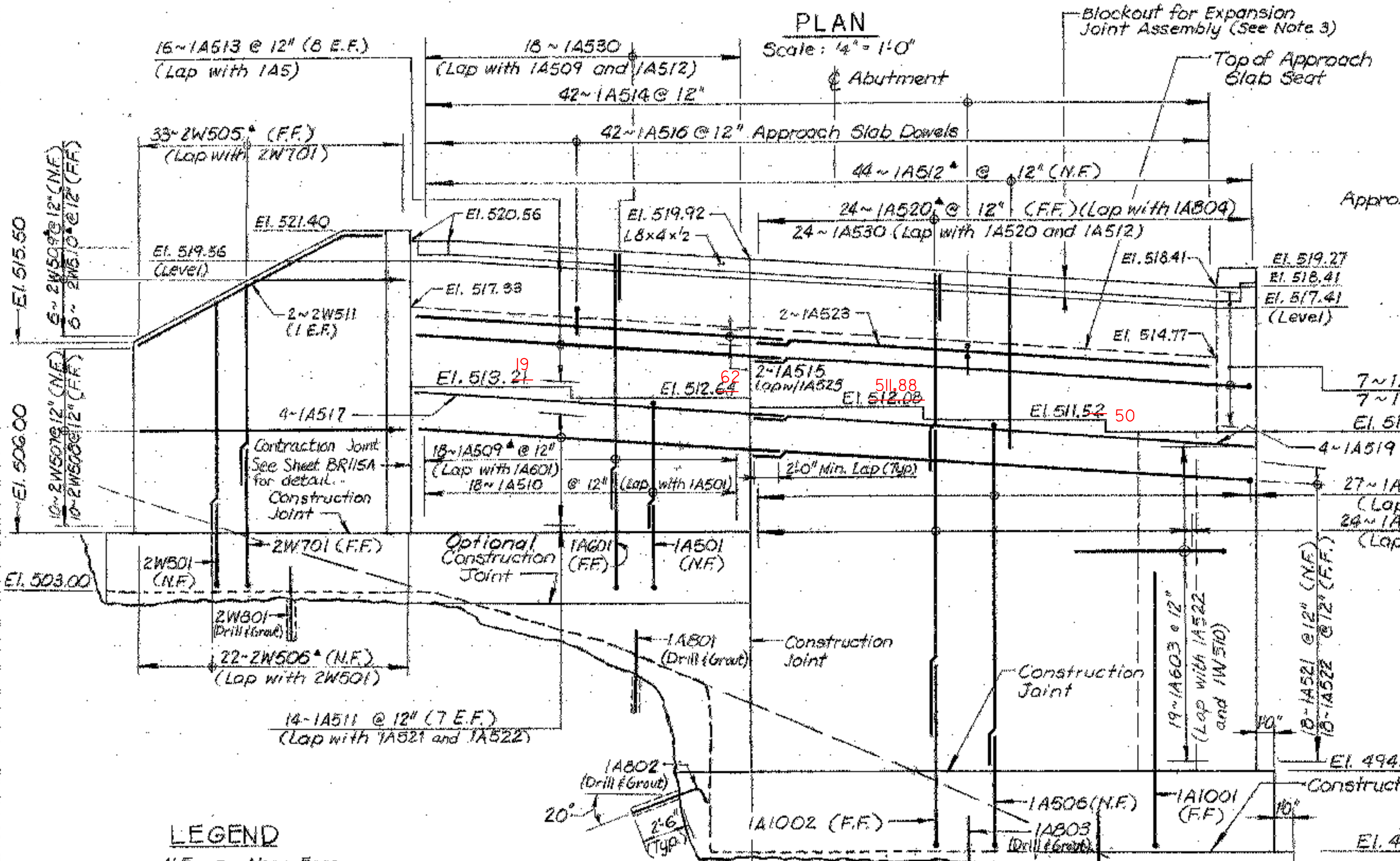


**NEED 19'-4" APPROACH SLAB SEAT ONLY AT WINGWALL # 2 TO MAKE ROOM FOR GUARDRAIL POST.

PLAN

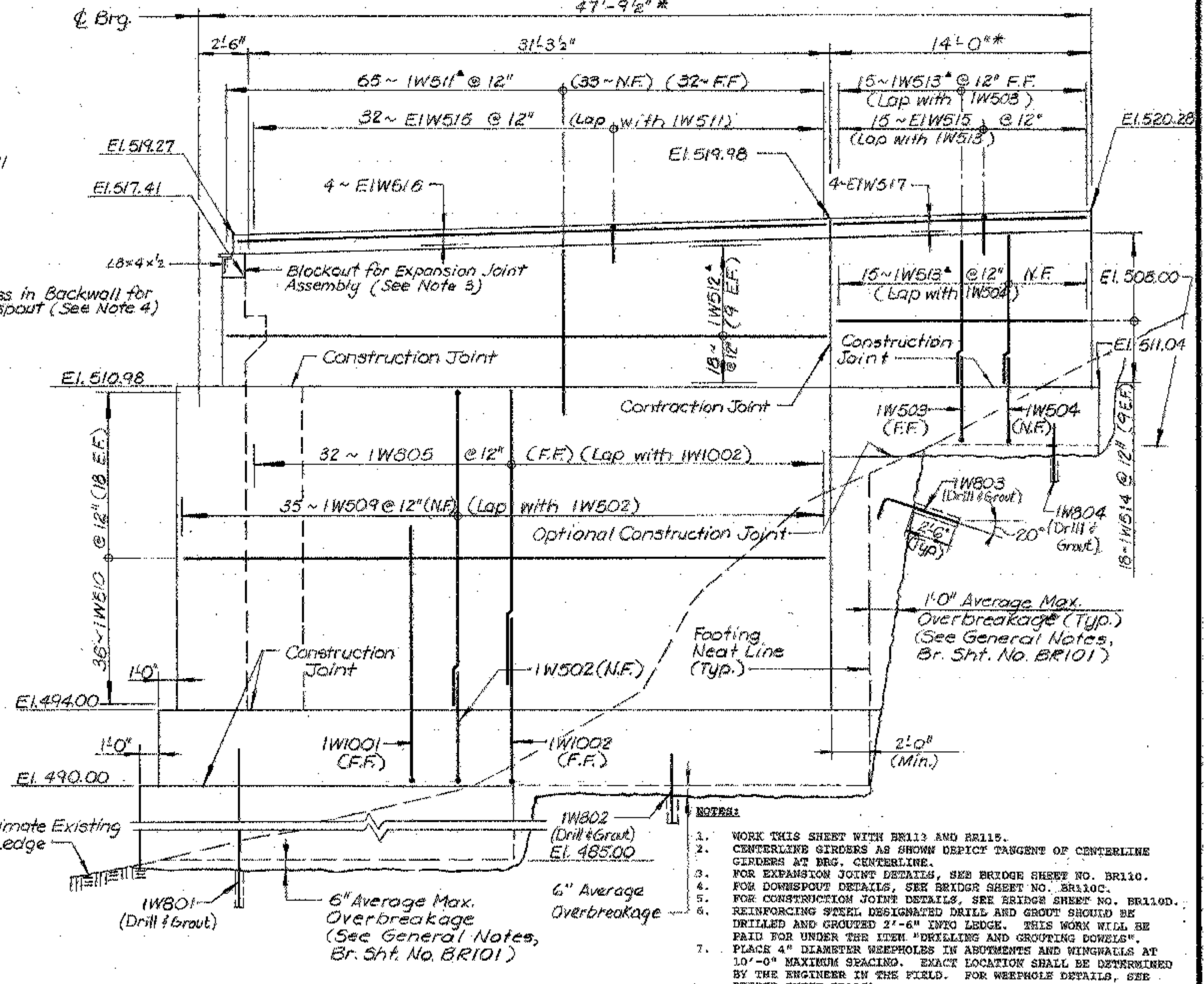
Scale: 4" = 1'-0"



ELEVATION

Scale: 4" = 1'-0"

- LEGEND**
- N.F. - Near Face
 - F.F. - Far Face
 - E.F. - Each Face
 - D & G - Drill and Grout
 - ▲ - Cut to fit in the field

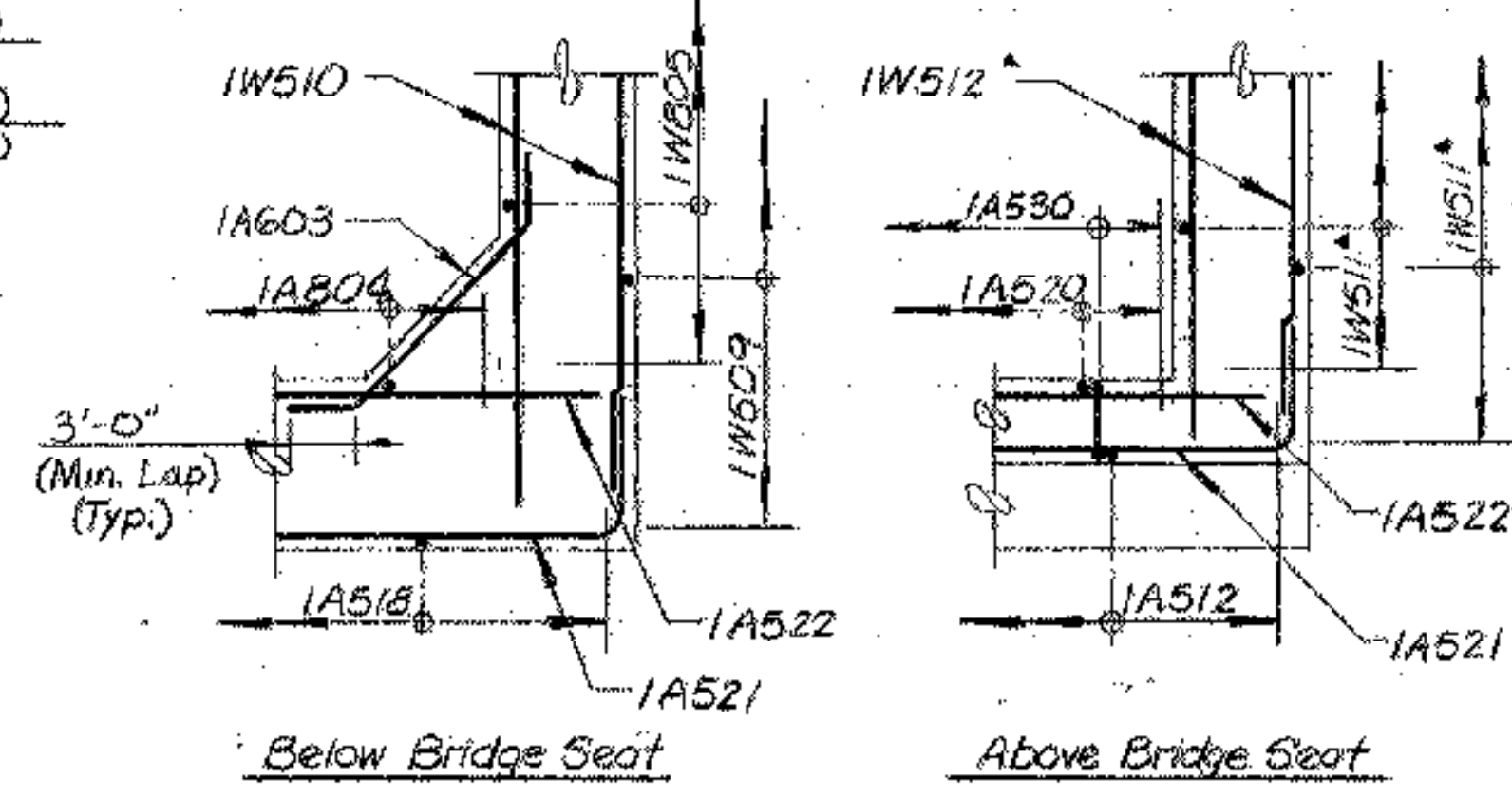


N.W. WINGWALL ELEVATION

Scale: 4" = 1'-0"

- NOTES:**
1. WORK THIS SHEET WITH BR113 AND BR115.
 2. CENTERLINE GIRDERS AS SHOWN DEPICT TANGENT OF CENTERLINE GIRDERS AT BRG. CENTERLINE.
 3. FOR EXPANSION JOINT DETAILS, SEE BRIDGE SHEET NO. BR110.
 4. FOR DOWNSPOUT DETAILS, SEE BRIDGE SHEET NO. BR100.
 5. FOR CONSTRUCTION JOINT DETAILS, SEE BRIDGE SHEET NO. BR100.
 6. REINFORCING STEEL DESIGNATED DRILL AND GROUT SHOULD BE DRILLED AND GROUTED 2'-6" INTO LEDGE. THIS WORK WILL BE PAID FOR UNDER THE ITEM "DRILLING AND GROUTING DOWELS".
 7. PLACE 2" DIAMETER WEEPHOLES IN ABUTMENTS AND WINGWALLS AT 10'-0" MAXIMUM SPACING. EXACT LOCATION SHALL BE DETERMINED BY THE ENGINEER IN THE FIELD. FOR WEEPHOLE DETAILS, SEE BRIDGE SHEET BR115A.

* Denotes Radial Lengths



CORNER DETAILS (Wingwall No. 1)

SEA SEA Consultants Inc. Science/Engineering/Architecture
CAMBRIDGE, MASSACHUSETTS ROCKY HILL, CONNECTICUT
DORCHESTER, NEW HAMPSHIRE ROCHESTER, NEW YORK

ANDREWS & CLARK, INC.
Consulting Engineers

THIS SHEET HAS BEEN REVISED TO REFLECT 1993 AASHTO AND VAOT SPECIFICATIONS AND STANDARDS	
REVISED DESIGN BY: R. KELM	DRAWN BY: S. SAUCIER
CHECKED BY: J. PAUSKY	DATE: 6/95
BETTIGOLE ANDREWS & CLARK, INC. Consulting Engineers	
STATE OF VERMONT AGENCY OF TRANSPORTATION	
Town Of MORETOWN / MIDDLESEX	Bridge No.
Highway No. VT. RTE. 100B	Log Sta. 212+00
OVER THE WINOOSKI RIVER	
WEST ABUTMENT MASONRY & REINF.	
Designed By RLJ	Drawn By BJAN
Checked By JPH Date 12-86	Bridge Design Supervisor CDB Date 7-87
PROJECT MORETOWN/MIDDLESEX	PROJECT NO. BRS 0167 (11)
I.S.C. Info.	
Bridge Sheet No. BR114	Sheet 206 of 243