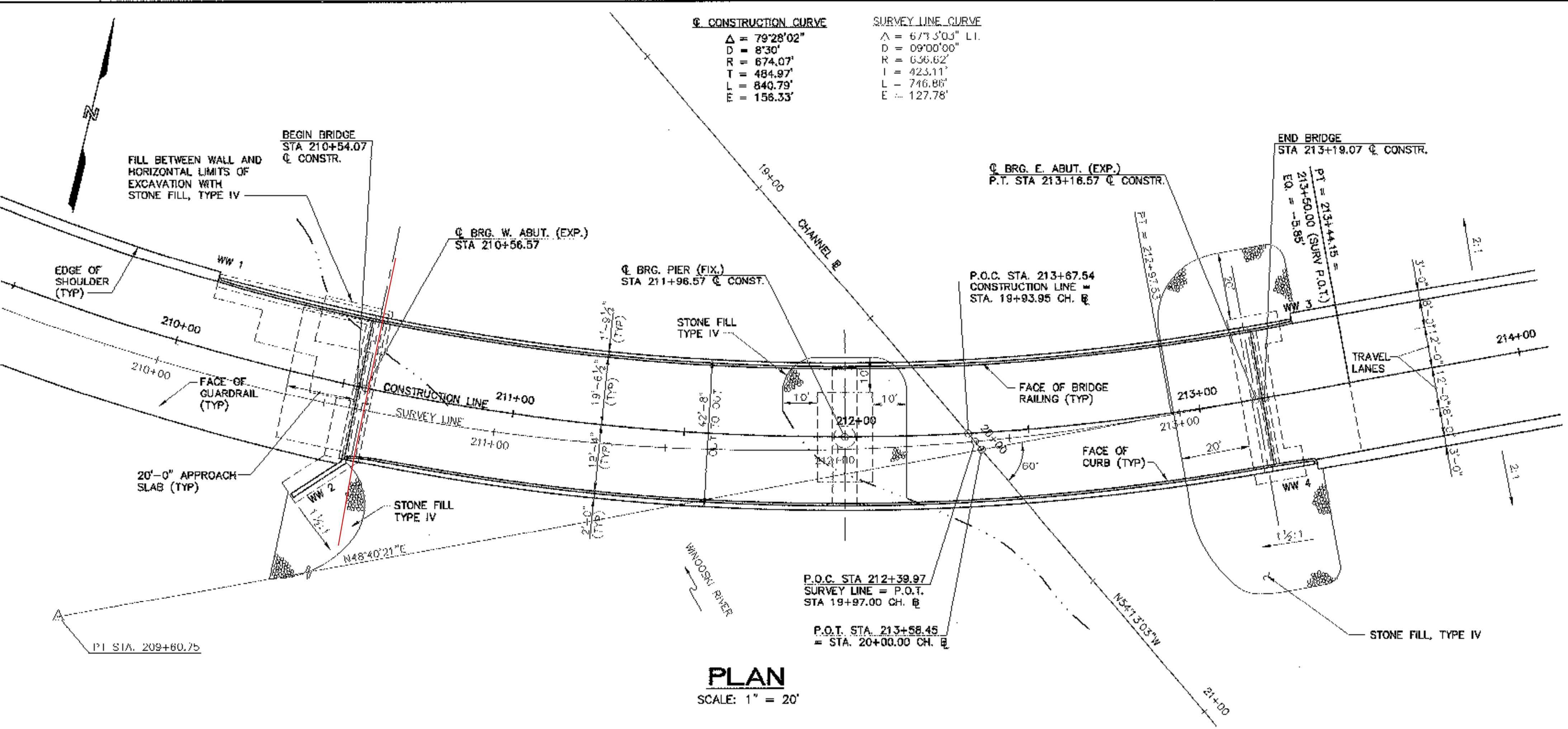
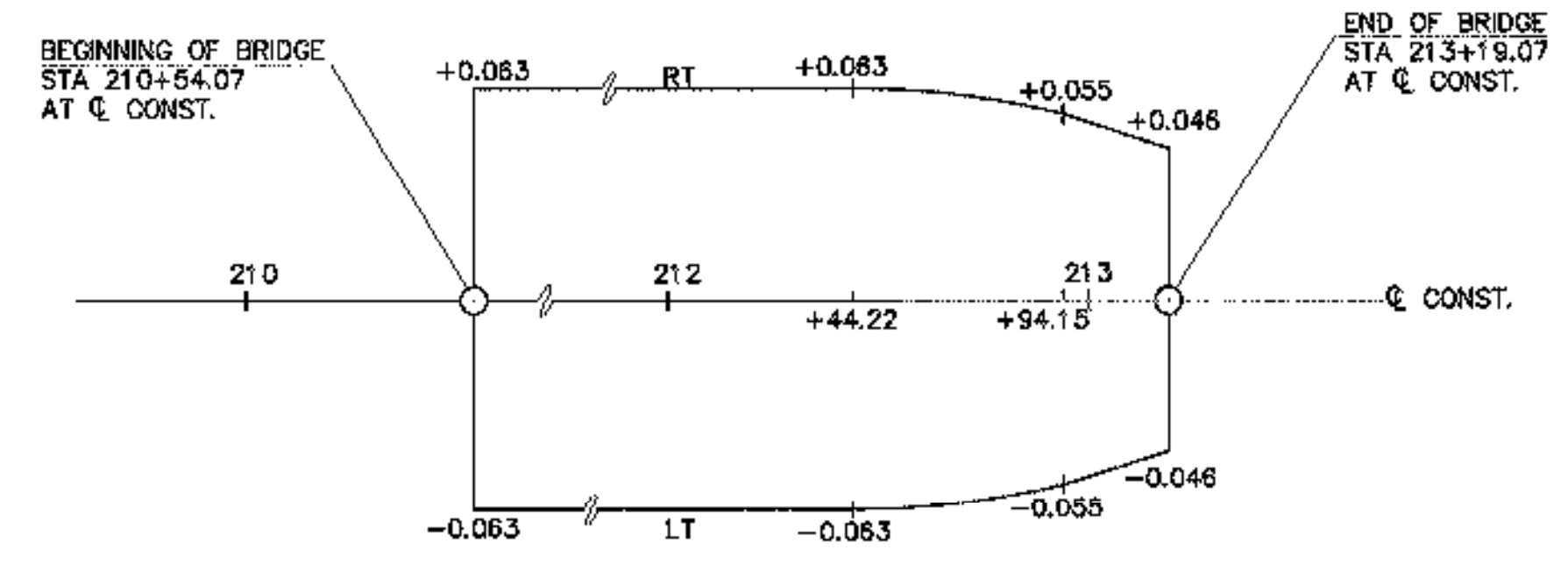


CONSTRUCTION CURVE	SURVEY LINE CURVE
$\Delta = 79^{\circ}28'02''$	$\Delta = 67^{\circ}3'03''$ L.I.
$D = 8'30''$	$D = 09^{\circ}00'00''$
$R = 674.07'$	$R = 656.62'$
$T = 484.97'$	$T = 423.11'$
$L = 840.79'$	$L = 746.86'$
$E = 156.33'$	$E = 127.78'$

LOCATION	SURVEY LINE	OFFSET	Q. CONST.	FIN. GRADE Q. CONST.
BEGIN BRIDGE	210+58.26	6.58' LT.	210+54.07	519.66
Q. BRG. W. ABUT.	210+61.03	6.54' LT.	210+56.57	519.61
Q. BRG. PIER	212+02.16	3.55' LT.	211+96.57	516.58
Q. BRG. E. ABUT.	213+22.42	0	213+16.57	514.17
END BRIDGE	213+25.17	0	213+19.07	514.11

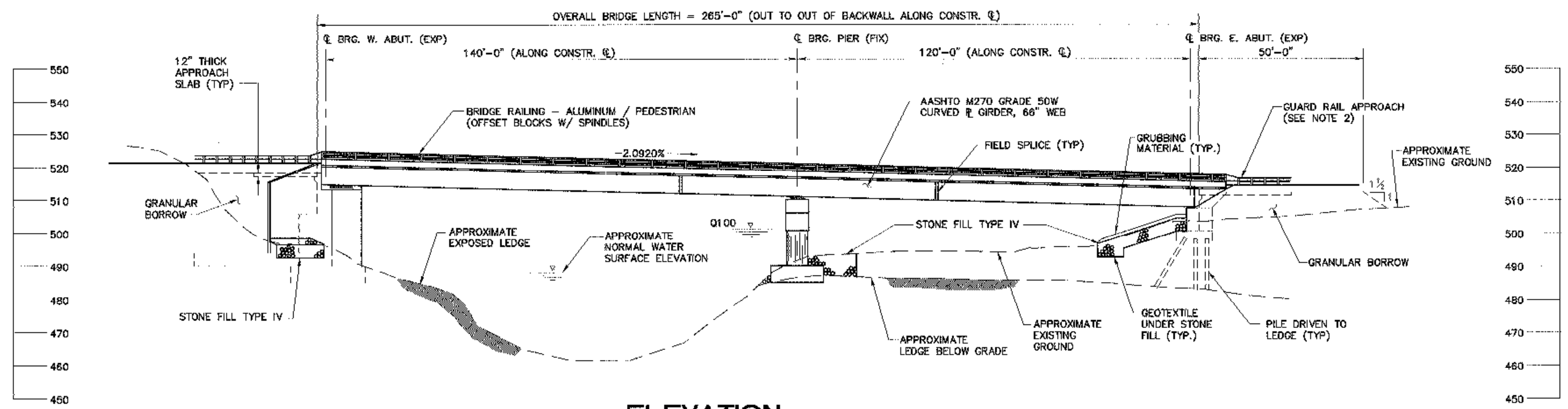


**PLAN**  
SCALE: 1" = 20'



**BANKING TRANSITION**

- NOTE:**
- FOR BENCH MARK AND BRIDGE PLAQUE DETAIL, SEE BRIDGE SHEET NO. BR1100.
  - GUARD RAIL APPROACH - THREE RAIL ALUMINUM TO TWO RAIL ALUMINUM, EXCEPT AT WINGWALL NO. 1, WHERE THREE RAIL ALUMINUM TO STEEL BEAM GUARDRAIL IS TO BE USED.



**ELEVATION**  
SCALE: 1" = 20'

THIS SHEET HAS BEEN REVISED TO REFLECT 1993 AASHTO AND VAOT SPECIFICATIONS AND STANDARDS

REVISED DESIGN BY: R. KELM DRAWN BY: S. BELANGER  
 CHECKED BY: J. PATUSKY DATE: 5/95

**BETTIGOLE ANDREWS & CLARK, INC.**  
Consulting Engineers

**STATE OF VERMONT**  
**AGENCY OF TRANSPORTATION**

CITY OF MORETOWN / MIDDLESEX	BRIDGE NO. LOG STA.
STREET NAME VT. RTE. 100B	SURV. STA. 212+00

OVER THE WINOOKSI RIVER

**PLAN AND ELEVATION**

DESIGNED BY R. KELM	DRAWN BY S. BELANGER
CHECKED BY J. PATUSKY	BRIDGE DESIGN SUPERVISOR R. ROBERTS
DATE 9/94	DATE 9/94

PROJECT MORETOWN / MIDDLESEX PROJECT NO. BRS 0167(11)

BA&C DRAWING NO. 94030-30/1-20 DATE 5/3/95  
 BRIDGE SHEET NO. BR101 SHEET 188 OF 243

**SEA Consultants Inc.**  
Science/Engineering/Architecture  
CAMBRIDGE, MASSACHUSETTS ROCKY HILL, CONNECTICUT  
CONCORD, NEW HAMPSHIRE ROCHESTER, NEW YORK

**BETTIGOLE ANDREWS & CLARK, INC.**  
Consulting Engineers