

CONSTRUCT ACCESS DRIVE  
 REV. 198+05 LT. ~ REV. 199+30 LT. (APPROXIMATELY)  
 \* NOTE: ACTUAL LOCATION OF PROPOSED ACCESS  
 FOR DAM TO BE DETERMINED BY THE  
 ENGINEER UPON CONSTRUCTION

BM  
 VTAT DISK  
 "DAM ONE"  
 ELEV. 505.555'

REV. CURVE #3 PI 201+23.23 =  
 201+20.75  
 SURV. CURVE #3 PI 201+47.39 =  
 201+46.36

SURV. CURVE # 4 DATA  
 $\Delta = 67^{\circ}13'-03''$  LT.  
 $D = 9''$   
 $R = 636.62'$   
 $T = 423.11'$   
 $L = 746.86'$   
 $E = 127.78'$

REV. CURVE # 4 DATA  
 $\Delta = 71^{\circ}28'-02''$  LT.  
 $D = 8'-30''$   
 $R = 674.07'$   
 $T = 484.97'$   
 $L = 840.79'$   
 $E = 156.33'$   
 FULL BANK = 0.063 FT/FT

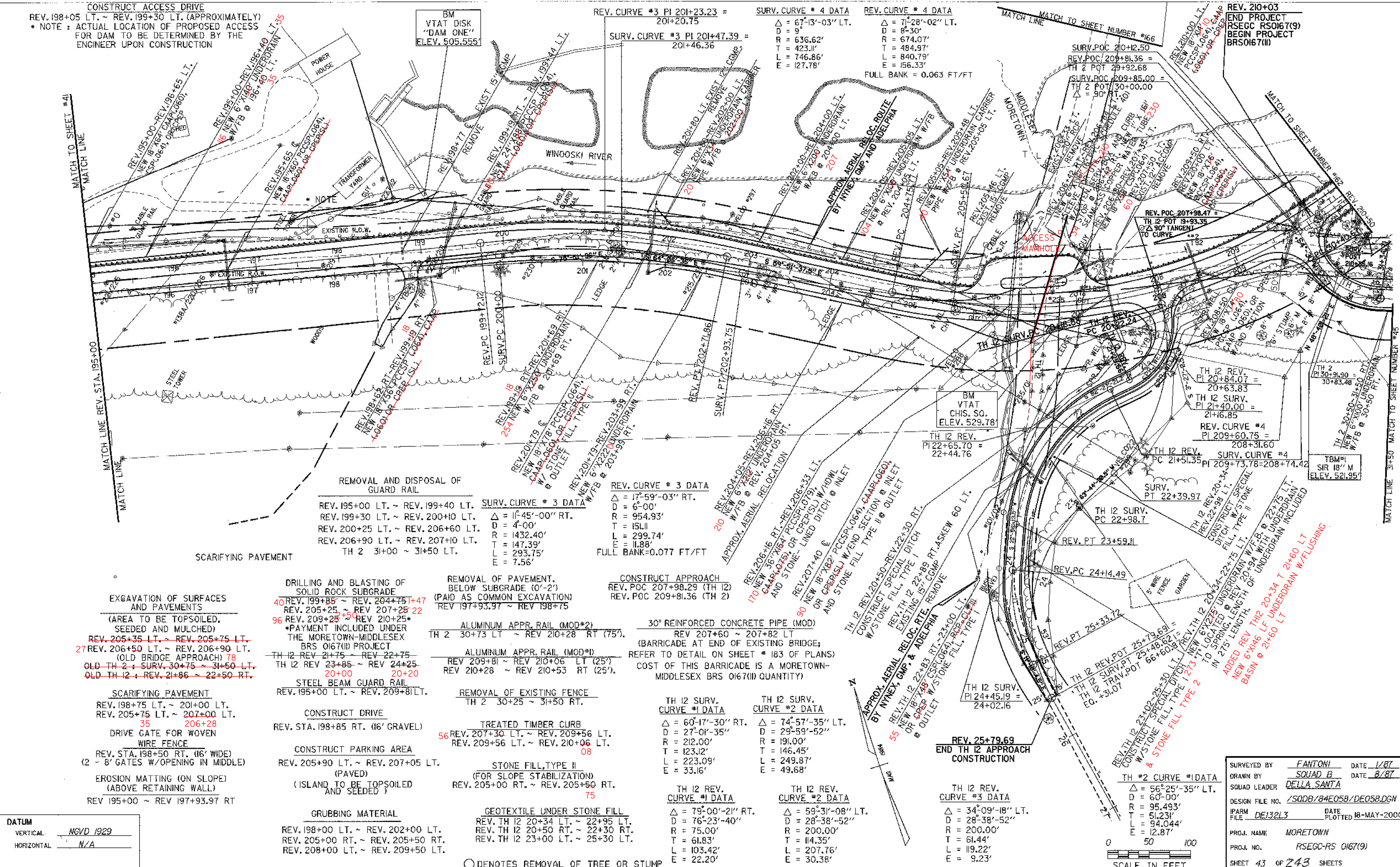
REV. 210+03  
 END PROJECT  
 RSEGC R50167(9)  
 BEGIN PROJECT  
 BR50167(III)

MATCH TO SHEET #41

MATCH LINE

MATCH TO SHEET NUMBER #62

MATCH LINE 3150 MATCH TO SHEET NUMBER #45



REMOVAL AND DISPOSAL OF GUARD RAIL

REV. 195+00 LT. ~ REV. 199+40 LT.	SURV. CURVE # 3 DATA
REV. 199+30 LT. ~ REV. 200+10 LT.	$\Delta = 17^{\circ}59'-03''$ RT.
REV. 200+25 LT. ~ REV. 206+60 LT.	$D = 6'-00''$
REV. 206+90 LT. ~ REV. 207+10 LT.	$R = 954.93'$
TH 2 31+00 ~ 31+50 LT.	$T = 151.11'$
	$L = 299.74'$
	$E = 11.88'$
	FULL BANK=0.077 FT/FT

SCARIFYING PAVEMENT

EXCAVATION OF SURFACES AND PAVEMENTS  
 (AREA TO BE TOPSOILED, SEEDED AND MULCHED)  
 REV. 205+35 LT. ~ REV. 205+75 LT.  
 27 REV. 206+50 LT. ~ REV. 206+90 LT.  
 (OLD BRIDGE APPROACH) 78  
 OLD TH 2 SURV. 30+75 ~ 31+50 LT.  
 OLD TH 12 SURV. 21+86 ~ 22+50 RT.

DRILLING AND BLASTING OF SOLID ROCK SUBGRADE  
 40 REV. 199+85 ~ REV. 204+75+47  
 96 REV. 205+25 ~ REV. 207+25  
 \*PAYMENT INCLUDED UNDER THE MORETOWN-MIDDLESEX BRS 0167(III) PROJECT  
 TH 12 REV. 21+75 ~ REV. 22+75  
 TH 12 REV. 23+85 ~ REV. 24+25  
 20+00 20+20  
 STEEL BEAM GUARD RAIL  
 REV. 195+00 LT. ~ REV. 209+81 LT.

REMOVAL OF PAVEMENT, BELOW SUBGRADE (0'-2') (PAID AS COMMON EXCAVATION)  
 REV. 197+93.97 ~ REV. 198+75  
 ALUMINUM APPR. RAIL (MOD\*2)  
 TH 2 30+73 LT. ~ REV. 210+28 RT (75%).  
 ALUMINUM APPR. RAIL (MOD\*1)  
 REV. 209+81 ~ REV. 210+06 LT (25%)  
 REV. 210+28 ~ REV. 210+53 RT (25%).

CONSTRUCT APPROACH  
 REV. POC 207+98.29 (TH 12)  
 REV. POC 209+81.36 (TH 2)  
 30" REINFORCED CONCRETE PIPE (MOD)  
 REV. 207+60 ~ 207+82 LT  
 (BARRICADE AT END OF EXISTING BRIDGE; REFER TO DETAIL ON SHEET # 183 OF PLANS)  
 COST OF THIS BARRICADE IS A MORETOWN-MIDDLESEX BRS 0167(III) QUANTITY)

TH 12 SURV. CURVE #1 DATA	TH 12 SURV. CURVE #2 DATA
$\Delta = 60^{\circ}17'-30''$ RT.	$\Delta = 74^{\circ}57'-35''$ LT.
$D = 27^{\circ}01'-35''$	$D = 29^{\circ}59'-52''$
$R = 212.00'$	$R = 191.00'$
$T = 123.12'$	$T = 146.45'$
$L = 223.09'$	$L = 249.87'$
$E = 33.16'$	$E = 49.68'$

TH 12 REV. CURVE #1 DATA	TH 12 REV. CURVE #2 DATA
$\Delta = 79^{\circ}00'-21''$ RT.	$\Delta = 59^{\circ}31'-08''$ LT.
$D = 76^{\circ}23'-40''$	$D = 28^{\circ}38'-52''$
$R = 75.00'$	$R = 200.00'$
$T = 61.83'$	$T = 114.35'$
$L = 103.42'$	$L = 207.76'$
$E = 22.20'$	$E = 30.38'$

SCARIFYING PAVEMENT  
 REV. 198+75 LT. ~ 201+00 LT.  
 REV. 205+75 LT. ~ 207+00 LT.  
 35 206+28  
 DRIVE GATE FOR WOVEN WIRE FENCE  
 REV. STA. 198+50 RT. (16' WIDE)  
 (2 - 8' GATES W/ OPENING IN MIDDLE)  
 EROSION MATTING (ON SLOPE) (ABOVE RETAINING WALL)  
 REV. 195+00 ~ REV. 197+93.97 RT

CONSTRUCT DRIVE  
 REV. STA. 198+85 RT. (16' GRAVEL)  
 CONSTRUCT PARKING AREA (PAVED)  
 REV. 205+90 LT. ~ REV. 207+05 LT.  
 (ISLAND TO BE TOPSOILED AND SEEDED)

REMOVAL OF EXISTING FENCE  
 TH 2 30+25 ~ 31+50 RT.  
 TREATED TIMBER CURB  
 56 REV. 207+30 LT. ~ REV. 209+56 LT.  
 REV. 209+56 LT. ~ REV. 210+06 LT.  
 08  
 STONE FILL, TYPE II (FOR SLOPE STABILIZATION)  
 REV. 205+00 RT. ~ REV. 205+90 RT.  
 75

GRUBBING MATERIAL  
 REV. 198+00 LT. ~ REV. 202+00 LT.  
 REV. 205+00 RT. ~ REV. 205+50 RT.  
 REV. 208+00 LT. ~ REV. 209+50 LT.

GEOTEXTILE UNDER STONE FILL  
 REV. TH 12 20+34 LT. ~ 22+95 LT.  
 REV. TH 12 20+50 RT. ~ 22+30 RT.  
 REV. TH 12 23+00 LT. ~ 25+30 LT.

○ DENOTES REMOVAL OF TREE OR STUMP

DATUM  
 VERTICAL: NGVD 1929  
 HORIZONTAL: N/A

REV. 25+79.69  
 END TH 12 APPROACH CONSTRUCTION

TH 12 REV. CURVE #3 DATA
$\Delta = 34^{\circ}09'-18''$ LT.
$D = 28^{\circ}38'-52''$
$R = 200.00'$
$T = 61.44'$
$L = 119.22'$
$E = 9.23'$

TH #2 CURVE #1 DATA  
 $\Delta = 56^{\circ}25'-35''$  LT.  
 $D = 60'-00''$   
 $R = 95.493'$   
 $T = 51.231'$   
 $L = 94.044'$   
 $E = 12.87'$   
 0 50 100  
 SCALE IN FEET

SURVEYED BY	FANTONI	DATE	1/87
DRAWN BY	SQUAD B	DATE	8/87
SQUAD LEADER	DELLA SANTA		
DESIGN FILE NO.	/SQDB/84E058/DE058.DGN		
IPARM FILE	DE132L3	DATE PLOTTED	18-MAY-2000
PROJ. NAME	MORETOWN		
PROJ. NO.	RSEGC-RS 0167(9)		
SHEET	43	OF	243 SHEETS