

CONSTRUCT DRIVES  
REV 45+53.5 ASKEW 84°-11'-14.6" RT  
12' WIDE (GRAVEL) W/ 5' PAVED APRON  
REV 46+72.5 LT 12' WIDE (PAVED)

GUARD RAIL APPROACH SECTION, TYPE I  
REV 42+72.0 LT. ~ REV 43+21.5 LT.  
REV 43+31.5 RT. ~ REV 43+82.0 RT.  
REV 43+48.5 LT. ~ REV 43+98.0 LT.  
REV 44+11.0 RT. ~ REV 44+61.5 RT.

REMOVAL & DISPOSAL OF GUARD RAIL  
SURV 41+85 LT. ~ SURV 43+56 LT.  
SURV 43+35 RT. ~ SURV 43+85 RT.  
SURV 43+86 LT. ~ SURV 44+73 LT.  
SURV 44+14 RT. ~ SURV 44+73 RT.

MODIFIED ECCENTRIC LOADER TERMINAL  
REV 44+60.5 LT. ~ REV 44+98.0 LT.  
REV 44+99.0 RT. ~ REV 45+36.5 RT.

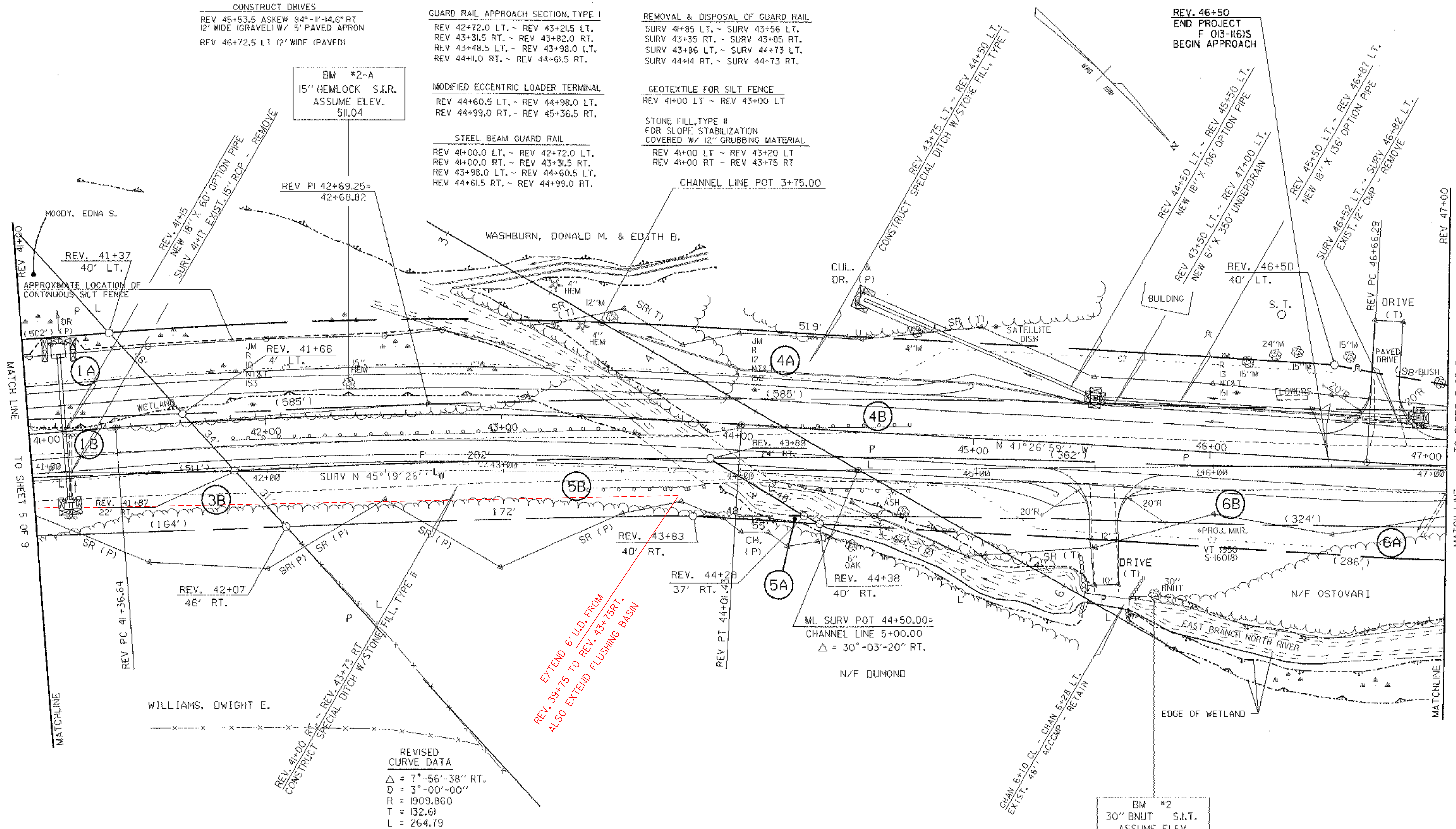
GEOTEXTILE FOR SILT FENCE  
REV 41+00 LT ~ REV 43+00 LT

STONE FILL, TYPE #  
FOR SLOPE STABILIZATION  
COVERED W/ 12" GRUBBING MATERIAL  
REV 41+00 LT ~ REV 43+20 LT  
REV 41+00 RT ~ REV 43+75 RT

STEEL BEAM GUARD RAIL  
REV 41+00.0 LT. ~ REV 42+72.0 LT.  
REV 41+00.0 RT. ~ REV 43+31.5 RT.  
REV 43+98.0 LT. ~ REV 44+60.5 LT.  
REV 44+61.5 RT. ~ REV 44+99.0 RT.

CHANNEL LINE POT 3+75.00

REV. 46+50  
END PROJECT  
F 013-K6JS  
BEGIN APPROACH



BM #2-A  
15" HEMLOCK S.I.R.  
ASSUME ELEV.  
511.04

BM #2  
30" BNUT S.I.T.  
ASSUME ELEV.  
522.08

REVISED  
CURVE DATA  
Δ = 7°-56'-38" RT.  
D = 3°-00'-00"  
R = 1909.860  
T = 132.61  
L = 264.79  
E = 4.60  
BANK = 0.053 FT / FT

EXTEND 6' U.D. FROM  
REV. 39+75 TO REV. 43+75 RT.  
ALSO EXTEND FLUSHING BASIN

DATUM  
VERTICAL \_\_\_\_\_  
HORIZONTAL \_\_\_\_\_

40' OF TREES SHOULD BE LIMITED TO THE  
JUNCTION LIMITS UNLESS THE CONSTRUCTION  
RE LESS THAN THE CLEAR ZONE.

LEGEND:  
HAY BALES [Symbol]  
SILT FENCE [Symbol]  
WETLANDS BOUNDARY [Symbol]

TEMPORARY 4" WHITE LINE  
REV 41+00 LT ~ REV 47+00 LT  
REV 41+00 RT ~ REV 47+00 RT  
4" DURABLE WHITE LINE  
REV 41+00 LT ~ REV 47+00 LT  
REV 41+00 RT ~ REV 47+00 RT

TEMPORARY 4" YELLOW LINE  
REV 41+00 ~ REV 47+00 CL (SOLID DOUBLE)  
4" DURABLE YELLOW LINE  
REV 41+00 ~ REV 47+00 CL (SOLID DOUBLE)



FOR R.O.W.  
USE ONLY

0131006 200 780244 J.D.P.  
SURVEYED BY FANTONI DATE 10-98  
DRAWN BY CRAW DATE 4-92  
SQUAD LEADER D.F. MALE  
DESIGN FILE NO. /prop/78d244/r d244zzz.dgn  
IPARM FILE 78d2442r.j DATE PLOTTED 5-MAR-1998  
WHITINGHAM  
F 013-1(6)S  
R. O. W. SHEET 6 OF 9 SHEETS  
SHEET 12 OF 61 SHEETS