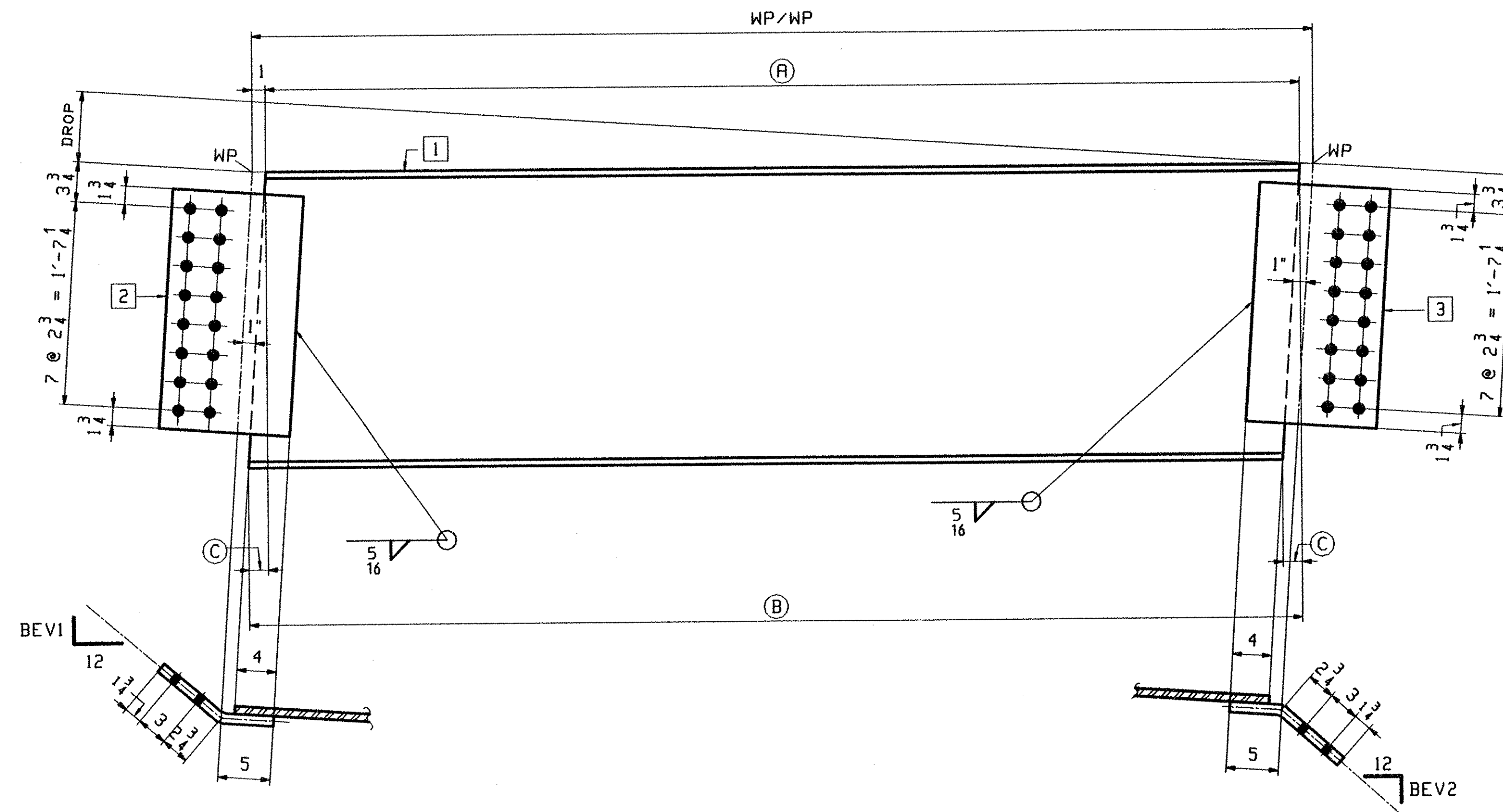


ABM INFO		SHIP	BILL OF MATERIAL				JOB NO.	DRAWING NO.	REV.
PAGE	LINE	MARK	QTY	MARK	MATERIAL	LENGTH FT INCHES	REMARKS	WT	PROCUREMENT NOTES
		21D1	1		ABUT DIAPH				726
7	M		1	a21	H 27x84	7' 8 3/16"	(M270-50HT2) (H2-3)		
6	J		1	b21	PL 1/2 x 22 3/4	1' 0 7/16"	(M270-50HT2) (H2-3)BENT		
6	J		1	c21	PL 1/2 x 22 3/4	1' 0 7/16"	(M270-50HT2) (H2-3)BENT		
		21D2	1		ABUT DIAPH				723
7	M		1	d21	H 27x84	7' 7 13/16"	(M270-50HT2) (H2-3)		
6	J		1	f21	PL 1/2 x 22 3/4	1' 0 7/16"	(M270-50HT2) (H2-3)BENT		
6	J		1	g21	PL 1/2 x 22 3/4	1' 0 7/16"	(M270-50HT2) (H2-3)BENT		
		21D3	1		ABUT DIAPH				719
7	N		1	h21	H 27x84	7' 7 5/16"	(M270-50HT2) (H2-3)		
6	J		1	k21	PL 1/2 x 22 3/4	1' 0 7/16"	(M270-50HT2) (H2-3)BENT		
6	J		1	m21	PL 1/2 x 22 3/4	1' 0 7/16"	(M270-50HT2) (H2-3)BENT		
		21D4	1		ABUT DIAPH				717
7	N		1	n21	H 27x84	7' 6 15/16"	(M270-50HT2) (H2-3)		
6	J		1	p21	PL 1/2 x 22 3/4	1' 0 7/16"	(M270-50HT2) (H2-3)BENT		
6	J		1	s21	PL 1/2 x 22 3/4	1' 0 7/16"	(M270-50HT2) (H2-3)BENT		
		21D5	1		ABUT DIAPH				714
7	P		1	t21	H 27x84	7' 6 1/16"	(M270-50HT2) (H2-3)		
6	J		1	v21	PL 1/2 x 22 3/4	1' 0 7/16"	(M270-50HT2) (H2-3)BENT		
6	J		1	w21	PL 1/2 x 22 3/4	1' 0 7/16"	(M270-50HT2) (H2-3)BENT		



ABUTMENT DIAPHRAGMS
(ALL PAINTED) (ABUT 2)

MARK	REQ'D	DROP	WP/WP	(A)	(B)	(C)	BEV1	BEV2	1	2	3
21D1	1	4 7/16	7'-0 15/16	7'-6 15/16	7'-8 3/16	1 1/4	9 11/16	9 9/16	a21	b21	c21
21D2	1	4 9/16	7'-8 1/2	7'-6 1/2	7'-7 13/16	5 1/16	9 9/16	9 7/16	d21	f21	g21
21D3	1	4 5/8	7'-8	7'-6	7'-7 5/16	5 1/16	9 3/8	9 5/16	h21	k21	m21
21D4	1	4 5/8	7'-7 9/16	7'-5 9/16	7'-6 15/16	3 3/8	9 1/4	9 3/16	n21	p21	s21
21D5	1	4 11/16	7'-7 1/8	7'-5 1/8	7'-6 1/2	3 3/8	9 3/16	9 1/16	t21	v21	w21

RECEIVED
 OK'D BY *DDV* OK'D BY _____
 SEP 16 2002
 RESUBMIT APPROVED *[Signature]*
 BY *RKW* DATE 09-3-02

FOR GENERAL NOTES SEE GNI.

OUT FOR APPROVAL	9-13-02										
OUT FOR APPROVAL											
ISSUED TO SHOP											
FIELD & OFFICE											
REV.	REMARKS	DATE	DNM	CHK	APP	Q.A.	NO.	DIA.	LGT	TYPE	WASHER
	MATERIAL:	ELECTRODES:									SHOP BOLTS:
											15 16 Ø
SURFACE PREP. & PAINT:											
DESCRIPTION: ABUTMENT DIAPHRAGMS										DRAWN BY	DATE
JOB: VT. ROUTE 9 OVER DEERFIELD RIVER										VWJ	08/20
BRIDGE 25B										CHKD BY	
SEARSBURG, VERMONT										DO	09/04
CONTRACTOR: J.A. McDONALD										APPROV BY	
TENSOR 2243										SUPERVISOR	H. J. GATTI
PROJ NO. NHF-010-1(18)										Q.A.	
CUSTOMER: VERMONT AGENCY OF TRANSPORTATION											
CASCO BAY STEEL STRUCTURES, INC.										JOB NO.	DRG. NO.
75 SPRING HILL ROAD										167	21
PHONE (207) 282-7360										SACO, MAINE 04072	REV. <i>[Signature]</i>
FAX (207) 282-1179											

406-RP25B-SS21