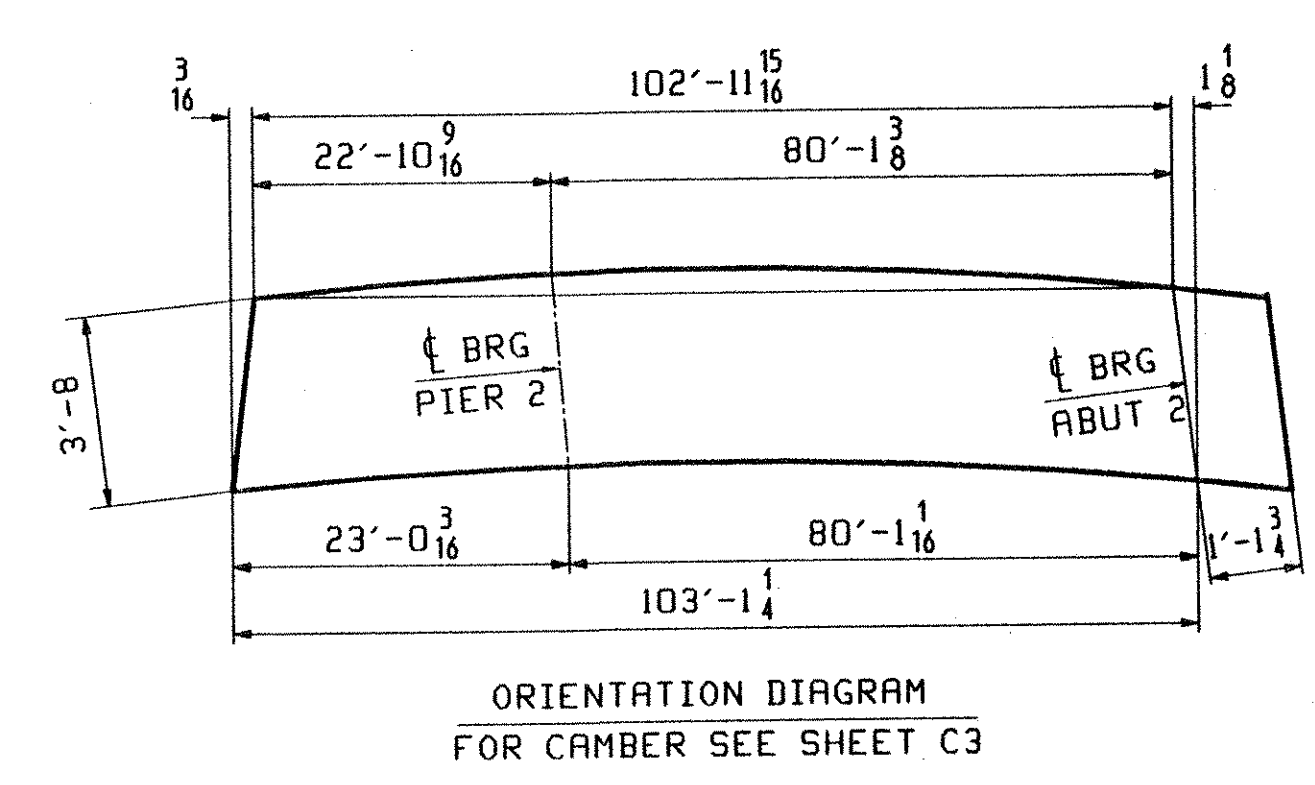
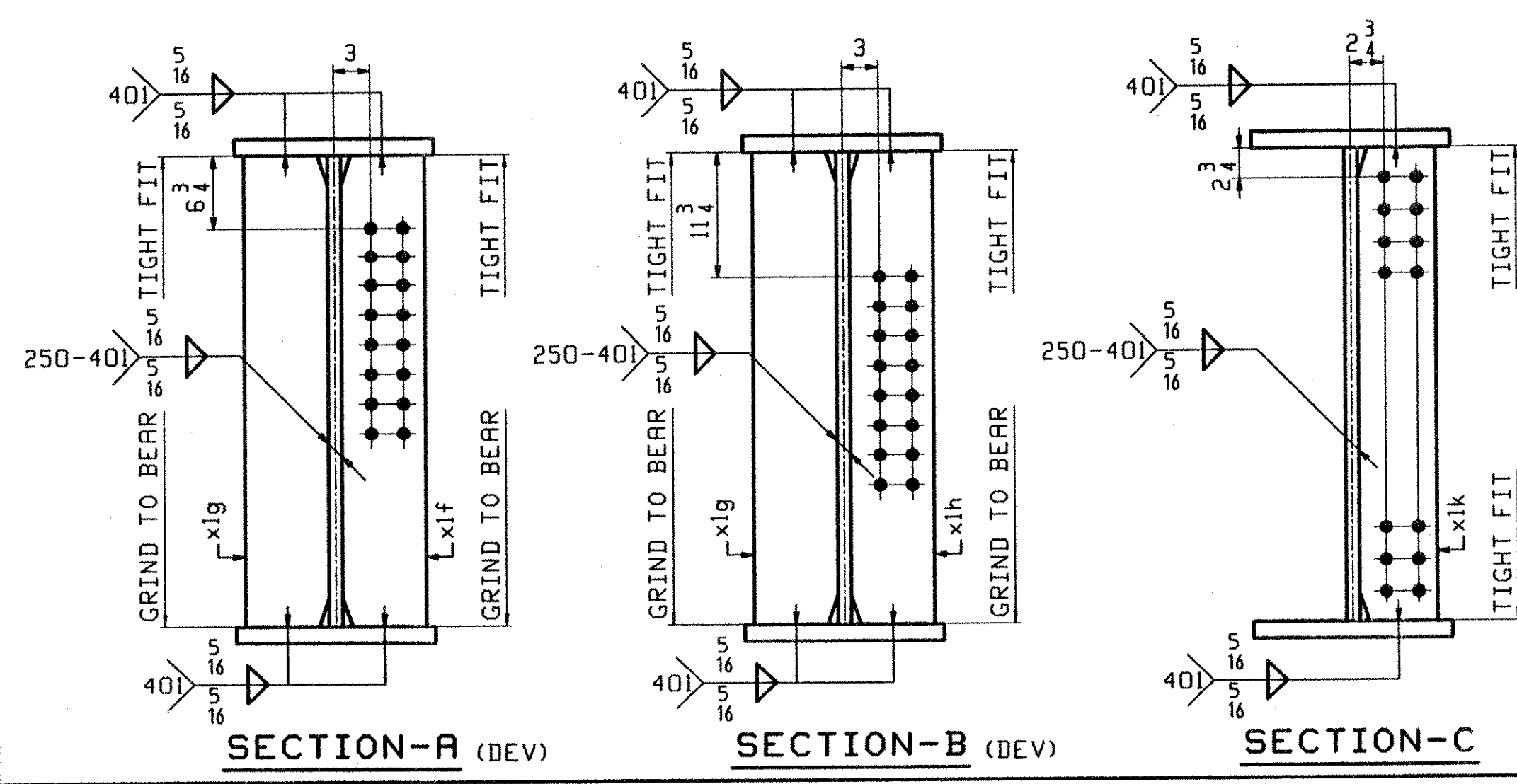
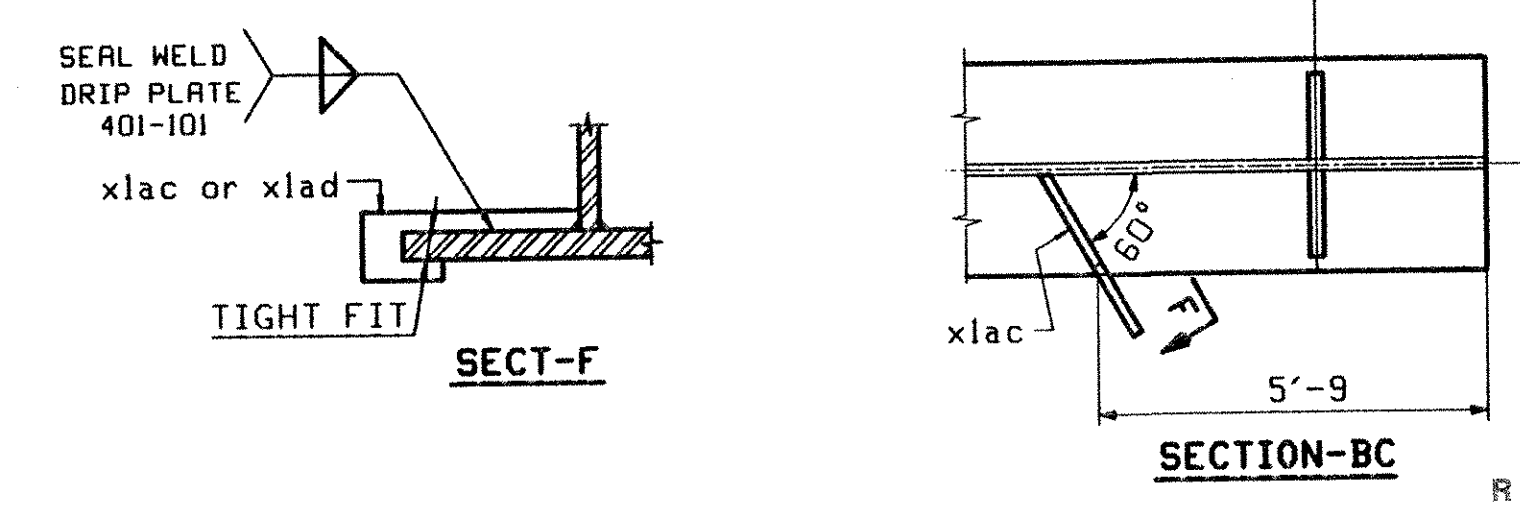


ONE - GIRDER - G6C (DEV)

1. FOR GIRDER STANDARD DETAILS SEE DWG. X1.
2. FOR CAMBER DIAGRAM SEE DWG. C3.
3. FOR FLANGE DIAGRAM SEE DWG. F3.
4. FOR GENERAL NOTES SEE SHT. GNI.



ABM INFO		SHIP		BILL OF MATERIAL				JOB NO.		DRAWING NO.		REV.
PAGE	LINE	MARK	QTY	MARK	MATERIAL	LENGTH		REMARKS	WT	PROCUREMENT NOTES		
						FT	INCHES					
					GIRDER					20729		
3	Y		1	wa	PL 1/2 x 45	55	1 1/4	(M270-50HT2) (H2-3)				
3	Q		1	wb	PL 1/2 x 45	49	1 1/4	(M270-50HT2) (H2-3)				
1	A		1	ta	PL 1/2 x 16	34	0 8	(M270-50HT2) (H2-3)				
2	L		1	tb	PL 7/8 x 16	70	1 1/8	(M270-50HT2) (H2-3)				
1	A		1	ba	PL 1/2 x 16	34	0 8	(M270-50HT2) (H2-3)				
2	L		1	bb	PL 7/8 x 16	70	2 8	(M270-50HT2) (H2-3)				
5	C		5	xik	PL 1/2 x 7	3	8	(M270-50HT2) (H2-3)				
5	B		2	xig	PL 3/4 x 7 1/2	3	8	(M270-50HT2) (H2-3)				
5	B		1	xih	PL 3/4 x 7 1/2	3	8	(M270-50HT2) (H2-3)				
5	B		1	xif	PL 3/4 x 7 1/2	3	8	(M270-50HT2) (H2-3)				
5	K		1	xlac	PL 1/4 x 3 1/2	0	11					
5	K		1	xlad	PL 1/4 x 2 8	0	11					

OUT FOR APPROVAL	9/13/02											
OUT FOR APPROVAL												
ISSUED TO SHOP												
FIELD & OFFICE												
REV.	REMARKS	DATE	DWN	CHK	APP	O.A.	NO.	DIA.	LGT	TYPE	WASHER	
	MATERIAL:											
	M270-50W											
	ELECTRODES:											
	HOLES:											
	15" ø											
	SHOP BOLTS:											
SURFACE PREP. & PAINT: -STEEL WITHIN 10'-0 ENDS OF GIRDERS SHALL BE PAINTED (SEE GNI) -ALL OTHER STEEL SHALL BE BLAST CLEANED AND LEFT UNPAINTED.												
DESCRIPTION: GIRDER - G6C										DRAWN BY		DATE
JOB: VT. ROUTE 9 OVER DEERFIELD RIVER										ATD		09/02
BRIDGE 25B										CHKD BY		
SEARSBURG, VERMONT										DO		09/05
CONTRACTOR: J.A. McDONALD										APPROV BY		
PROJ NO. NHF-010-1(K18)										SUPERVISOR		H. J. GHTTI
CUSTOMER: VERMONT AGENCY OF TRANSPORTATION										O.A.		
CASCO BAY STEEL STRUCTURES, INC.										JOB NO.		DRG. NO.
75 SPRING HILL ROAD										167		18
PHONE (207) 282-7360										SACO, MAINE 04072		
										FAX. (207) 282-1179		
										REV.		△

No. 54 9 086223 EST 2002 / sht/gni/25B-SS18 1 Rev 0

203-PR 25B-SS18